

Ready to start planning your care? Call us at [646-926-0945](tel:646-926-0945) to make an appointment.

×



Memorial Sloan Kettering  
Cancer Center

[Make an Appointment](#)

[← Back](#)

[About Memorial Sloan Kettering](#)

[About Cancer & Treatment](#)

What can we help you find today?

ABOUT US

[Our mission, vision & core values](#)

[Leadership](#)

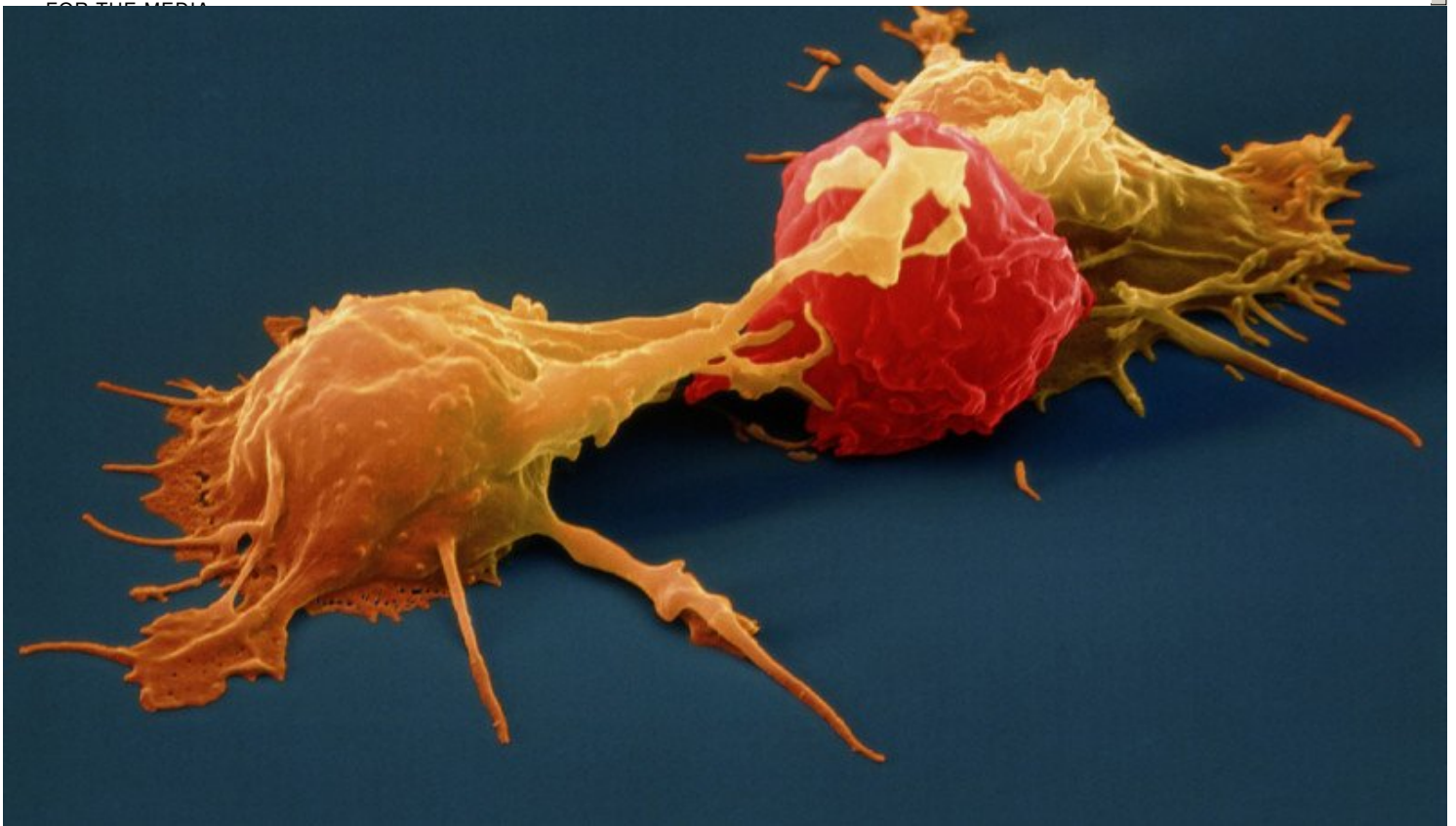
[History](#)

[Inclusion & belonging](#)

[Annual report](#)

[Give to MSK](#)

FOR THE MEDIA



This scanning electron microscopy image shows two natural killer cells (yellow) attacking a cancer cell (red).

## Summary

In the future, more-advanced genetic testing might offer better ways to match up patients who need a bone marrow transplant with potential donors.

A recent study by Memorial Sloan Kettering researchers is a step in the direction of improving strategies to find matching donors for [leukemia](#) patients

Study Suggests Refined Donor Selection Could Improve Outcomes of Bone Marrow Transplantation in Leukemia

who need a [bone marrow transplant](#) . Published in the [August 30 issue of the \*New England Journal of Medicine\*](#) , the findings indicate that some people are less likely to redevelop their disease after a transplant if their donor carries certain genetic traits.

[Allogeneic bone marrow transplantation \(BMT\)](#) is a complex but often lifesaving treatment for a number of cancers and blood disorders, including [acute myelogenous leukemia \(AML\)](#) . The procedure involves eliminating a patient's diseased bone marrow using chemotherapy or radiation and renewing it with healthy, blood-forming stem cells from a donor or from donated umbilical cord blood.

The success of BMT depends in part on finding a donor who is a “good match” — someone who has certain genetic features in common with the patient. When matching patients with potential donors, doctors currently examine the DNA sequence of a group of genes called *HLA*, which varies among individuals. If a donor's *HLA* genes closely resemble those of the patient, this reduces the risk of post-treatment complications such as graft-versus-host-disease, in which the transplanted cells recognize the patient's own cells and tissues as foreign, and attack them.

The new study now suggests that an additional type of gene known as *KIR* might influence the long-term effectiveness of transplants in patients with AML.

“We found that specific combinations of donor *KIR* and patient *HLA* genes are linked to improved transplant outcomes, with patients living disease-free longer,” says medical oncologist [Katharine C. Hsu](#) . She led the research together with Bo Dupont, a member emeritus of the [Immunology Program](#) in the [Sloan Kettering Institute](#) .

“This knowledge could make it possible to refine the selection of donors for some patients, for whom more than one *HLA*-matched donor is available, by testing for *KIR* genes as well as for *HLA*,” adds Dr. Hsu.

## Harnessing Natural Killer Cells

She explains that the reason why certain combinations of donor *HLA* and *KIR* appear to be beneficial in a transplant setting has to do with the function of immune system cells called natural killer (NK) cells, which have the ability to recognize and kill tumor cells.

“After a patient receives a bone marrow transplant from a donor, NK cells and other immune cells form naturally from the donor's stem cells,” Dr. Hsu says. In some patients, such NK cells help prevent leukemia from coming back by reacting against newly developing cancer cells and eliminating them.

The *KIR* genes make proteins called killer cell Ig-like receptors, which are found on the surface of NK cells. As with *HLA*, the *KIR* genes vary between people. Some individuals carry a gene called *KIR2DS1*, which produces a receptor that has been shown to activate the cancer-fighting function of NK cells under certain conditions.

“We posited that transplants from donors who have this favorable gene might provide better protection from relapse because NK cells in the transplant have an enhanced capacity to react against leukemia cells and kill them,” explains Dr. Dupont.

[Back to top](#) ^

## Making Good Matches Better

To test this hypothesis, the investigators performed a retrospective study of 1,277 cases in which AML patients had received a bone marrow transplant from an *HLA*-matched donor.

The researchers used banked blood samples to perform DNA testing of each donor's *KIR* genes. They discovered that among patients who had received transplants from donors carrying *KIR2DS1*, the disease returned less often after the treatment than in patients whose donor did not carry the gene.

The beneficial effect of *KIR2DS1* was observed only in patients who carried specific variants of the gene *HLA-C*. The researchers note that more than 81 percent of the patients in the study have such gene variants, while approximately one-third of donors have *KIR2DS1*.

Dr. Hsu and her colleagues are now planning a clinical trial to explore whether their findings might translate into more-advanced genetic tests to match up patients and donors for BMT.

In addition, she is hoping that basic research will reveal other gene combinations that may result in more favorable transplant outcomes for patients.

"HLA testing is currently the gold standard, but we may one day be testing for additional genes," she notes. "As we learn more about how NK cells function in health and in disease we will increasingly get better at finding the best possible match for each patient, improving the chance of a cure."

[Back to top](#) ^

This research was supported by the National Institutes of Health under award numbers AI69197, UL1RR024996, HL088134, and CA23766.

© 2026 Memorial Sloan Kettering Cancer Center