

Ready to start planning your care? Call us at [646-926-0945](tel:646-926-0945) to make an appointment.

×



Memorial Sloan Kettering
Cancer Center

[Make an Appointment](#)

[Back](#)

[About Memorial Sloan Kettering Cancer Center & Treatment](#)

[About Cancer & Treatment](#)

What can we help you find today?

ABOUT US

[Our mission, vision & core values](#)

[Leadership](#)

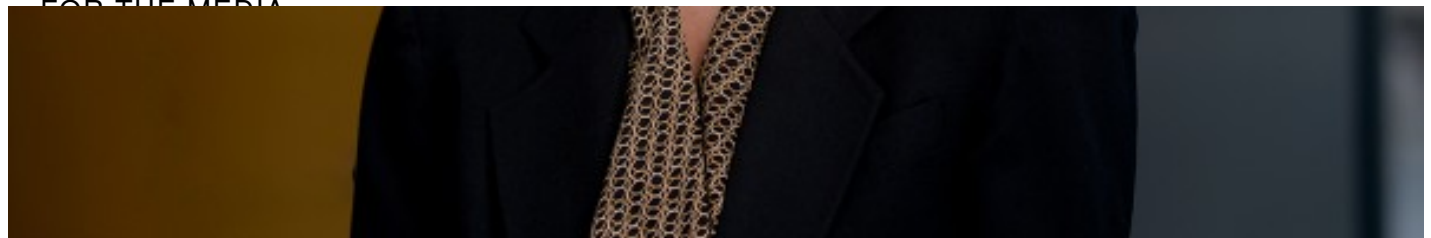
[History](#)

[Inclusion & belonging](#)

[Annual report](#)

[Give to MSK](#)

FOR THE MEDIA



S. Machele Donat, MD, FACS

[Urologic Surgeon \(#about-me\)](#)



Areas of Expertise

Conditions I Treat

- Bladder cancer
- Kidney (renal cell) cancer and conditions
- Urethral and penile cancers and conditions

My Specialties

- Urinary diversion
- Urinary reconstruction
- Nerve-sparing surgery

[View more expertise \(#about_specialties\)](#)



[Dr. Donat's Office Information \(#contact-and-location\)](#)



Languages: English

Request an Appointment

Our Care Advisors can answer many of your questions. They will connect you with the best healthcare provider for your needs.

[Call 646-497-9068](#)

[Make an appointment](#)

Get to Know Me

I am a board-certified urologic surgeon with expertise in treating patients with cancers of the urinary tract, including bladder, urethral, kidney, testis, prostate cancer, and rare cancers such as urethral cancer or genitourinary sarcomas.

This provider is part of a team that was ranked [#1 in the nation for Urology Cancer Care](#) this year by *U.S. News & World Report*.

Read more +

What I Do at MSK

I'm a urologic surgeon, which is a doctor with special training in surgery on the genitourinary (jeh-nih-toh-YOOR-ih-nayr-ee) (GU) system. This includes the bladder, kidney, penis, prostate, and testicles.

- Attending Surgeon

Areas of Expertise

Conditions I Treat

- Bladder cancer
- Kidney (renal cell) cancer and conditions
- Urethral and penile cancers and conditions
- Testicular cancer
- Prostate cancer and conditions
- Genitourinary cancers and conditions

My Specialties

- Urinary diversion
- Urinary reconstruction
- Nerve-sparing surgery

Education & Honors

Education

- MD, University of Oklahoma Health Science Center

Residencies

- University of Oklahoma Health Science Center

Fellowships

- Memorial Sloan Kettering Cancer Center

Board Certifications

- Urology

Insurance Information

Understanding your insurance options is an important part of managing your cancer care. We have relationships with many common healthcare providers and plans.

Don't see your carrier or plan? [We can help you understand your coverage](#) .

If you don't have health insurance or are worried that your care may not be fully covered, our [financial assistance](#) programs may be able to help.

If you have questions about insurance, call us at [646-497-9176](tel:646-497-9176) .

Make an Appointment

New Patients

Scheduling an appointment is easy. Click or call [646-497-9068](tel:646-497-9068) — we're available 24 hours a day, 7 days a week


[Make an Appointment](#)

Current Patients

Request an appointment by calling your Care Team or messaging them in [MSK MyChart](#).

Contact and Location


Office Phone

 [646-422-4398](tel:646-422-4398)

Location

 New York, NY

[David H. Koch Center for Cancer Care at Memorial Sloan Kettering Cancer Center](#)

 530 East 74th Street
New York, NY 10021

[Get Directions](#)

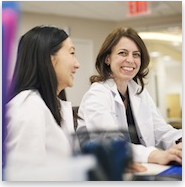
Looking to see a doctor at a different location? [See all MSK locations](#) .

Colleagues

Doctors at Memorial Sloan Kettering work as teams, with specialists from all different areas. This allows us to consider all your needs together, and to give you the best possible care.

[See all Urology Service doctors \(https://www.mskcc.org/doctor?field_vocab_departments%5B881%5D=881\)](https://www.mskcc.org/doctor?field_vocab_departments%5B881%5D=881)

Clinical Trials



Find a Clinical Trial for You

Memorial Sloan Kettering's doctors and scientists are constantly developing new treatments for cancer. MSK is typically running hundreds of clinical trials at a given time.

You may be able to participate in a clinical trial even if you are new to MSK. Search our online directory to find trial information and see more about who can participate.

[Search clinical trials \(https://www.mskcc.org/cancer-care/clinical-trials\)](https://www.mskcc.org/cancer-care/clinical-trials)

Research and Publications

Publications on PubMed

Visit PubMed for a full listing of Dr. Donat's journal articles. Pubmed is an online index of research papers and other articles from the US National Library of Medicine and the National Institutes of Health.

[See all on PubMed \(http://www.ncbi.nlm.nih.gov/entrez/query.fcgi?cmd=search&db=pubmed&term=Donat%20SM\)](http://www.ncbi.nlm.nih.gov/entrez/query.fcgi?cmd=search&db=pubmed&term=Donat%20SM)

Disclosures

Members of the MSK Community often work with pharmaceutical, device, biotechnology, and life sciences companies, and other organizations outside of MSK, to find safe and effective cancer

treatments, to improve patient care, and to educate the health care community. These activities outside of MSK further our mission, provide productive collaborations, and promote the practical application of scientific discoveries.

MSK requires doctors, faculty members, and leaders to report (“disclose”) the relationships and financial interests they have with external entities. As a commitment to transparency with our community, we make that information available to the public. Not all disclosed interests and relationships present conflicts of interest. MSK reviews all disclosed interests and relationships to assess whether a conflict of interest exists and whether formal COI management is needed.

S. Machele Donat discloses the following relationships and financial interests:

No disclosures meeting criteria for time period

If you’re a patient at MSK and would like more information about your doctor’s external relationships, please talk with your doctor.

The information published here is a complement to other publicly reported data and is for a specific annual disclosure period. There may be differences between information on this and other public sites as a result of different reporting periods and/or the various ways relationships and financial interests are categorized by organizations that publish such data.

This page and data include information for a specific MSK annual disclosure period (January 1, 2024 through disclosure submission in spring 2025). This data reflects interests that may or may not still exist. This data is updated annually.

Learn more about MSK’s COI policies [here](#) . For questions regarding MSK’s COI-related policies and procedures, email MSK’s Compliance Office at ecoi@mskcc.org .

[View all disclosures \(https://www.mskcc.org/disclosures\)](https://www.mskcc.org/disclosures)

© 2026 Memorial Sloan Kettering Cancer Center