

Ready to start planning your care? Call us at [800-525-2225](tel:800-525-2225) to make an appointment.

×



Memorial Sloan Kettering
Cancer Center

[Make an Appointment](#)

[Back](#)

[For Research Scientists](#)
[Learn About Cancer & Treatment](#)

ABOUT US

[Our mission, vision & core values](#)

[Leadership](#)

[History](#)

[Inclusion & belonging](#)

[Annual report](#)

[Give to MSK](#)

FOR THE MEDIA

Research Topics:

- Artificial Intelligence
- Cancer Genetics & Genomics
- CAR T
- CAR T Cells
- Gene Editing
- Immune Effector Cells

Search



[Explore our research topics.](#)



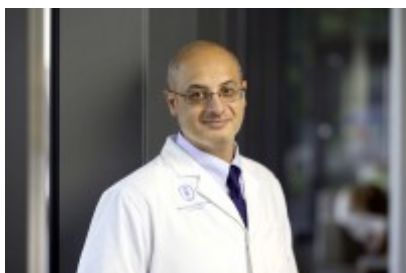
[Learn about our recent discoveries.](#)



[Meet our researchers.](#)

182 Faculty Members found

MOLECULAR PHARMACOLOGY PROGRAM



[Omar Abdel-Wahab, MD](#)

Physician-scientist Omar Abdel-Wahab studies the functional genomics of hematopoietic malignancies.

[View Publications](#)

[✉ abdelwao@mskcc.org](mailto:abdelwao@mskcc.org)

MEMORIAL HOSPITAL RESEARCH LABORATORIES



[Prasad S. Adusumilli, MD](#)

Physician-scientist Prasad S. Adusumilli studies tumor immunology and the development of T-cell-mediated immunotherapy for thoracic malignancies and pleural-based diseases.

[View Publications](#)

CELL BIOLOGY PROGRAM



[Maria Akhmanova, PhD](#)

The Akhmanova laboratory studies cell invasion and migration through tissues, and how it is controlled by surrounding tissue cells.

[View Publications](#)

[✉ akhmanm1@mskcc.org](mailto:akhmanm1@mskcc.org)

CHEMICAL BIOLOGY PROGRAM



[Heeseon An, PhD](#)

Heeseon An's lab studies protein degradation in health and disease using chemical, biological, and proteomics tools.

[View Publications](#)

AnH@mskcc.org

MEMORIAL HOSPITAL RESEARCH LABORATORIES



[Cristina R. Antonescu, MD](#)

The Antonescu lab focuses on translocation-associated sarcoma pathogenesis and generating in vitro models.

[View Publications](#)

antonesc@mskcc.org

MOLECULAR BIOLOGY PROGRAM



[Naama Aviram, PhD](#)

The Aviram Lab investigates the molecular mechanisms that protect microorganisms from their own pathogenic invaders.

[View Publications](#)

[✉ aviramn@mskcc.org](mailto:aviramn@mskcc.org)

CHEMICAL BIOLOGY PROGRAM



[Daniel Bachovchin, PhD](#)

Chemical biologist Daniel Bachovchin designs selective inhibitors to study enzymes and pathways in cancer and immune system signaling.

[View Publications](#)

[✉ bachovcd@mskcc.org](mailto:bachovcd@mskcc.org)

IMMUNO-ONCOLOGY PROGRAM

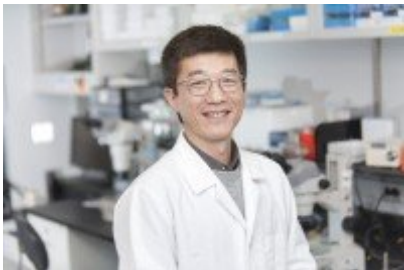


[Vinod Balachandran, MD](#)

Surgeon scientist Vinod Balachandran develops novel immunotherapies for pancreatic cancer.

[View Publications](#)

DEVELOPMENTAL BIOLOGY PROGRAM



[Zhirong Bao, PhD](#)

The Bao laboratory investigates how the genome dictates development using *C. elegans* as a model.

[View Publications](#)

[✉ baoz@mskcc.org](mailto:baoz@mskcc.org)

DEVELOPMENTAL BIOLOGY PROGRAM



[Mary Baylies, PhD](#)

The Baylies laboratory studies the mechanisms that form and maintain muscle both during normal development and in disease.

[✦ View Publications](#)

[✉ m-baylies@ski.mskcc.org](mailto:m-baylies@ski.mskcc.org)

[Load More](#)

© 2025 Memorial Sloan Kettering Cancer Center