

Ready to start planning your care? Call us at [800-525-2225](tel:800-525-2225) to make an appointment.

×



Memorial Sloan Kettering
Cancer Center

[Make an Appointment](#)

[Back](#)

[Patient & Family Center & Treatment](#)

[Refer a Patient](#)

ABOUT US

[Our mission, vision & core values](#)

[Leadership](#)

[History](#)

[Equality, diversity & inclusion](#)

[Annual report](#)

[Give to MSK](#)



Integrated Genomics Operation (IGO)

[Core Facilities & Resources](#)

Overview



Neeman Mohibullah
Director

The Integrated Genomics Operation (IGO) core enables basic, clinical, and translational science by providing a broad range of services and expertise to investigators interested in evaluating gene expression, chromosome structure, and nucleotide sequence. Our services are comprehensive, rapid, and user-friendly. Through the centralized management of all sequencing activities at MSK, the core empowers scientists with an array of technological options and the most efficient and cost-effective means of performing high-throughput genomics.

IGO offers a comprehensive inventory of genomic platforms. We house a full range of Illumina NGS instruments, maximizing our flexibility for many sequencing applications. We comprise seven main groups, under the leadership of Dr. Neeman Mohibullah. We

are located on the 3rd floor of the Zuckerman Building.

[View More](#) →

People



Neeman
Mohibullah
Director

Members



Mohamed
Abdelbaset
Senior Research
Technician, EXPAND



Magdalena Alioto
Grace
Research Technician,
Library Prep



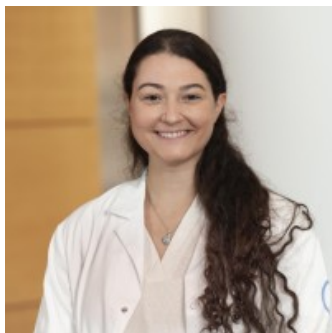
Katherine Allard
Senior Research
Assistant, Library Prep



Kiruthika
Balasubramanian
Research Assistant,
Library Prep



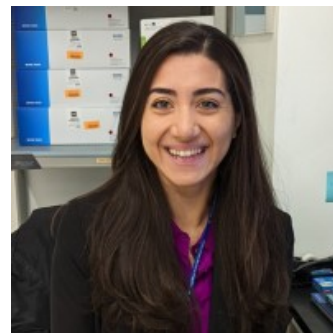
Robin Blaise
Supervisor, Sample &



Kalliopi Chatzis
Research Assistant,



Jim Chen
Senior Research



Stephanie
Chrysanthou

Project Management



Cassidy
Cobbs
Scientific Liaison

Library Prep



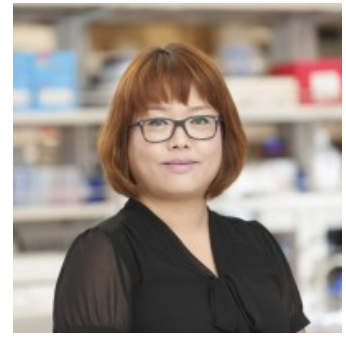
Andrea
Farina
Manager, EXPAND

Technician, Sequencing



Dorothy Guzowski
Senior Research
Assistant, EXPAND

Manager, R&D



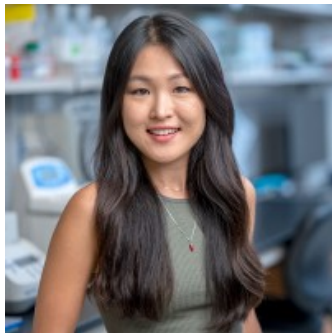
Keumsil Hwang
Senior Research
Assistant, Sequencing



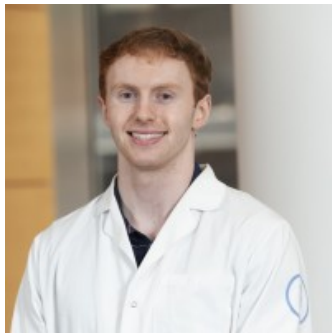
Andrea John
Billing/Procurement
Associate



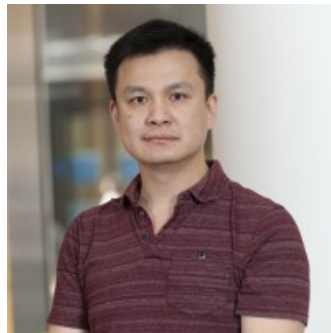
Trishala
Karmacharya
Research Assistant



DooA Kim
Research Assistant, Single
Cell



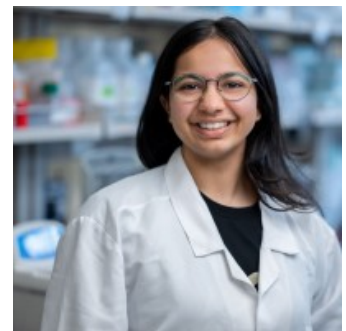
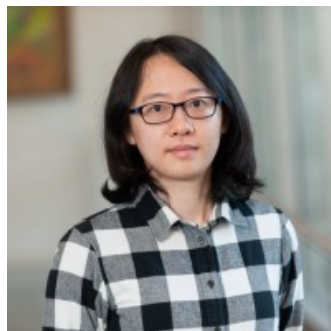
Desmond
Lambe
Research Technician



Alan Li
Senior Automation
Engineer



Juan Li
Scientific Research Lead,
R&D



Cuijie Lu

Bioinformatics Software
Engineer I

Medhini Mankale

Research Technician,
Sequencing



Christian
McCauley

Senior Research
Technician, EXPAND



David McManamon

Manager, Data



Fahimeh Mirhaj

Bioinformatics Software
Engineer II



Darrell Nabors

Bioinformatics Engineer V



Tressa Octave

Senior Project Assistant,
Sample & Project
Management



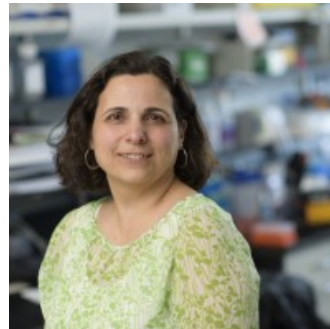
Iris Parke

Research Technician,
Single Cell



Ruchi
Patel

Manager, Single Cell &
Library Prep



Angela Pepe-
Caprio

Operations Manager



Elevit Perez

Automation Engineer



Satish
Ramakrishnan
Senior Research
Assistant, Single Cell



Sophia
Rust
Research Technician,
Library Prep



Allison Sexton
Project Assistant, Sample
& Project Management



Ravi
Shrivastav
Senior Research
Technician, Single Cell



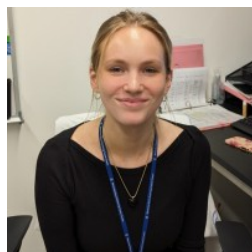
Matthew Solowsky
Senior Research
Technician, EXPAND



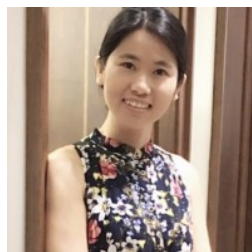
Jinghui Song
Supervisor, Spatial
Transcriptomics



Liping Sun



Qingyun Tian
Research Assistant



Shauna
Tuso

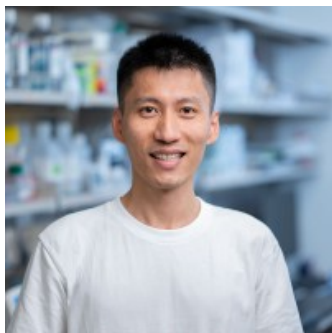


Manager, Sequencing

Admin Assistant II

Rachel
Tessier
Project Manager

Yushi
Wu
Research Assistant, Single
Cell



Mingqiang Zhuang
Research Assistant,
Sequencing

Get in Touch

✉ mohibuln@mskcc.org
Director Email

✉ genomics@mskcc.org
Director Email

▼ Connect

[Contact us](#)

[Locations](#)

APPOINTMENTS

[800-525-2225](tel:800-525-2225)



▼ About MSK

[About us](#)

[Careers](#) ■

[Giving](#) ■

▼ Cancer Care

[Adult cancer types](#)

[Child & teen cancer types](#)

[Integrative medicine](#)

[Nutrition & cancer](#)

[Find a doctor](#)

▼ Research & Education

[Sloan Kettering Institute](#)

[Gerstner Sloan Kettering Graduate School](#) 

[Graduate medical education](#)

[MSK Library](#) 

[Communication preferences](#)

[Cookie preferences](#)

[Legal disclaimer](#)

[Accessibility statement](#)

[Privacy policy](#)

[Price transparency](#)

[Public notices](#)

© 2024 Memorial Sloan Kettering Cancer Center