

Ready to start planning your care? Call us at [800-525-2225](tel:800-525-2225) to make an appointment.

×



Memorial Sloan Kettering
Cancer Center

[Make an Appointment](#)

[Back](#)

HUMAN ONCOLOGY & PATHOGENESIS PROGRAM

[Read About Our Cancer Treatment](#)

[Learn About Cancer & Treatment](#)

The Charles Sawyers Lab

ABOUT US

[Our mission, vision & core values](#)

[Leadership](#)

[History](#)

[Inclusion & belonging](#)

[Annual report](#)

[Give to MSK](#)

FOR THE MEDIA



Charles L. Sawyers, MD

Investigator, Howard Hughes Medical Institute; Marie-Josée and Henry R. Kravis Chair in Human Oncology and Pathogenesis; Chair, Human Oncology and Pathogenesis Program

Dr. Sawyers is an HHMI Investigator searching for molecularly targeted approaches to treat cancer. He has identified cell signaling components critical to the growth of cancer cells in chronic myeloid leukemia, prostate and other cancers, resulting in the development of multiple FDA-approved inhibitors in clinical use today.

[View Lab Overview](https://www.mskcc.org/research-areas/labs/charles-sawyers/overview) (<https://www.mskcc.org/research-areas/labs/charles-sawyers/overview>)



Featured News



[Charles L. Sawyers, MD, of Memorial Sloan Kettering Cancer Center Elected to the National Academy of Medicine Council](#)

Charles L. Sawyers, MD, Investigator, Howard Hughes Medical Institute (HHMI); Marie-Josée and Henry R. Kravis Chair in Human Oncology and Pathogenesis; Chair, Human Oncology and Pathogenesis Program at Memorial Sloan Kettering Cancer Center (MSK), has been elected to the National Academy of Medicine (NAM) Council, the Academy's governing and oversight body, for a three-year term.

[Lineage plasticity in prostate cancer depends on JAK/STAT inflammatory signaling](#)

Resistance to molecularly targeted therapies is often due to mutations in the drug target, but there is growing recognition of other modes of tumor esc...



[A New Approach in Prostate Cancer: Targeting the Cells Surrounding the Tumor](#)

Scientists have found a protein that empowers prostate tumors to resist hormone therapy.

[View All Featured News](#)

Publications Highlights

[The neuroendocrine transition in prostate cancer is dynamic and dependent on ASCL1.](#)

Romero R, Chu T, González-Robles TJ, Smith P, Xie Y, Kaur H, Yoder S, Zhao H, Mao C, Kang W, Pulina MV, Lawrence KE, Gopalan A, Zaidi S, Yoo K, Choi J, Fan N, Gerstner O, Karthaus WR, DeStanchina E, Ruggles KV, Westcott PMK, Chaligné R, Pe'er D, Sawyers CL. bioRxiv [Preprint]. 2024 Apr 11:2024.04.09.588557. doi: 10.1101/2024.04.09.588557. PMID: 38645223 Free PMC article. Preprint.

[Lineage plasticity in prostate cancer depends on JAK/STAT inflammatory signaling](#)

. Chan JM, Zaidi S, Love JR, Zhao JL, Setty M, Wadosky KM, Gopalan A, Choo ZN, Persad S, Choi J, LaClair J, Lawrence KE, Chaudhary O, Xu T, Masilionis I, Linkov I, Wang S, Lee C, Barlas A, Morris MJ, Mazutis L, Chaligne R, Chen Y, Goodrich DW, Karthaus WR, Pe'er D, Sawyers CL. Science. 2022 Sep 9;377(6611):1180-1191. doi: 10.1126/science.abn0478. Epub 2022 Aug 18. PMID: 35981096 Free PMC article.

[Tumor Microenvironment-Derived NRG1 Promotes Antiandrogen Resistance in Prostate](#)

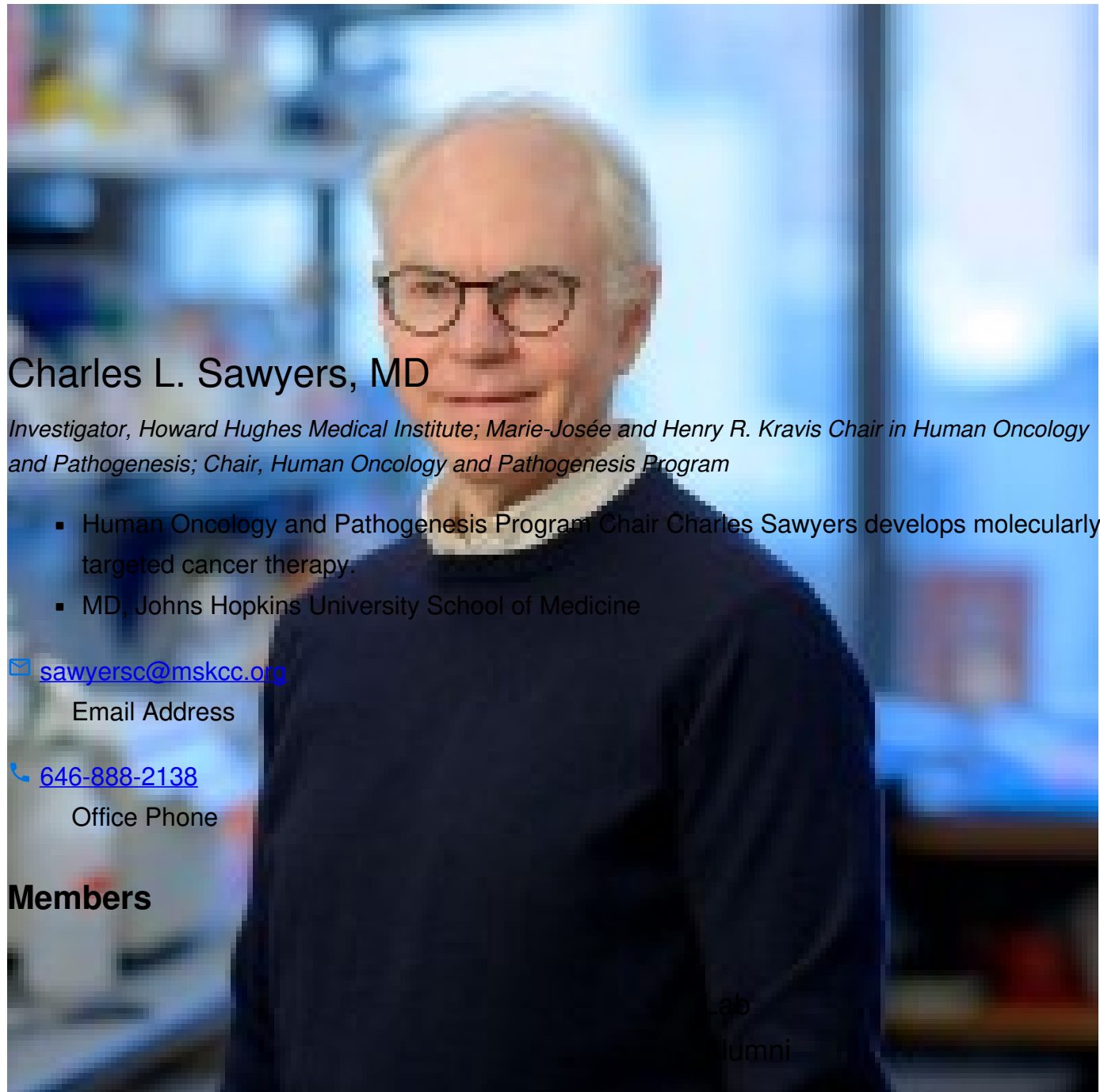
[Cancer.](#) Zhang Z, Karthaus WR, Lee YS, Gao VR, Wu C, Russo JW, Liu M, Mota JM, Abida W, Linton E, Lee E, Barnes SD, Chen HA, Mao N, Wongvipat J, Choi D, Chen X, Zhao H, Manova-Todorova K, de Stanchina E, Taplin ME, Balk SP, Rathkopf DE, Gopalan A, Carver BS, Mu P, Jiang X, Watson PA, Sawyers CL. *Cancer Cell*. 2020 Aug 10;38(2):279-296.e9. doi: 10.1016/j.ccell.2020.06.005. Epub 2020 Jul 16. PMID: 32679108 Free PMC article.

[Regenerative potential of prostate luminal cells revealed by single-cell analysis.](#) Karthaus WR, Hofree M, Choi D, Linton EL, Turkecul M, Bejnood A, Carver B, Gopalan A, Abida W, Laudone V, Biton M, Chaudhary O, Xu T, Masilionis I, Manova K, Mazutis L, Pe'er D, Regev A, Sawyers CL. *Science*. 2020 May 1;368(6490):497-505. doi: 10.1126/science.aay0267. PMID: 32355025 Free PMC article.

[FOXA1 mutations alter pioneering activity, differentiation and prostate cancer phenotypes.](#) Adams EJ, Karthaus WR, Hoover E, Liu D, Gruet A, Zhang Z, Cho H, DiLoreto R, Chhangawala S, Liu Y, Watson PA, Davicioni E, Sboner A, Barbieri CE, Bose R, Leslie CS, Sawyers CL. *Nature*. 2019 Jul;571(7765):408-412. doi: 10.1038/s41586-019-1318-9. Epub 2019 Jun 26. PMID: 31243370 Free PMC article.

[View All Publications](#)

People



Charles L. Sawyers, MD

Investigator, Howard Hughes Medical Institute; Marie-Josée and Henry R. Kravis Chair in Human Oncology and Pathogenesis; Chair, Human Oncology and Pathogenesis Program

- Human Oncology and Pathogenesis Program Chair Charles Sawyers develops molecularly targeted cancer therapy.
- MD, Johns Hopkins University School of Medicine

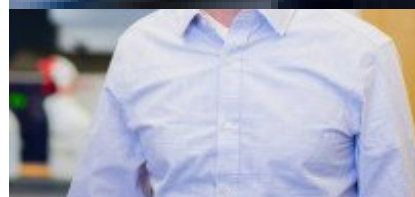
✉ sawyersc@mskcc.org

Email Address

☎ [646-888-2138](tel:646-888-2138)

Office Phone

Members



Wassim Abida
Associate Member

- (2019)
- AACR Princess Takamatsu Memorial Lectureship and Award (2019)



Brett Carver
Associate Attending

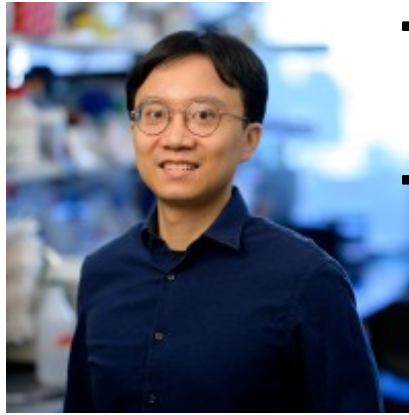
Lab Affiliations

Achievements

- NCI Alfred G. Knudson Award in Cancer Genetics (2020)
- STAT Biomedical Innovation Award



Eric Bent
Fellow



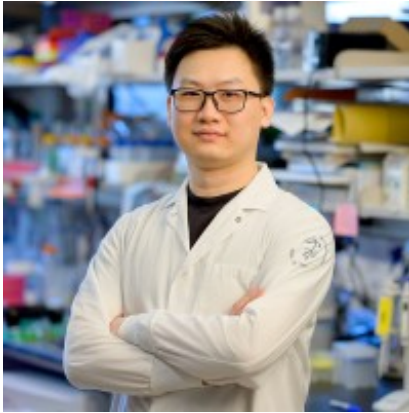
Zhendong Cao
Research Fellow - HHMI

- The Scheele Award, Swedish Academy of Pharmaceutical Sciences (2017)
- American Cancer Society Medal of Honor (2017)

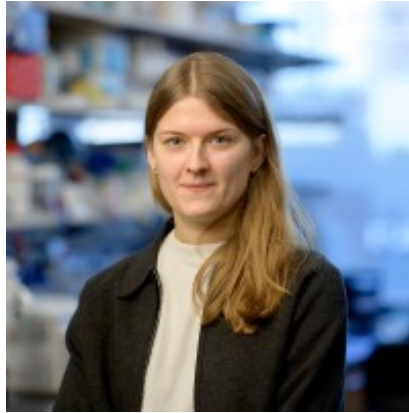
Open Positions

To learn more about available postdoctoral opportunities, please visit our [Career Center](#)

To learn more about compensation and benefits for postdoctoral researchers at MSK, please visit [Resources for Postdocs](#)



Pan Cheng
Research Scholar



Agnieszka Chryplewicz
Research Scholar

Get in Touch

✉ sawyersc@mskcc.org

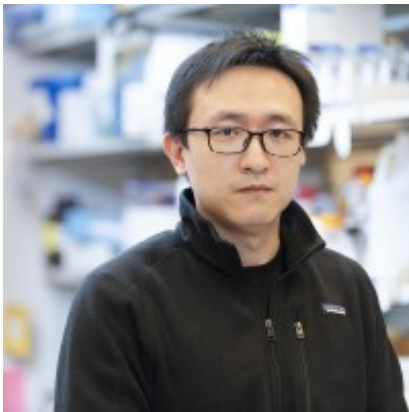
Lab Head Email

☎ [646-888-2138](tel:646-888-2138)

Office Phone

☎ [646-888-3462](tel:646-888-3462)

[@sawyerslabmskcc.bsky.social](#)



Teng Han
Research Associate



Emmet Huang-Hobbs
Research Scholar

Disclosures

Members of the MSK Community often work with pharmaceutical, device, biotechnology, and life sciences companies, and other organizations outside of MSK, to find safe and effective cancer treatments, to improve patient care, and to educate the health care community. These activities outside of MSK further our mission, provide productive collaborations, and promote the practical application of scientific discoveries.

MSK requires doctors, faculty members, and leaders to report (“disclose”) the relationships and financial interests they have with external entities. As a commitment to transparency with our

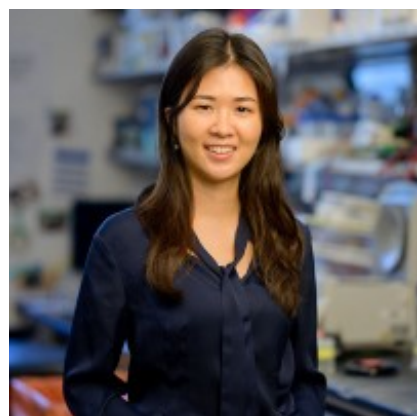
community, we make that information available to the public.



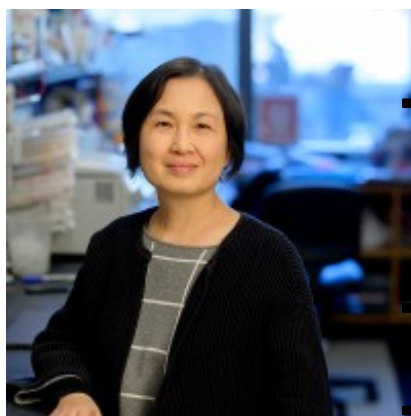
Harmanpreet Kaur
Research Technician



Zahra Khan
Research Technician



Young Sun Lee
MD-PhD Candidate



Ninghui Mao
Laboratory Manager



Kyrie Pappas
Senior Research Scientist



Rodrigo Romero
Research Associate

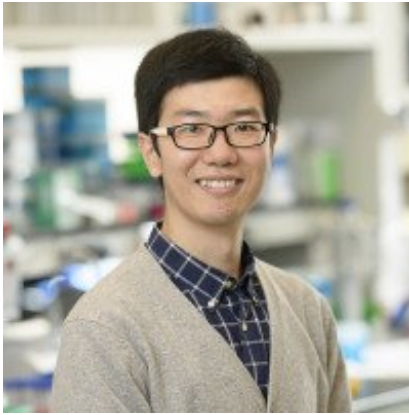
Not all disclosed interests and relationships present conflicts of interest. MSK reviews all disclosed interests and relationships to assess whether a conflict of interest exists and whether formal COI management is needed.

Charles L. Sawyers discloses the following relationships and financial interests:

- Arsenal IO Canada Parent, Inc.
Equity; Professional Services and Activities
- BeiGene, Ltd.
Equity; Professional Services and Activities
- Blueprint Medicines
Professional Services and Activities
- Column Group
Equity; Professional Services and Activities
- Diaprost AB
Intellectual Property Rights
- Foghorn Therapeutics
Equity; Professional Services and Activities
- Housey Pharmaceutical
Equity; Professional Services and Activities
- Nextech Venture, LTD
Equity; Professional Services and Activities
- Novartis
Equity

- Oric Pharmaceuticals
Equity; Intellectual Property Rights; Professional Services and Activities
- PMV Pharma
Equity; Professional Services and Activities

The information published here is a complement to other publicly reported data and is for a specific annual disclosure period. There may be differences between information on this and other public sites as a result of different



Zhen Sun

Research Associate

Office at ecoi@mskcc.org .

reporting periods and/or the various ways relationships and financial interests are categorized by organizations that publish such data.

This page and data include information for a specific MSK annual disclosure period (January 1, 2024 through disclosure submission in spring 2025). This data reflects interests that may or may not still exist. This data is updated annually.

Learn more about MSK's COI policies [here](#) . For questions regarding MSK's COI-related policies and procedures, email MSK's Compliance

[View all disclosures \(https://www.mskcc.org/disclosures\)](https://www.mskcc.org/disclosures)

© 2026 Memorial Sloan Kettering Cancer Center