

Ready to start planning your care? Call us at [646-926-0945](tel:646-926-0945) to make an appointment.

×



Memorial Sloan Kettering  
Cancer Center

[Make an Appointment](#)

[Back](#)

HUMAN ONCOLOGY & PATHOGENESIS PROGRAM

[About Us | Our Cancer Treatment](#)

[Learn About Cancer & Treatment](#)

# The Charles Sawyers Lab

ABOUT US

[Our mission, vision & core values](#)

[Leadership](#)

[History](#)

[Inclusion & belonging](#)

[Annual report](#)

[Give to MSK](#)

FOR THE MEDIA



Charles L. Sawyers, MD

Investigator, Howard Hughes Medical Institute; Marie-Josée and Henry R. Kravis Chair in Human Oncology and Pathogenesis; Chair, Human Oncology and Pathogenesis Program

---

Dr. Sawyers is an HHMI Investigator searching for molecularly targeted approaches to treat cancer. He has identified cell signaling components critical to the growth of cancer cells in chronic myeloid leukemia, prostate and other cancers, resulting in the development of multiple FDA-approved inhibitors in clinical use today.

[View Lab Overview \(https://www.mskcc.org/research-areas/labs/charles-sawyers/overview\)](https://www.mskcc.org/research-areas/labs/charles-sawyers/overview)



## Featured News



### [Charles L. Sawyers, MD, of Memorial Sloan Kettering Cancer Center Elected to the National Academy of Medicine Council](#)

Charles L. Sawyers, MD, Investigator, Howard Hughes Medical Institute (HHMI); Marie-Josée and Henry R. Kravis Chair in Human Oncology and Pathogenesis; Chair, Human Oncology and Pathogenesis Program at Memorial Sloan Kettering Cancer Center (MSK), has been elected to the National Academy of Medicine (NAM) Council, the Academy's governing and oversight body, for a three-year term.

### [Lineage plasticity in prostate cancer depends on JAK/STAT inflammatory signaling](#)

Resistance to molecularly targeted therapies is often due to mutations in the drug target, but there is growing recognition of other modes of tumor esc...



## [A New Approach in Prostate Cancer: Targeting the Cells Surrounding the Tumor](#)

Scientists have found a protein that empowers prostate tumors to resist hormone therapy.

[View All Featured News](#)

## Publications Highlights

### [The neuroendocrine transition in prostate cancer is dynamic and dependent on ASCL1.](#)

Romero R, Chu T, González-Robles TJ, Smith P, Xie Y, Kaur H, Yoder S, Zhao H, Mao C, Kang W, Pulina MV, Lawrence KE, Gopalan A, Zaidi S, Yoo K, Choi J, Fan N, Gerstner O, Karthaus WR, DeStanchina E, Ruggles KV, Westcott PMK, Chaligné R, Pe'er D, Sawyers CL. bioRxiv [Preprint]. 2024 Apr 11:2024.04.09.588557. doi: 10.1101/2024.04.09.588557. PMID: 38645223 Free PMC article. Preprint.

### [Lineage plasticity in prostate cancer depends on JAK/STAT inflammatory signaling](#)

. Chan JM, Zaidi S, Love JR, Zhao JL, Setty M, Wadosky KM, Gopalan A, Choo ZN, Persad S, Choi J, LaClair J, Lawrence KE, Chaudhary O, Xu T, Masilionis I, Linkov I, Wang S, Lee C, Barlas A, Morris MJ, Mazutis L, Chaligne R, Chen Y, Goodrich DW, Karthaus WR, Pe'er D, Sawyers CL. Science. 2022 Sep 9;377(6611):1180-1191. doi: 10.1126/science.abn0478. Epub 2022 Aug 18. PMID: 35981096 Free PMC article.

### [Tumor Microenvironment-Derived NRG1 Promotes Antiandrogen Resistance in Prostate Cancer.](#)

Zhang Z, Karthaus WR, Lee YS, Gao VR, Wu C, Russo JW, Liu M, Mota JM, Abida W, Linton E, Lee E, Barnes SD, Chen HA, Mao N, Wongvipat J, Choi D, Chen X, Zhao H, Manova-Todorova K, de Stanchina E, Taplin ME, Balk SP, Rathkopf DE, Gopalan A, Carver BS, Mu P, Jiang X, Watson PA, Sawyers CL. Cancer Cell. 2020 Aug

10;38(2):279-296.e9. doi: 10.1016/j.ccell.2020.06.005. Epub 2020 Jul 16. PMID: 32679108  
Free PMC article.

---

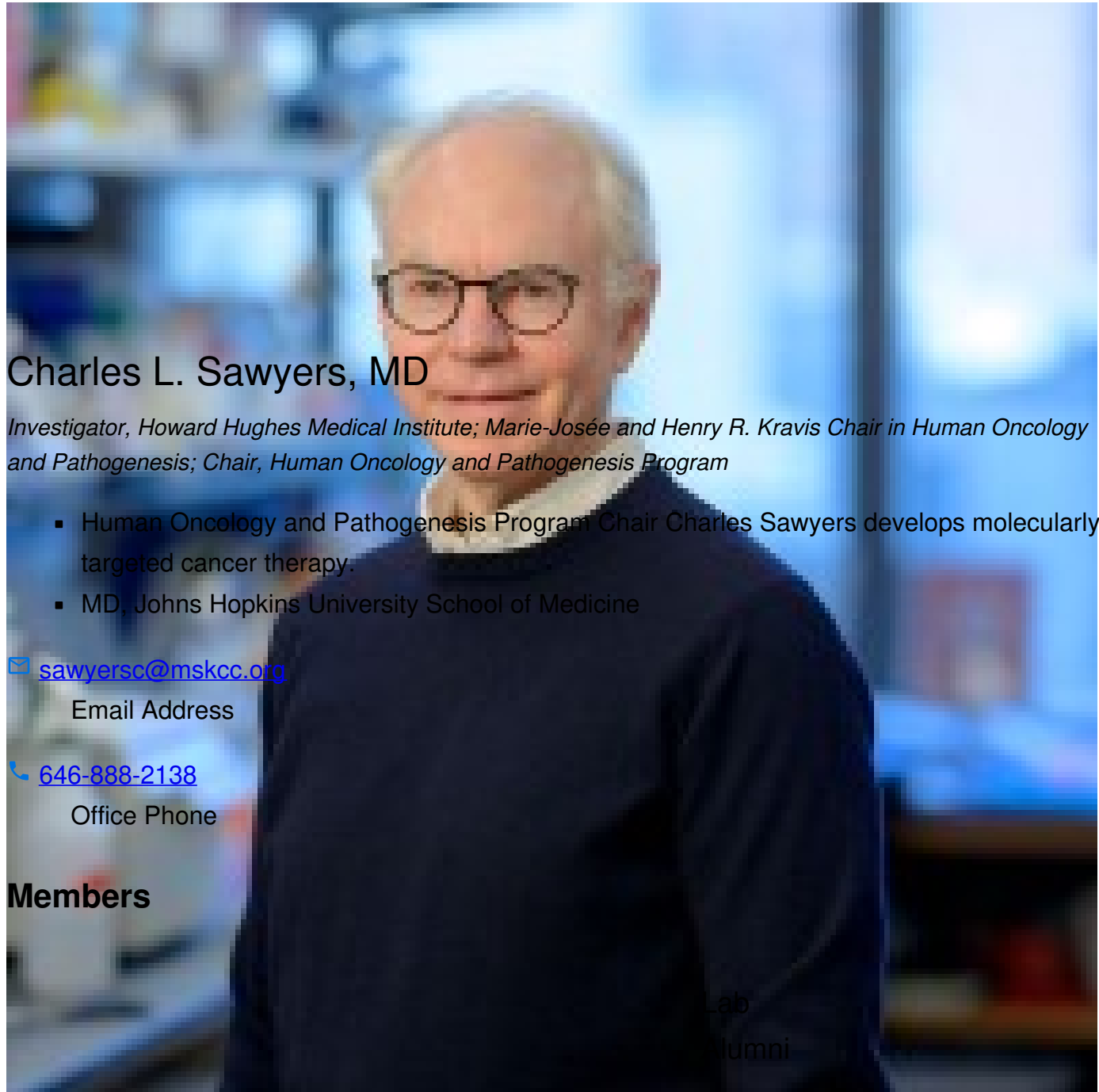
[Regenerative potential of prostate luminal cells revealed by single-cell analysis.](#) Karthaus WR, Hofree M, Choi D, Linton EL, Turkekul M, Bejnood A, Carver B, Gopalan A, Abida W, Laudone V, Biton M, Chaudhary O, Xu T, Masilionis I, Manova K, Mazutis L, Pe'er D, Regev A, Sawyers CL. *Science*. 2020 May 1;368(6490):497-505. doi: 10.1126/science.aay0267. PMID: 32355025 Free PMC article.

---

[FOXA1 mutations alter pioneering activity, differentiation and prostate cancer phenotypes.](#) Adams EJ, Karthaus WR, Hoover E, Liu D, Gruet A, Zhang Z, Cho H, DiLoreto R, Chhangawala S, Liu Y, Watson PA, Davicioni E, Sboner A, Barbieri CE, Bose R, Leslie CS, Sawyers CL. *Nature*. 2019 Jul;571(7765):408-412. doi: 10.1038/s41586-019-1318-9. Epub 2019 Jun 26. PMID: 31243370 Free PMC article.

[View All Publications](#)

## People



# Charles L. Sawyers, MD

*Investigator, Howard Hughes Medical Institute; Marie-Josée and Henry R. Kravis Chair in Human Oncology and Pathogenesis; Chair, Human Oncology and Pathogenesis Program*

- Human Oncology and Pathogenesis Program Chair Charles Sawyers develops molecularly targeted cancer therapy.
- MD, Johns Hopkins University School of Medicine

✉ [sawyersc@mskcc.org](mailto:sawyersc@mskcc.org)

Email Address

☎ [646-888-2138](tel:646-888-2138)

Office Phone

## Members



Wassim Abida  
Associate Member



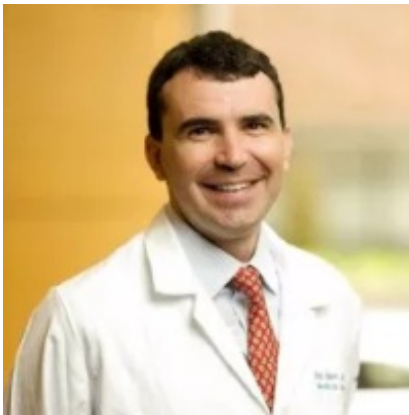
Brett Carver  
Associate Attending

## Lab Affiliations

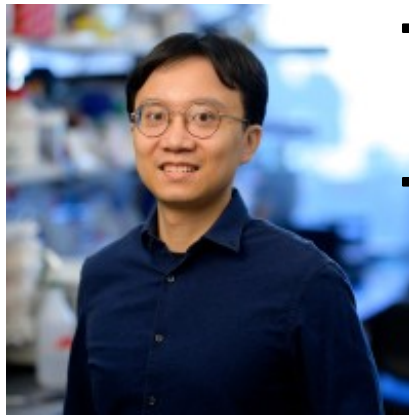
## Achievements

- NCI Alfred G. Knudson Award in Cancer Genetics (2020)
- STAT Biomedical Innovation Award

- (2019)
- AACR Princess Takamatsu Memorial Lectureship and Award (2019)



Eric Bent  
Assistant Attending



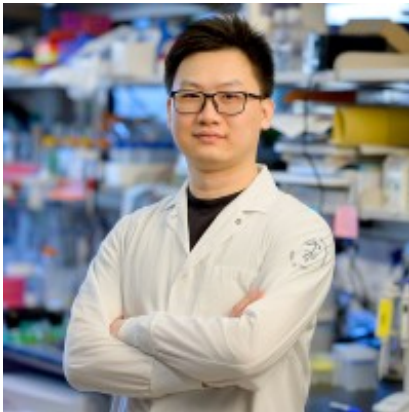
Zhendong Cao  
Research Fellow - HHMI

- The Scheele Award, Swedish Academy of Pharmaceutical Sciences (2017)
- American Cancer Society Medal of Honor (2017)

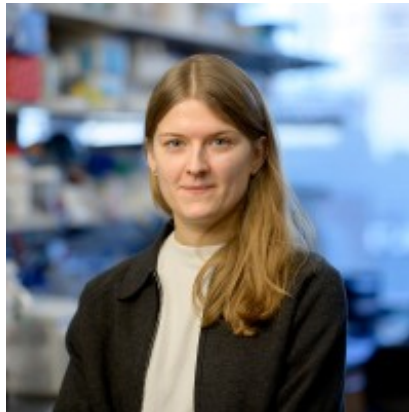
## Open Positions

To learn more about available postdoctoral opportunities, please visit our [Career Center](#)

To learn more about compensation and benefits for postdoctoral researchers at MSK, please visit [Resources for Postdocs](#)



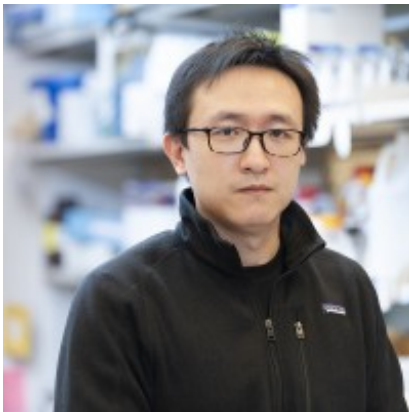
Pan Cheng  
Research Scholar



Agnieszka Chryplewicz  
Research Scholar

## Get in Touch

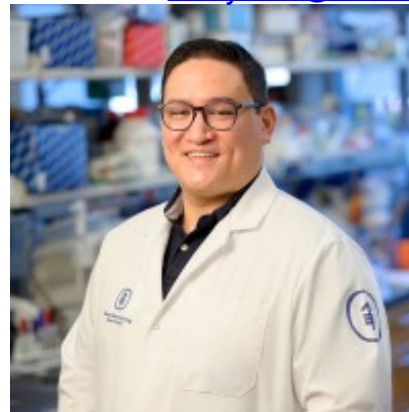
✉ [sawyersc@mskcc.org](mailto:sawyersc@mskcc.org)



Teng Han  
Research Associate

[@sawyerslabmskcc.bsky.social](#)

Jacob ( Jack) Hawk  
Research Technician



Emmet Huang-Hobbs  
Research Scholar

Lab Head  
Email

☎ [646-888-2138](tel:646-888-2138)

Office Phone

☎ [646-888-3462](tel:646-888-3462)

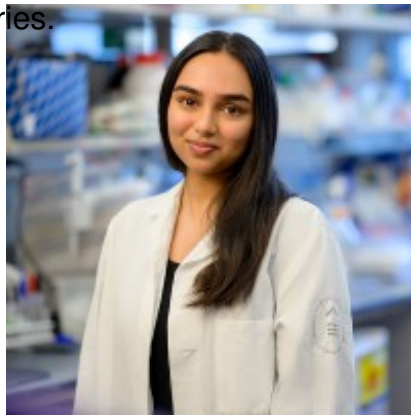
## Disclosures

Members of the MSK Community often work with pharmaceutical, device, biotechnology, and life sciences companies, and other organizations outside of MSK, to find safe and effective cancer treatments, to improve patient care, and to educate the health care community. These activities outside of MSK further our mission, provide productive collaborations, and promote the practical

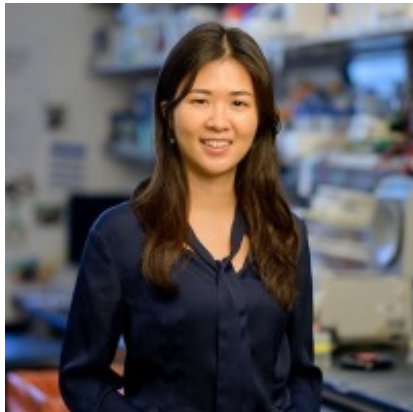
application of scientific discoveries.



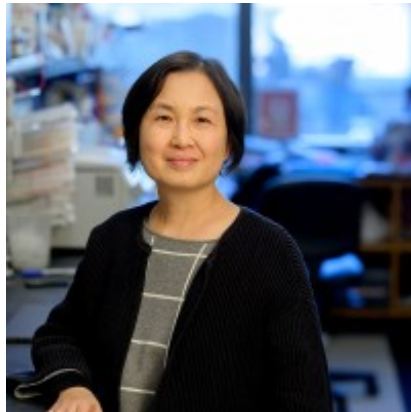
Harmanpreet Kaur  
Research Technician



Zahra Khan  
Research Technician



Young Sun Lee  
MD-PhD Candidate



Ninghui Mao  
Laboratory Manager



Kyrie Pappas  
Senior Research Scientist



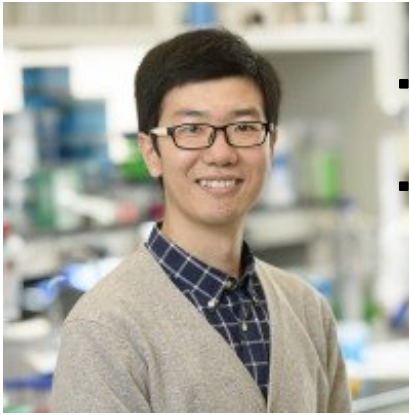
Rodrigo Romero  
Research Associate

MSK requires doctors, faculty members, and leaders to report (“disclose”) the relationships and financial interests they have with external entities. As a commitment to transparency with our community, we make that information available to the public. Not all disclosed interests and relationships present conflicts of interest. MSK reviews all disclosed interests and relationships to assess whether a conflict of interest exists and whether formal COI management is needed.

Charles L. Sawyers discloses the following relationships and financial interests:

- Arsenal IO Canada Parent, Inc.  
Equity; Professional Services and Activities
- BeiGene, Ltd.  
Equity; Professional Services and Activities
- Blueprint Medicines  
Professional Services and Activities
- Column Group  
Equity; Professional Services and Activities
- Diaprost AB  
Intellectual Property Rights

- Foghorn Therapeutics  
Equity; Professional Services and Activities
- Housey Pharmaceutical  
Equity; Professional Services and Activities
- Nextech Venture, LTD  
Equity; Professional Services and Activities
- Novartis



Zhen Sun

Research Associate

Equity

- Oric Pharmaceuticals

Equity; Intellectual Property Rights; Professional Services and Activities

- PMV Pharma

Equity; Professional Services and Activities

The information published here is a complement to other publicly reported data and is for a specific annual disclosure period. There may be differences between information on this and other public sites as a result of different reporting periods and/or the various ways relationships and financial interests are categorized by organizations that publish such data.

---

This page and data include information for a specific MSK annual disclosure period (January 1, 2024 through disclosure submission in spring 2025). This data reflects interests that may or may not still exist. This data is updated annually.

Learn more about MSK's COI policies [here](#) . For questions regarding MSK's COI-related policies and procedures, email MSK's Compliance Office at [ecoi@mskcc.org](mailto:ecoi@mskcc.org) .

[View all disclosures \(https://www.mskcc.org/disclosures\)](https://www.mskcc.org/disclosures)

© 2026 Memorial Sloan Kettering Cancer Center