

Ready to start planning your care? Call us at [800-525-2225](tel:800-525-2225) to make an appointment.

×



Memorial Sloan Kettering
Cancer Center

[Make an Appointment](#)

[← Back](#)

MEMORIAL HOSPITAL RESEARCH LABORATORIES

[Patient & Family Resources](#) [Patient & Family Resources & Treatment](#)

[Refer a Patient](#)

The Christine Iacobuzio-Donahue Lab

ABOUT US

[Our mission, vision & core values](#)

[Leadership](#)

[History](#)

[Equality, diversity & inclusion](#)

[Annual report](#)

[Give to MSK](#)

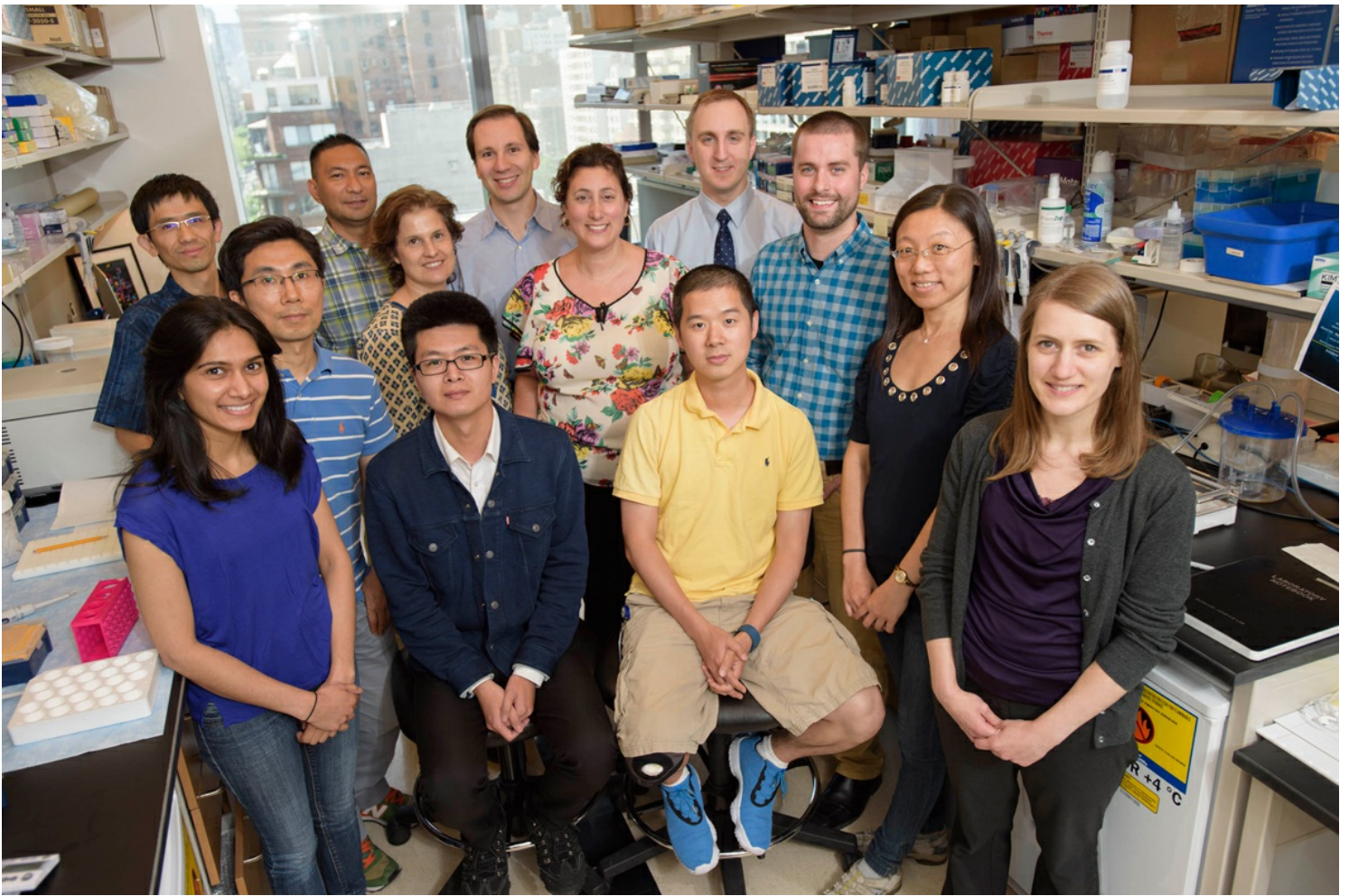


Christine A. Iacobuzio-Donahue, MD, PhD

David M. Rubenstein Center Chair for Pancreatic Cancer Research; Director, Center for Pancreatic Cancer Research

Our lab investigates the fundamental evolutionary mechanisms underlying metastasis using pancreatic cancer as our model tumor type. Metastasis is the result of a series of biological hurdles subject to Darwinian selection including the birth of metastasis-enabled cells within a heterogeneous primary tumor microenvironment, intravasation of these cells into a functional vascular bed, survival in the circulation, extravasation from the vasculature, and establishment of an autonomous cell population within the newly encountered foreign microenvironment.

[View Lab Overview](#) →



Featured News

Q&A



[What Evolution Can Tell Us about How Cancer Spreads](#)

Meet Christine Iacobuzio-Donahue, a physician-scientist who studies cancer metastasis and is collaborating on genetics research with scientists at the American Museum of Natural History.

FINDING



[Two Studies Shed Light on Genetics of Metastatic Pancreatic Cancer](#)

New research of metastatic pancreatic cancer has shown that the same mutations are involved in driving both the primary tumor and the metastases.

Publications Highlights

[Heterogeneity of pancreatic cancer metastases in a single patient revealed by quantitative proteomics. Kim MS, Zhong Y, Yachida S, Rajeshkumar NV, Abel ML, Marimuthu A, Mudgal K, Hruban RH, Poling JS, Tyner JW, Maitra A, Iacobuzio-Donahue CA*, Pandey A. Mol Cell Proteomics. 2014 Jun 3. pii: mcp.M114.038547. *co-senior author](#)

[Clinical significance of the genetic landscape of pancreatic cancer and implications for identification of potential long-term survivors. Yachida S, White CM, Naito Y, Zhong Y, Brosnan JA, Macgregor-Das AM, Morgan RA, Saunders T, Laheru DA, Herman JM, Hruban RH, Klein AP, Jones S, Velculescu V, Wolfgang CL, Iacobuzio-Donahue CA. Clin Cancer Res. 2012 Nov 15;18\(22\):6339-47.](#)

[Computational modeling of pancreatic cancer reveals kinetics of metastasis suggesting optimum treatment strategies. Haeno H, Gonen M, Davis MB, Herman JM, Iacobuzio-Donahue CA*, Michor F. Cell. 2012 Jan 20;148\(1-2\):362-75. *co-senior author](#)

[Distant metastasis occurs late during the genetic evolution of pancreatic cancer. Yachida S, Jones S, Bozic I, Antal T, Leary R, Fu B, Kamiyama M, Hruban RH, Eshleman JR, Nowak MA, Velculescu VE, Kinzler KW, Vogelstein B, Iacobuzio-Donahue CA. Nature. 2010 Oct 28;467\(7319\):1114-7.](#)

[DPC4 gene status of the primary carcinoma correlates with patterns of failure in patients with pancreatic cancer. Iacobuzio-Donahue CA, Fu B, Yachida S, Luo M, Abe H, Henderson CM, Vilardell F, Wang Z, Keller JW, Banerjee P, Herman JM, Cameron JL, Yeo CJ, Halushka MK, Eshleman JR, Raben M, Klein AP, Hruban RH, Hidalgo M, Laheru D. J Clin Oncol. 2009 Apr 10;27\(11\):1806-13.](#)

[View All Publications](#)

People



Christine A. Iacobuzio-Donahue, MD, PhD

David M. Rubenstein Center Chair for Pancreatic Cancer Research; Director, Center for Pancreatic Cancer Research

Physician-scientist Christine Iacobuzio-Donahue studies the genomics and cell biology of pancreatic and other solid tumors as it relates to subclonal evolution, tumor progression, and metastasis.

MD, PhD, Boston University

[View physician profile](#)

Physician profile

Members



Elias-Ramzey
Karnoub
Senior Research
Technician



Helen Martirosova
Research Fellow



Jerry Melchor
Lead Program Manager

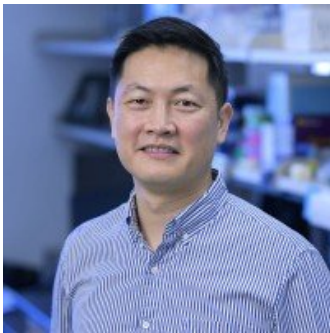


Katelyn Mullen
Graduate Student

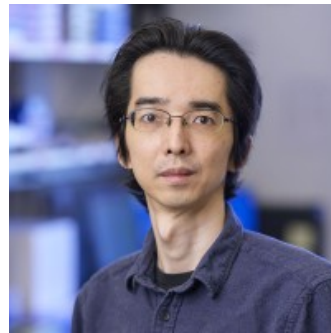
Katelyn Mullen
GSK Graduate Student

Naaz
Nasar
Research Fellow

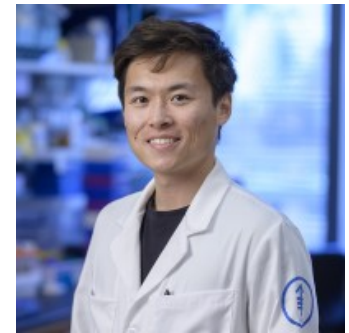
Wungki
Park
Assistant Attending



Zeynep Tarcan
Senior Research Scientist



Shigeaki Umeda
Senior Research Scientist



Haochen Zhang
GSK Graduate Student

Wungki
Park
Assistant Attending

Lab Alumni
+

Lab Affiliations
+

Achievements

Team Science Award, American Association for Cancer Research (2012)
Ramzi Cotran Young Investigator Award, United States and Canadian Academy of Pathology (2009)
AACR-Barletta Foundation Career Development Award in Translational Pancreatic Cancer Research (2005)
Member, Alpha Omega Alpha (2002)
American Society of Clinical Investigators (2015)

Read more
+

Open Positions

To learn more about available postdoctoral opportunities, please visit our [Career Center](#)

To learn more about compensation and benefits for postdoctoral researchers at MSK, please visit [Resources for Postdocs](#)

Career Opportunities

[Apply now](#) →

Disclosures

Doctors and faculty members often work with pharmaceutical, device, biotechnology, and life sciences companies, and other organizations outside of MSK, to find safe and effective cancer treatments, to improve patient care, and to educate the health care community.

MSK requires doctors and faculty members to report (“disclose”) the relationships and financial interests they have with external entities. As a commitment to transparency with our community, we make that information available to the public.

Christine A. Iacobuzio-Donahue discloses the following relationships and financial interests:

Bristol-Myers Squibb

Professional Services and Activities (Uncompensated)

The information published here is for a specific annual disclosure period. There may be differences between information on this and other public sites as a result of different reporting periods and/or the various ways relationships and financial interests are categorized by organizations that publish such data.

This page and data include information for a specific MSK annual disclosure period (January 1, 2022 through disclosure submission in spring 2023). This data reflects interests that may or may not still exist. This data is updated annually.

Learn more about MSK’s COI policies [here](#). For questions regarding MSK’s COI-related policies and procedures, email MSK’s Compliance Office at ecoi@mskcc.org.

[View all disclosures](#) →

Connect

[Contact us](#)

[Locations](#)

APPOINTMENTS

800-525-2225



▾ About MSK

[About us](#)

[Careers](#) 

[Giving](#) 

▾ Cancer Care

[Adult cancer types](#)

[Child & teen cancer types](#)

[Integrative medicine](#)

[Nutrition & cancer](#)

[Find a doctor](#)

▾ Research & Education

[Sloan Kettering Institute](#)

[Gerstner Sloan Kettering Graduate School](#) 

[Graduate medical education](#)

[MSK Library](#) 

[Communication preferences](#)

[Cookie preferences](#)

[Legal disclaimer](#)

[Accessibility statement](#)

[Privacy policy](#)

[Price transparency](#)

[Public notices](#)

© 2024 Memorial Sloan Kettering Cancer Center