

Ready to start planning your care? Call us at [800-525-2225](tel:800-525-2225) to make an appointment.

×



Memorial Sloan Kettering  
Cancer Center

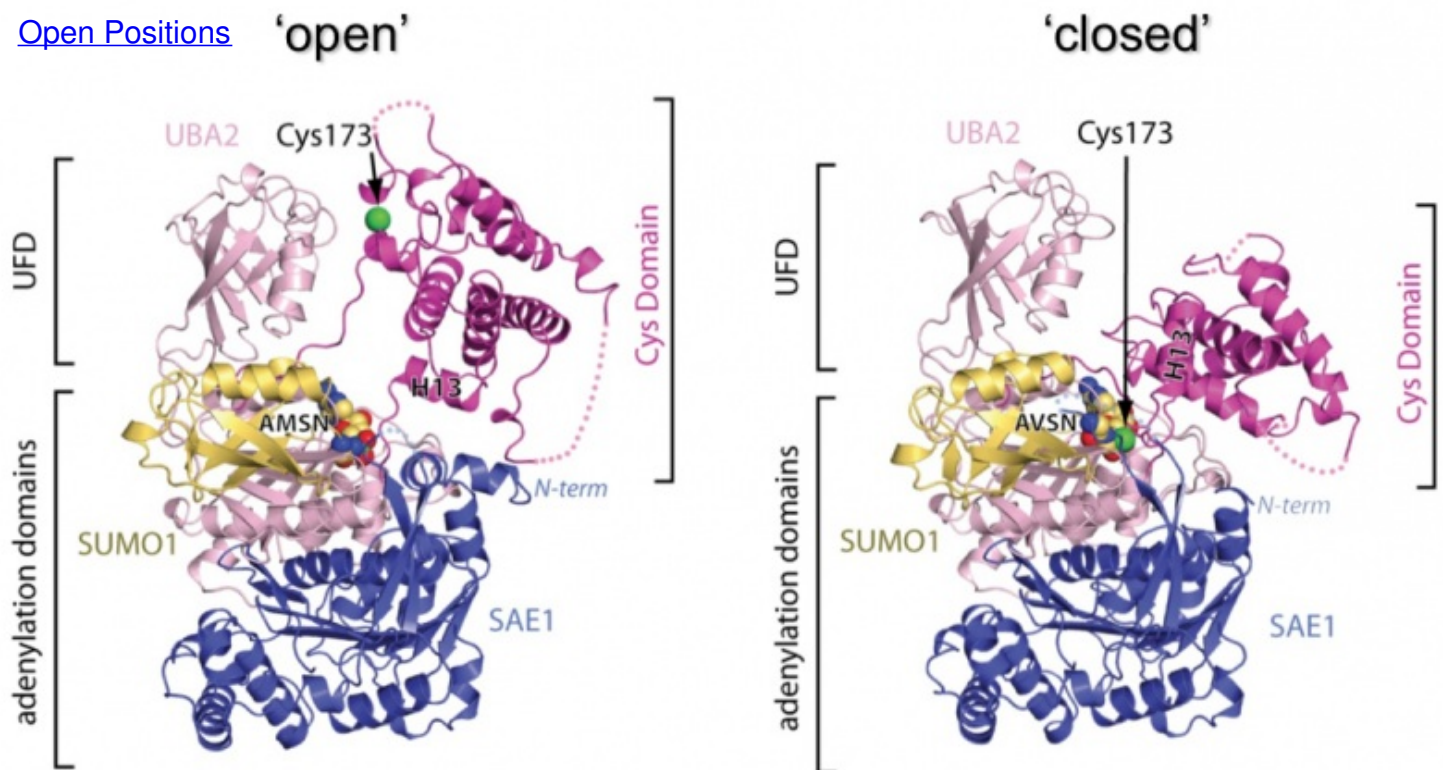
[About Us](#)  
[Sloan Kettering Institute](#)

[The Christopher Lima Lab](#)  
[Research](#)

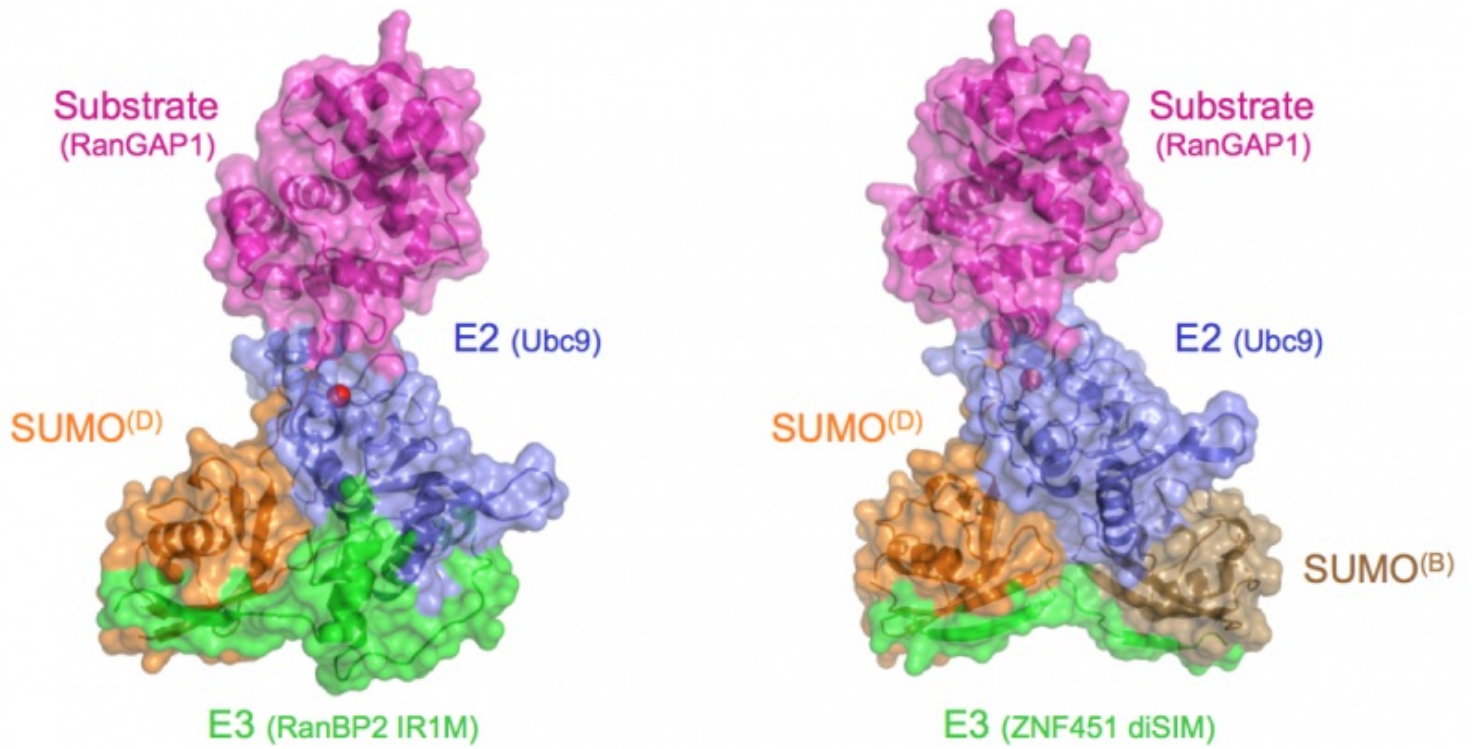
## [Education & Training](#) Ubiquitin and ubiquitin-like protein conjugation

[News & Events](#)

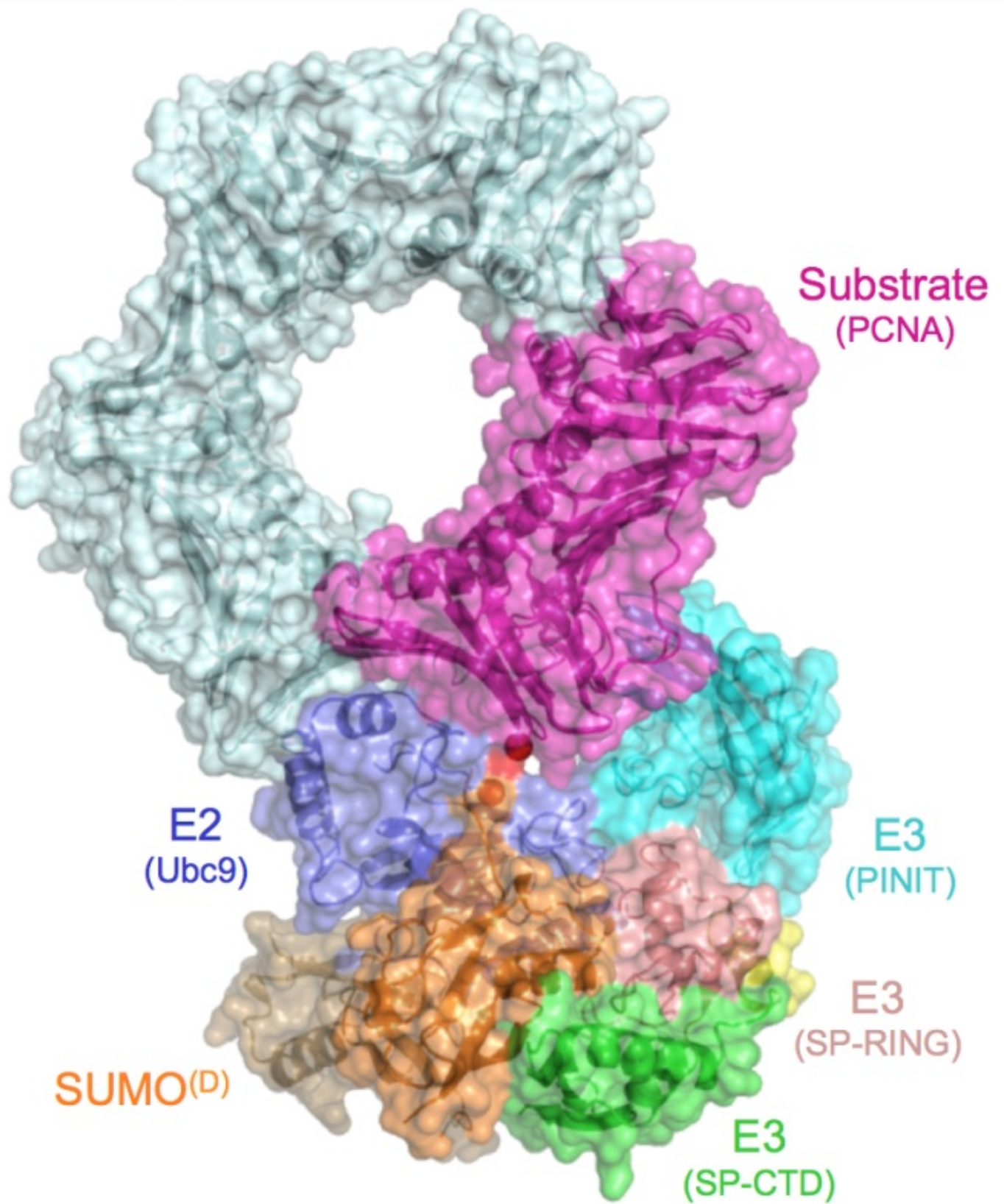
[Open Positions](#)



SUMO E1 captured during thioester bond formation

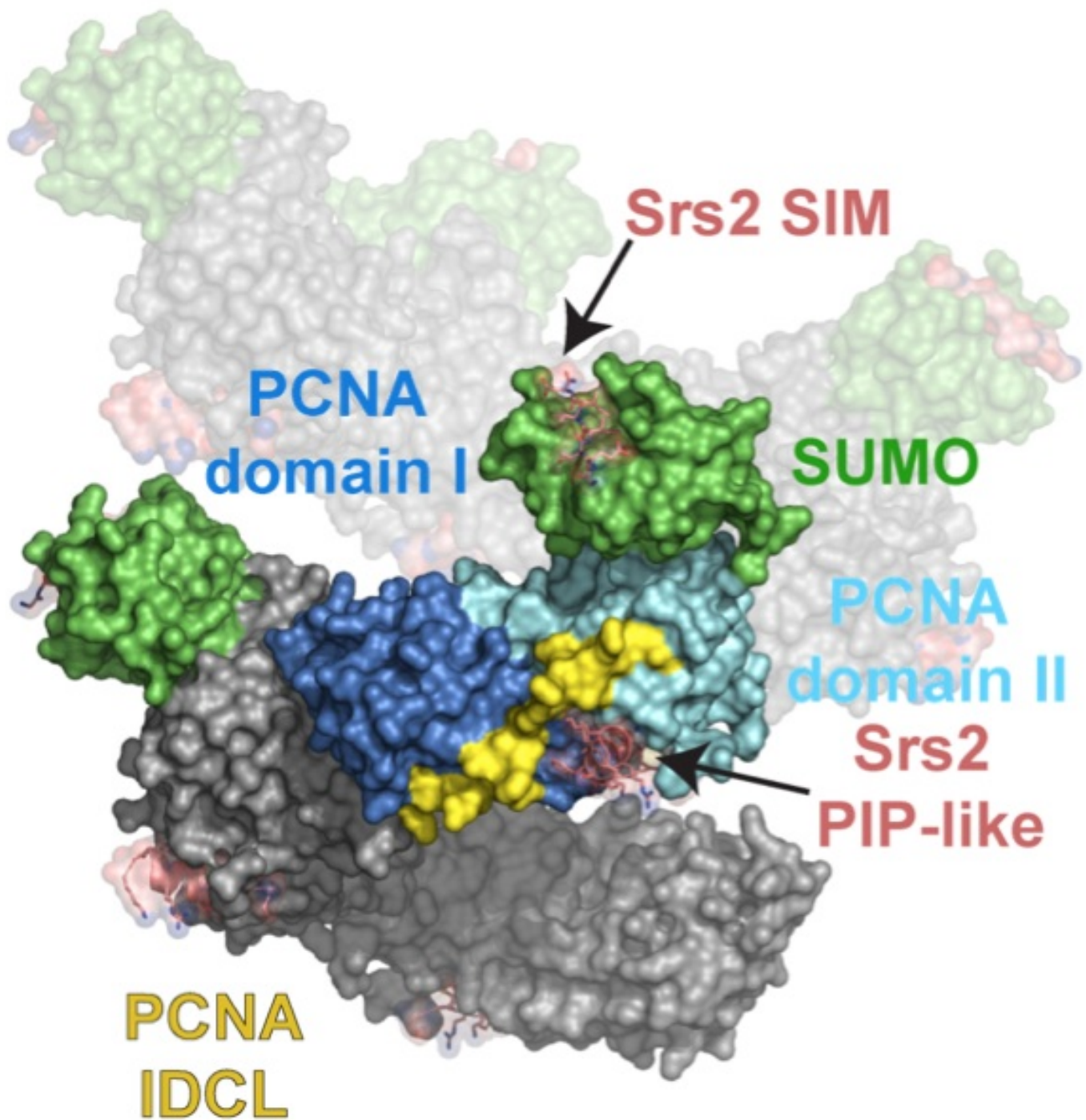


E3-E2 ligase complexes with the RanGAP1 substrate (pink), the E2 Ubc9 (blue), SUMO (orange or brown), and the E3s RanBP2 (left) or ZNF451 (right)



E3-E2-SUMO-PCNA complex captured in action





Recognition of SUMO-PCNA by the the C-terminal domain of the Srs2 helicase

