

SEARCH MOLECULAR PHARMACOLOGY PROGRAM

[Research](#)

# Research

[Alumni](#)



David A. Scheinberg, MD, PhD  
Chair, Center for Experimental Therapeutics, MSK; Deputy Director, Sloan Kettering Institute, for  
Therapeutic Discovery

Professor

---

The overall goals of this laboratory are to develop novel targeted immunotherapies based on effectors of the immune system and to understand their mechanisms of action as well as the mechanisms of resistance to them. This includes antibodies, targeted nano-devices, engineered cells, and active specific agents such vaccines. An important goal is to take these new therapies

into human clinical trials for testing. Examples include a molecular nanogenerator that releases alpha particles inside cancer cells, now being tested in Phase II human trials (*Blood*, 2010), and a vaccine to WT1 in Phase III trials. Read full article in [Science](#) .

We have developed targeted alpha particle therapies, targeted beta emitters, oncogenic protein peptide vaccines, humanized antibodies, each of which reached human clinical trials; More recently we have discovered TCR mimic antibodies to intracellular proteins (*Science Trans. Med.*, 2013), (*Nature Biotech.*, 2015), as well as prototype targeted nano-machines (*Nature Nano*, 2013), and cellular micropharmacies (*Nature Chem.Biol.*, 2021).

## Research Projects

- [Projects](#)



## Featured News



## [At Work: Center for Experimental Therapeutics Chair David Scheinberg](#)

A second-generation physician-scientist, David Scheinberg specializes in caring for patients with leukemia — and developing new ways to treat it.



ANNOUNCEMENT

## [Innovative Partnership Will Speed Drug Discovery and Development](#)

Memorial Sloan Kettering is joining with two other academic institutions in a pioneering collaboration to speed early-stage drug discoveries into therapies for patients.

## [Scientists ID Antibody That Might Boost Cancer Therapy](#)

Physician-scientist David Scheinberg discussed his discovery of a unique monoclonal antibody, a molecule that can be engineered to target specific prot...

[View All Featured News](#)

## Publications Highlights

[Dao T, Yan S, Veomett N, Pankov D, Zhou L, Korontsvit T, Scott A, Whitten J, Maslak P, Casey E, Tan T, Liu H, Zakhaleva V, Curcio M, Doubrovina E, O'Reilly RJ, Liu C, Scheinberg DA. Targeting the intracellular WT1 oncogene product with a therapeutic human antibody. Science translational medicine. 2013;5\(176\):176ra33. Doi: 10.1126/scitranslmed.3005661. PubMed. PMID: PMC3963696.](#)

---

Dao T, Pankov D, Scott A, Korontsvit T, Zakhaleva V, Xu Y, Xiang J, Yan S, de Morais Guerreiro MD, Veomett N, Dubrovsky L, Curcio M, Doubrovina E, Ponomarev V, Liu C,

O'Reilly RJ, Scheinberg DA. Therapeutic bispecific T-cell engager antibody targeting the intracellular oncoprotein WT1. *Nature biotechnology*. 2015;33(10):1079-86. Doi: 10.1038/nbt.3349. PubMed PMID: 26389576; PMCID: PMC4600043.

[View All Publications](#)

## People



**David A. Scheinberg, MD, PhD**  
*Chair, Center for Experimental Therapeutics, MSK; Deputy Director, Sloan Kettering Institute, for Therapeutic Discovery*  
*Professor*

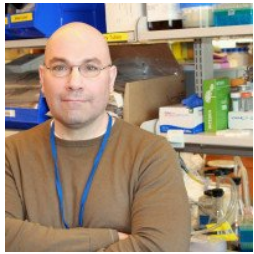
- Molecular Pharmacology Program Member David Scheinberg focuses on the discovery and development of novel, specific immunotherapeutic agents and targeted nanodevices for cancer therapy.
- MD, PhD, Johns Hopkins University School of Medicine

✉ [scheinbd@mskcc.org](mailto:scheinbd@mskcc.org)  
Email Address

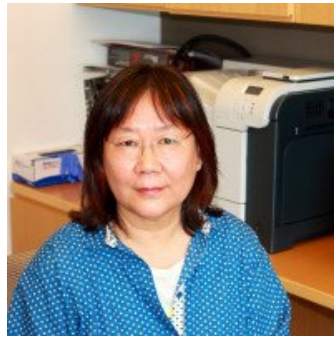
☎ [646-888-2190](tel:646-888-2190)  
Office Phone

👤 [View physician profile](#)  
Physician profile

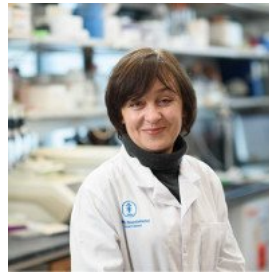
## Members



Michael Curcio  
Research Assistant



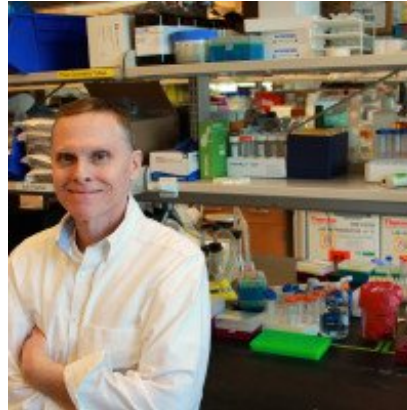
Tao Dao  
Senior Research Scientist



Tatyana Korontsvit  
Research Assistant

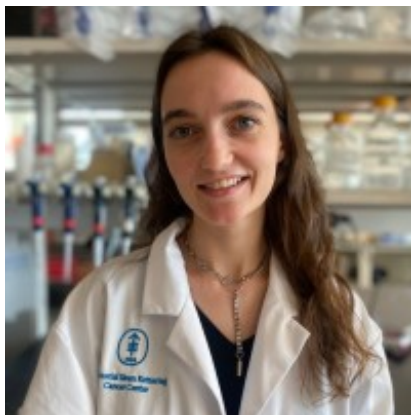
Lab  
Alumni

Lab Affiliations



Michael R. McDevitt  
Laboratory Member

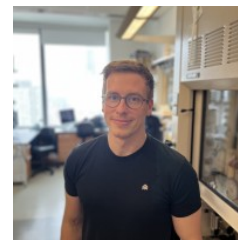
## Lab News & Events



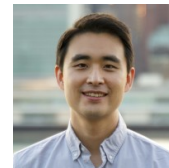
Zita Aretz  
Graduate Student



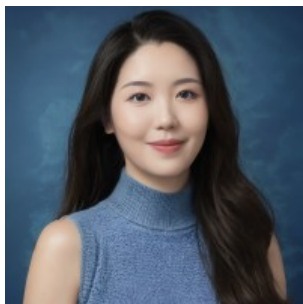
Subha Baniya  
Graduate Student



Raphael Geißen  
Research Fellow



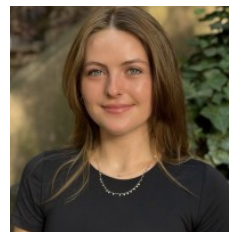
Jaeyop Lee  
Instructor



Qianqian (Skylar) Lin  
Graduate Student



Jeremy P. Meyerberg  
Research Assistant



Kaitlyn Pierpont  
Graduate Student



Stephanie Pierre  
Graduate Student

[View all](#)

## Open Positions

To learn more about available postdoctoral opportunities, please visit our [Career Center](#)

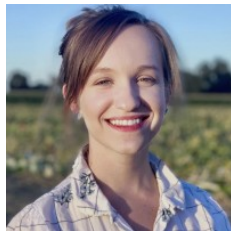


Sarah Qureshy  
Medical Student Research  
Fellow Education

To learn more about compensation and benefits for postdoctoral researchers at MSK, please visit [Resources for Postdocs](#)



Ekaterina Revskaya  
Senior Research Scientist



Sarah Sheridan  
Graduate Student



Akihiko Shiiya  
Research Scholar



Patrick Wallisch  
Graduate Student

## Get in Touch

✉ [scheinbd@mskcc.org](mailto:scheinbd@mskcc.org)

Lab Head Email

☎ [646-888-2190](tel:646-888-2190)

Office Phone

☎ [646-888-2205](tel:646-888-2205)

Lab Phone

Lab Resources

## Disclosures

Members of the MSK Community often work with pharmaceutical, device, biotechnology, and life sciences companies, and other organizations outside of MSK, to find safe and effective cancer treatments, to improve patient care, and to educate the health care community. These activities outside of MSK further our mission, provide productive collaborations, and promote the practical

application of scientific discoveries.

MSK requires doctors, faculty members, and leaders to report (“disclose”) the relationships and financial interests they have with external entities. As a commitment to transparency with our community, we make that information available to the public. Not all disclosed interests and relationships present conflicts of interest. MSK reviews all disclosed interests and relationships to assess whether a conflict of interest exists and whether formal COI management is needed.

David A. Scheinberg discloses the following relationships and financial interests:

- Actinium  
Equity; Intellectual Property Rights; Professional Services and Activities (Uncompensated)
- Arvinas, Inc.  
Equity
- Atengen, Inc.  
Equity; Professional Services and Activities (Uncompensated)
- Century Therapeutics  
Intellectual Property Rights
- Epics Therapeutics S.A.  
Professional Services and Activities
- Estrella Biopharma, Inc.  
Professional Services and Activities
- Eureka Therapeutics Inc  
Equity; Professional Services and Activities (Uncompensated)
- Great Point Partners  
Equity; Professional Services and Activities
  
- Iovance Biotherapeutics, Inc.  
Equity
- Lantheus Medical Imaging, Inc.  
Equity
- Lilly Oncology  
Equity
- Omnipotent Bio Holdings, Inc.  
Equity; Professional Services and Activities
- Pfizer, Inc.  
Equity
- Repertoire Immune Medicines, Inc.  
Professional Services and Activities

- Sapience Therapeutics, Inc.  
Equity; Fiduciary Role / Position
- Sellas Life Science Group  
Equity; Fiduciary Role / Position; Intellectual Property Rights

The information published here is a complement to other publicly reported data and is for a specific annual disclosure period. There may be differences between information on this and other public sites as a result of different reporting periods and/or the various ways relationships and financial interests are categorized by organizations that publish such data.

---

This page and data include information for a specific MSK annual disclosure period (January 1, 2024 through disclosure submission in spring 2025). This data reflects interests that may or may not still exist. This data is updated annually.

Learn more about MSK's COI policies [here](#) . For questions regarding MSK's COI-related policies and procedures, email MSK's Compliance Office at [ecoi@mskcc.org](mailto:ecoi@mskcc.org) .

[View all disclosures \(https://www.sloankettering.edu/disclosures\)](https://www.sloankettering.edu/disclosures)

© 2026 Louis V. Gerstner Jr. Graduate School of Biomedical Sciences Memorial Sloan Kettering Cancer Center