

Ready to start planning your care? Call us at [646-926-0945](tel:646-926-0945) to make an appointment.

×



Memorial Sloan Kettering  
Cancer Center

[Make an Appointment](#)

[Back](#)

HUMAN ONCOLOGY & PATHOGENESIS PROGRAM

[About Memorial Sloan Kettering Cancer Center & Treatment](#)

[About Cancer & Treatment](#)

# The David Solit Lab

What can we help you find today?

ABOUT US

[Our mission, vision & core values](#)

[Leadership](#)

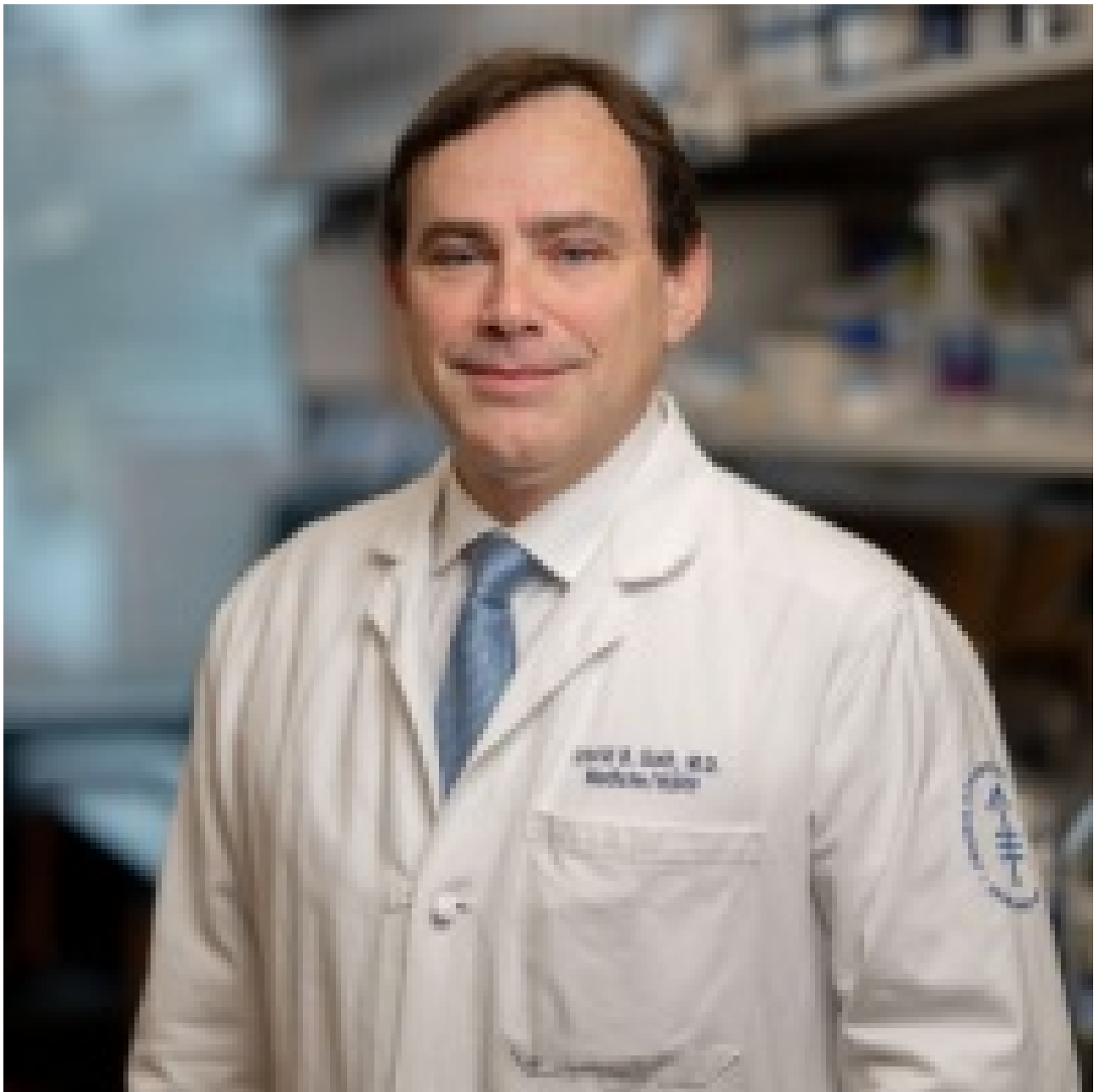
[History](#)

[Inclusion & belonging](#)

[Annual report](#)

[Give to MSK](#)

FOR THE MEDIA



David B. Solit, MD

Co-Director, Marie-Josée & Henry R. Kravis Center for Molecular Oncology

---

Our research is based on the underlying hypothesis that the ability to inhibit an oncogenic pathway and block cancer growth will vary based on cell lineage and the complement of mutations within the tumor. To design rational therapeutic studies, we must define not only the spectrum of genetic changes within particular tumor types but also the mechanisms by which these alterations support tumor growth, survival, metastasis, and other hallmarks of cancer.

[View Lab Overview \(https://www.mskcc.org/research-areas/labs/david-solit/overview\)](https://www.mskcc.org/research-areas/labs/david-solit/overview)

## Research Projects

- [Defining the Temporal Sequence of Oncogenic Mutations in Bladder Cancer](#)
- [Studies on Mechanism\(s\) of De Novo and Acquired Resistance to RAF Inhibitors](#)
- [Whole Genome Sequencing of Outlier Responders to Systemic Cancer Therapies \(Extraordinary Responder Initiative\)](#)



## Featured News

### [Finding Clues in Genes of 'Exceptional Responders'](#)

Physician-scientist David Solit was interviewed about exceptional responders, patients who defy all expectations by responding dramatically to a drug t...



#### EVENT

### [A Sneak Preview of Our Annual “Major Trends” Seminar Live Webcast](#)

Every year, MSK gives high school students and their teachers the opportunity to learn about cutting-edge biomedical research from our scientists.



#### FEATURE

### [Memorial Sloan Kettering Transforms Cancer Research and Care Delivery](#)

Memorial Sloan Kettering’s vision is nothing less than to revolutionize the treatment of cancer. Learn about some of the ways we’re doing it.

[View All Featured News](#)

## Publications Highlights

[Xing F, Persaud Y, Pratilas CA, Taylor BS, Janakiraman M, She QB, Gallardo H, Liu C, Merghoub T, Hefter B, Dolgalev I, Viale A, Heguy A, De Stanchina E, Cobrinik D, Bollag G, Wolchok J, Houghton A, Solit DB. Concurrent loss of the PTEN and RB1 tumor suppressors attenuates RAF dependence in melanomas harboring \(V600E\)BRAF. \*Oncogene\*. 2012 Jan 26;31\(4\):446-57. doi: 10.1038/onc.2011.250. Epub 2011 Jul 4.](#)

[Poulikakos PI, Persaud Y, Janakiraman M, Kong X, Ng C, Moriceau G, Shi H, Atefi M, Titz B, Gabay MT, Salton M, Dahlman KB, Tadi M, Wargo JA, Flaherty KT, Kelley MC, Misteli T, Chapman PB, Sosman JA, Graeber TG, Ribas A, Lo RS, Rosen N, Solit DB. RAF inhibitor resistance is mediated by dimerization of aberrantly spliced BRAF\(V600E\). \*Nature\*. 2011 Nov 23;480\(7377\):387-90. doi: 10.1038/nature10662.](#)

---

[Hanrahan AJ, Schultz N, Westfal ML, Sakr RA, Giri DD, Scarperi S, Janakiraman M, Olvera N, Stevens EV, She QB, Aghajanian C, King TA, Stanchina Ed, Spriggs DR, Heguy A, Taylor BS, Sander C, Rosen N, Levine DA, Solit DB. Genomic complexity and AKT dependence in serous ovarian cancer. \*Cancer Discov.\* 2012 Jan;2\(1\):56-67. doi: 10.1158/2159-8290.CD-11-0170.](#)

---

[Misale S, Yaeger R, Hobor S, Scala E, Janakiraman M, Liska D, Valtorta E, Schiavo R, Buscarino M, Siravegna G, Bencardino K, Cercek A, Chen CT, Veronese S, Zanon C, Sartore-Bianchi A, Gambacorta M, Gallicchio M, Vakiani E, Boscaro V, Medico E, Weiser M, Siena S, Di Nicolantonio F, Solit D, Bardelli A. Emergence of KRAS mutations and acquired resistance to anti-EGFR therapy in colorectal cancer. \*Nature.\* 2012 Jun 28;486\(7404\):532-6. doi: 10.1038/nature11156.](#)

---

[Iyer G, Hanrahan AJ, Milowsky MI, Al-Ahmadie H, Scott SN, Janakiraman M, Pirun M, Sander C, Socci ND, Ostrovnaya I, Viale A, Heguy A, Peng L, Chan TA, Bochner B, Bajorin DF, Berger MF, Taylor BS, Solit DB. Genome sequencing identifies a basis for everolimus sensitivity. \*Science.\* 2012 Oct 12;338\(6104\):221. doi: 10.1126/science.1226344. Epub 2012 Aug 23.](#)

[View All Publications](#)

## People



# David B. Solit, MD

*Co-Director, Marie-Josée & Henry R. Kravis Center for Molecular Oncology*

- Physician-scientist David Solit studies human oncology and pathogenesis, genomics, oncogenes and tumor suppressors, cancer therapeutics, and clinical trials.
- MD, University of Pennsylvania

✉ [solidd@mskcc.org](mailto:solidd@mskcc.org)

Email Address

👤 [View physician profile](#)

Physician profile

👥 **Members**

Lab

Alumni

Lab Affiliations



Alexis M. Jones  
Research Lab Manager



Aphrothiti Hanrahan  
Assistant Lab Member

## Achievements

- Member, American Society for Clinical Investigation (2011)  
Louise and Allston Boyer Young Investigator Award for Basic Research, Memorial Sloan Kettering

▪ Cancer Center (2007)

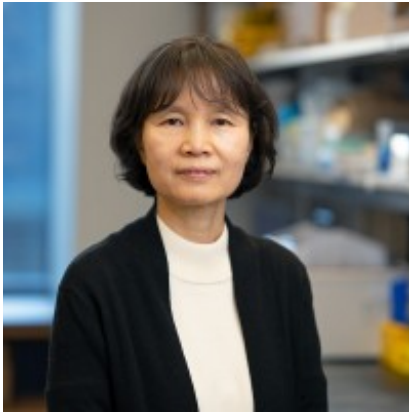


Christina Marciante  
Administrative Assistant

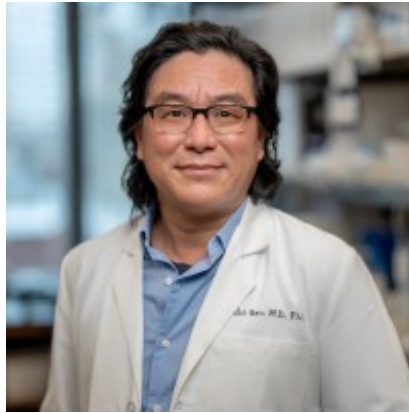


Gopa Iyer  
Assistant Attending,  
Genitourinary Oncology Service

- Kimmel Scholar, Sidney Kimmel Foundation for Cancer Research (2007)
- Career Development Award, American Society of Clinical Oncology (2002)
- Young Investigator Award, American Society of Clinical (2001)



Kwanghee Kim  
Associate Attending Biologist

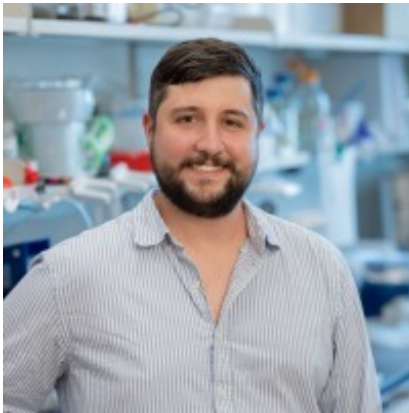


Paul (Sizhi) Gao  
Scientific Research Lead

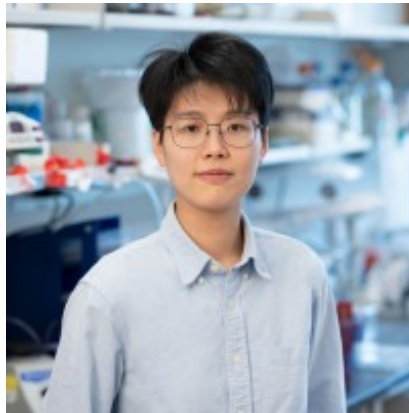
## Open Positions

To learn more about available postdoctoral opportunities, please visit our [Career Center](#)

To learn more about compensation and benefits for postdoctoral researchers at MSK, please visit [Resources for Postdocs](#)



James Rodrigues  
GSK Graduate Student



Josie (Jiaqian) Luo  
Weill Cornell BCMB Graduate Student

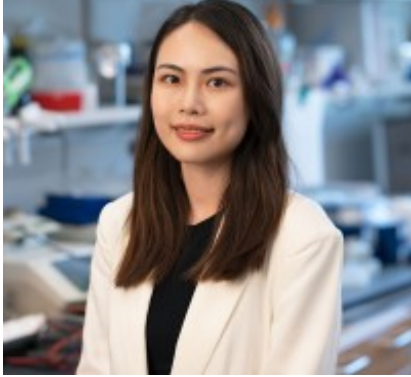
## Career Opportunities

[Apply](#)

[now \(https://www.mskcc.org/research-areas/labs/david-solit/career-opportunities\)](https://www.mskcc.org/research-areas/labs/david-solit/career-opportunities)

## Postdoc Position in Preclinical and Translational Cancer Genomics and Therapeutics

[Apply now \(https://www.mskcc.org/research-areas/labs/david-solit/postdoc-position-preclinical-and-](https://www.mskcc.org/research-areas/labs/david-solit/postdoc-position-preclinical-and-)



Michelle (Xinran) Tang  
Weill Cornell Graduate Student



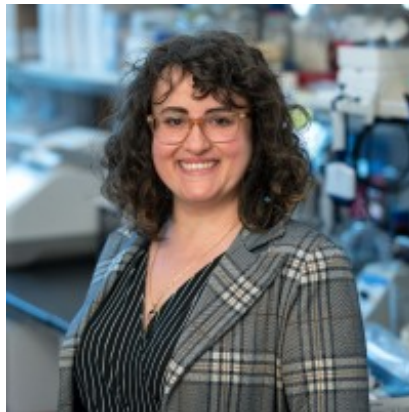
Jordan Eichholz  
Computational Biologist I



Hikmat A. Al-Ahmadie  
Associate Attending  
Pathologist, Memorial Hospital



Cansu Yol  
Senior Research Scientist



Merve Basar  
Senior Research Scientist

## Get in Touch

✉ [solitd@mskcc.org](mailto:solitd@mskcc.org)

Lab Head Email

☎ [646-888-2641](tel:646-888-2641)

For non-clinical issues only

☎ [646-422-4459](tel:646-422-4459)

For patient-related issues

☎ [646-888-2649](tel:646-888-2649)

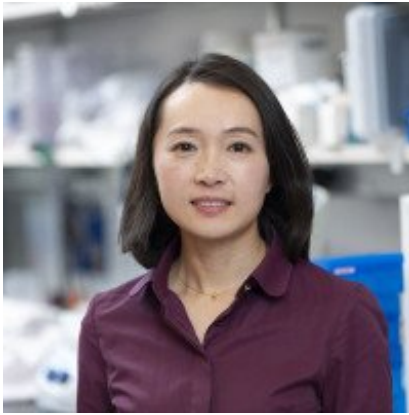
Lab Phone

## Disclosures

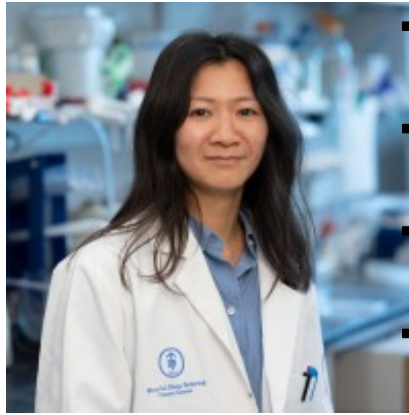
Members of the MSK Community often work with pharmaceutical, device, biotechnology, and life sciences companies, and other organizations outside of MSK, to find safe and effective cancer treatments, to improve patient care, and to educate the health care community. These activities outside of MSK further our mission, provide productive collaborations, and promote the practical application of scientific discoveries.

MSK requires doctors, faculty members, and leaders to report (“disclose”) the relationships and financial interests they have with external entities. As a commitment to transparency with our community, we make that information available to the public. Not all disclosed interests and relationships present conflicts of interest. MSK reviews all disclosed interests and relationships to assess whether a conflict of interest exists and whether formal COI management is needed.

David B. Solit discloses the following relationships and financial interests:



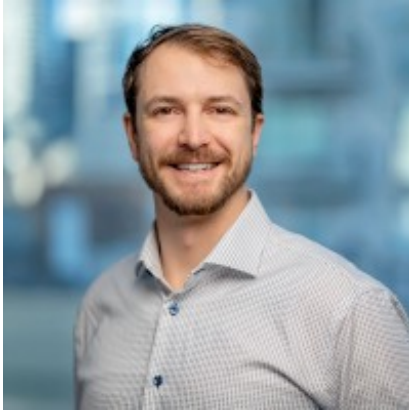
Hui Jiang  
 Research Associate  
 Daniel Barbakoff  
 Medical Student



Lynda Vuong  
 Scientific Research Lead



Jie-Fu Chen  
 Assistant Attending Pathologist



Aaron Gillmor  
 Computational Biologist



Olvania-Danyca Hilaire  
 Senior Research Technician

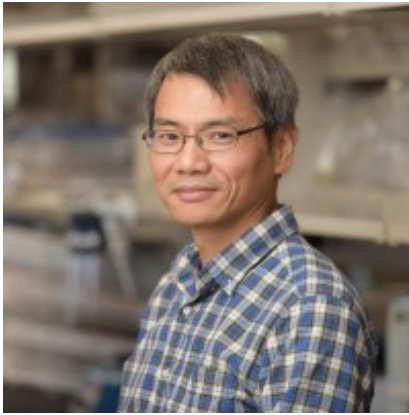
- Antares Therapeutics, Inc.  
Equity
- BridgeBio Inc.  
Professional Services and Activities
- Corramedical, Inc.  
Equity
- Elsie Biotechnologies, Inc.  
Equity; Professional Services and Activities
- Fog Pharmaceuticals, Inc.  
Professional Services and Activities
- Fore Biotherapeutics  
Equity; Professional Services and Activities
- Function Oncology, Inc.  
Equity; Professional Services and Activities
- Meliora Therapeutics  
Professional Services and Activities
- Paige.AI, Inc.  
Professional Services and Activities
- Pfizer, Inc.  
Professional Services and Activities
- Pyramid Biosciences, Inc.  
Equity; Professional Services and Activities
- Scorpion Therapeutics, Inc.  
Equity; Professional Services and Activities

The information published here is a complement to other publicly reported data and is for a specific annual disclosure period. There may be differences between information on

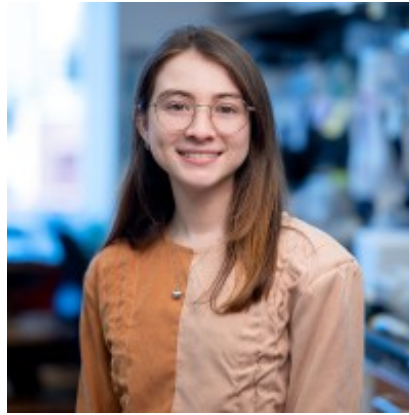
this and other public sites as a result of different reporting periods and/or the various ways relationships and financial interests are categorized by organizations that publish such data.

---

This page and data include information for a specific MSK annual disclosure period (January 1, 2024 through disclosure submission in spring 2025). This data reflects interests that may or may not still exist. This data is updated annually.



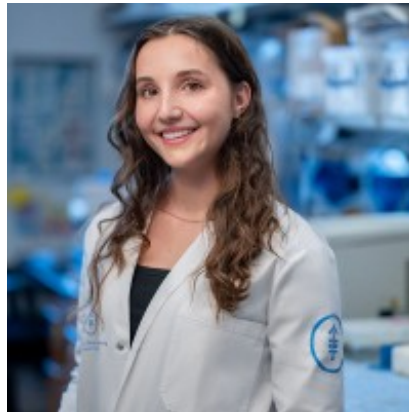
David (Fengshen) Kuo  
Bioinformatics Software  
Engineer



Andrea Lopez-Sanmiguel  
Graduate Research Assistant

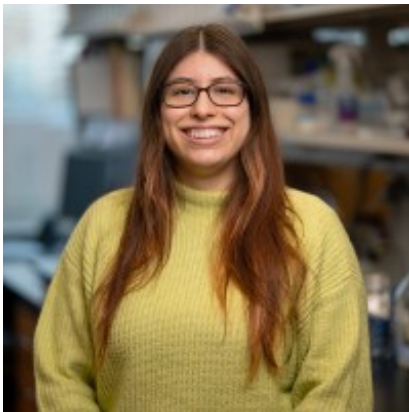
Learn more about MSK’s COI policies [here](#) . For questions regarding MSK’s COI-related policies and procedures, email MSK’s Compliance Office at [ecoi@mskcc.org](mailto:ecoi@mskcc.org) .

[View all](#)

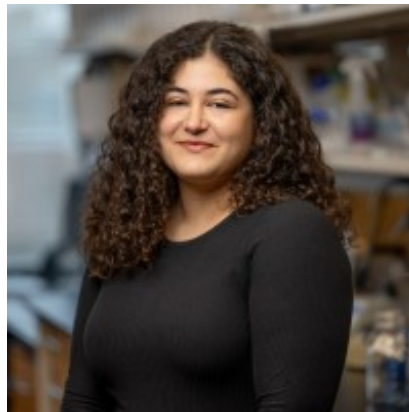


Nicole Rittenhouse  
Research Technician

Ayana Sawai-Frantz  
Research Associate

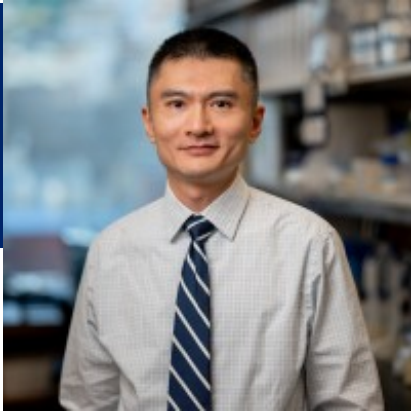


Alejandra Lopez Rojas  
Research Technician



Ecenur Turkey  
GSK Graduate Student

[disclosures \(https://www.mskcc.org/disclosures\)](https://www.mskcc.org/disclosures)



© 2026 Memorial Sloan Kettering Cancer Center

Ao Zhang  
Urologic Oncology Fellow