

Ready to start planning your care? Call us at [800-525-2225](tel:800-525-2225) to make an appointment.

×



Memorial Sloan Kettering
Cancer Center

[About Us](#)
[Sloan Kettering Institute](#)
[The Derek Tan Lab](#)

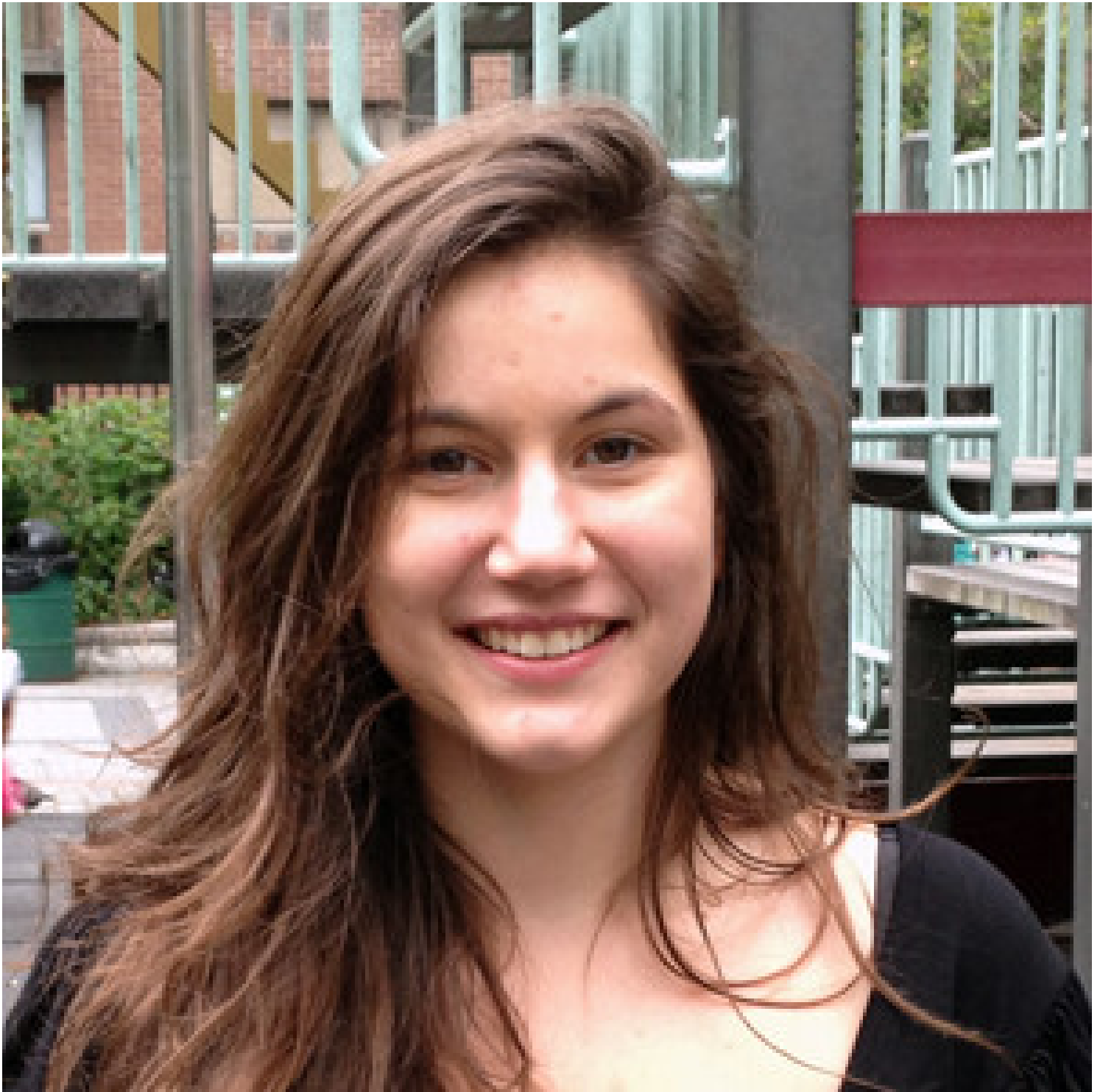
[Research](#)

Nevena Popovic, MPA

[Education & Training](#)
Summer Intern

[News & Events](#)

[Open Positions](#)



Email

popovicn@lafayette.edu

URL

[LinkedIn](#)

Start Year

2013

Analyst, International Equity Division, 2016–present
Morgan Stanley

MPA, School of International and Public Affairs
Columbia University, 2016

BS, Lafayette College, 2014

Summer Undergraduate Research Intern 2013
Gerstner Sloan Kettering Graduate School

Publications

“Effects of increased salinity on glucose and maltose composition of *Biomphalaria glabrata* snails as determined by high-performance thin-layer chromatography-densitometry.

Popovic, N.; Fried, B.*; Sherma, J. *J. Liquid Chromatog. Rel. Technol.* 2012, *35*, 1452–1458.

[[Abstract](#)]

Effects of *Schistosoma mansoni* on the neutral and polar lipids in the liver, spleen, and small intestine of mice as determined by high-performance thin-layer chromatography.

O'Sullivan, C.; Popovic, N.; Fried, B.*; Sherma, J. *J. Planar Chromatog.* 2012, *25*, 259–261.

[[Abstract](#)]

▾ About Us

[Overview](#)

[Leadership](#)

[Administration](#)

[History](#)

[Contact Us](#)



▾ Research

[Overview](#)

[Research programs](#)

[Research labs](#)

[Core facilities & resources](#)

▾ Education & Training

[Overview](#)

[Postdoctoral training](#)

[Gerstner Sloan Kettering Graduate School](#)

[Joint graduate programs](#)

[Programs for college & high school students](#)

▾ News & Events

[Overview](#)

[Seminars & events](#)

▾ Open Positions

[Overview](#)

[Faculty positions](#)

[Postdoctoral positions](#)

[Communication preferences](#)

[Cookie preferences](#)

[Legal disclaimer](#)

[Accessibility Statement](#)

[Privacy policy](#)

[Public notices](#)

© 2024 Memorial Sloan Kettering Cancer Center