

Ready to start planning your care? Call us at [800-525-2225](tel:800-525-2225) to make an appointment.

×



Memorial Sloan Kettering
Cancer Center

[About Us](#)
[Sloan Kettering Institute](#)

CANCER BIOLOGY & GENETICS PROGRAM

[Research](#)

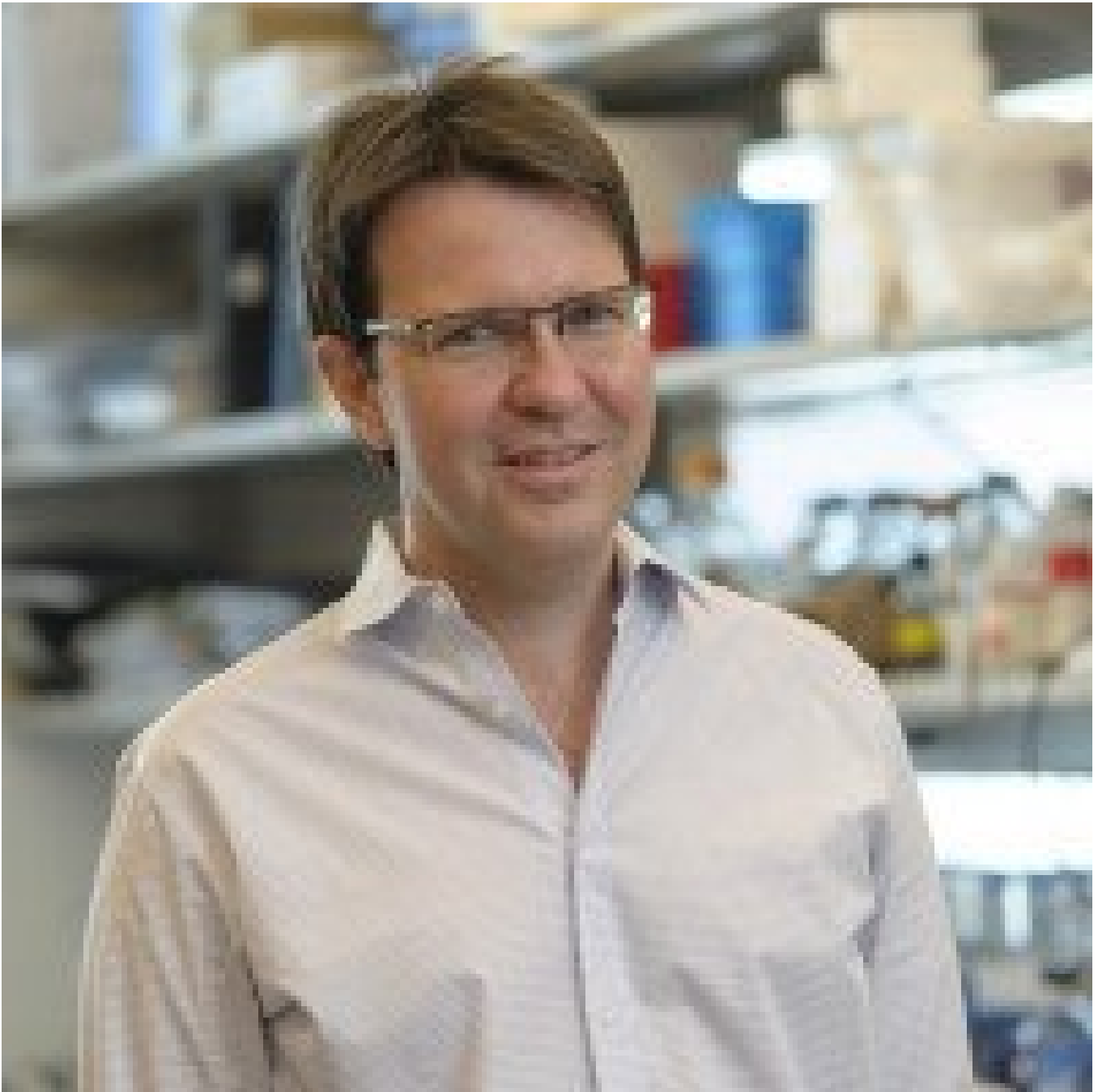
The Hans-Guido Wendel Lab

[Education & Training](#)

Cancer Biology & Genetics Program
[News & Events](#)

Research

[Open Positions](#)



Hans-Guido Wendel, MD

Member/Professor, Cancer Biology & Genetics Program, Memorial Sloan Kettering Cancer Center

Our goal is to develop new cancer therapeutics and we are curious to identify biological vulnerabilities in cancer cells that provide opportunities for attack. Our research explores the molecular and cellular changes that drive cancer cells and ways to create new types of therapeutics including small molecules, engineered immune cells, and antibodies.

We focus on deadly forms of lymphoma and specific areas of interest include: (1) the biology of immune

receptors that control lymphoma growth and shape the microenvironment; (2) oncogenic RNA translation programs; and (3) epigenetic and transcriptional changes that govern the biological and clinical behavior of lymphoma and other cancers. We are guided by the mutational evidence in human cancer that flags critical pathways and processes and we use cutting-edge molecular tools to define underlying mechanisms. We use unbiased CRISPR/CAS9 screens to identify strategies of disrupting cancer drivers and we test our new therapeutic ideas in primary patient xenografts and genetically engineered lymphoma models.

We are always looking for talented trainees at all levels. [See Career Opportunities for details and requirements.](#)

[View Lab Overview](#) →

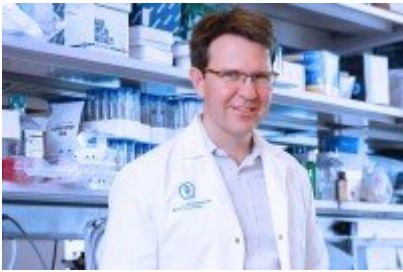


Featured News



[At Work: Cancer Biologist Hans-Guido Wendel](#)

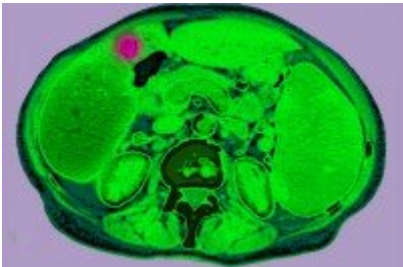
German-born cancer biologist Hans-Guido Wendel is taking advantage of transformative advances in genomics technology to understand key genetic abnormalities in leukemia and lymphoma.



[Tree-Derived Cancer Drug Shows Promise in Treating COVID-19 Virus](#)

Originally explored as a cancer drug, the tree-derived chemical is now being mined for its antiviral properties.

IN THE LAB



[A Metabolic Enzyme Drives Lymphoma and Is a Potential Drug Target](#)

New research from Sloan Kettering Institute investigators pinpoints altered cell metabolism as a cause of B cell lymphoma.

[View All Featured News](#)

Publications Highlights

[The Oncogenic Action of NRF2 Depends on De-glycation by Fructosamine-3-Kinase.](#) Sanghvi VR, Leibold J, Mina M, Mohan P, Berishaj M, Li Z, Miele MM, Lailler N, Zhao C, de Stanchina E, Viale A, Akkari L, Lowe SW, Ciriello G, Hendrickson RC, Wendel HG. Cell. 2019 Aug 8;178(4):807-819.e21. doi: 10.1016/j.cell.2019.07.031.PMID: 31398338

[Loss of the HVEM Tumor Suppressor in Lymphoma and Restoration by Modified CAR-T Cells.](#) Boice M, Salloum D, Mourcin F, Sanghvi V, Amin R, Oricchio E, Jiang M, Mottok A, Denis-Lagache N, Ciriello G, Tam W, Teruya-Feldstein J, de Stanchina E, Chan WC, Malek SN, Ennishi D, Brentjens RJ, Gascoyne RD, Cogné M, Tarte K, Wendel HG. Cell. 2016 Oct 6;167(2):405-418.e13. doi: 10.1016/j.cell.2016.08.032. Epub 2016 Sep 29.PMID: 27693350

[RNA G-quadruplexes cause eIF4A-dependent oncogene translation in cancer.](#) Wolfe AL, Singh K, Zhong Y, Drewe P, Rajasekhar VK, Sanghvi VR, Mavrakis KJ, Jiang M, Roderick JE, Van der Meulen J, Schatz JH, Rodrigo CM, Zhao C, Rondou P, de Stanchina E, Teruya-Feldstein J, Kelliher MA, Speleman F, Porco JA Jr, Pelletier J, Räscher G, Wendel HG. Nature. 2014 Sep 4;513(7516):65-70. doi: 10.1038/nature13485. Epub 2014 Jul 27.PMID: 25079319

[View All Publications](#)

People



Hans-Guido Wendel, MD

Member/Professor, Cancer Biology & Genetics Program, Memorial Sloan Kettering Cancer Center

Cancer biologist Hans-Guido Wendel pursues both disease-centered and basic discovery research. The disease focus is on lymphocyte malignancies and the basic science arm of the lab explores fundamental mechanisms that control aberrant mRNA translation programs in cancer. Work in these two research areas frequently intersects in surprising ways.

Medical School of the Technical University of Aachen, Germany

Medical School of the University of Edinburgh, UK

Residency in Internal Medicine, University of Aachen, Germany

Postdoctoral Research, Cold Spring Harbor Laboratory

✉ wendelh@mskcc.org

Email Address

☎ [646-888-2526](tel:646-888-2526)

Office Phone

Members



Javier de la Rosa



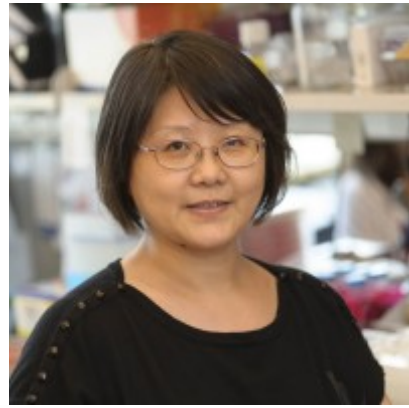
Nadine Hernandez

Jieun Jeong

Research Technician

Senior Research Scientist

Senior Administrative
Assistant



Man Jiang

Senior Research Assistant

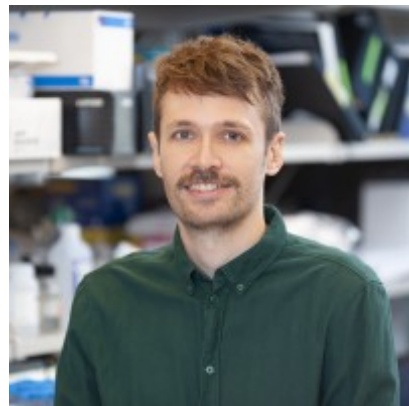
Sagarajit
Mohanty

Research Scholar



Ana Cadete
Portelinha

Senior Research Scientist



Aleksander
Rust

Research Associate



Urmila Sehrawat

Research Scholar



Soumya
Sharma

Graduate Student

Lab Alumni

+

Lab Affiliations

+

Achievements

National Cancer Institute “Outstanding Investigator Award”

Winner Glaxo Smith Kline Discovery Award

Member, American Society for Clinical Investigation

Scholar of the Leukemia and Lymphoma Society

Scholar of the American Cancer Society

Read more

+

Open Positions

To learn more about available postdoctoral opportunities, please visit our [Career Center](#)

To learn more about compensation and benefits for postdoctoral researchers at MSK, please visit [Resources for Postdocs](#)

Career Opportunities

[Apply now](#) →

Get in Touch

✉ wendelh@mskcc.org

Lab Head Email

☎ [646-888-2526](tel:646-888-2526)

Office Phone

Disclosures

Doctors and faculty members often work with pharmaceutical, device, biotechnology, and life sciences companies, and other organizations outside of MSK, to find safe and effective cancer treatments, to improve patient care, and to educate the health care community.

MSK requires doctors and faculty members to report (“disclose”) the relationships and financial interests they have with external entities. As a commitment to transparency with our community, we make that information available to the public.

Hans-Guido Wendel discloses the following relationships and financial interests:

No disclosures meeting criteria for time period

The information published here is for a specific annual disclosure period. There may be differences between information on this and other public sites as a result of different reporting periods and/or the various ways relationships and financial interests are categorized by organizations that publish such data.

This page and data include information for a specific MSK annual disclosure period (January 1, 2022 through disclosure submission in spring 2023). This data reflects interests that may or may not still exist. This data is updated annually.

Learn more about MSK’s COI policies [here](#). For questions regarding MSK’s COI-related policies and procedures, email MSK’s Compliance Office at ecoi@mskcc.org.

[View all disclosures](#) →

[Communication preferences](#)

[Cookie preferences](#)

[Legal disclaimer](#)

[Accessibility Statement](#)

[Privacy policy](#)

[Public notices](#)

© 2024 Memorial Sloan Kettering Cancer Center