



Gerstner Sloan Kettering
Graduate School of Biomedical Sciences

[Welcome to GSK](#)

MEMORIAL HOSPITAL RESEARCH LABORATORIES

[Admissions](#)

The Jason Lewis Lab

[Cancer Biology](#)

Faculty

[Cancer Engineering](#)

Research

[Research](#)

[Alumni](#)



Jason S. Lewis, PhD
Emily Tow Chair in Oncology

Professor

The Lewis lab research interests are focused on the development of radiopharmaceuticals for targeted diagnosis and treatment of cancer. By combining small- and biomolecule-based targeting agents with positron-emitting or therapeutic radioisotopes, we can interrogate molecular profiles of cancer using noninvasive nuclear imaging or treat tumors specifically with endoradiotherapy. Our research program is a

molecular-imaging-based program focused on the targeting of nonstandard nuclides, with an emphasis on developing these novel radiopharmaceuticals for clinical translation. A few examples of our work are given below.

[View Lab Overview](#) →



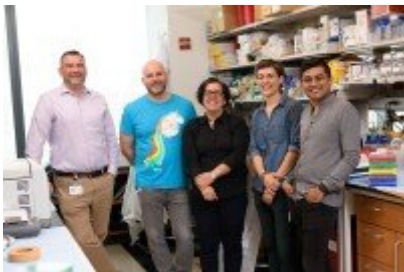
Featured News



[At Work: Radiochemistry Service Chief Jason Lewis](#)

Radiochemist Jason Lewis works to develop new radiopharmaceuticals used in diagnosing and treating cancer.

FEATURE



[Out of the Closet, into the Lab: Five LGBTQ Scientists Share Their Stories](#)

What's it like being LGBTQ in the world of science? We asked some MSK scientists to find out.

IN THE CLINIC



[How Our New Particle Accelerator Will Make Cancer Imaging and Treatment More Precise](#)

The launch of a 20-ton instrument and a facility for producing radioactive imaging molecules will allow our doctors and scientists to monitor cancers in unparalleled detail.

[View All Featured News](#)

Publications

[Viola-Villegas NT, Carlin SD, Ackerstaff E, Sevak KK, Divilov V, Serganova I, Kruchevsky N, Anderson M, Blasberg RG, Andreev OA, Engelman DM, Koutcher JA, Reshetnyak YK, Lewis JS. Understanding the Pharmacological Properties of a Metabolic PET Tracer in Prostate Cancer, Proceedings of the National Academy of Sciences \(PNAS\), 111, 7254-7259, 2014.](#)

[Venneti S, Dunphy MP, Zhang H, Pitter KL, Zanzonico P, Campos C, Carlin SD, La Rocca G, Lyashchenko SK, Ploessl K, Rohle D, Omuro AM, Cross JR, Brennan CW, Weber WA, Holland](#)

[EC, Mellinghoff IK, Kung HF, Lewis JS*, Thompson CB*. Glutamine Based PET Imaging Facilitates Enhanced Metabolic Evaluation of Gliomas In Vivo. Science Translational Medicine, 7, 274ra17, 2015.](#)

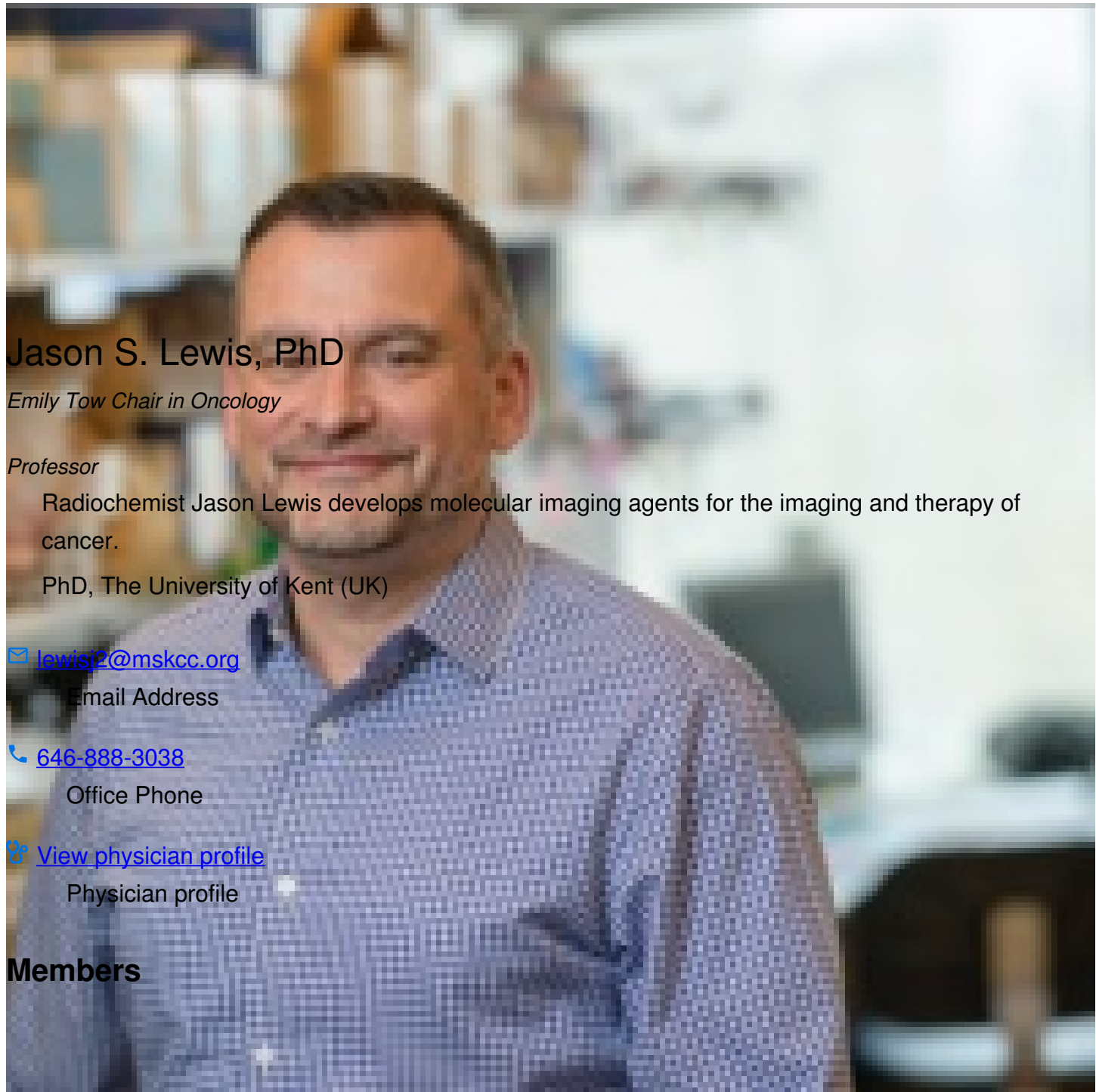
[Spratt DE, Evans MJ, Davis BJ, Doran MG, Lee MX, Shah N, Wongvipat J, Carnazza KE, Klee GG, Polkinghorn W, Tindall DJ, Lewis JS*, Sawyers CL*. Androgen receptor upregulation mediates radioresistance after ionizing radiation. Cancer Research, 75, 4688-4696 2015.](#)

[Houghton JL, Zeglis BM, Abdel-Atti D, Aggeler R, Sawada R, Agnew BJ, Scholz WW, Lewis JS. Site-Specifically Labeled CA19.9-Targeted Immunoconjugates for the PET, NIRF, and Multimodal PET/NIRF Imaging of Pancreatic Cancer. Proceedings of the National Academy of Sciences \(PNAS\), 112, 15850-15855, 2015.](#)

[Houghton JL, Membreno R, Abdel-Atti D, Cunanan KM, Carlin S, Scholz WW, Zanzonico PB, Lewis JS, Zeglis BM. Establishment of the In Vivo Efficacy of Pretargeted Radioimmunotherapy Utilizing Inverse Electron Demand Diels-Alder Click Chemistry. Molecular Cancer Therapeutics, 16, 124-133, 2017.](#)

[View All Publications](#)

People



Jason S. Lewis, PhD

Emily Tow Chair in Oncology


Professor

Radiochemist Jason Lewis develops molecular imaging agents for the imaging and therapy of cancer.

PhD, The University of Kent (UK)

 lewisj2@mskcc.org

Email Address

 [646-888-3038](tel:646-888-3038)

Office Phone

 [View physician profile](#)

Physician profile

Members



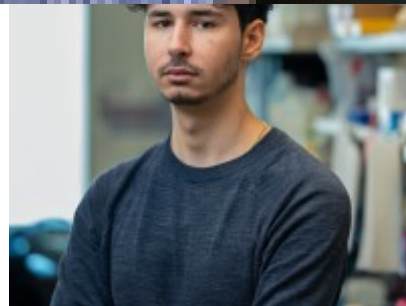
Afruja Ahad

Graduate Research



David

Bauer

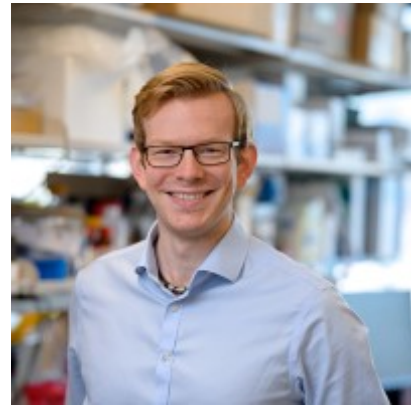


Roberto Degregorio

Research Technician

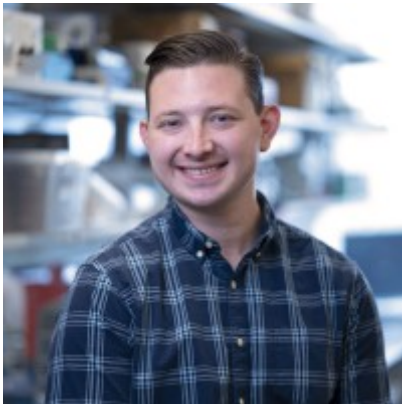
Assistant

Research Fellow



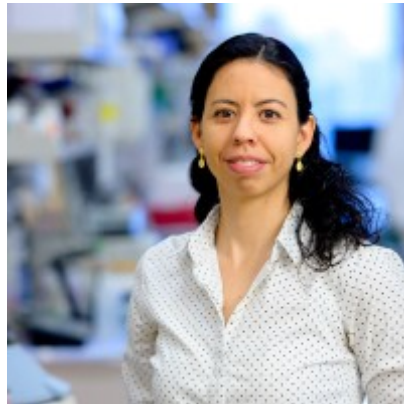
Ruediger Exner

Research Fellow



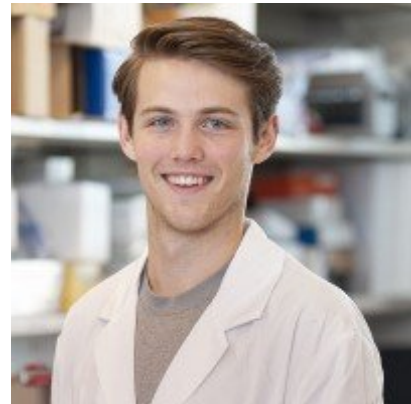
Kevin Fisher

Senior Administrative
Assistant



Moralba Dominguez
Garcia

Research Scholar



Justin Hachey

Graduate Student

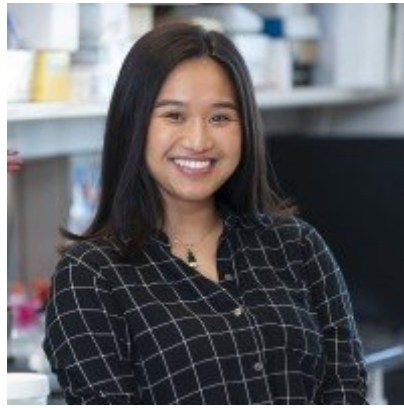


Shaniqua
Hayes

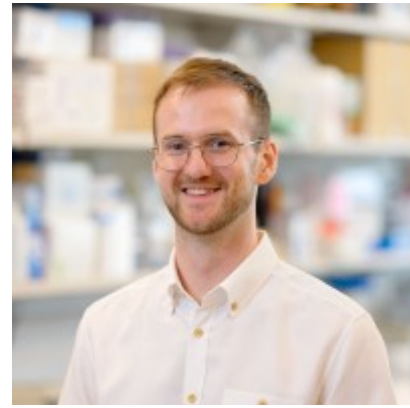
Research Fellow



Natalia Herrero
Alvarez
Research Scholar



Tran Hoang
Graduate Student



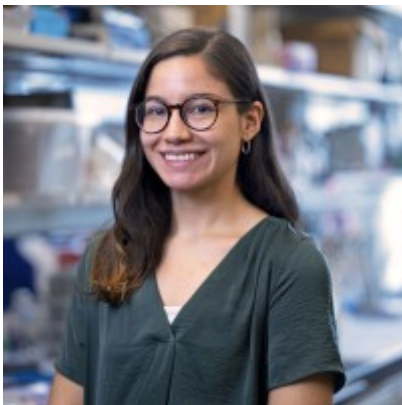
Aidan Ingham
Research Scholar



Paul Klauser
Research Fellow



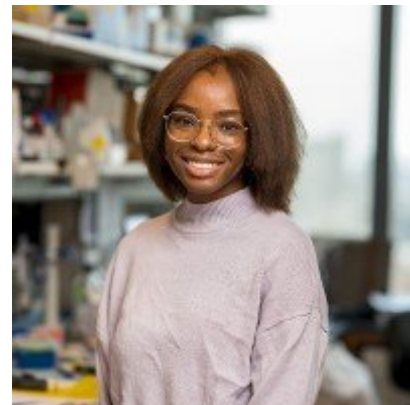
Simone Krebs
Assistant Attending



Angelique Loor
Lab Technician



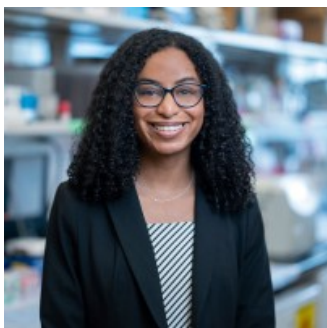
Kyearea Mack
Graduate Student



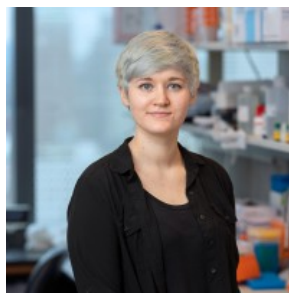
Olufolake
Majekodunmi
Graduate Student



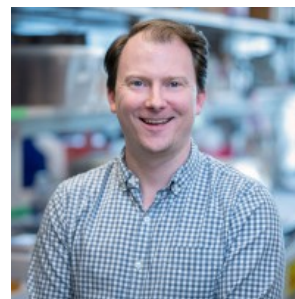
Alexa
Michel
Research Technician



Candace Parker
Research Scholar



Rachel
Payne



Edwin C. Pratt
Research Scholar



Salomon Tendler
Research Fellow



Darren
Veach
Associate Attending
Chemist



Tara
Viray
Research Technician

Lab Alumni
+

Lab Affiliations

+

Achievements

2023 ACS - Glenn T. Seaborg Award for Nuclear Chemistry

2021 Gold Medal for Lifetime Achievement, World Molecular Imaging Society

2020 American Chemical Society Bioconjugate Chemistry Lecture Award

Paul C. Aebersold Award, ERF-SNMMI (2019)

NCI R35 Outstanding Investigator Award (2019-2026)

Read more

+

Get in Touch

 lewisj2@mskcc.org

Lab Head Email

 [646-888-3038](tel:646-888-3038)

Office Phone

Disclosures

Doctors and faculty members often work with pharmaceutical, device, biotechnology, and life sciences companies, and other organizations outside of MSK, to find safe and effective cancer treatments, to improve patient care, and to educate the health care community.

MSK requires doctors and faculty members to report (“disclose”) the relationships and financial interests they have with external entities. As a commitment to transparency with our community, we make that information available to the public.

Jason S. Lewis discloses the following relationships and financial interests:

Alpha-9 Theranostics Inc.

Equity; Professional Services and Activities

CSRA Inc.

Professional Services and Activities

CheMatech

Intellectual Property Rights

Clarity Pharmaceuticals

Equity; Professional Services and Activities

Daiichi Sankyo

Intellectual Property Rights

Diaprost AB

Intellectual Property Rights

Earli Inc.

Professional Services and Activities

Elsevier

Professional Services and Activities

Elucida Oncology

Intellectual Property Rights

Evergreen Theragnostics

Equity; Professional Services and Activities (Uncompensated)

Inhibrx, Inc.

Professional Services and Activities

Journal of Nuclear Medicine

Professional Services and Activities

Nextech Venture, LTD

Professional Services and Activities

Samus Therapeutics LLC

Intellectual Property Rights

Suba Therapeutics, Inc.

Equity; Professional Services and Activities

Summit Biomedical Imaging, LLC

Equity

TPG Capital

Professional Services and Activities

Telix Pharmaceuticals Limited

Equity; Professional Services and Activities (Uncompensated)

Theragnostics, Ltd.

Intellectual Property Rights

Trace-Ability, Inc.

Equity

World Molecular Imaging Society

Professional Services and Activities

pHLIP, Inc.

Equity; Intellectual Property Rights; Professional Services and Activities

The information published here is for a specific annual disclosure period. There may be differences between information on this and other public sites as a result of different reporting periods and/or the various ways relationships and financial interests are categorized by organizations that publish such data.

This page and data include information for a specific MSK annual disclosure period (January 1, 2022 through disclosure submission in spring 2023). This data reflects interests that may or may not still exist. This data is updated annually.

Learn more about MSK's COI policies [here](#). For questions regarding MSK's COI-related policies and procedures, email MSK's Compliance Office at ecoi@mskcc.org.

[View all disclosures](#) →

[Communication preferences](#)

[Cookie preferences](#)

[Legal disclaimer](#)

[Accessibility Statement](#)

[Privacy policy](#)

[Public notices](#)

© 2024 Louis V. Gerstner Jr. Graduate School of Biomedical Sciences Memorial Sloan Kettering Cancer Center