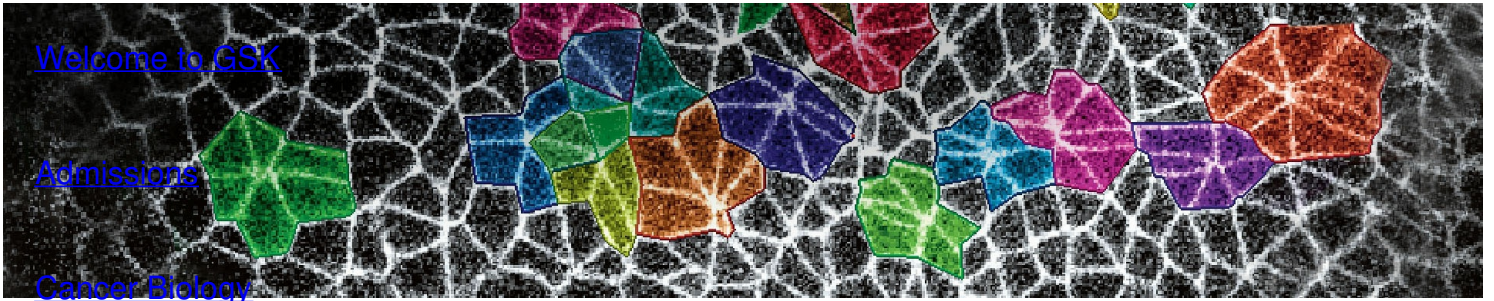




Gerstner Sloan Kettering
Graduate School of Biomedical Sciences



[Welcome to GSK](#)

[Admissions](#)

[Cancer Biology](#)

DEVELOPMENTAL BIOLOGY PROGRAM

[Cancer Engineering](#)

The Jennifer Zallen Lab

[Research](#)

Research

[Alumni](#)



Jennifer A. Zallen, PhD

Member, Developmental Biology Program, SKI; Investigator, Howard Hughes Medical Institute

Professor

Our lab focuses on the generation of tissue structure through the collective action of cell populations.

[View Lab Overview](https://www.sloankettering.edu/research-areas/labs/jennifer-zallen/overview) (<https://www.sloankettering.edu/research-areas/labs/jennifer-zallen/overview>)

Publications Highlights

[Brooks ER, Moorman AR, Bhattacharya B, Prudhomme IS, Land M, Alcorn HL, Sharma R, Pe'er D, Zallen JA. A single-cell atlas of spatial and temporal gene expression in the mouse cranial neural plate. bioRxiv. 2024. Dec 12:2024.08.25.609458 .](#)

[Gredler ML, Zallen JA. Multicellular rosettes link mesenchymal-epithelial transition to radial intercalation in the mouse axial mesoderm. Dev Cell. 2023; 58\(11\):933-50.e5.](#)

[Tamada M, Shi J, Bourdot KS, Supriyatno S, Palmquist KH, Gutierrez-Ruiz OL, Zallen JA. Toll receptors remodel epithelia by directing planar-polarized Src and PI3K activity. Developmental Cell. 2021; S1534-5807\(21\)00321-X.](#)

[Yu HH, Zallen JA. Abl and Canoe/Afadin mediate mechanotransduction at tricellular junctions. Science. 2020; 370\(6520\).](#)

[Brooks ER, Islam MT, Anderson KV, Zallen JA. Sonic hedgehog signaling directs patterned cell remodeling during cranial neural tube closure. Elife. 2020;9:e60234.](#)

[View All Publications](#)

People



Jennifer A. Zallen, PhD

Member, Developmental Biology Program, SKI; Investigator, Howard Hughes Medical Institute

Professor

- The Zallen laboratory focuses on the generation of tissue structure through the collective action of cell populations.
- PhD, University of California, San Francisco

✉ zallenj@mskcc.org

Email Address

☎ [212-639-8937](tel:212-639-8937)

Office Phone

Members

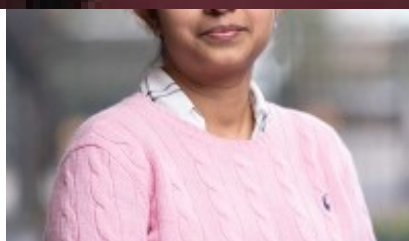
Lab

Alumni



Masako Tamada

Senior Research Scientist



Bhaswati Bhattacharya

Research Fellow

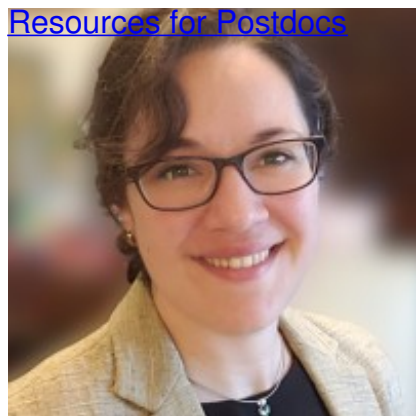
Lab Affiliations

Open Positions

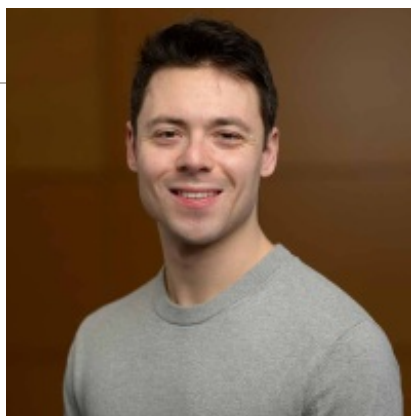
To learn more about available

postdoctoral opportunities, please visit our [Career Center](#)

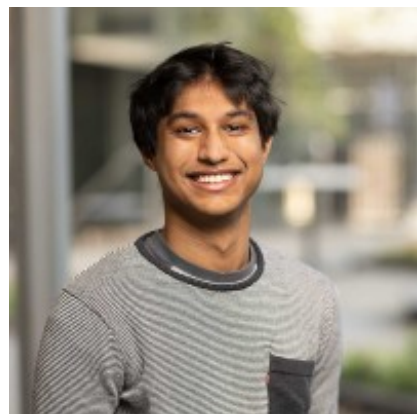
To learn more about compensation and benefits for postdoctoral researchers at MSK, please visit



Meg Distini
Administrative Assistant



Corey Elowsky
Computer Analyst
Difei Jiang
Research Technician



Kazi Hossain
Research Technician



Claire Looney
Research Technician I



Meriel McGovern
Research Technician



Lila Neahring
Postdoctoral Research Fellow

[now \(https://www.sloankettering.edu/research-areas/labs/jennifer-zallen/career-opportunities\)](https://www.sloankettering.edu/research-areas/labs/jennifer-zallen/career-opportunities)

Get in Touch

✉ zallenj@mskcc.org

Lab Head Email

☎ [212-639-8937](tel:212-639-8937)



Carlos Patiño Descovich
Research Fellow



Ian Prudhomme
Research Technician



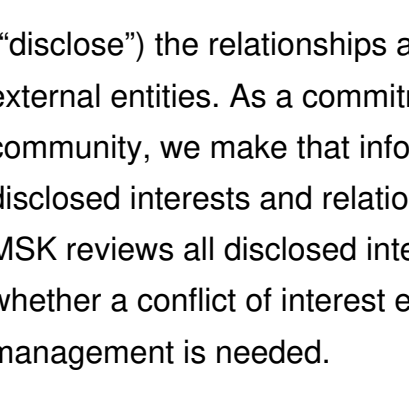
Nathan Shugarts
Devanapally
Research Fellow



Nilay Taneja
Research Fellow




Hannah Ulman
Computer Analyst I



Carolyn Ton
Weill Cornell Graduate Student

Office Phone

 [212-639-2784](tel:212-639-2784)

Lab Phone

Disclosures

Members of the MSK Community often work with pharmaceutical, device, biotechnology, and life sciences companies, and other organizations outside of MSK, to find safe and effective cancer treatments, to improve patient care, and to educate the health care community. These activities outside of MSK further our mission, provide productive collaborations, and promote the practical application of scientific discoveries.

MSK requires doctors, faculty members, and leaders to report (“disclose”) the relationships and financial interests they have with external entities. As a commitment to transparency with our community, we make that information available to the public. Not all disclosed interests and relationships present conflicts of interest. MSK reviews all disclosed interests and relationships to assess whether a conflict of interest exists and whether formal COI management is needed.

Jennifer A. Zallen discloses the following relationships and financial interests:

No disclosures meeting criteria for time period

The information published here is a complement to other publicly reported data and is for a specific annual disclosure period. There may be differences between information on this and other public

sites as a result of different reporting periods and/or the various ways relationships and financial interests are categorized by organizations that publish such data.

This page and data include information for a specific MSK annual disclosure period (January 1, 2024 through disclosure submission in spring 2025). This data reflects interests that may or may not still exist. This data is updated annually.

Learn more about MSK's COI policies [here](#) . For questions regarding MSK's COI-related policies and procedures, email MSK's Compliance Office at ecoi@mskcc.org .

[View all disclosures \(https://www.sloankettering.edu/disclosures\)](https://www.sloankettering.edu/disclosures)

© 2025 Louis V. Gerstner Jr. Graduate School of Biomedical Sciences Memorial Sloan Kettering Cancer Center