

Ready to start planning your care? Call us at [646-926-0945](tel:646-926-0945) to make an appointment.

×



Memorial Sloan Kettering
Cancer Center

[About Us](#)
[Sloan Kettering Institute](#)

[The Jennifer Allen Lab](#)
[Research](#)

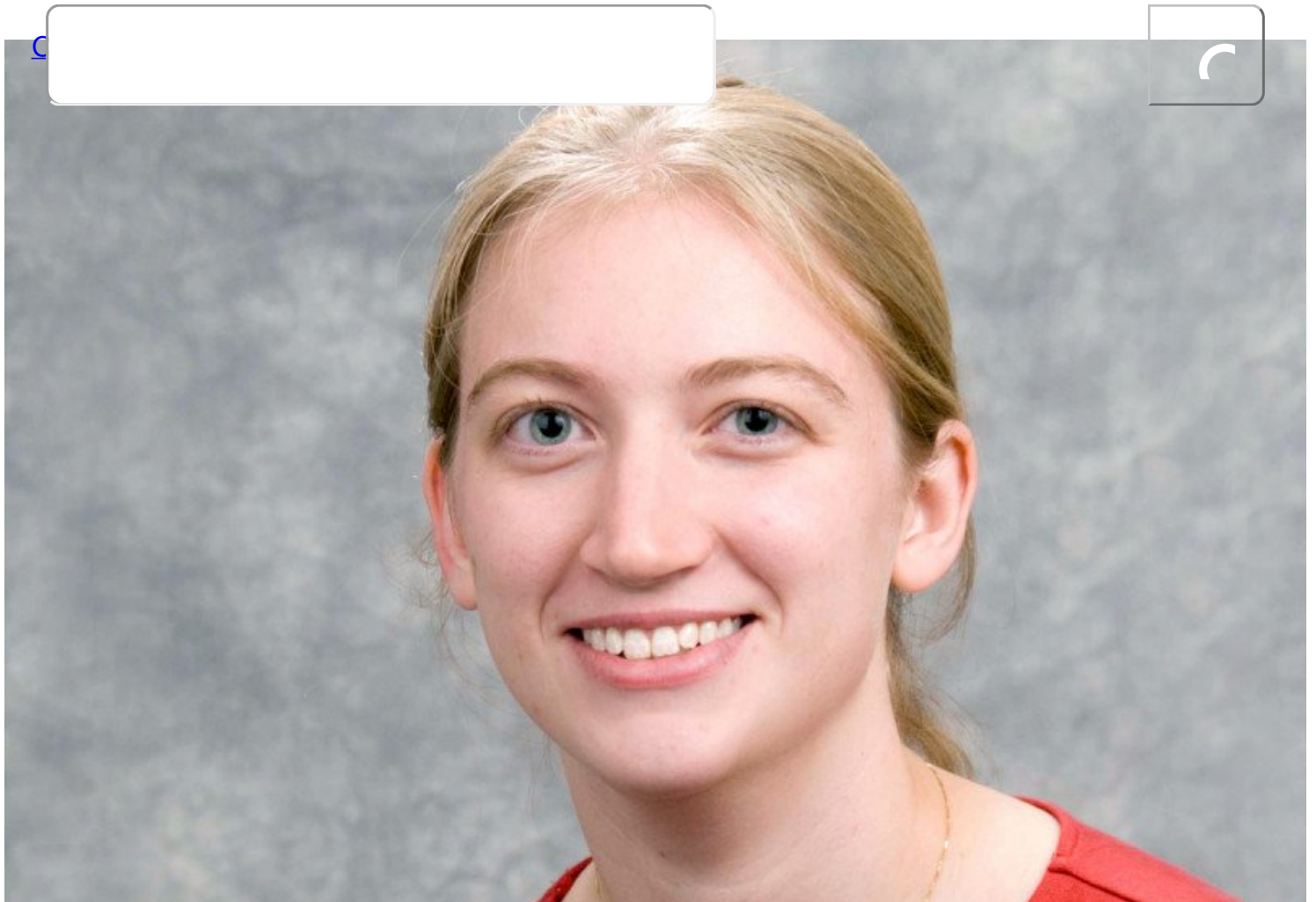


×

[Courses & Training](#)
Alison K. Spencer, PhD
What can we help you find today?

Founder and CEO, Patchwork Analytics

[News & Events](#)
Search



Lab Phone
212-639-2784

Email
spencera@sloankettering.edu

Dissertation
[Scaling of cytoskeletal organization with cell size in Drosophila \(2017\)](#)

Mentor
[Jennifer A. Zallen, PhD](#)

End Year
2017

Education
University of Rochester

Fellowships

Grayer Fellowship (2011-2012)

Publications

[Spencer AK, Schaumberg AJ, Zallen JA. \(2017\) Scaling of cytoskeletal organization with cell size in Drosophila. *Mol Biol Cell*. pii: mbc.E16-10-0691. \[Epub ahead of print\]](#)

[Akkari L, Gocheva V, Quick ML, Kester JC, Spencer AK, Garfall AL, Bowman RL, Joyce JA. \(2016\) Combined deletion of cathepsin protease family members reveals compensatory mechanisms in cancer. *Genes Dev.*, 30, 220-32. PMID: PMC4719311.](#)

[View a full listing of Alison K. Spencer's journal articles.](#)

© 2026 Memorial Sloan Kettering Cancer Center