

Ready to start planning your care? Call us at [646-926-0945](tel:646-926-0945) to make an appointment.

×



Memorial Sloan Kettering
Cancer Center

[About Us](#)

[Sloan Kettering Institute](#)

STRUCTURAL BIOLOGY PROGRAM

[Research](#)

Search 

The Jonathan Goldberg Lab

×

[Education & Training](#)

What can we help you find today?
Research

[News & Events](#)

Search

C



Jonathan Goldberg, PhD
Stephen and Barbara Friedman Chair

Our research group studies the mechanisms of protein trafficking and quality control at the endoplasmic reticulum (ER) in mammalian cells. A major focus of research is on the COPII protein machinery responsible for synthesis of ER-derived transport vesicles. We are exploring the mechanisms utilized by COPII to segregate folded protein cargo from unfolded forms and ER chaperones. We are exploring the coordination of this process with quality control systems that evaluate the folded state. A second focus of research is the cellular response to ER proteotoxicity arising in neurodegenerative disorders such as Parkinson's disease, in cancer, and in insulin

resistance. We are studying the protective cellular pathways that detect and clear toxic misfolded proteins via ER and post-ER degradative routes.



Publications Highlights

[Ma W, Goldberg E, Goldberg J. ER retention is imposed by COPII protein sorting and attenuated by 4-phenylbutyrate. *Elife*. 2017, 6:e26624.](#)

[Ma W, Goldberg J. TANGO1/cTAGE5 receptor as a polyvalent template for assembly of large COPII coats. *Proc Natl Acad Sci USA*. 2016, 113: 10061-10066.](#)

[Ma W, Goldberg, J. Rules for the recognition of dilysine retrieval motifs by coatomer. *EMBO J*. 2013, 32: 926-937.](#)

[View All Publications](#)

People



Jonathan Goldberg, PhD

Stephen and Barbara Friedman Chair

- The Goldberg laboratory focuses on structural and biochemical characterization of intracellular vesicle transport.
- PhD, Imperial College (London)

✉ jonathan@ximpact4.ski.mskcc.org

Email Address

☎ [212-639-6712](tel:212-639-6712)

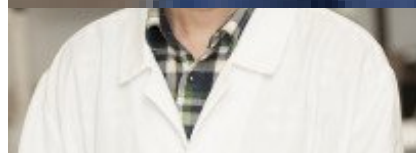
Office Phone

Members

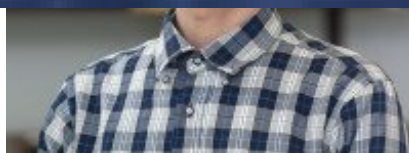
Lab

Alumni

Lab Affiliations



Guoqi Niu



Shun Zhao

Open Positions



Jonathan Goldberg
Member

Research Fellow



Chen Li
Research Assistant

To learn more about available postdoctoral opportunities, please visit our [Career Center](#)

To learn more about compensation and benefits for postdoctoral researchers at MSK, please visit [Resources for Postdocs](#)



Wenfu MA
Research Associate



Denise Ramirez
Administrative Assistant

Get in Touch

✉ jonathan@ximpact4.ski.mskcc.org

Lab Head Email

☎ [212-639-6712](tel:212-639-6712)

Office Phone

☎ [212-639-6713](tel:212-639-6713)

Lab Phone

☎ [212-717-3135](tel:212-717-3135)

Lab Fax

Disclosures

Members of the MSK Community often work with pharmaceutical, device, biotechnology, and life sciences companies, and other organizations outside of MSK, to find safe and effective cancer treatments, to improve patient care, and to educate the health care community. These activities outside of MSK further our mission, provide productive collaborations, and promote the practical application of scientific discoveries.

MSK requires doctors, faculty members, and leaders to report (“disclose”) the relationships and financial interests they have with external entities. As a commitment to transparency with our community, we make that information available to the public. Not all disclosed interests and relationships present conflicts of interest. MSK reviews all disclosed interests and relationships to assess whether a conflict of interest exists and whether formal COI management is needed.

Jonathan Goldberg discloses the following relationships and financial interests:

- Intellia

Equity

The information published here is a complement to other publicly reported data and is for a specific annual disclosure period. There may be differences between information on this and other public sites as a result of different reporting periods and/or the various ways relationships and financial interests are categorized by organizations that publish such data.

This page and data include information for a specific MSK annual disclosure period (January 1, 2024 through disclosure submission in spring 2025). This data reflects interests that may or may not still exist. This data is updated annually.

Learn more about MSK's COI policies [here](#) . For questions regarding MSK's COI-related policies and procedures, email MSK's Compliance Office at ecoi@mskcc.org .

[View all disclosures \(https://www.mskcc.org/disclosures\)](https://www.mskcc.org/disclosures)

© 2026 Memorial Sloan Kettering Cancer Center