

Ready to start planning your care? Call us at [646-926-0945](tel:646-926-0945) to make an appointment.

×



Memorial Sloan Kettering
Cancer Center

[Make an Appointment](#)

[Back](#)

IMMUNO-ONCOLOGY PROGRAM

[About Us](#) [Clinical Trials](#) [Research](#) [Treatment](#)

[About Cancer & Treatment](#)

The Katharine Hsu Lab

What can we help you find today?

ABOUT US

[Our mission, vision & core values](#)

[Leadership](#)

[History](#)

[Inclusion & belonging](#)

[Annual report](#)

[Give to MSK](#)

FOR THE MEDIA



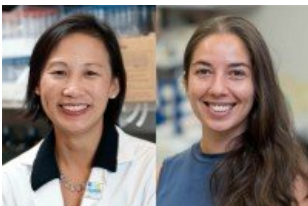
Katharine C. Hsu, MD, PhD

Attending Physician; Member; Director, Tri-Institutional MD-PhD Program

My laboratory studies the natural killer (NK) cell and the molecules that control its ability to recognize and kill cancer and virally infected cells. Improved understanding of how NK cells behave is critical to advancing our ability to harness their innate capacity for tumor recognition and eradication. Therefore, an important component of my research focuses on the basic biology of the NK cell, identifying the molecules involved in controlling NK reactivity, and determining the laboratory and clinical conditions under which NK activity can be modified.

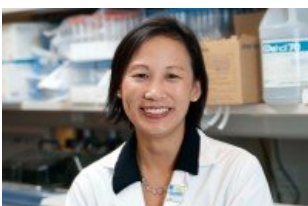


Featured News



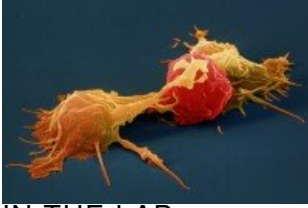
[Unusual Immune Cell Type Could Be Good Target for Immunotherapy](#)

Part natural killer, part T cell, this hybrid immune cell has a “double sword” for fighting cancer.



[Dr. Katharine Hsu Named Director of Tri-Institutional M.D.-Ph.D. Program](#)

In her new role, Dr. Hsu will work to diversify matriculating classes and train students to become skilled leaders as both clinicians and biomedical researchers.



IN THE LAB

[Study Suggests Refined Donor Selection Could Improve Outcomes of Bone Marrow Transplantation in Leukemia](#)

In the future, more-advanced genetic testing might offer better ways to match up patients who need a bone marrow transplant with potential donors.

Publications Highlights

[Hasan AN, Doubrovina E, Sottile R, Prockop S, Klatt MG, Heller G, Selvakumar A, Barnett L, Hsu KC, O'Reilly RJ. Dominant epitopes presented by prevalent HLA alleles permit wide use of banked CMVpp65 T-cells in adoptive therapy. Blood Adv. 2022 May 23:bloodadvances.2022007005. doi: 10.1182/bloodadvances.2022007005. Epub ahead of print.](#)

[Petersdorf EW, McKallor C, Malkki M, He M, Spellman S, Hsu KC, Strong R, Gooley TA, Stevenson PA. Role of NKG2D Ligands and Receptor in Haploidentical Related Donor Hematopoietic Cell Transplantation. Blood Adv. 2023 Feb 10:bloodadvances.2022008922. doi: 10.1182/bloodadvances.2022008922. Epub ahead of print.](#)

[van der Ploeg K, Sottile R, Kontopoulos T, Shaffer BC, Papanicolaou GA, Maloy MA, Cho C, Robinson KS, Perales MA, Le Luduec JB, Hsu KC. Emergence of human CMV-induced NKG2C+ NK cells is associated with CD8+ T-cell recovery after allogeneic HCT. Blood Adv. 2023 Oct 10;7\(19\):5784-5798. doi: 10.1182/bloodadvances.2022008952. PMID: PMC10561005.](#)

[Shahid S, Ceglia N, Le Luduec JB, McPherson A, Spitzer B, Kontopoulos T, Bojilova V, Panjwani MK, Roshal M, Shah SP, Abdel-Wahab O, Greenbaum B, Hsu KC. Immune](#)

[profiling after allogeneic hematopoietic cell transplantation in pediatric acute myeloid leukemia. Blood Adv. 2023 Sep 12;7\(17\):5069-5081. doi: 10.1182/bloodadvances.2022009468. PMID: PMC10471937.](#)

[Santosa EK, Kim H, Rückert T, Le Ludec JB, Abbasi AJ, Wingert CK, Peters L, Frost JN, Hsu KC, Romagnani C, Sun JC. Control of nutrient uptake by IRF4 orchestrates innate immune memory. Nat Immunol. 2023 Oct;24\(10\):1685-1697. doi: 10.1038/s41590-023-01620-z. Epub 2023 Sep 11.](#)

[View All Publications](#)

People



Katharine C. Hsu, MD, PhD

Attending Physician; Member; Director, Tri-Institutional MD-PhD Program

- Physician-scientist Katharine Hsu studies the biology of human natural killer cells and how they contribute to disease processes.
- MD, PhD, Cornell University Medical College

✉ hsuk@mskcc.org

Email Address

☎ [646-888-2667](tel:646-888-2667)

Office Phone

🔗 [View physician profile](#)

Physician profile

Members



Jean-Benoit Le Luduec

Scientific Research Lead

postdoctoral opportunities, please visit our [Career Center](#)



Mohammed Kazim Panjwani

Research Fellow

Lab

Alumni

Lab Affiliations

Open Positions

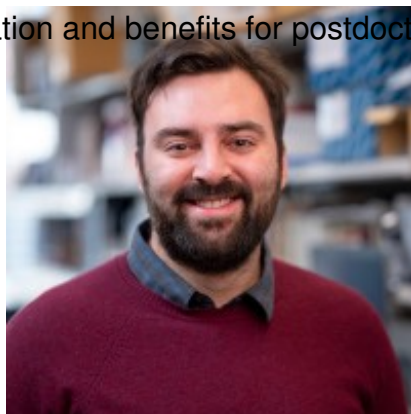
To learn more about available

To learn more about compensation and benefits for postdoctoral researchers at MSK, please visit

[Resources for Postdocs](#)



Hongtao Liu
Research Tech



Gianluca Scarno
Research Scholar

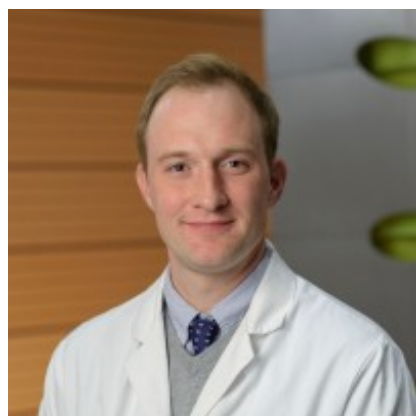
Get in Touch

✉ hsuk@mskcc.org

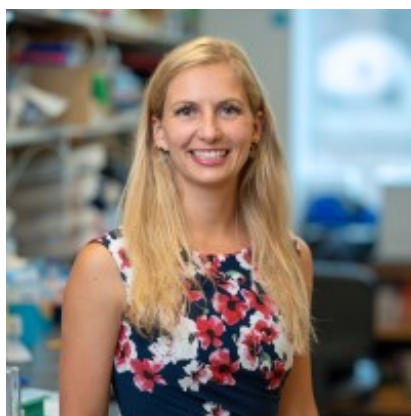
Lab Head Email

☎ [646-888-2667](tel:646-888-2667)

Office Phone



Brian Shaffer
Assistant Attending



Katja Srpan
Research Scholar

Disclosures

Members of the MSK Community often work with pharmaceutical, device, biotechnology, and life sciences companies, and other organizations outside of MSK, to find safe and effective cancer treatments, to improve patient care, and to educate the health care community.

These activities outside of MSK further our mission, provide productive collaborations, and promote the practical application of scientific discoveries.

MSK requires doctors, faculty members, and leaders to report (“disclose”) the relationships and financial interests they have with external entities. As a commitment to transparency with our community, we make that information available to the public. Not all disclosed interests and relationships present conflicts of interest. MSK reviews all disclosed interests and relationships to assess whether a conflict of interest exists and whether formal COI management is needed.

Katharine C. Hsu discloses the following relationships and financial interests:

- Wugen, Inc.
Professional Services and Activities

The information published here is a complement to other publicly reported data and is for a specific annual disclosure period. There may be differences between information on this and other public sites as a result of different reporting periods and/or the various ways relationships and financial interests are categorized by organizations that publish such data.

This page and data include information for a specific MSK annual disclosure period (January 1, 2024 through disclosure submission in spring 2025). This data reflects interests that may or may not still exist. This data is updated annually.

Learn more about MSK's COI policies [here](#) . For questions regarding MSK's COI-related policies and procedures, email MSK's Compliance Office at ecoi@mskcc.org .

[View all disclosures \(https://www.mskcc.org/disclosures\)](https://www.mskcc.org/disclosures)

© 2026 Memorial Sloan Kettering Cancer Center