

Ready to start planning your care? Call us at [646-926-0945](tel:646-926-0945) to make an appointment.

×



Memorial Sloan Kettering
Cancer Center

[Make an Appointment](#)

[Back](#)

MEMORIAL HOSPITAL RESEARCH LABORATORIES

[About Us](#) [Physicians](#) [Cancer & Treatment](#)

[About Cancer & Treatment](#)

The Kenneth Offit Lab

What can we help you find today?

ABOUT US

[Our mission, vision & core values](#)

[Leadership](#)

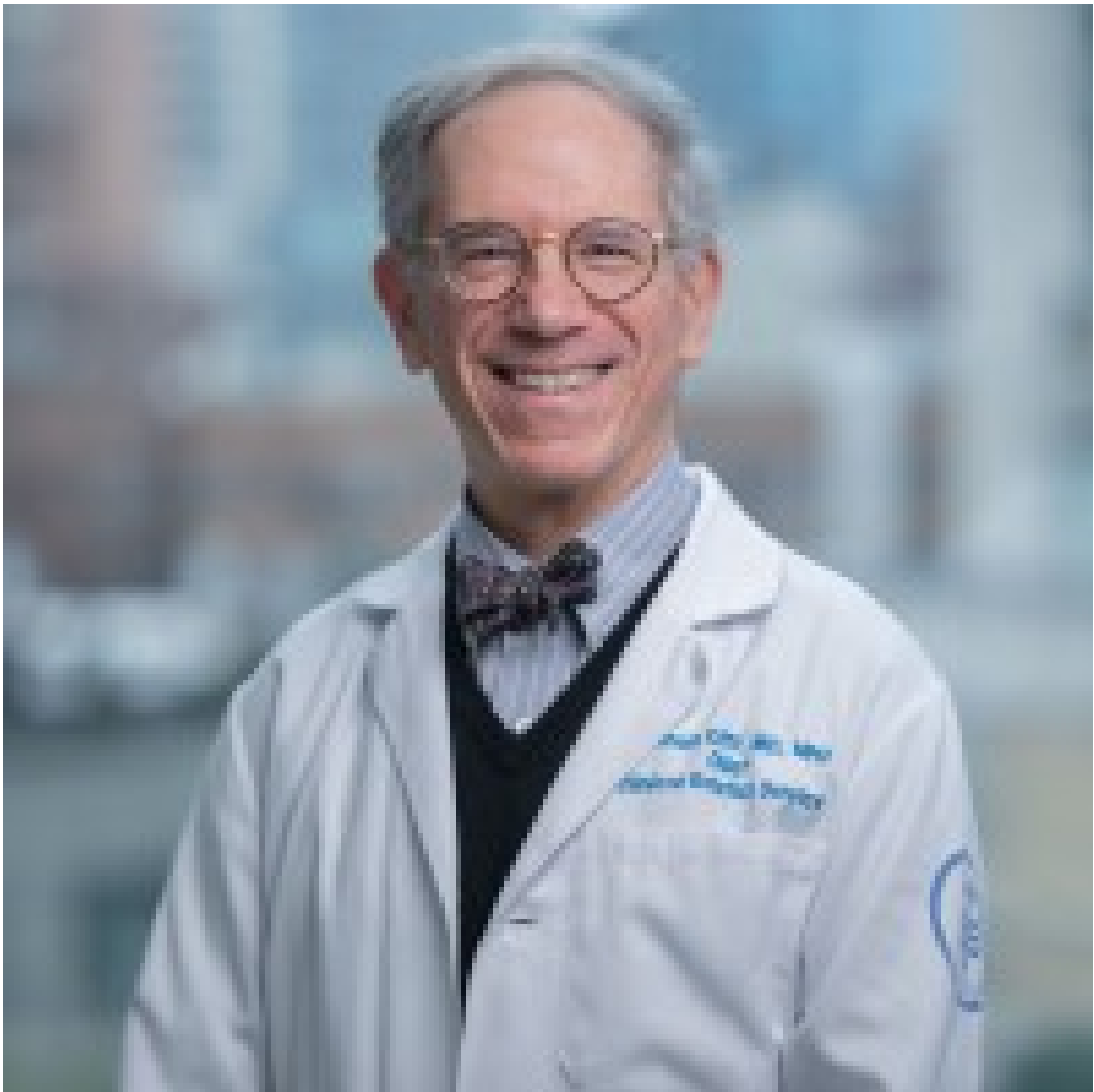
[History](#)

[Inclusion & belonging](#)

[Annual report](#)

[Give to MSK](#)

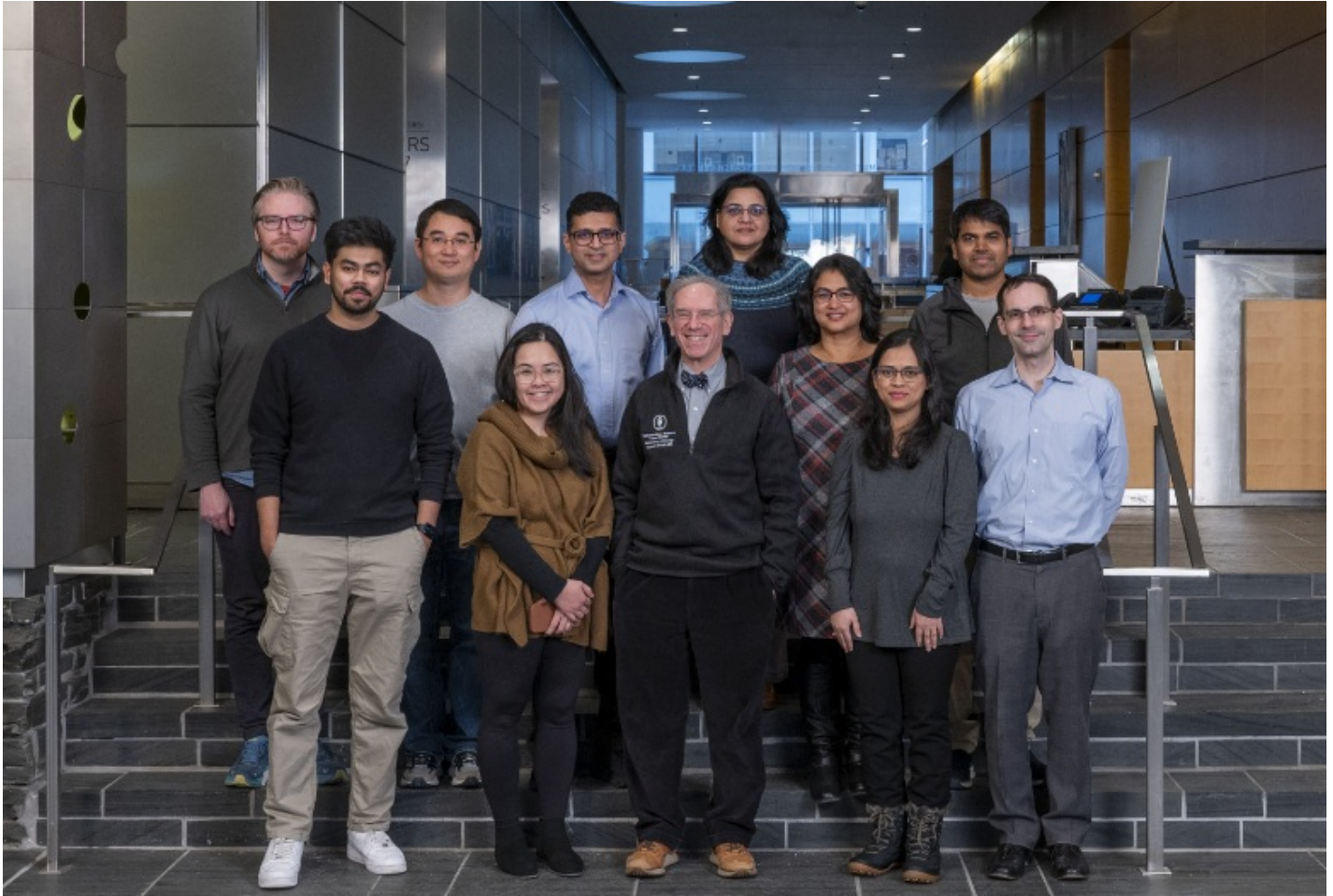
FOR THE MEDIA



Kenneth Offit, MD

Robert and Kate Niehaus Chair in Inherited Cancer Genomics; Vice Chair, Academic Affairs,
Department of Medicine

Research in the laboratory focuses on the discovery and characterization of novel cancer predisposing genes in humans, including both common and rare variants. We conduct studies to describe phenotype, penetrance, modifying effect, and clinical outcomes associated with germline genetic alterations in cancer patients and their families. In addition, our research focuses on the interpretation and clinical translation of results of massively parallel sequencing of germline genomes in cancer-prone kindreds.



Featured News

[Meet the 2025-2026 Andrew Sabin Family Foundation Fellows](#)



FINDING

[Repairing DNA Damage in Cancer Cells](#)

New findings could lead to a different kind of cancer drug that targets a DNA damage repair pathway called nucleotide excision repair.



IN THE CLINIC

[Innovative Research Center Will Explore Hereditary Cancer Genes](#)

MSK's new Robert and Kate Niehaus Center for Inherited Cancer Genomics is using the latest in gene sequencing technologies to discover the inherited causes of cancer.

[View All Featured News](#)

Publications Highlights

[Wei X, Calvo-Vidal MN, Chen S, Wu G, Revuelta MV, Sun J, Zhang J, Walsh MF, Nichols KE, Joseph V, Snyder C, Vachon CM, McKay JD, Wang SP, Jayabalan DS, Jacobs LM, Becirovic D, Waller RG, Artomov M, Viale A, Patel J, Phillip J, Chen-Kiang S, Curtin K, Salama M, Atanackovic D, Niesvizky R, Landgren O, Slager SL, Godley LA, Churpek J, Garber JE, Anderson KC, Daly MJ, Roeder RG, Dumontet C, Lynch HT, Mullighan CG, Camp NJ, Offit K, Klein RJ, Yu H, Cerchiatti L, Lipkin SM. Germline Lysine-Specific Demethylase 1 \(*LSD1/KDM1A*\) Mutations Confer Susceptibility to Multiple Myeloma. *Cancer Res.* 2018 May 15;78\(10\):2747-2759.](#)

[Katona BW, Yurgelun MB, Garber JE, Offit K, Domchek SM, Robson ME, Stadler ZK. A counseling framework for moderate-penetrance colorectal cancer susceptibility genes. *Genet Med.* 2018 Mar 1.](#)

[Walsh MF, Kennedy J, Harlan M, Kentsis A, Shukla N, Musinsky J, Roberts S, Kung AL, Robson M, Kushner BH, Meyers P, Offit K. Germline *BRCA2* mutations detected in pediatric sequencing studies impact parents' evaluation and care. *Cold Spring Harb Mol Case Stud.* 2017 Nov 21;3\(6\).](#)

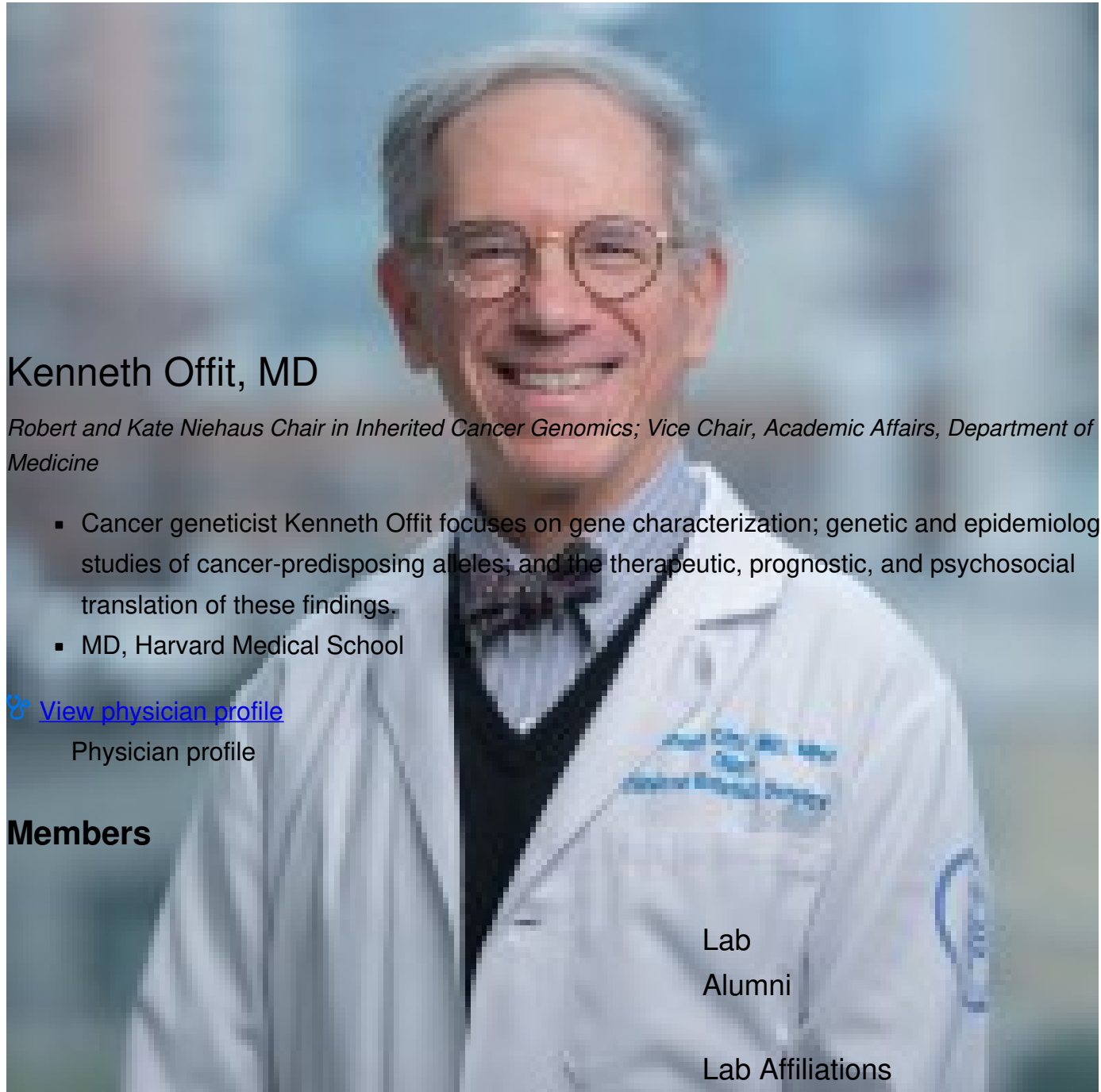
[Mandelker D, Zhang L, Kemel Y, Stadler ZK, Joseph V, Zehir A, Pradhan N, Arnold A, Walsh MF, Li Y, Balakrishnan AR, Syed A, Prasad M, Nafa K, Carlo MI, Cadoo KA, Sheehan M, Fleischut MH, Salo-Mullen E, Trottier M, Lipkin SM, Lincoln A, Mukherjee S,](#)

[Ravichandran V, Cambria R, Galle J, Abida W, Arcila ME, Benayed R, Shah R, Yu K, Bajorin DF, Coleman JA, Leach SD, Lowery MA, Garcia-Aguilar J, Kantoff PW, Sawyers CL, Dickler MN, Saltz L, Motzer RJ, O'Reilly EM, Scher HI, Baselga J, Klimstra DS, Solit DB, Hyman DM, Berger MF, Ladanyi M, Robson ME, Offit K. Mutation Detection in Patients With Advanced Cancer by Universal Sequencing of Cancer-Related Genes in Tumor and Normal DNA vs Guideline-Based Germline Testing. *JAMA*. 2017 Sep 5;318\(9\):825-835. Doi: 10.1001/jama.2017.11137](#)

[Hamilton JG, Shuk E, Genoff MC, Rodríguez VM, Hay JL, Offit K, Robson ME. Interest and Attitudes of Patients With Advanced Cancer With Regard to Secondary Germline Findings From Tumor Genomic Profiling. *J Oncol Pract*. 2017 Jul;13\(7\):e590-e601.](#)

[View All Publications](#)

People



Kenneth Offit, MD

Robert and Kate Niehaus Chair in Inherited Cancer Genomics; Vice Chair, Academic Affairs, Department of Medicine

- Cancer geneticist Kenneth Offit focuses on gene characterization; genetic and epidemiologic studies of cancer-predisposing alleles; and the therapeutic, prognostic, and psychosocial translation of these findings.
- MD, Harvard Medical School

[View physician profile](#)

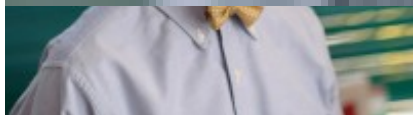
Physician profile

Members

Lab

Alumni

Lab Affiliations



Kenneth Offit

Lab Head; Robert and Kate Niehaus Chair in Inherited Cancer Genomics



Vijai Joseph

Associate Attending Geneticist; Director of Bioinformatics, Niehaus Center

Open Positions

To learn more about available postdoctoral opportunities, please visit our [Career Center](#)

To learn more about compensation and benefits for postdoctoral researchers at MSK, please visit [Resources for Postdocs](#)



Mark E. Robson
Chief, Breast Medicine Service;
Lead, Inherited Breast Cancer
Genomics, Niehaus Center

Sanchari Bhattacharyya



Zsofia K. Stadler
Lead, Inherited Gastrointestinal
Cancer Genomics; Director of
Translational Research, Robert
and Kate Niehaus Center for
Inherited Cancer Genomics



Maria Carlo
Lead, Inherited Genitourinary
Cancer Genomics, Niehaus
Center

Catherine Fanjoy



Jonathan Amsalem
Bioinformatics Specialist

[Apply](#)



Julia Gruberg
Research Project Manager

[now \(https://www.mskcc.org/research-areas/labs/kenneth-offit/bioinformatics-specialist\)](https://www.mskcc.org/research-areas/labs/kenneth-offit/bioinformatics-specialist)

Career Opportunities

[Apply](#)

[now \(https://www.mskcc.org/research-areas/labs/kenneth-offit/career-](https://www.mskcc.org/research-areas/labs/kenneth-offit/career-opportunities)

[opportunities\)](#)

Computational Genetics Fellow



Yelena Kemel
Niehaus Center Program
Manager

Ellen Kim



Ying Liu
Assistant Attending Physician;
Lead, Inherited Gynecological
Cancer Genomics, Niehaus
Center

[Apply](#)



Andrew Marderstein
Senior Computational Biologist,
Niehaus Center



Semanti Mukherjee
Associate Attending Geneticist;
Director of Bioinformatics,
Niehaus Center



Shiv Prakash Verma

Mitul Waghmare

[now \(https://www.mskcc.org/research-areas/labs/kenneth-offit/computational-genetics-fellow\)](https://www.mskcc.org/research-areas/labs/kenneth-offit/computational-genetics-fellow)

[View All Open Positions](#)

Disclosures

Members of the MSK Community often work with pharmaceutical, device, biotechnology, and life sciences companies, and other organizations outside of MSK, to find safe and effective cancer treatments, to improve patient care, and to educate the health care community. These activities outside of MSK further our mission, provide productive collaborations, and promote the practical application of scientific discoveries.

MSK requires doctors, faculty members, and leaders to report (“disclose”) the relationships and financial interests they have with external entities. As a commitment to transparency with our community, we make that information available to the public. Not all disclosed interests and relationships present conflicts of interest. MSK reviews all disclosed interests and relationships to assess whether a conflict of interest exists and whether formal COI management is needed.

Kenneth Offit discloses the following relationships and financial interests:

No disclosures meeting criteria for time period

The information published here is a complement to other publicly reported data and is for a specific annual disclosure period. There may be differences between information on this and other public sites as a result of different reporting periods and/or the various ways relationships and financial interests are categorized by organizations that publish such data.

This page and data include information for a specific MSK annual disclosure period (January 1, 2024 through disclosure submission in spring 2025). This data reflects interests that may or may not still exist. This data is updated annually.

Learn more about MSK’s COI policies [here](#) . For questions regarding MSK’s COI-related policies and procedures, email MSK’s Compliance Office at ecoi@mskcc.org .

[View all disclosures \(https://www.mskcc.org/disclosures\)](https://www.mskcc.org/disclosures)

© 2026 Memorial Sloan Kettering Cancer Center