

Ready to start planning your care? Call us at [800-525-2225](tel:800-525-2225) to make an appointment.

×



Memorial Sloan Kettering  
Cancer Center

[About Us](#)  
[Sloan Kettering Institute](#)

CELL BIOLOGY PROGRAM

[Research](#)

## The Marilyn Resh Lab

[Education & Training](#)

[Cell Biology Program](#)  
[News & Events](#)

**Research**  
[Open Positions](#)



Marilyn Resh, PhD  
Member

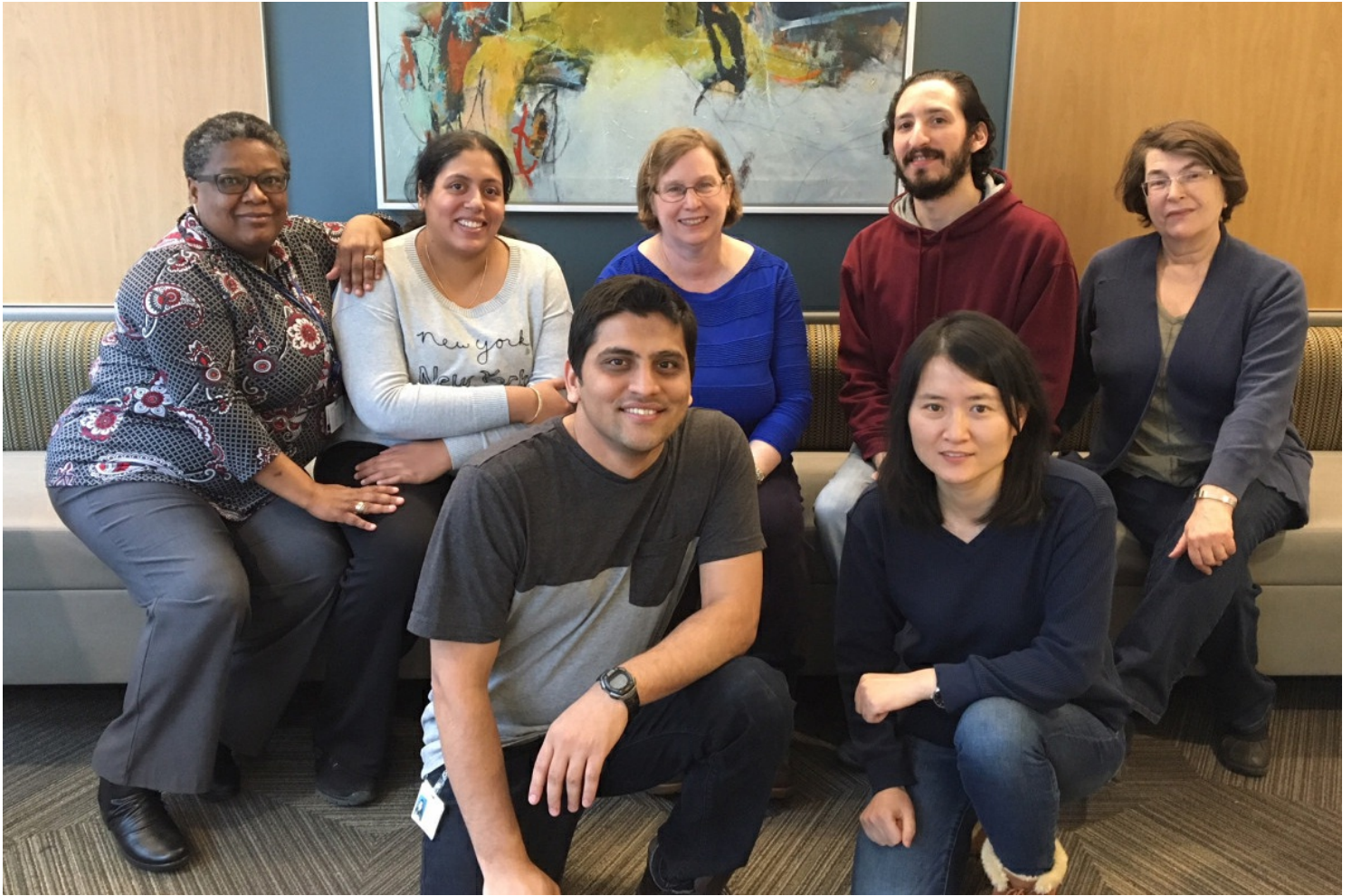
---

The goal of my laboratory's research is to understand how fatty acylation influences the structure and function of membrane-bound and secreted signaling proteins. Our focus is on the Src family tyrosine protein kinases, Hedgehog and Wnt proteins.

[View Lab Overview](#) →

## Research Projects

[Fatty Acylation of Wnt Proteins by Porcupine](#)



## Publications Highlights

[Petrova E, Rios-Esteves J, Querfelli O, Glickman JF, Resh MD. Inhibitors of Hedgehog acyltransferase block Sonic Hedgehog signaling. Nat Chem Biol. 2013 Apr;9\(4\):247-9. doi: 10.1038/nchembio.1184. Epub 2013 Feb 17.](#)

[Resh MD. Targeting protein lipidation in disease. Trends Mol Med. 2012 Apr;18\(4\):206-14. doi: 10.1016/j.molmed.2012.01.007. Epub 2012 Feb 17.](#)

[Buglino JA, Resh MD. Hhat is a palmitoylacyltransferase with specificity for N-palmitoylation of Sonic Hedgehog. J Biol Chem. 2008 Aug 8;283\(32\):22076-88. doi: 10.1074/jbc.M803901200. Epub 2008 Jun 4.](#)

[Resh MD. Palmitoylation of ligands, receptors, and intracellular signaling molecules. Sci STKE. 2006 Oct 31;2006\(359\):re14.](#)

[View All Publications](#)

## People

### Marilyn Resh, PhD

*Member*

Cell biologist Marilyn Resh investigates the regulation of protein function by fatty acylation, and the development of Hedgehog palmitoylation inhibitors to block pancreatic and lung cancer.

PhD, Harvard University

AB, Princeton University

[✉ m-resh@ski.mskcc.org](mailto:m-resh@ski.mskcc.org)

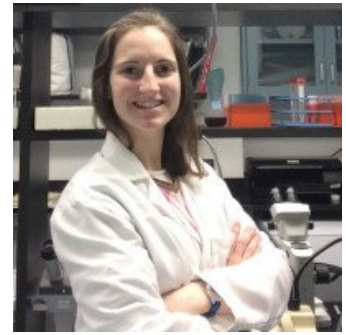
Email Address

[☎ 212-639-2514](tel:212-639-2514)

Office Phone

### Members





Adina R.  
Schonbrun

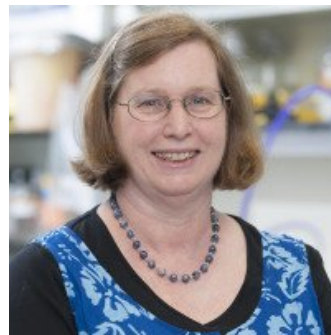
Scientific Editor, Periodt  
Scientific  
Communications/Plant  
Editions - Freelance



Jing Zhou,  
Ph.D.  
Postdoctoral Fellow



Raisa Louft-  
Nisenbaum  
Research Technician



Marilyn Resh  
Member

Lab Alumni  
+

Lab Affiliations  
+

## Achievements

Excellence in Teaching and Mentoring Award, Weill Cornell Graduate School (2009)

Established Scientist, American Heart Association (1994-1999)

Pew Scholar in the Biomedical Sciences, Pew Charitable Trusts (1987-1991)

Discovery of the "two-signal hypothesis" for binding of myristoylated proteins to membranes

Discovery of a myristoyl switch mechanism for membrane binding of HIV-1 Gag

Read more  
+


# Get in Touch

 [m-resh@ski.mskcc.org](mailto:m-resh@ski.mskcc.org)

Lab Head Email

 [212-639-2514](tel:212-639-2514)


Office Phone

 [212-717-3317](tel:212-717-3317)

Office Fax

 [212-639-2551](tel:212-639-2551) / [2552](tel:212-639-2552)

Lab Phone

 [212-717-3317](tel:212-717-3317)

Lab Fax

## ▾ About Us

[Overview](#)

[Leadership](#)

[Administration](#)

[History](#)

[Contact Us](#)



## ▾ Research

[Overview](#)

[Research programs](#)

[Research labs](#)

[Core facilities & resources](#)

## ▾ Education & Training

[Overview](#)

[Postdoctoral training](#)

[Gerstner Sloan Kettering Graduate School](#)

[Joint graduate programs](#)

[Programs for college & high school students](#)

## ▼ News & Events

[Overview](#)

[Seminars & events](#)

## ▼ Open Positions

[Overview](#)

[Faculty positions](#)

[Postdoctoral positions](#)

---

[Communication preferences](#)

[Cookie preferences](#)

[Legal disclaimer](#)

[Accessibility Statement](#)

[Privacy policy](#)

[Public notices](#)

© 2024 Memorial Sloan Kettering Cancer Center