

Ready to start planning your care? Call us at [646-926-0945](tel:646-926-0945) to make an appointment.

×



Memorial Sloan Kettering  
Cancer Center

[About Us](#)  
[Sloan Kettering Institute](#)

[The Meng-Fo Bryan Tsou Lab](#)  
[Research](#)

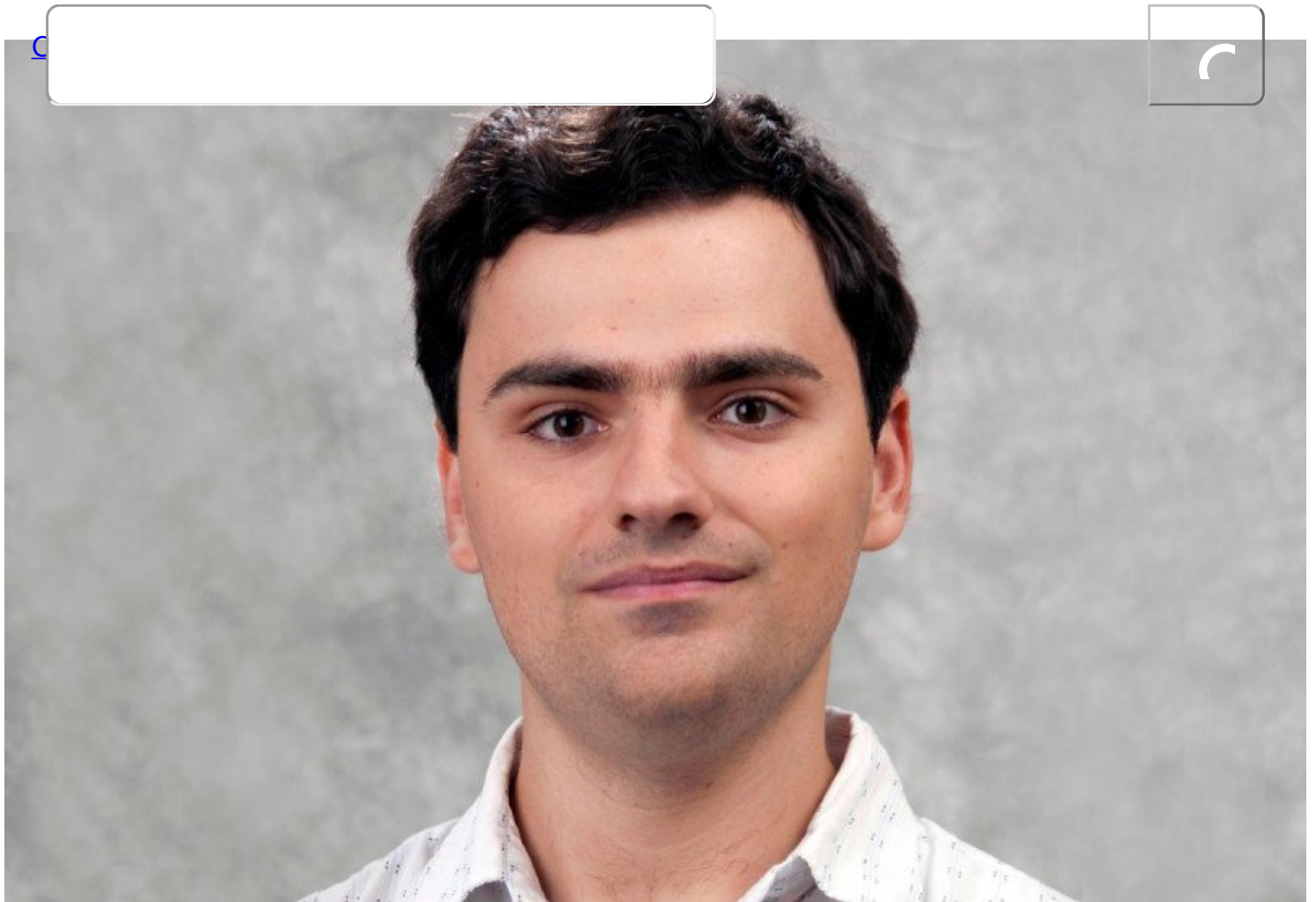


×

[Education & Training](#)  
**Gregory Mazo, PhD**  
What can we help you find today?

Principal Scientist, Graviton Bioscience

[News & Events](#)  
Search



## Email

[mazog@sloankettering.edu](mailto:mazog@sloankettering.edu)

## Dissertation

[The Function of Subdistal Appendages in the Spatial Control of Cilia \(2017\)](#)

## Mentor

[Meng-Fu Bryan Tsou, PhD](#)

## Start Year

2010

## End Year

2018

## Education

Cornell University

## Fellowships

[Geoffrey Beene Graduate Student Fellowship](#) (2011-2012)

## Publications

[Chong WM, Wang WJ, Lo CH, Chiu TY, Chang TJ, Liu YP, Tanos B, Mazo G, Jane WN, Yang TT, Liao JC \(2020\) Super-resolution microscopy reveals coupling between mammalian centriole subdistal appendages and distal appendages. \*Elife\*. pii: e53580. PMID: PMC7173962](#)

[Yang TT, Chong WM, Wang WJ, Mazo G, Tanos B, Chen Z, Tran TMN, Chen YD, Weng RR, Huang CE, Jane WN, Tsou MB, Liao JC \(2018\) Super-resolution architecture of mammalian centriole distal appendages reveals distinct blade and matrix functional components. \*Nat Commun\*. 9, 2023. PMID: PMC5964178](#)

[Mazo G, Soplop N, Wang WJ, Uryu K, Tsou MB.\(2016\) Spatial Control of Primary Ciliogenesis by Subdistal Appendages Alters Sensation-Associated Properties of Cilia. \*Dev Cell\*. 39, 424-437. PMID: PMC5125554 \[Available on 2017-11-21\]](#)

[Fong CS, Mazo G, Das T, Goodman J, Kim M, O'Rourke BP, Izquierdo D, Tsou MF.\(2016\) 53BP1 and USP28 mediate p53-dependent cell cycle arrest in response to centrosome loss and prolonged mitosis. \*Elife\* 5. PMID: PMC4946878](#)

[View a full listing of Gregory Mazo's journal articles.](#)

© 2026 Memorial Sloan Kettering Cancer Center