

Ready to start planning your care? Call us at [646-926-0945](tel:646-926-0945) to make an appointment.

×



Memorial Sloan Kettering
Cancer Center

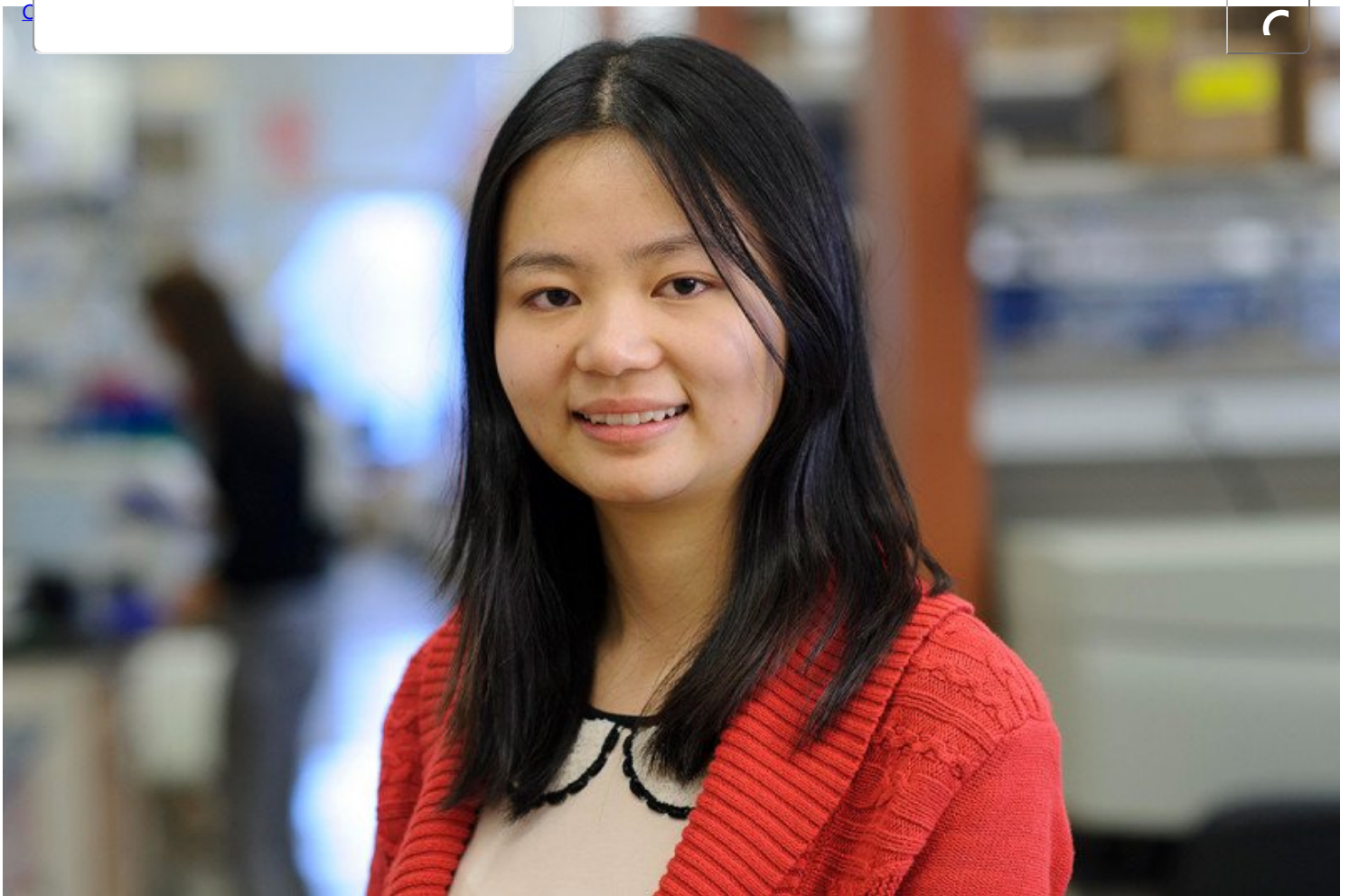
[About Us](#)
[Sloan Kettering Institute](#)

[The Ming Li Lab](#)
[Research](#)

×

Chong Luo, PhD
What can we help you find today?

[Cancer Vaccines Researcher, Moderna](#)
[News & Events](#)
Search



Lab Phone
646-888-2761

Email
luoc@sloankettering.edu

Dissertation
[Transcriptional Control of T Cell Tolerance and Immunity \(2016\)](#)

Mentor

[Ming Li, PhD](#)

Start Year

2010

End Year

2016

Education

Tsinghua University

My research interests involve the tumor microenvironment and cancer immunotherapy. At Gerstner Sloan Kettering, we are a small group. All of the students know each other very well. I like the translational aspect of the curriculum, particularly the first-year clinical visits and the later clinical mentorship. Also, the location in a diverse city like New York is very attractive.

Fellowships

[Palestin Fellowship](#) (2011-2012)

Publications

[Dadi S, Chhangawala S, Whitlock BM, Franklin RA, Luo CT, Oh SA, Toure A, Pritykin Y, Huse M, Leslie CS, Li MO. \(2016\) Cancer Immun-surveillance by Tissue-Resident Innate Lymphoid Cells and Innate-like T Cells. *Cell*, 164, 365-77. PMID: PMC4733424.](#)

[Luo CT, Liao W, Dadi S, Toure A, Li MO. \(2016\) Graded Foxo1 activity in Treg cells differentiates tumour immunity from spontaneous autoimmunity. *Nature*, 529, 532-6.](#)

[Pucella JN, Yen WF, Kim MV, van der Veecken J, Luo CT, Socci ND, Naito Y, Li MO, Iwai N, Chaudhuri J. \(2015\) miR-182 is largely dispensable for adaptive immunity: lack of correlation between expression and function. *J Immunol.*, 2015, 194, 2635-42. PMID: PMC4355037](#)

[Luo C, Li M. \(2013\) Transcriptional control of regulatory T cell development and function. *Trends Immunol.* 34, 531-539.](#)

[Ouyang W, Liao W, Luo C, Yin N, Huse M, Kim M, Peng M, Chan P, Ma Q, Mo Y, Meijer D, Zhao K, Rudensky A, Atwal G, Zhang M, Li M. \(2012\) Novel Foxo1-dependent transcriptional programs control T\(reg\) cell function. *Nature*, 491, 554-559. PMID: PMC3771531.](#)

[View a full listing of Chong Luo's journal articles.](#)

© 2026 Memorial Sloan Kettering Cancer Center