



Gerstner Sloan Kettering
Graduate School of Biomedical Sciences

[Welcome to GSK](#)

[The Minkui Luo Lab](#)

[Admissions](#)

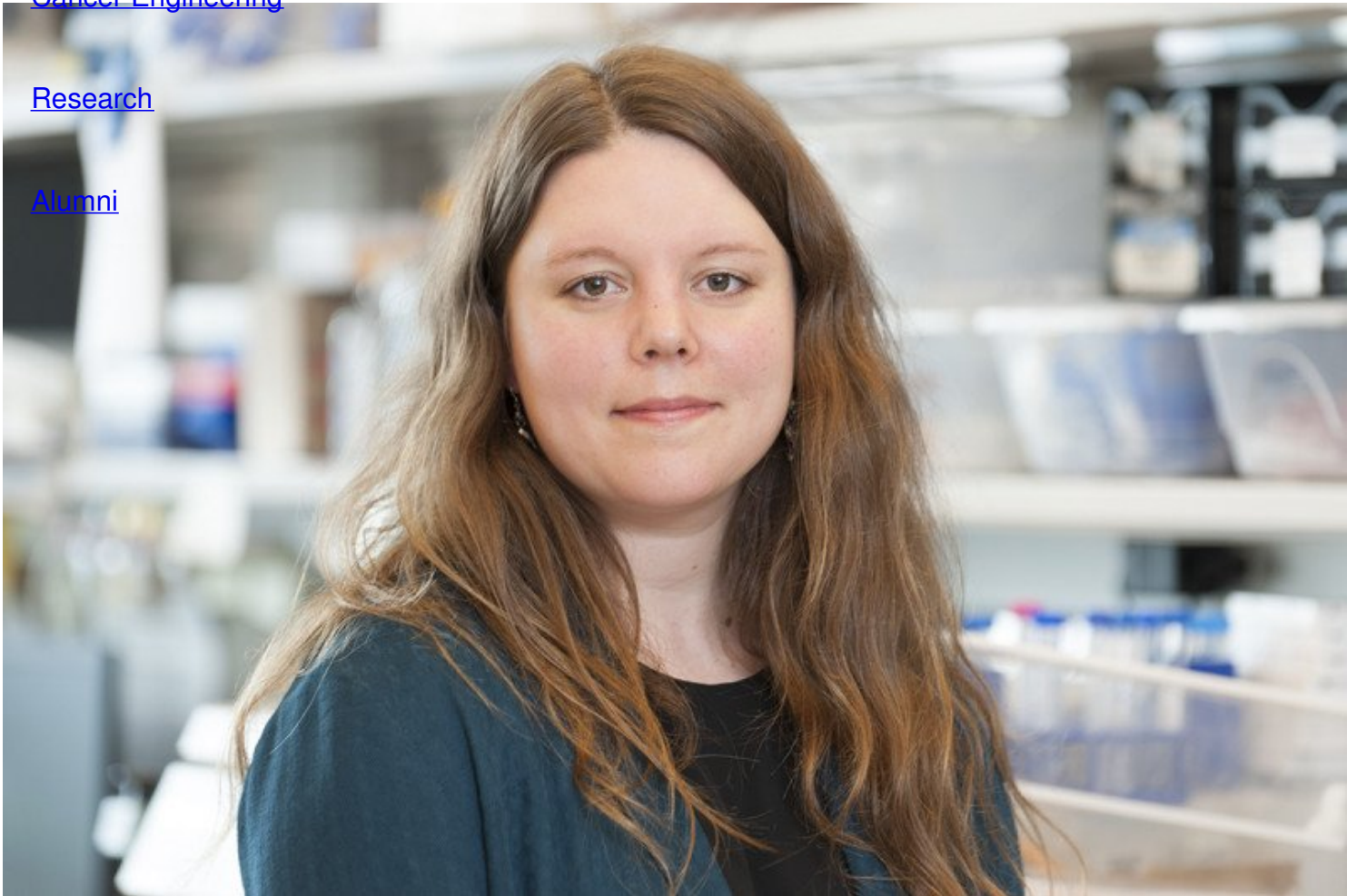
Ryan Blawski, PhD

[Cancer Biology](#)
Former Research Fellow

[Cancer Engineering](#)

[Research](#)

[Alumni](#)



Email

ryb2004@med.cornell.edu

Start Year

2013

End Year

2021

2021-Present: Collaborates with the Luo Lab while working as a Postdoctoral Research Fellow in the laboratory of Dr. Eneda Toska in the Department of Oncology at Johns Hopkins

2020-2021: Research Fellow

2013-2019: Luo Lab Graduate Student Alumni

[Communication preferences](#)

[Cookie preferences](#)

[Legal disclaimer](#)

[Accessibility Statement](#)

[Privacy policy](#)

[Public notices](#)

© 2024 Louis V. Gerstner Jr. Graduate School of Biomedical Sciences Memorial Sloan Kettering Cancer Center