

Ready to start planning your care? Call us at [800-525-2225](tel:800-525-2225) to make an appointment.

×



Memorial Sloan Kettering
Cancer Center

[Make an Appointment](#)

[← Back](#)

MEMORIAL HOSPITAL RESEARCH LABORATORIES

[Patient & Family Resources](#)

[Refer a Patient](#)

Diagnosis and Treatment

The Prasad Adusumilli Lab

ABOUT US

[Our mission, vision & core values](#)

[Leadership](#)

[History](#)

[Equality, diversity & inclusion](#)

[Annual report](#)

[Give to MSK](#)



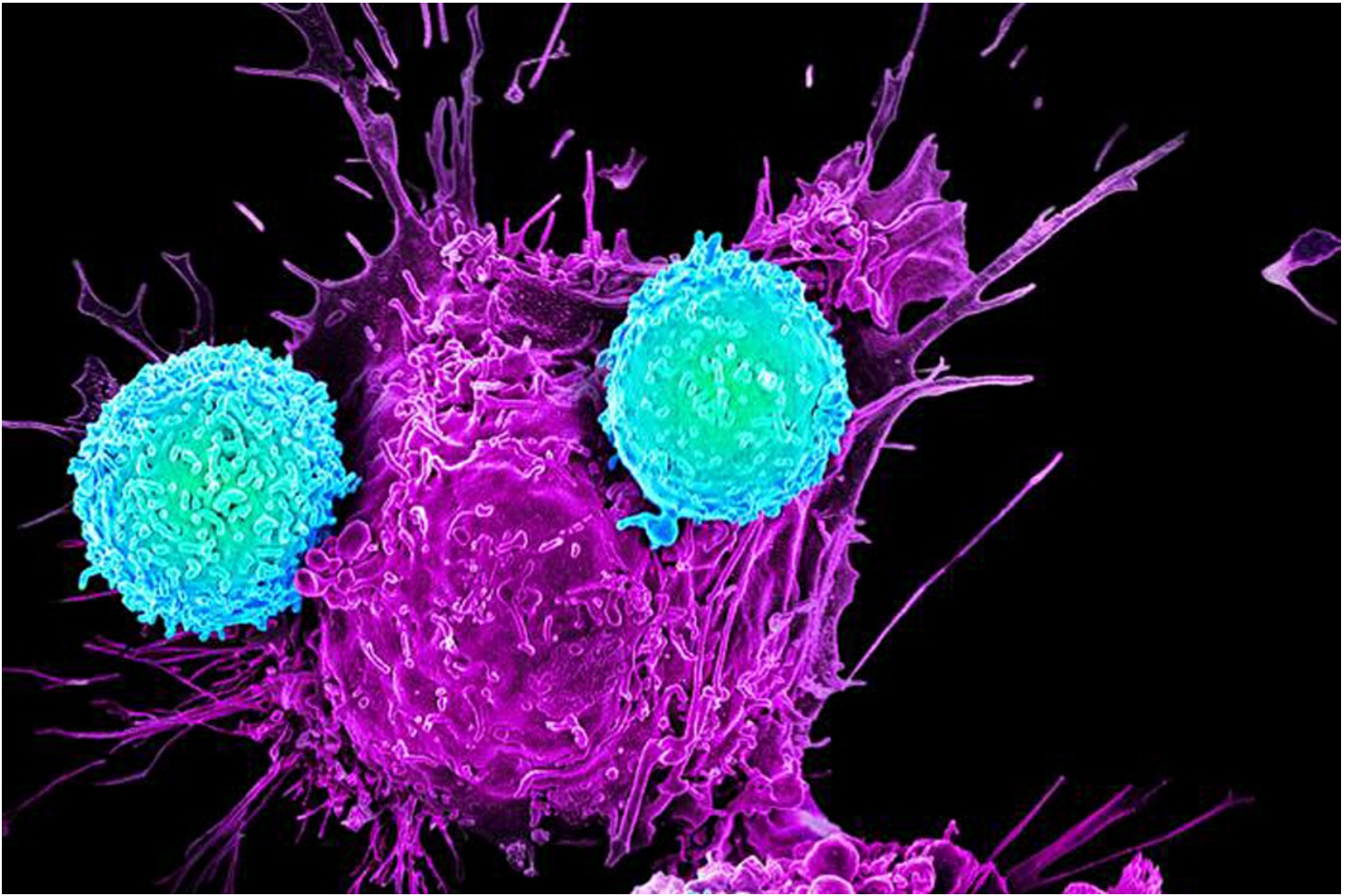
Prasad S. Adusumilli, MD

Professor and Deputy Chief, Thoracic Service; Vice Chair for Translational Research, Dept. of Surgery; Co-Director, MSK Mesothelioma Program; Min H. and Yu-Fan C. Kao Chair in Thoracic Cancers

Research led by Prasad S. Adusumilli focuses on investigation of the tumor immune microenvironment and the development of T-cell-mediated immunotherapy for thoracic malignancies and pleural-based diseases. His team has championed regional immunotherapy delivery strategies, resulting in translation of mesothelin-targeted CAR T-cell immunotherapy for malignant pleural mesothelioma, lung, and breast cancers.



[View Lab Overview](#) →



Cover Image from J Clin Invest Aug 1 2016. Cherkassky L, Morello A, Villena-Vargas J, Feng Y, Dimitrov DS, Jones DR, Sadelain M, Adusumilli PS. Human CAR T cells with cell-intrinsic PD-1 checkpoint blockade resist tumor-mediated inhibition. J Clin Invest. 2016;126(8):3130-44



Cover Image from J Clin Invest Aug 1 2016. Cherkassky L, Morello A, Villena-Vargas J, Feng Y, Dimitrov DS, Jones DR, Sadelain M, Adusumilli PS. Human CAR T cells with cell-intrinsic PD-1 checkpoint blockade resist tumor-mediated inhibition. J Clin Invest. 2016;126(8):3130-44.

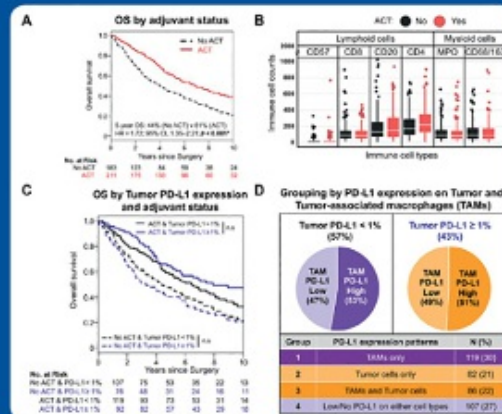
Journal of Thoracic Oncology



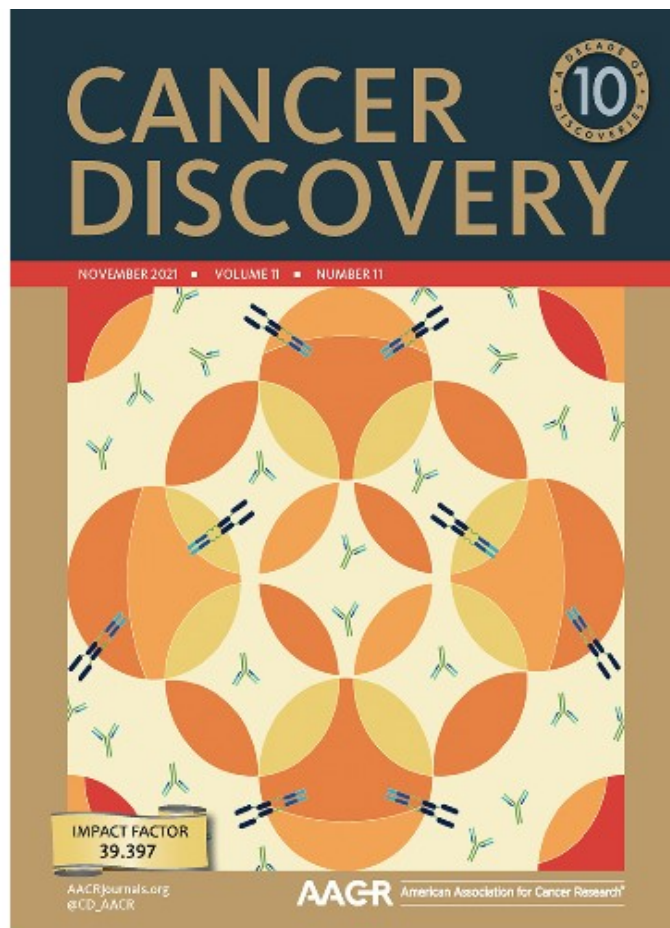
INTERNATIONAL
ASSOCIATION
FOR THE STUDY
OF LUNG CANCER
Comparing Thoracic Cancers Worldwide

Volume 17, Number 1, January 2022

Alex A. Adjei, MD, PhD, FACP, Editor-in-Chief



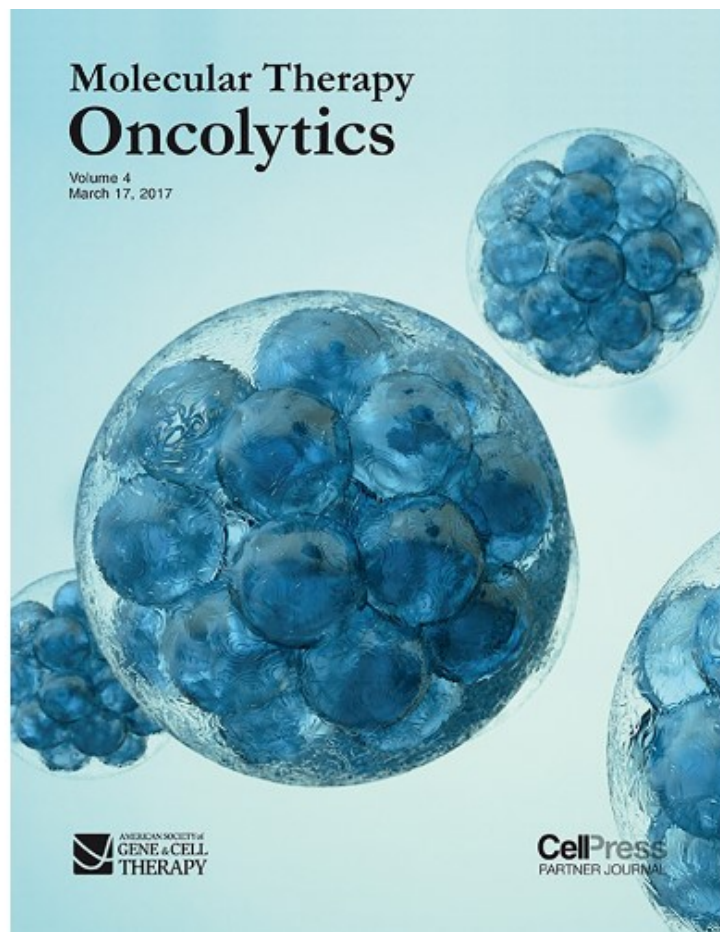
Cover Image from J Thoracic Oncology Jan 2022. Gross DJ, Chintala NK, Vaghjiani RG, Grosser R, Tan KS, Li X, Choe J, Li Y, Aly RG, Emoto K, Hua Z, Dux J, Cheema W, Bott MJ, Travis WD, Isbell JM, Li BT, Jones DR, Adusumilli PS. Tumor and Tumor-Associated Macrophage PD-L1 Expression is Associated with Adjuvant Chemotherapy Benefit in Lung Adenocarcinoma. J Thorac Oncol. 2022;17(1):89-102.



Cover Image from Cancer Discovery Nov 2021. Adusumilli PS, Zauderer MG, Rivière I, Solomon SB, Rusch VW, O'Cearbhaill RE, Zhu A, Cheema W, Chintala NK, Halton H, Pineda J, Perez-Johnston R, Tan KS, Daly B, Araujo Filho JA, Ngai D, McGee E, Vincent A, Diamonte C, Sauter JL, Modi S, Sikder D, Senechal B, Wang X, Travis WD, Gönen M, Rudin CM, Brentjens RJ, Jones RJ, Sadelain M. A phase I trial of regional mesothelin-targeted CAR T-cell therapy in patients with malignant pleural disease, in combination with the anti-PD-1 agent pembrolizumab. Cancer Discov. 2021;11(11):2748-2763.



Cover Image from J Thoracic Oncology Jan 2018. Kiesgen S, Chicaybam L, Chintala NK, Adusumilli PS*. Chimeric antigen receptor (CAR) T-cell therapy for thoracic malignancies. J Thorac Oncol. 2018;13(1):16-26.



Cover Image from Mol Ther Oncolytics – Vol 4, Mar 17, 2017.

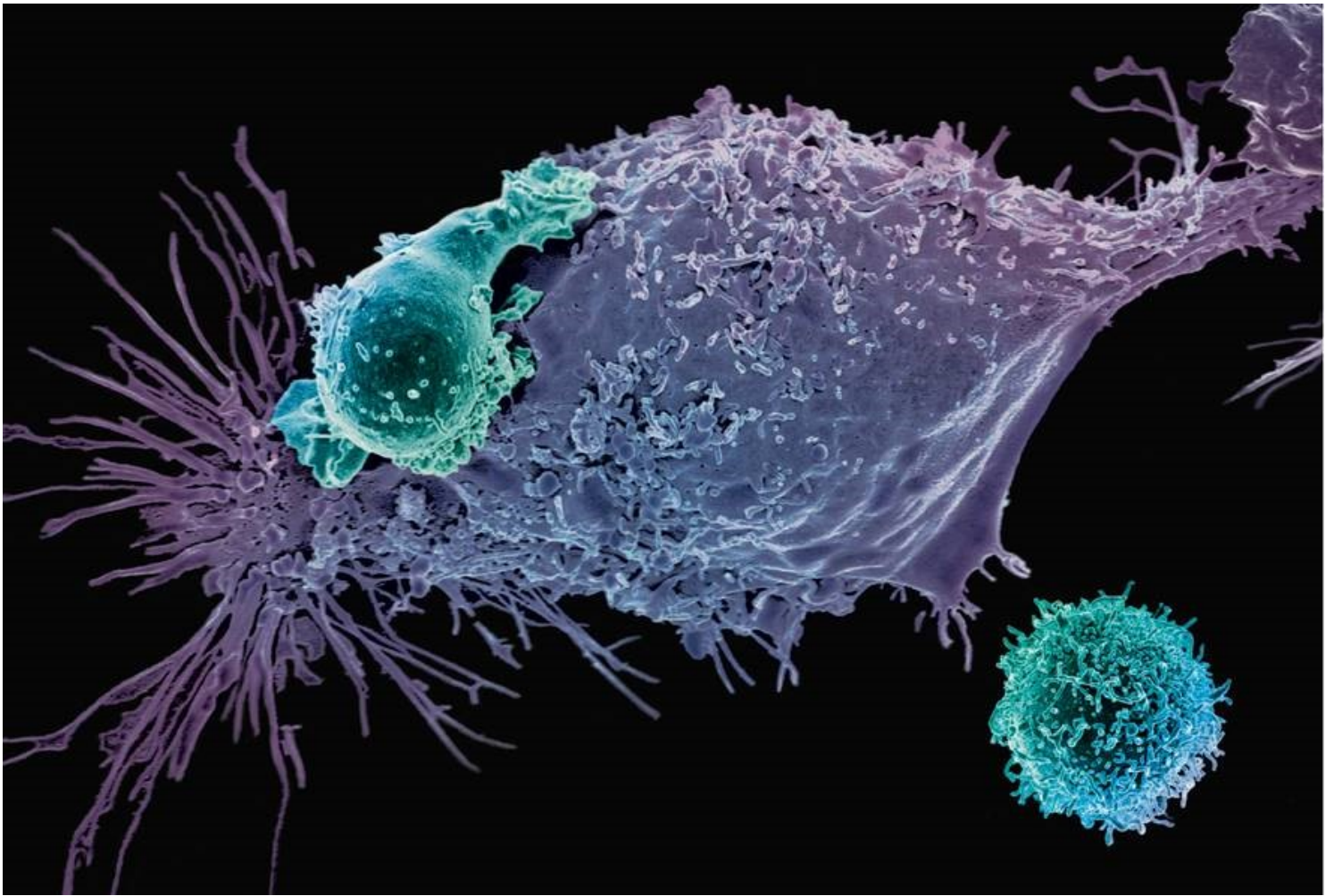


Image from Science Sept 2016. Couzin-Frankel J. (2016, September 2). Second chapter. Science. 353(6303):983-5.5.



Cover Image from Cancer Immunology Research Oct 2023. Quach HT, Skovgard MS, Villena-Vargas J, Bellis RY, Chintala NK, Amador-Molina A, Bai Y, Banerjee S, Saini J, Xiong Y, Vista WR, Byun AJ, De Biasi A, Zeltsman M, Mayor M, Morello A, Mittal V, Gomez DR, Rimner A, Jones DR, Adusumilli PS. Tumor-Targeted Nonablative Radiation Promotes Solid Tumor CAR T-cell Therapy Efficacy. Cancer Immunol Res. 2023 Oct 4;11(10):1314-1331. doi: 10.1158/2326-6066.CIR-22-0840. PMID: 37540803; PMCID: PMC10592183.

<

>

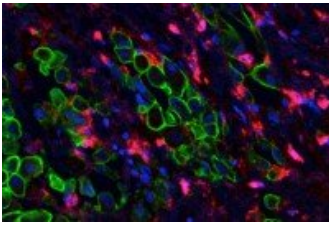
Featured News



[New Design Could Make CAR T Cells a More Effective Immunotherapy for Solid Tumors](#)

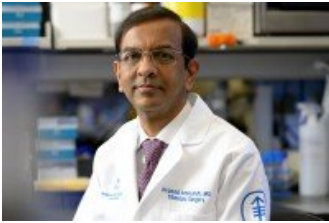
Learn how researchers engineered CAR T cells to work better by using a mutation in a gene called c-KIT that drives cancer cell growth.

IN THE CLINIC



[CAR Therapy for Solid Tumors Draws Attention at Annual Cancer Conference](#)

Results from a clinical trial indicate that an experimental CAR therapy for mesothelioma is safe.



[New Finding Could Predict Which People with Lung Cancer Will Benefit from Chemotherapy](#)

Researchers identify a biomarker that could predict which lung cancer patients will respond to chemotherapy.

[View All Featured News](#)

Publications Highlights

[Xiong Y, Taleb M, Misawa K, Hou Z, Banerjee S, Amador-Molina A, Jones DR, Chintala NK, Adusumilli PS. c-Kit signaling potentiates CAR T-cell efficacy in solid tumors by CD28- and IL-2-independent costimulation. *Nat Cancer*. 2023;4\(7\):1001-1015. \[PMID: 37336986\]](#)

[Quach HT, Skovgard MS, Villena-Vargas J, Bellis RY, Chintala NK, Amador-Molina A, Bai Y, Banerjee S, Saini J, Xiong Y, Vista WR, Byun AJ, De Biasi A, Zeltsman M, Mayor M, Morello A, Mittal V, Gomez DR, Rimner A, Jones DR, Adusumilli PS. Tumor-targeted non-ablative radiation promotes solid tumor CAR T-cell therapy efficacy. *Cancer Immunol Res*. 2023;11\(10\):1314-1331. \[PMID: 37540803\]](#)

[Adusumilli PS, Zauderer M, Riviere I, ...Jones DR, Sadelain M. A phase I trial of regional mesothelin-targeted CAR T-cell therapy in patients with malignant pleural disease, in combination with the anti-PD1 agent pembrolizumab. *Cancer Discov*. 2021 Nov;11\(11\):2748-2763. \[PMID: 34266984\]](#)

[Cherkassky L, Morello A, Villena-Vargas J, Feng Y, Dimitrov DS, Jones DR, Sadelain M, Adusumilli PS. Human CAR T cells with cell-intrinsic PD-1 checkpoint blockade resist tumor-mediated inhibition. *J Clin Invest*. 2016;126\(8\):3130-3144. \[PMID: 27454297\]](#)

[Adusumilli PS, Cherkassky L, Villena-Vargas J, Colovos C, Servais E, Plotkin J, Jones DR, Sadelain M. Regional delivery](#)

[of mesothelin-targeted CAR T cell therapy generates potent and long-lasting CD4-dependent tumor immunity. *Sci Transl Med.* 2014;6\(261\):261ra151. \[PMID: 25378643\]](#)

[View All Publications](#)

People



Prasad S. Adusumilli, MD

Professor and Deputy Chief, Thoracic Service; Vice Chair for Translational Research, Dept. of Surgery; Co-Director, MSK Mesothelioma Program; Min H. and Yu-Fan C. Kao Chair in Thoracic Cancers

Physician-scientist Prasad S. Adusumilli studies tumor immunology and the development of T-cell-mediated immunotherapy for thoracic malignancies and pleural-based diseases.

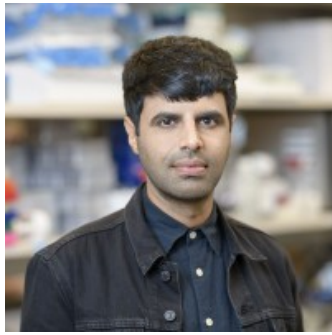
[View physician profile](#)

Physician profile

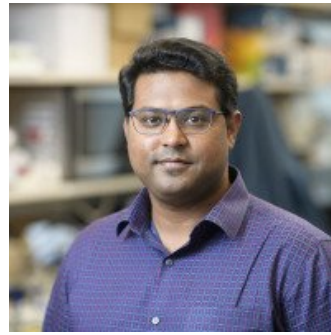
Members



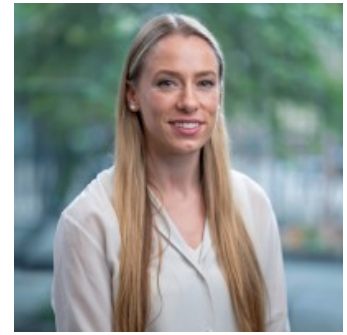
Lara
Cani
Clinical Research
Coordinator



Waseem Cheema
Research Project Manager



Navin K
Chintala
Senior Research Assistant



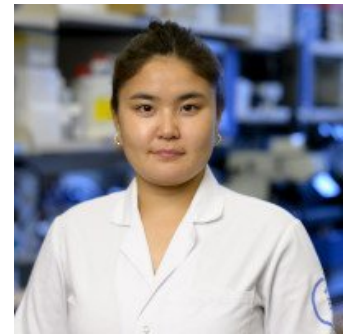
Victoria
Cranwell
Research Fellow



Lauren
Drake
Research Fellow



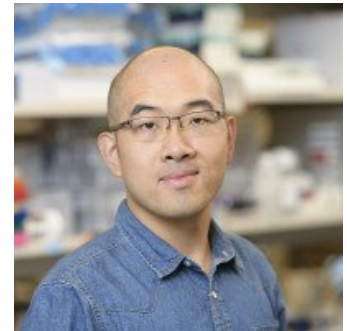
Patrick Evans
Project Manager



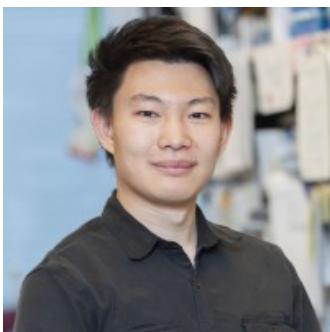
Undrakh Ganbaatar
Research Fellow



Jesus Guzman Valle
Senior Research
Technician



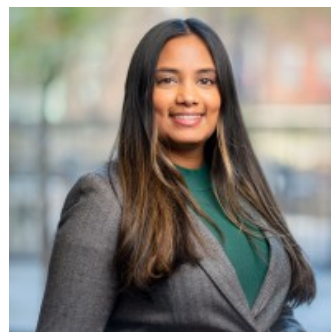
Zhaohua
Hou
Senior Research Scientist



Kyohei Misawa



Viviana Rubino



Jasmeen Saini

Research Technician

Research Fellow

Sarah

Sadik

Clinical Research
Coordinator

Clinical Research
Associate



Meriem

Taleb

Research Fellow



Carlos Thomas

Senior Research Assistant



William Vista

Lab Alumni

+

Lab Affiliations

+

Open Positions

To learn more about available postdoctoral opportunities, please visit our [Career Center](#)

To learn more about compensation and benefits for postdoctoral researchers at MSK, please visit [Resources for Postdocs](#)

Postdoctoral Fellow

[Apply now](#) →

▼ Connect

[Contact us](#)

[Locations](#)

APPOINTMENTS

[800-525-2225](#)



▼ About MSK

[About us](#)

[Careers](#) 

[Giving](#) 

▼ Cancer Care

[Adult cancer types](#)

[Child & teen cancer types](#)

[Integrative medicine](#)

[Nutrition & cancer](#)

[Find a doctor](#)

▼ Research & Education

[Sloan Kettering Institute](#)

[Gerstner Sloan Kettering Graduate School](#) 

[Graduate medical education](#)

[MSK Library](#) 

[Communication preferences](#)

[Cookie preferences](#)

[Legal disclaimer](#)

[Accessibility statement](#)

[Privacy policy](#)

[Price transparency](#)

[Public notices](#)

© 2024 Memorial Sloan Kettering Cancer Center

