

Ready to start planning your care? Call us at [800-525-2225](tel:800-525-2225) to make an appointment.

×



Memorial Sloan Kettering  
Cancer Center

[Make an Appointment](#)  
[Back](#)

[About Our Mission, Vision & Treatment Research Programs](#)  
[Learn About Cancer & Treatment](#)

## ABOUT US

[Our mission, vision & core values](#)

[Leadership](#)

[History](#)

[Inclusion & belonging](#)

[Annual report](#)

[Give to MSK](#)

FOR THE MEDIA



Physician-scientist Adrienne Boire's lab studies metastasis to the central nervous system as part of the Human Oncology & Pathogenesis Program.

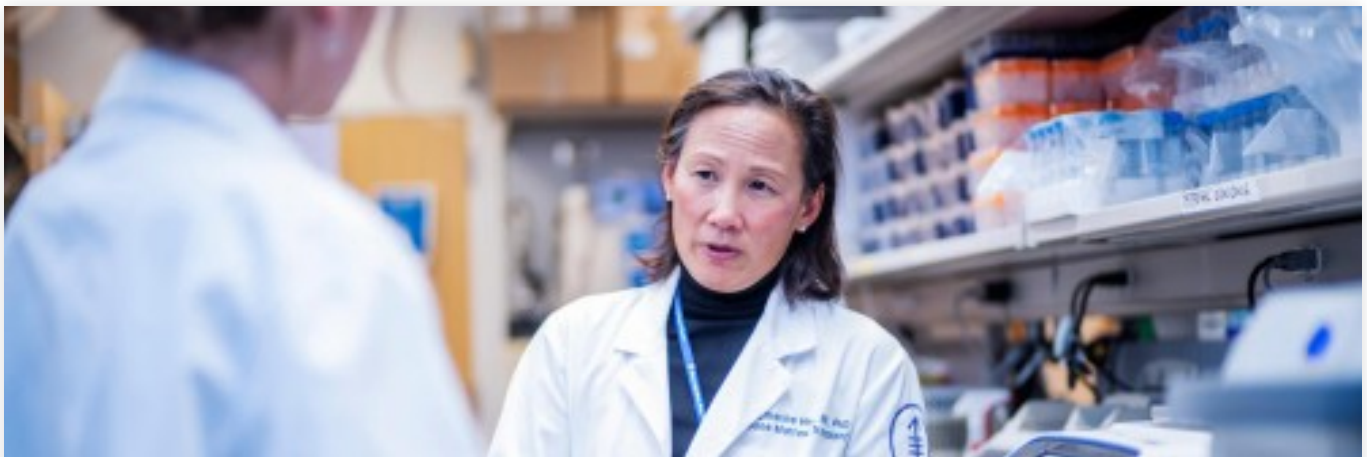
In addition to providing patients with the best possible cancer care, Memorial Hospital maintains an extensive research program.

Our scientists focus on basic laboratory research, translational research that bridges discoveries made in the laboratory and those made in the clinic, and mathematical and computational research directed at analyzing and interpreting biomedical data.



### [Human Oncology & Pathogenesis Program](#)

Scientists in Memorial Sloan Kettering's Human Oncology and Pathogenesis Program (HOPP) are bridging basic and clinical science to transform cancer care and address major scientific challenges in the era of precision medicine.



### [Immuno-Oncology Program](#)

The program continues and expands MSK's vital work to understand how cancer evades the immune system and to make immunotherapy effective for more patients and cancer types.



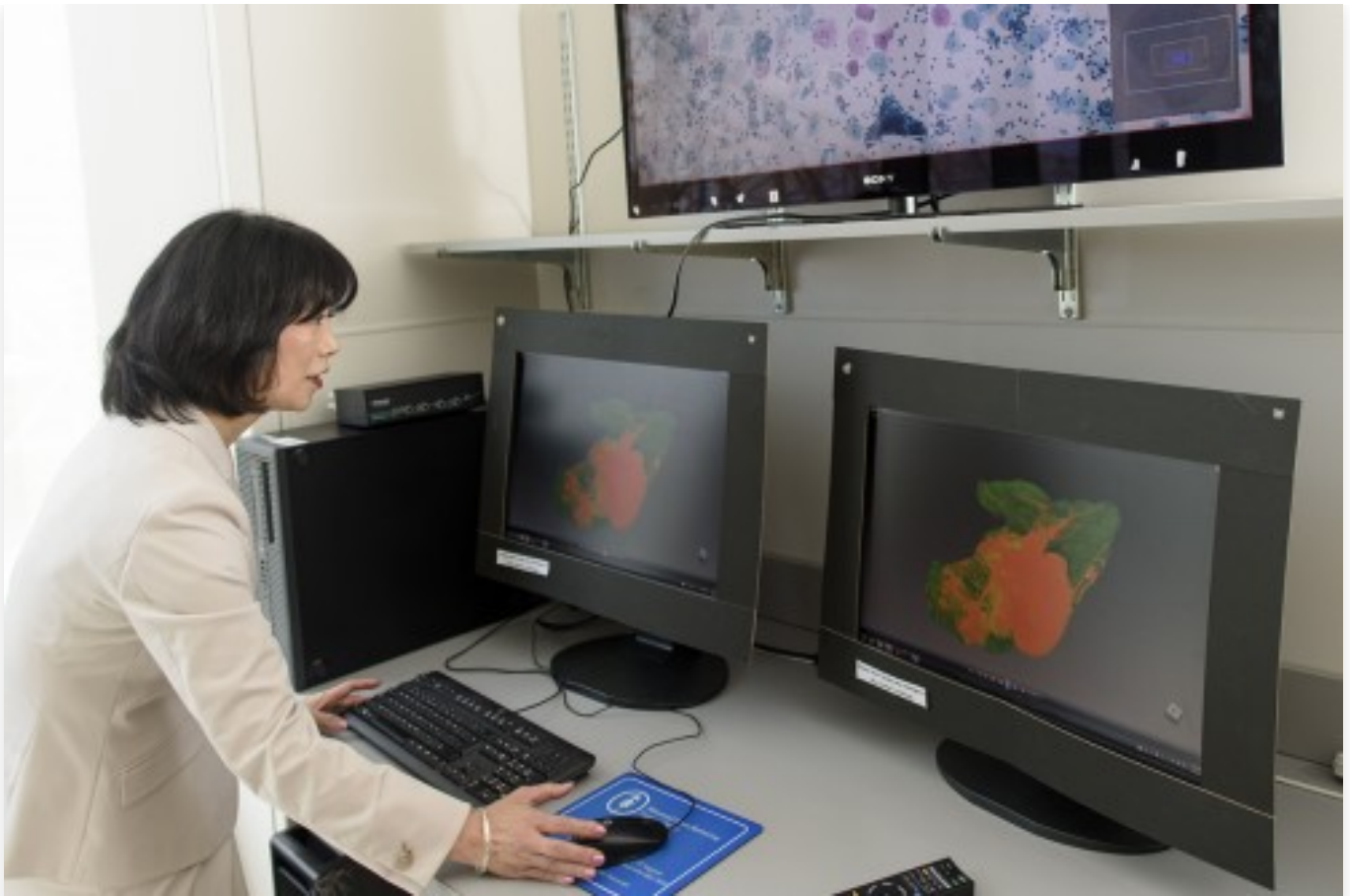
## [Epidemiology & Biostatistics](#)

Our research aims to better understand the causes of cancer and to develop new strategies for diagnosing, treating, and preventing the disease.



## [Memorial Hospital Research Laboratories](#)

Learn more about physician-scientists who head basic and translational research labs within Memorial Hospital.



## [Hospital Research Teams](#)

Learn more about physician-led translational and clinical research teams within Memorial Hospital.

© 2025 Memorial Sloan Kettering Cancer Center