



Memorial Sloan Kettering
Cancer Center

Thoracic Pathology Fellowship

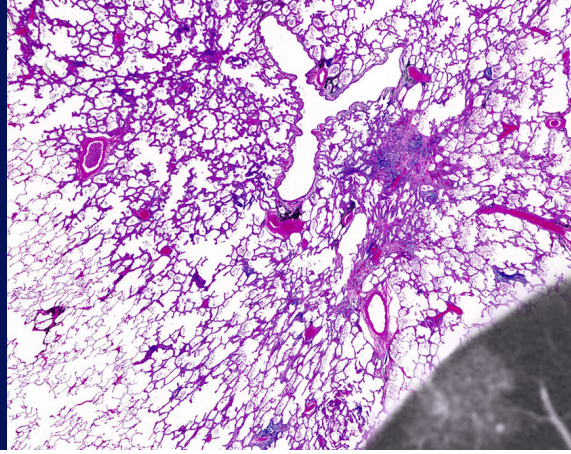
The Department of Pathology and Laboratory Medicine at Memorial Sloan Kettering Cancer Center offers a one-year Thoracic Pathology Fellowship Training Program. This program is accredited by the Accreditation Council for Graduate Medical Education (ACGME). All fellows should have completed training in anatomic pathology and be certified (or eligible for certification) by the American Board of Pathology by the time they will start this fellowship.

Memorial Sloan Kettering Cancer Center is recognized nationally and internationally for its expertise in pathologic diagnosis of pulmonary, pleural, and mediastinal diseases. In addition to outstanding thoracic pathologists, the in-house hospital-based Thoracic Disease Management Team (DMT) consists of a world-class group of thoracic surgeons, oncologists, radiologists, radiation therapists, and molecular biologists. A high volume of quality in-house surgical and consultation pathology material provides a strong foundation for this training program.

There are three ACGME accredited Thoracic Pathology Fellows per year with three rotations on 1) the hospital service, 2) consults and 3) translational research

Research Training

Multiple research opportunities exist to collaborate within the Thoracic Multidisciplinary Team at MSKCC



Number of Positions: Three

Length of Program: One Year
(starting July 1st)

How to Apply: Online Only (apply at least 18 months prior to planned start date) <https://mskcc.embark.com/login/apply?target=pathology>

Contact:

Angelica Angel and Sheila Vazquez,
Department of Pathology and
Laboratory Medicine, Memorial Sloan
Kettering Cancer Center

212-639-7102

pthfellows@mskcc.org

For More Information Visit:

<https://www.mskcc.org/departments/pathology-laboratory-medicine/fellowships>

Or scan the
QR code ➡



involving thoracic surgery, medical oncology, radiology, radiation oncology, molecular pathology and computational pathology. The fellows will have dedicated time available to work on research projects, which should allow time for scientific publications involving tumors and non-neoplastic diseases of the lung, mediastinum and pleura.

Goals and Objectives

- To provide training in diagnostic thoracic pathology including both neoplastic and non-neoplastic disorders.
- To learn how to manage an efficient, high-quality diagnostic pathology consultation service.
- To understand problem areas in thoracic pathology that need to be solved by carefully designed research projects.
- To learn how to design a research project, to execute the idea, collect and organize the data, analyze the data, formulate a conclusion and write a paper.
- To learn how to interact with thoracic physicians in other disciplines to achieve the correct diagnosis in complex cases.

Clinical Training

During the clinical training, the fellow will be responsible for running the thoracic pathology consult service. This clinical service consists of second opinion consultations on difficult neoplastic and non-neoplastic pulmonary, pleural, and mediastinal specimens. In addition, the fellow will observe and provide assistance to the oncologic surgical pathology fellows who are rotating on the thoracic in-house service. The consultations provide a broad “spectrum exposure to non-neoplastic as well as neoplastic material, thus providing an excellent supplement to the hospital-based thoracic material fellows will encounter.

Many of the consultation cases and a substantial percentage of the in-house cases are complex and require ancillary techniques such as histochemical and/or immunohistochemical and molecular studies as well as clinical or radiologic correlation. In addition, there are frequent opportunities for interaction with all five of the senior staff, with many educational discussions about diagnostic criteria, differential diagnoses, recent pertinent publications, and the limitations of existing classification systems. A study set of 1000 digitized cases of pulmonary, mediastinal, and pleural specimens, including many rare entities, is also available for study.

We also have conferences featuring out-standing thoracic radiologists who discuss consultations that include chest radiologic images, as well as weekly conferences with clinical staff (surgeons, radiologists, oncologists, etc.) to discuss current cases. These conferences allow for exposure to a dynamic integrated approach to the diagnosis of a variety of thoracic entities, including non-neoplastic lung disease.

Project Completion

During the year of training, the fellows are expected to complete at least one research project that should result in an article for publication in the medical literature. The project should be based on the large volume of outstanding archival and current clinical material. The fellow is also expected to give a presentation of this research at a departmental conference, and he or she will submit an abstract to be presented at the United States and Canadian Academy of Pathology annual meeting.

William D. Travis, MD

Program Director

212.639.3325 | travisw@mskcc.org

Natasha Rekhtman, MD

Associate Program Director

212-639-6235 | rekhtman@mskcc.org