

Ready to start planning your care? Call us at [800-525-2225](tel:800-525-2225) to make an appointment.

×



Memorial Sloan Kettering
Cancer Center

[Make an Appointment](#)

[Back](#)

[In the News](#)

[Refer a Patient](#)

[About Us](#) [Our mission, vision & core values](#) [Leadership](#) [History](#) [Equality, diversity & inclusion](#) [Annual report](#) [Give to MSK](#)

ABOUT US

[Our mission, vision & core values](#)

[Leadership](#)

[History](#)

[Equality, diversity & inclusion](#)

[Annual report](#)

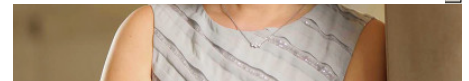
[Give to MSK](#)

[sarcomas](#) and [melanomas](#).

In the clinic, she is involved in a multidisciplinary effort to analyze tumor tissues and to develop clinical trials tailored to individual patients' tumors. As a member of the [Human Oncology and Pathogenesis Program](#), she also heads a laboratory that focuses on the study of critical genetic and epigenetic factors that determine the cellular-context-dependent oncogenic transformation and development of novel biomarkers and therapeutics in sarcomas, in particular gastrointestinal stromal tumors and malignant peripheral nerve sheath tumors, using cell, tissue, and mouse models.

Dr. Chi received her MD degree from Weill Cornell Medical College and her PhD degree from The Rockefeller University. She completed her residency at Brigham and Women's Hospital, a [medical oncology fellowship](#) at Memorial Sloan Kettering, and a postdoctoral research fellowship at Rockefeller before joining the Memorial Sloan Kettering faculty in 2011.

The Geoffrey Beene Junior Faculty Chairs were designed to provide funding to outstanding young researchers from across the institution at a crucial early stage in their careers. They are part of Memorial Sloan Kettering's [Geoffrey Beene Cancer Research Center](#), an initiative funded by a gift from the estate of the late fashion designer Geoffrey Beene. The center brings together investigators and clinicians dedicated to the study of the molecular mechanisms of cancer.



Physician-scientist Ping Chi

Connect

[Contact us](#)

[Locations](#)

APPOINTMENTS

[800-525-2225](#)

▾ About MSK

[About us](#)

[Careers](#) ■

[Giving](#) ■

▾ Cancer Care

[Adult cancer types](#)

[Child & teen cancer types](#)

[Integrative medicine](#)

[Nutrition & cancer](#)

[Find a doctor](#)

▾ Research & Education

[Sloan Kettering Institute](#)

[Gerstner Sloan Kettering Graduate School](#) ■

[Graduate medical education](#)

[MSK Library](#) ■

[Communication preferences](#)

[Cookie preferences](#)

[Legal disclaimer](#)

[Accessibility statement](#)

[Privacy policy](#)

[Price transparency](#)

[Public notices](#)

© 2024 Memorial Sloan Kettering Cancer Center