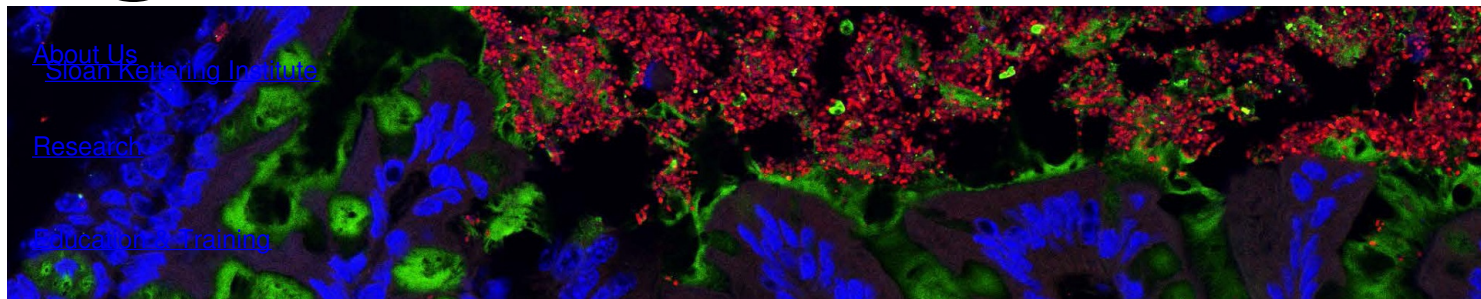


Ready to start planning your care? Call us at [800-525-2225](tel:800-525-2225) to make an appointment.

×



Memorial Sloan Kettering
Cancer Center



[About Us](#)
[Sloan Kettering Institute](#)

[Research](#)

[Education](#) [Training](#)

[News & Events](#)

IMMUNOLOGY PROGRAM

[Open Positions](#)

The Marcel van den Brink Lab

Immunology Program

Research



Marcel R. M. van den Brink, MD, PhD

Immuno-oncology is increasingly becoming an important therapy for a variety of cancers. As Head of the Division of Hematologic Malignancies and an Attending Physician of the Adult Bone Marrow Transplantation Service, I see patients undergoing a bone marrow transplantation. In my lab, I study novel strategies to improve immune therapies for cancer patients with a special emphasis on the role of the intestinal microbiome in (patho)physiology and therapy, Chimeric Antigen Receptor T cell therapy, and regeneration of thymic function to improve T cell immunity.

Please visit our official website at vandenbrinklab.org!

[View Lab Overview](#) →

Research Projects

[Manipulating Immune Function and Thymus Recovery](#)

[Mechanisms Regulating Graft-versus-Host Disease](#)

[Microbiota and Mucosal Immunity Effects on BMT Outcomes](#)

[CAR T Cells](#)

[Clinical and Translational Studies](#)

VIDEO | 02:13

Learn more about MSK's graduate, postdoctoral and medical education programs.

[Video Details](#) →



van den Brink Lab group photo

Featured News

[How gut reactions are shaping cancer treatment](#)

An explosion of interest in the workings of the gut microbiome is fueling career and funding opportunities in a wide array of fields. MSK's Marcel van ...



[How Do Gut Microbes Affect the Success of CAR T Immunotherapy? New Answers From MSK](#)

In an effort to improve patients' response to immunotherapy, MSK researchers have studied how microorganisms in the gut affect outcomes in people receiving CAR T therapy.



[Memorial Sloan Kettering Cancer Center Tops Prestigious List of Highly Cited Researchers](#)

Memorial Sloan Kettering Cancer Center (MSK) is proud to announce that it is ranked among the top 20 organizations with the greatest number of highly cited scientific researchers worldwide, according to the annual list of Highly Cited Researchers published by the Institute for Scientific Information at Clarivate.

[View All Featured News](#)

Publications Highlights

Smith M, Dai A, Ghilardi G, Amelsberg KV, Devlin SM, Pajarillo R, Slingerland JB, Beghi S, Herrera PS, Giardina P, Clurman A, Dwomoh E, Armijo G, Gomes ALC, Littmann ER, Schluter J, Fontana E, Taur Y, Park JH, Palomba ML, Halton E, Ruiz J, Jain T, Pennisi M, Afuye AO, Perales MA, Freyer CW, Garfall A, Gier S, Nasta S, Landsburg D, Gerson J, Svoboda J, Cross J, Chong EA, Giralt S, Gill SI, Riviere I, Porter DL, Schuster SJ, Sadelain M, Frey N, Brentjens RJ, June CH, Pamer EG, Peled JU, Facciabene A, van den Brink MRM, Ruella M. Gut microbiome correlates of response and toxicity following anti-CD19 CAR T cell therapy. Nat Med. 2022 Mar 14. doi: 10.1038/s41591-022-01702-9. Epub ahead of print. PMID: 35288695.

Miltiadous O, Waters NR, Andriova H, Dai A, Nguyen CL, Burgos da Silva M, Lindner S, Slingerland J, Giardina P,

Clurman A, Armijo GK, Gomes AL, Lakkaraja M, Maslak PG, Scordo M, Shouval R, Staffas A, O'Reilly RJ, Taur Y, Prockop S, Boelens JJ, Giralt S, Perales MA, Devlin SM, Peled JU, Markey KA, van den Brink MRM. Early intestinal microbial features are associated with CD4 T cell recovery after allogeneic hematopoietic transplant. *Blood*. 2022 Jan 21;blood.2021014255. doi: 10.1182/blood.2021014255. Epub ahead of print. PMID: 35061893.

[Peled JU, Gomes ALC, Devlin SM, Littmann ER, Taur Y, Sung AD, Weber D, Hashimoto D, Slingerland AE, Slingerland JB, Maloy M, Clurman AG, Stein-Thoeringer CK, Markey KA, Docampo MD, Burgos da Silva M, Khan N, Gessner A, Messina JA, Romero K, Lew MV, Bush A, Bohannon L, Brereton DG, Fontana E, Amoretti LA, Wright RJ, Armijo GK, Shono Y, Sanchez-Escamilla M, Castillo Flores N, Alarcon Tomas A, Lin RJ, Yáñez San Segundo L, Shah GL, Cho C, Scordo M, Politikos I, Hayasaka K, Hasegawa Y, Gyurkocza B, Ponce DM, Barker JN, Perales MA, Giralt SA, Jenq RR, Teshima T, Chao NJ, Holler E, Xavier JB, Pamer EG, van den Brink MRM. Microbiota as Predictor of Mortality in Allogeneic Hematopoietic-Cell Transplantation. *N Engl J Med*. 2020 Feb 27;382\(9\):822-834. doi: 10.1056/NEJMoa1900623.](#)

[Markey KA, Schluter J, Gomes ALC, Littmann ER, Pickard AJ, Taylor BP, Giardina PA, Weber D, Dai A, Docampo MD, Armijo GK, Slingerland AE, Slingerland JB, Nichols KB, Brereton DG, Clurman AG, Ramos RJ, Rao A, Bush A, Bohannon L, Covington M, Lew MV, Rizzieri DA, Chao N, Maloy M, Cho C, Politikos I, Giralt S, Taur Y, Pamer EG, Holler E, Perales MA, Ponce DM, Devlin SM, Xavier J, Sung AD, Peled JU, Cross JR, van den Brink MRM. The microbe-derived short-chain fatty acids butyrate and propionate are associated with protection from chronic GVHD. *Blood*. 2020 Jul 2;136\(1\):130-136. doi: 10.1182/blood.2019003369.](#)

[Stein-Thoeringer CK, Nichols KB, Lazrak A, Docampo MD, Slingerland AE, Slingerland JB, Clurman AG, Armijo G, Gomes ALC, Shono Y, Staffas A, Burgos da Silva M, Devlin SM, Markey KA, Bajic D, Pinedo R, Tsakmaklis A, Littmann ER, Pastore A, Taur Y, Monette S, Arcila ME, Pickard AJ, Maloy M, Wright RJ, Amoretti LA, Fontana E, Pham D, Jamal MA, Weber D, Sung AD, Hashimoto D, Scheid C8, Xavier JB, Messina JA, Romero K, Lew M, Bush A, Bohannon L, Hayasaka K, Hasegawa Y, Vehreschild MJGT, Cross JR, Ponce DM, Perales MA, Giralt SA, Jenq RR, Teshima T1, Holler E, Chao NJ, Pamer EG, Peled JU, van den Brink MRM. Lactose Drives Enterococcus Expansion to Promote Graft-versus-Host Disease. *Science*. 2019; 366\(6469\)1143–1149.](#)

[View All Publications](#)

People



Marcel R. M. van den Brink, MD, PhD

Physician-scientist Marcel R. M. van den Brink studies the immunology of bone marrow transplantation with a particular focus on intestinal microbiome and strategies to enhance thymus and immune reconstitution.

MD, PhD, Universiteit Leiden

✉ vandenbm@mskcc.org

Email Address

☎ [646-888-2304](tel:646-888-2304)

Office Phone

Members



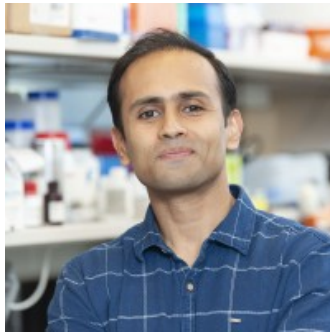
Sophia Chen
Research Associate



Anqi
Dai
Computational Biologist II



Susan De
Wolf
Instructor



Harold Elias
Research Fellow



Jacob Fischman
Senior Research
Technician



Emily
Fontana
Manager, Molecular
Microbiology Facility



Brianna Gipson
Research Technician



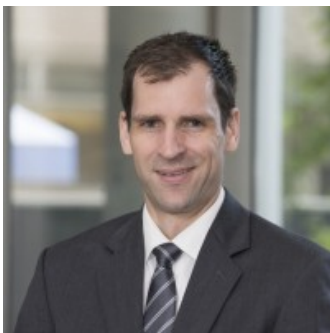
Ana
Gradissimo
Scientific Research Lead



Leana Harford
Clinical Research
Specialist



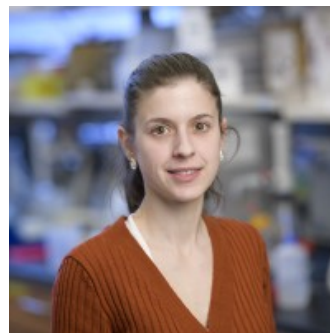
Pamela Herrera
(Hatfield)
Graduate Student



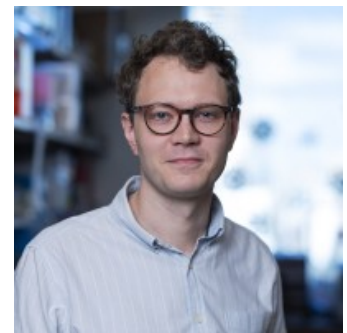
Scott James
Assistant Attending Lv. 1



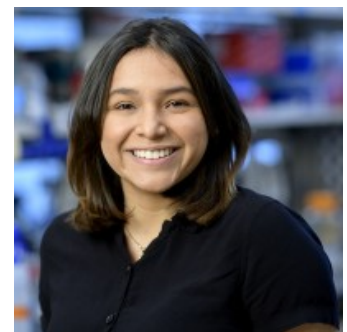
Raman Kaur
Administrative Assistant,
Sr



Anastasia Kousa
Research Associate



Andri
Lemarquis
Research Scholar



Sarah Lindner
Senior Research Scientist

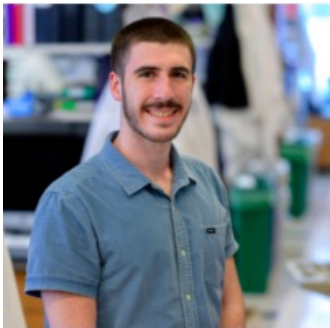
Meng Lyu
Visiting Investigator

Dylan
Manuele
CAR T Cell Research
Technician

Alyssa Massa
Research Technician



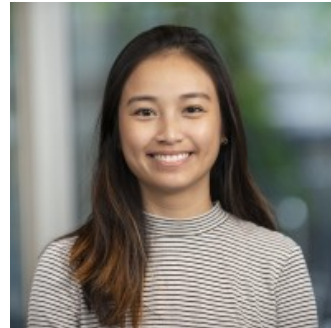
Oriana
Miltiadous
Pediatric
Hematology/Oncology
Clinical Instructor



Justin Neuberger
Clinical Research
Coordinator



Brandon
Ng
Graduate Student



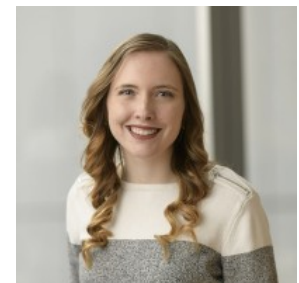
Chi Nguyen
Graduate Student



M. Lia Palomba
Hematologic Oncologist



Jenny Paredes
Sanchez
Research Scholar



Marissa Peterson
Program Coordinator



Katarina Piasevoli
Senior Project Manager

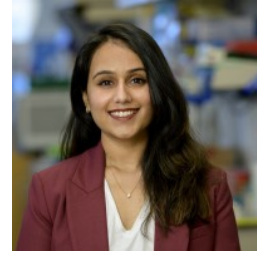


Sandeep S.
Raj
Hematology Oncology
Fellow

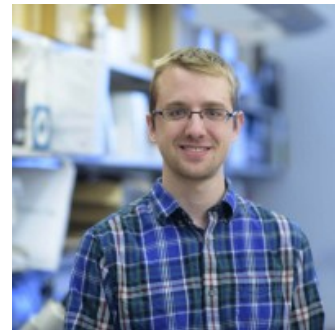
Adhithi Rajagopalan
Research Fellow



Keimya
Sadeghi
Data Engineer



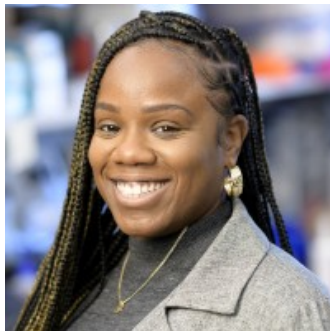
Mihika Shah
Project Coordinator



John Slingerland
Research Project Manager



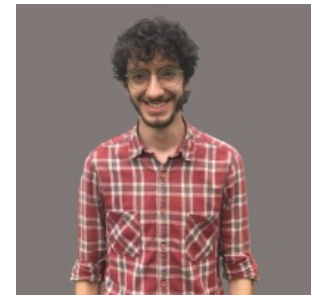
Natalie Smith
Clinical Research
Coordinator



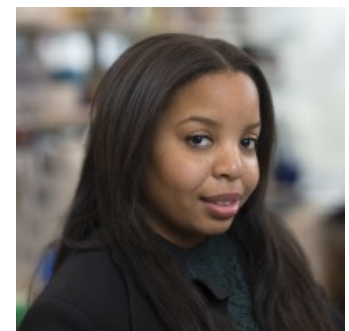
Angelica
Stephenson
Senior Administrative
Assistant



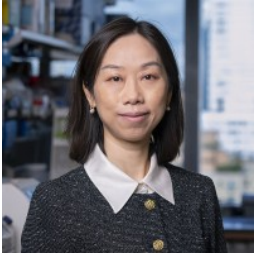
Charlotte Subklewe
Graduate Research
Assistant



Nicholas Waters
Computational Biologist



Roberta
Wright
Research Assistant,



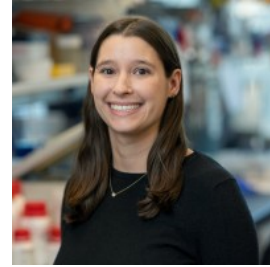
Haowen Xiao
Visiting Investigator



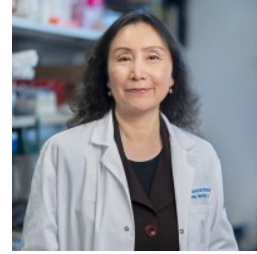
Kristen Victor
Senior Research
Technician



Adam
Warren
Clinical Research
Coordinator



Zoe Katsamakis



Xiaoqun
Zhang
Lab Manager

Lab Alumni
+

Lab Affiliations
+

Achievements

Head of the Division of Hematologic Malignancies at MSKCC (2008 - present)
Royal Dutch Academy of Sciences (2020)
International Society for Experimental Hematology: Till and McCulloch Lectureship Award (2015)
Alan N. Houghton Chair in Immunology at MSKCC (2007)
Howard Hughes Physician Scientist Award (1996)

Lab News & Events



Lab social at Treadwell Park!



Some of our lab members attending the US Open

Get in Touch

✉ vandenbm@mskcc.org

Lab Head Email

☎ [646-888-2304](tel:646-888-2304)

Office Phone

☎ [646-422-0452](tel:646-422-0452)

Office Fax

☎ [646-888-2317](tel:646-888-2317)

Lab Phone

☎ [646-422-0452](tel:646-422-0452)

Lab Fax

✂ [Follow Marcel van den Brink on X!](#)

Disclosures

Doctors and faculty members often work with pharmaceutical, device, biotechnology, and life sciences companies, and other organizations outside of MSK, to find safe and effective cancer treatments, to improve patient care, and to educate the health care community.

MSK requires doctors and faculty members to report (“disclose”) the relationships and financial interests they have with external entities. As a commitment to transparency with our community, we make that information available to the public.

Marcel R. M. van den Brink discloses the following relationships and financial interests:

DKMS

Fiduciary Role / Position; Professional Services and Activities

Garuda Therapeutics

Professional Services and Activities

GlaxoSmithKline

Professional Services and Activities (Uncompensated)

Juno Therapeutics

Intellectual Property Rights

Pluto Immunotherapeutics

Equity; Professional Services and Activities

Seres Therapeutics

Equity; Intellectual Property Rights; Professional Services and Activities

Smart Immune SAS

Professional Services and Activities

ThymoFox, Inc.

Equity

The information published here is for a specific annual disclosure period. There may be differences between information on this and other public sites as a result of different reporting periods and/or the various ways relationships and financial interests are categorized by organizations that publish such data.

This page and data include information for a specific MSK annual disclosure period (January 1, 2022 through disclosure submission in spring 2023). This data reflects interests that may or may not still exist. This data is updated annually.

Learn more about MSK’s COI policies [here](#). For questions regarding MSK’s COI-related policies and procedures, email MSK’s Compliance Office at ecoi@mskcc.org.

[View all disclosures](#) →

▾ About Us

[Overview](#)

[Leadership](#)

[Administration](#)

[History](#)

[Contact Us](#)



▾ Research

[Overview](#)

[Research programs](#)

[Research labs](#)

[Core facilities & resources](#)

▾ Education & Training

[Overview](#)

[Postdoctoral training](#)

[Gerstner Sloan Kettering Graduate School](#)

[Joint graduate programs](#)

[Programs for college & high school students](#)

▾ News & Events

[Overview](#)

[Seminars & events](#)

▾ Open Positions

[Overview](#)

[Faculty positions](#)

[Postdoctoral positions](#)

[Communication preferences](#)

[Cookie preferences](#)

[Legal disclaimer](#)

[Accessibility Statement](#)

[Privacy policy](#)

[Public notices](#)

© 2024 Memorial Sloan Kettering Cancer Center