

Ready to start planning your care? Call us at [800-525-2225](tel:800-525-2225) to make an appointment.

×



Memorial Sloan Kettering
Cancer Center

[Make an Appointment](#)

[← Back](#)

[Cancer Care](#) [Patient & Family Resources](#) [Research & Treatment](#)

[Refer a Patient](#)

ABOUT US

[Our mission, vision & core values](#)

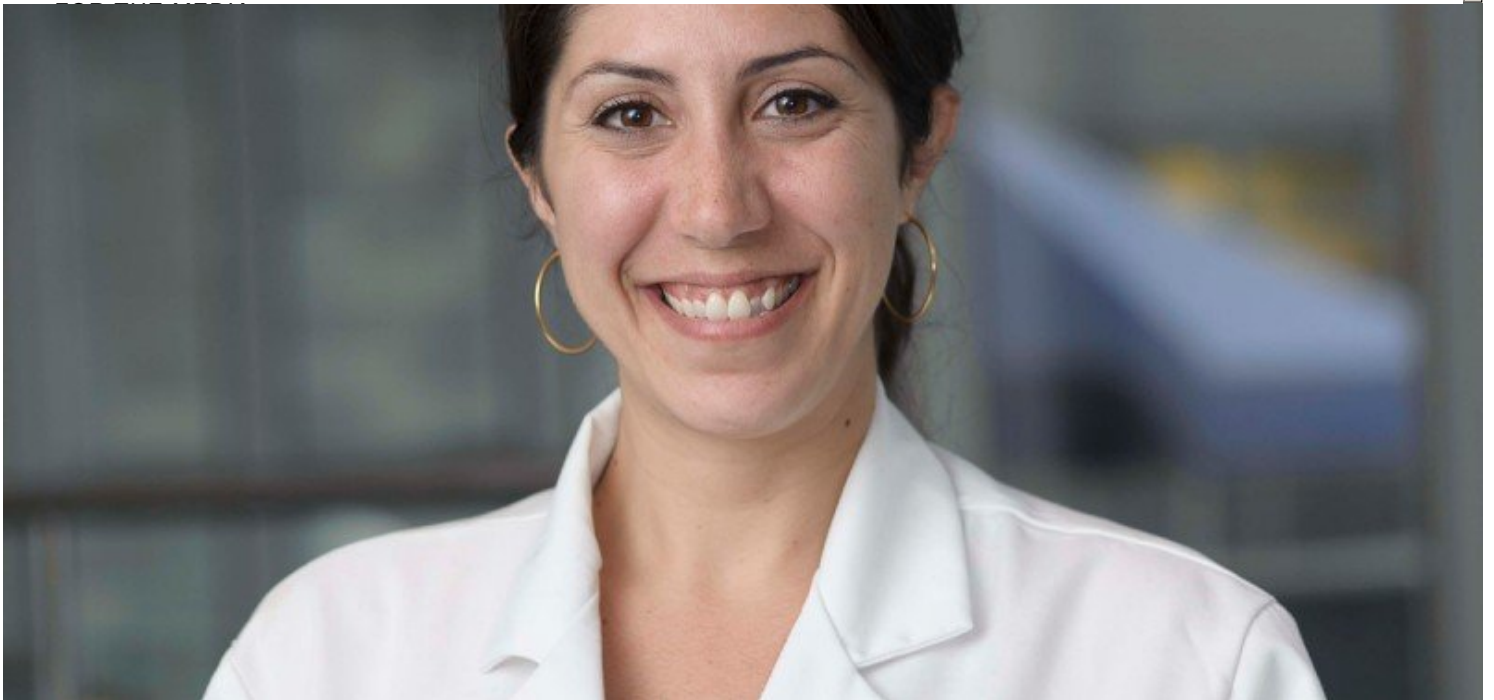
[Leadership](#)

[History](#)

[Equality, diversity & inclusion](#)

[Annual report](#)

[Give to MSK](#)



I joined Memorial Sloan Kettering in 2001 and became a clinical nurse specialist in 2011. My primary role is to educate staff nurses about aspects of disease-specific patient care, standards of care, and hospital initiatives. Over the past several years, we have educated and trained staff in caring for adults undergoing bone marrow transplantation, and in caring for patients with leukemia, lymphoma, or multiple myeloma.

I worked closely with clinical nurse specialists and others creating a two-day educational program to enhance the understanding of nurses caring for patients with blood cancers who are undergoing (or have undergone) a bone marrow transplant.

Read more



Clinical Expertise

- Leukemia (Adult)
- Lymphoma (Adult)
- Bone Marrow Transplantation (Adult)
- Telemetry Monitoring (Adult)

Languages Spoken

English

Certifications

- Adult Nurse Practitioner Board Certified (ANP-BC), ANCC
- Oncology Certified Nurse (OCN)

Licensures

- Masters of Science in Nursing, Adult Nurse Practitioner (ANP), Hunter College
- Bachelors of Science in Nursing (BSN), Mount Saint Mary College
- Nurse Practitioner (NP), Adult Health
- Registered Professional Nurse (RN)

Connect

Contact us

Locations

APPOINTMENTS

800-525-2225



About MSK

About us

Careers

Giving

▼ Cancer Care

[Adult cancer types](#)

[Child & teen cancer types](#)

[Integrative medicine](#)

[Nutrition & cancer](#)

[Find a doctor](#)

▼ Research & Education

[Sloan Kettering Institute](#)

[Gerstner Sloan Kettering Graduate School](#) 

[Graduate medical education](#)

[MSK Library](#) 

[Communication preferences](#)

[Cookie preferences](#)

[Legal disclaimer](#)

[Accessibility statement](#)

[Privacy policy](#)

[Price transparency](#)

[Public notices](#)

© 2024 Memorial Sloan Kettering Cancer Center