

X



Make an Appointment

[Back](#)

Cancer Care

Cancer Care

Refer a Patient

Our mission, vision & core values

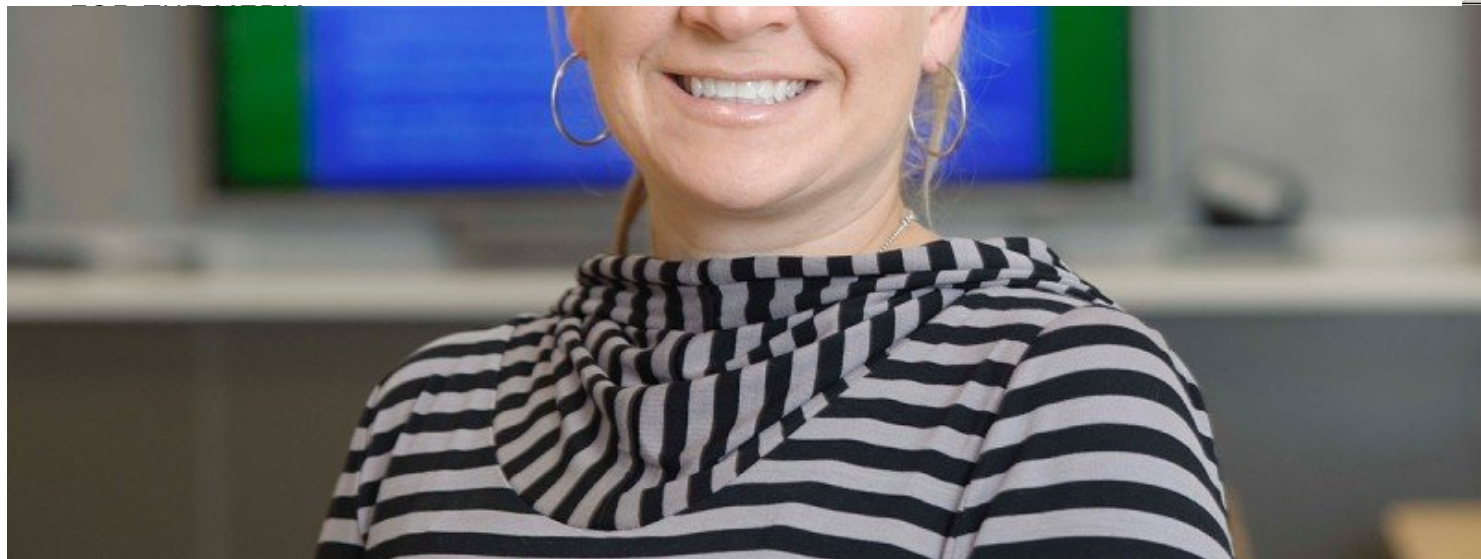
Leadership

History

Equality, diversity & inclusion

Annual report

Give to MSK



I joined Memorial Sloan Kettering in July 2013, in a newly created position on the outpatient Lymphoma Service. I provide care for patients who are receiving active chemotherapy as well those who are on follow-up, helping with procedures such as bone marrow biopsies and lumbar punctures with intrathecal chemotherapy.

I received my physician assistant degree in 2005. After working as a hospitalist, I decided to look for a position with more patient continuity. I have always had a strong interest in oncology and in 2006 accepted a position at Roswell Park Cancer Institute in Buffalo, where I worked primarily with people with gastrointestinal cancer undergoing treatment or participating in clinical trials. After moving to Connecticut last year, I worked in private general hematology-oncology practice before joining Memorial Sloan Kettering.

Read more

+

Clinical Expertise

Lymphoma (Adult)

GI Oncology (Adult)

Languages Spoken

English

Certifications

National Commission on Certification of Physician Assistants

Licensures

Bachelor of Science (BS) in Physician Assistant Studies, D'Youville College

Bachelor of Science (BS) in Human Physiology, Michigan State University

Licensed Physician Assistant, New York State, State of Connecticut

[Communication preferences](#)

[Cookie preferences](#)

[Legal disclaimer](#)

[Accessibility statement](#)

[Privacy policy](#)

[Price transparency](#)

[Public notices](#)

© 2024 Memorial Sloan Kettering Cancer Center