

Ready to start planning your care? Call us at [800-525-2225](tel:800-525-2225) to make an appointment.

×



Memorial Sloan Kettering
Cancer Center

[Make an Appointment](#)

[Back](#)

[Breast Cancer Diagnosis & Treatment](#)

[Refer a Patient](#)

ABOUT US

[Our mission, vision & core values](#)

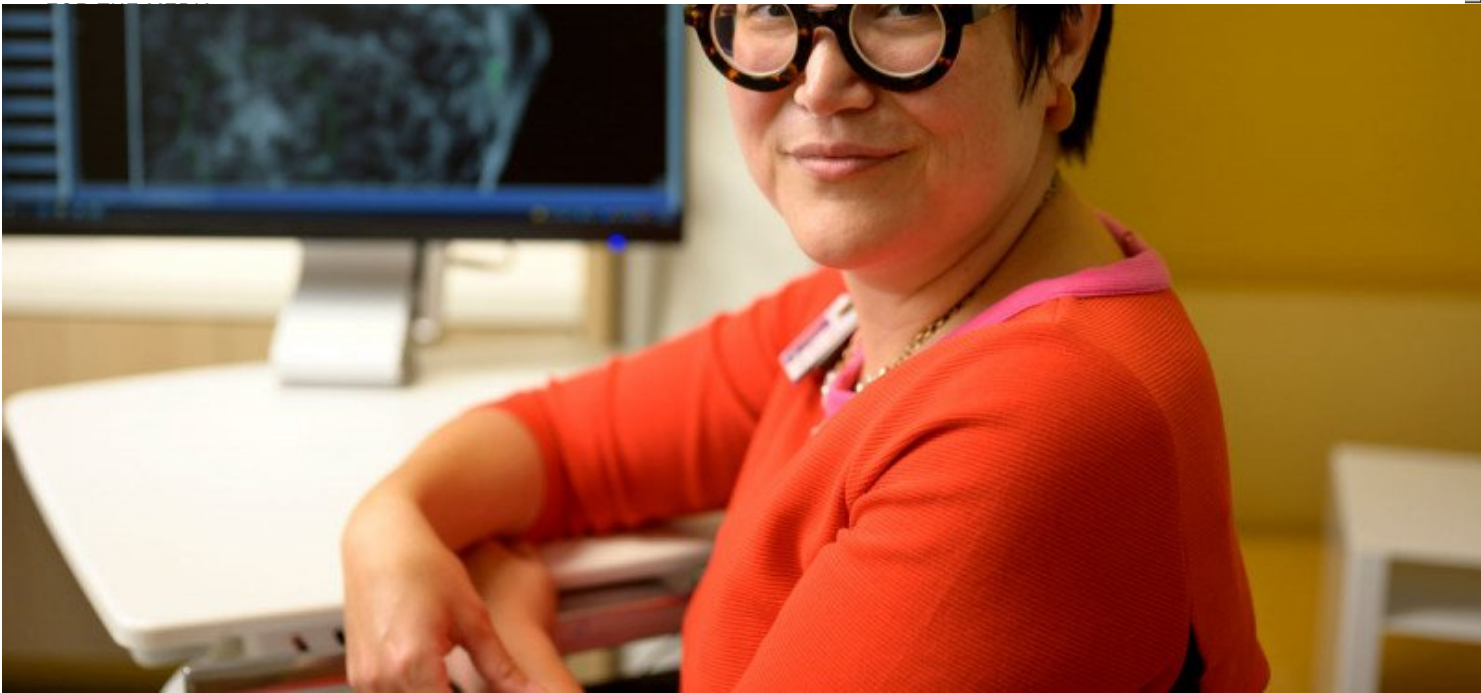
[Leadership](#)

[History](#)

[Equality, diversity & inclusion](#)

[Annual report](#)

[Give to MSK](#)



MSK's breast cancer doctors, including radiation oncologist Fumiko Chino (shown here), work closely with you to design a personalized treatment plan based on your precise diagnosis.

Our doctors use a number of tests and procedures to diagnose cancerous changes in the breast. These include:

- medical history
- physical exam
- imaging tests such as mammogram, ultrasound, and MRI

If your doctor finds signs of breast cancer, we may perform other tests, including a [breast biopsy](#), to find out more information about what [type of breast](#)

[cancer](#) it is and how far it has advanced. A biopsy is the only test that can make a definite diagnosis of breast cancer.

A biopsy also provides information about [breast cancer tumor markers](#), which determine the drugs that should be used to treat it. Not all breast cancers are the same, and they aren't all treated in the same way. So it's important for your healthcare team to have this information before pursuing a treatment plan.

Request an Appointment

Call [646-497-9064](tel:646-497-9064)
Available Monday through Friday, 8 a.m. to 6 p.m. (Eastern time)

[Make an Appointment](#)

We regularly measure the levels of the estrogen receptor (ER) and progesterone receptor (PR) in the tissue sample taken from the cancer. The amount of ER and PR that are present in invasive breast cancer can be used to predict how the tumor will respond to [treatments that lessen the hormones in your body](#). (Examples of these are tamoxifen and aromatase inhibitors.)

We also routinely measure the presence of a protein called human epidermal growth factor-2 (HER2) in invasive carcinoma. This can also have an effect on treatment options. For example, your doctor may recommend a [targeted therapy](#).

Sometimes, the biology of a breast tumor changes if it metastasizes (spreads) to another part of the body. Your doctor may want to take another biopsy to re-check markers at that time. We can also perform more-specialized testing that can help us determine whether you would benefit from [clinical trials](#) that test new targeted treatments.

PREVIOUS
[Breast Cancer Screening Guidelines](#)

NEXT
[Breast Biopsy Procedures](#)

Connect

Contact us

Locations

APPOINTMENTS

800-525-2225

About MSK

About us

Careers

Giving

- Cancer Care

[Adult cancer types](#)

[Child & teen cancer types](#)

[Integrative medicine](#)

[Nutrition & cancer](#)

[Find a doctor](#)

- Research & Education

[Sloan Kettering Institute](#)

[Gerstner Sloan Kettering Graduate School](#) ■

[Graduate medical education](#)

[MSK Library](#) ■

[Communication preferences](#)

[Cookie preferences](#)

[Legal disclaimer](#)

[Accessibility statement](#)

[Privacy policy](#)

[Price transparency](#)

[Public notices](#)

© 2024 Memorial Sloan Kettering Cancer Center