

Ready to start planning your care? Call us at [800-525-2225](tel:800-525-2225) to make an appointment.

×



Memorial Sloan Kettering
Cancer Center

[Make an Appointment](#)
[Back](#)
[Treatment for Esophageal Cancer](#)
[Refer a Patient](#)

ABOUT US

[Our mission, vision & core values](#)
[Leadership](#)
[History](#)
[Equality, diversity & inclusion](#)
[Annual report](#)
[Give to MSK](#)

- reviewing your recent medical history and doing a physical examination
- detecting whether the cancer has returned
- identifying and managing the effects of cancer and its treatment
- giving [screening](#) referrals for other cancers
- recommending action on [nutrition](#), [exercise](#), and quitting [smoking](#)
- summarizing treatment and giving follow-up care
- consulting with your MSK doctor as needed

Your NP will work closely with your MSK treatment team. He or she will provide you with a treatment summary. It will have information about all the treatments you've had, and a care plan that you can share with your primary care doctor and any other medical care providers. Your doctors can then use this information in your overall medical plan.

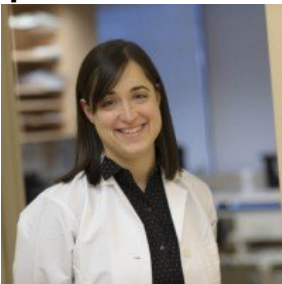
After each follow-up visit, your NP will update your other medical providers.

As your need for NP visits decreases, we may recommend that you shift your care to your primary care doctor or gastroenterologist. The timing depends on which type of esophageal cancer you had and what type of treatment you got.

Your MSK Follow-Up Providers



[Amy Devigne](#)
Nurse Practitioner



[Alison Berkowitz Hergianto](#)
Nurse Practitioner

Request an Appointment

Call [800-525-2225](tel:800-525-2225)
Available Monday through Friday, 8 a.m. to 6 p.m. (Eastern time)

[Make an Appointment](#)

PREVIOUS

[Radiation Therapy for Esophageal Cancer](#)

NEXT

[Living Beyond Esophageal Cancer](#)

Connect

[Contact us](#)

[Locations](#)

APPOINTMENTS

[800-525-2225](#)

About MSK

[About us](#)

[Careers](#)

[Giving](#)

Cancer Care

[Adult cancer types](#)

[Child & teen cancer types](#)

[Integrative medicine](#)

[Nutrition & cancer](#)

[Find a doctor](#)

Research & Education

[Sloan Kettering Institute](#)

[Gerstner Sloan Kettering Graduate School](#)

[Graduate medical education](#)

[MSK Library](#)

[Communication preferences](#)

[Cookie preferences](#)

[Legal disclaimer](#)

[Accessibility statement](#)

[Privacy policy](#)

[Price transparency](#)

[Public notices](#)

© 2024 Memorial Sloan Kettering Cancer Center