

Ready to start planning your care? Call us at [800-525-2225](tel:800-525-2225) to make an appointment.

×



Memorial Sloan Kettering
Cancer Center

[Make an Appointment](#)

[Back](#)

[Prostate Cancer Treatments](#)

[Learn About Prostate Cancer Treatment](#)

[Refer a Patient](#)

— — — — —

ABOUT US

[Our mission, vision & core values](#)

[Leadership](#)

[History](#)

[Equality, diversity & inclusion](#)

[Annual report](#)

[Give to MSK](#)

— — — — —

After you've finished your medical treatments, one of our specialized nurses will periodically:

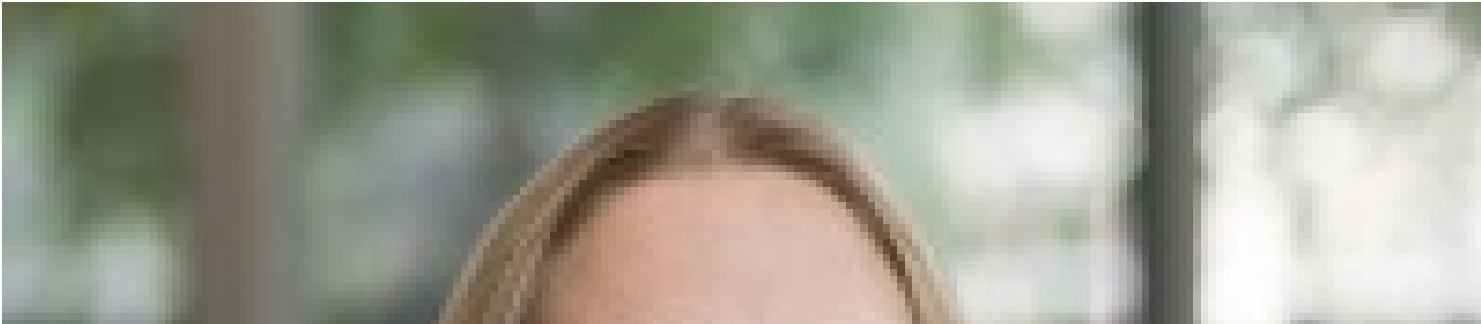
- review your recent medical history and do a physical examination
- look for any signs that cancer has come back
- refer you for screening for other cancers when indicated
- discuss methods to prevent new health problems and make health recommendations related to [nutrition](#), [exercise](#), and [quitting tobacco use](#)

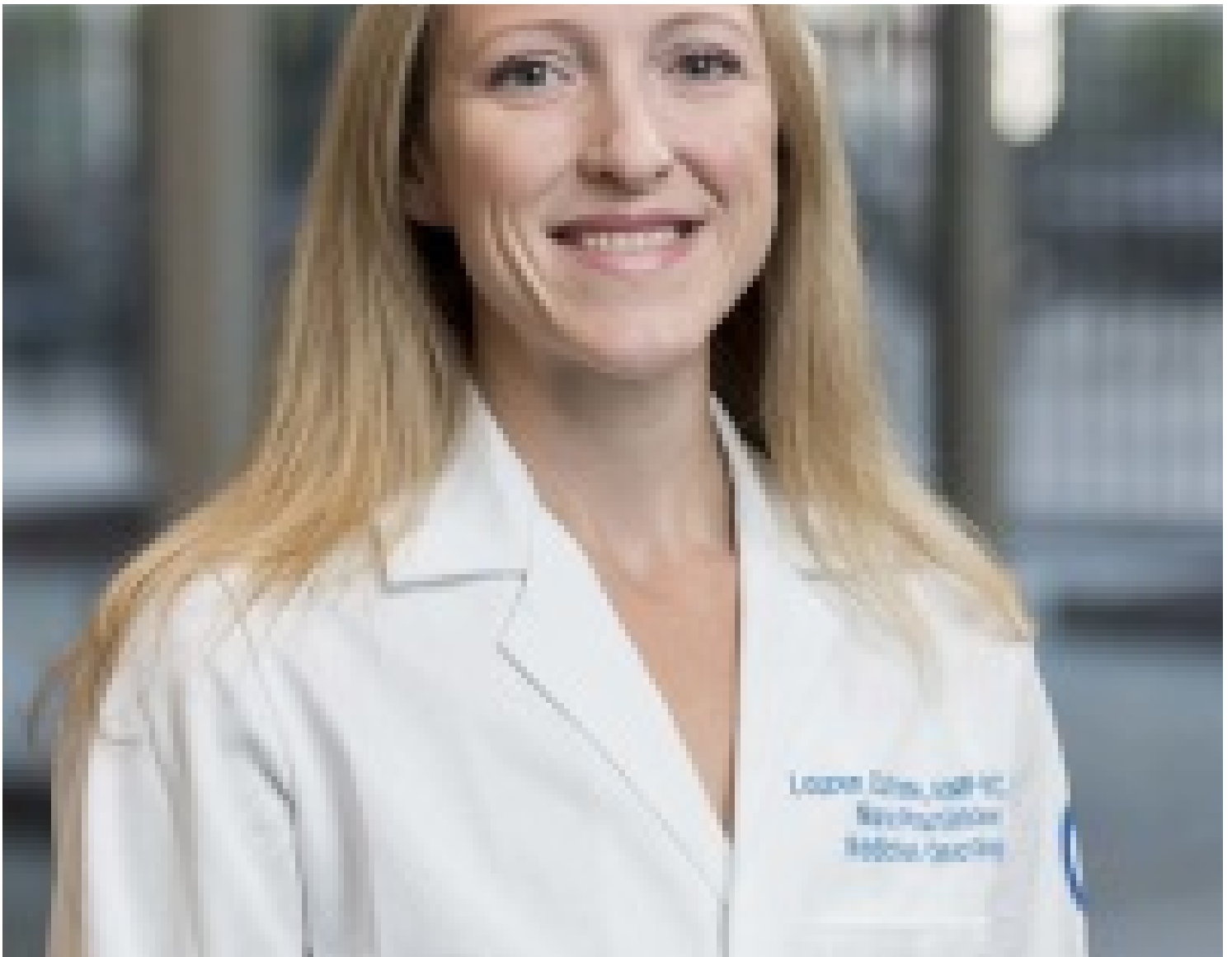
Your follow-up care team works closely with your doctors to put together a treatment summary and follow-up care plan and will connect you to your doctors as needed.

The nurse practitioners on your team also provide your survivorship care plan. It's given to you, your primary care doctor, and other medical providers who are part of your overall medical plan. After each visit at MSK, the nurse practitioner will continue to update your other medical providers.

As you need less cancer care over time, we may transition your follow-up care to your primary care physician. The timing for this depends on your particular cancer and treatment. We're always available if you or your doctors ever have a cancer-related question or if a new cancer-related problem arises.

Your MSK Follow-Up Providers





[Lauren Cutrone](#)

Nurse Practitioner



[Peggy](#)

[Lynch](#)

Nurse Practitioner



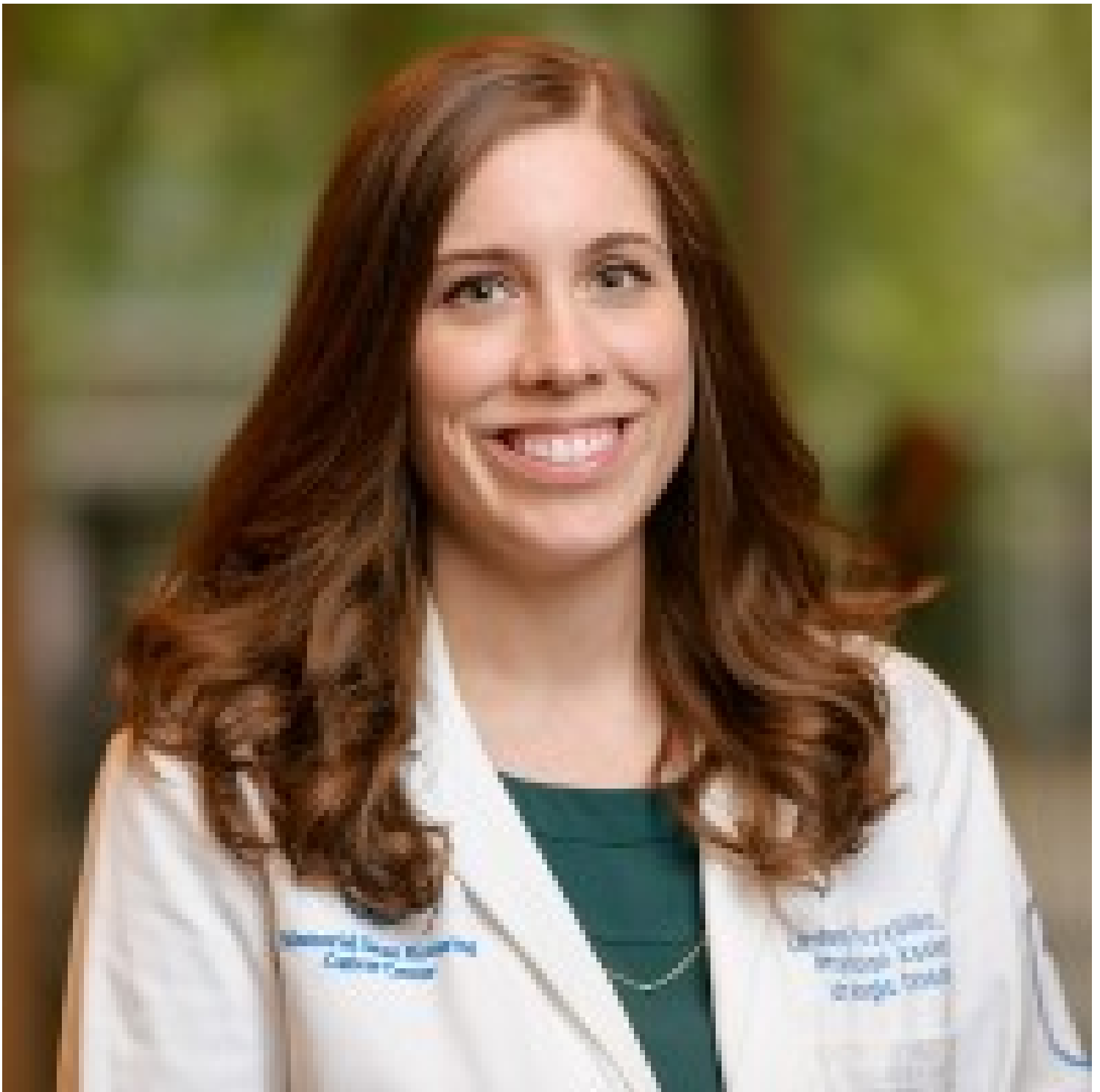
[Victor Kurt
Huwe](#)

Family Nurse Practitioner



[Melissa Muller](#)

Nurse Practitioner



[Lindsey Przybilla](#)

Physician Assistant



[Cristen Fiore
Staiano](#)

Nurse Practitioner



[Seeta Verron](#)

Nurse Practitioner



Request an Appointment

Call [800-525-2225](tel:800-525-2225)

Available Monday through Friday, 8 a.m. to 6 p.m. (Eastern time)

Connect

[Contact us](#)

[Locations](#)

APPOINTMENTS

[800-525-2225](#)



About MSK

[About us](#)

[Careers](#)

[Giving](#)

Cancer Care

[Adult cancer types](#)

[Child & teen cancer types](#)

[Integrative medicine](#)

[Nutrition & cancer](#)

[Find a doctor](#)

Research & Education

[Sloan Kettering Institute](#)

[Gerstner Sloan Kettering Graduate School](#)

[Graduate medical education](#)

[MSK Library](#)

[Communication preferences](#)

[Cookie preferences](#)

[Legal disclaimer](#)

[Accessibility statement](#)

[Privacy policy](#)

[Price transparency](#)

[Public notices](#)

© 2024 Memorial Sloan Kettering Cancer Center

