

Ready to start planning your care? Call us at [800-525-2225](tel:800-525-2225) to make an appointment.

×



Memorial Sloan Kettering
Cancer Center

[Make an Appointment](#)

[Back](#)

[Leadership](#)

[Refer a Patient](#)

ABOUT US

[Our mission, vision & core values](#)

[Leadership](#)

[History](#)

[Equality, diversity & inclusion](#)

[Annual report](#)

[Give to MSK](#)

[Selwyn M.
Vickers](#)

President and CEO,
Memorial Sloan Kettering
Cancer Center

[Shelly
Anderson](#)

Hospital President

[Debra Berns](#)

Senior Vice President and
Chief Risk Officer

[Sir Murray F.
Brennan](#)

Benno C. Schmidt Chair of
Clinical Oncology;
Chairman Emeritus,
Department of Surgery



[Carol
Brown](#)

Senior Vice President and
Chief Health Equity Officer



[Lisa M. DeAngelis](#)

Chief Physician Executive;
Scott M. and Lisa G. Stuart
Chair



[Rémy Evard](#)

Chief Digital Officer and
Head of Technology



[Tracy Gosselin](#)

PhD, RN, FAAN, Senior
Vice President and Chief
Nursing Executive; Enid A.
Haupt Chair in Nursing



[Michael P.
Harrington](#)

Executive Vice President
and Chief Financial Officer



[Jason Klein](#)

Senior Vice President and
Chief Investment Officer



[Jorge Lopez, Jr.](#)

Executive Vice President &
General Counsel



[LaKisha Mack](#)

Chief Administrative
Officer



[Kenneth
Manotti](#)

Senior Vice President and
Chief Development Officer



[Joan Massagué](#)

Chief Scientific Officer;
Director, Sloan Kettering
Institute



[Erin McDonough](#)

Executive Vice President
and Chief Marketing and
Communication Officer



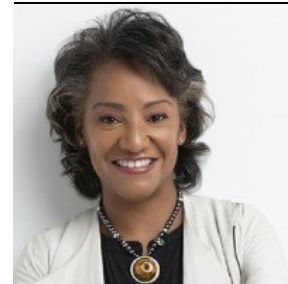
[Larry Norton](#)

Senior Vice President,
Office of the President;
Medical Director, Evelyn
H. Lauder Breast Center;
Norna S. Sarofim Chair in
Clinical Oncology



[Anaeze Offodile](#)

[II](#)
Chief Strategy Officer



[Tomya
Watt](#)

Interim Chief Human
Resources Officer

NEXT

[Program and Department Chairs](#)

Connect

[Contact us](#)

[Locations](#)

APPOINTMENTS

[800-525-2225](#)



▾ About MSK

[About us](#)

[Careers](#) ■

[Giving](#) ■

▾ Cancer Care

[Adult cancer types](#)

[Child & teen cancer types](#)

[Integrative medicine](#)

[Nutrition & cancer](#)

[Find a doctor](#)

▾ Research & Education

[Sloan Kettering Institute](#)

[Gerstner Sloan Kettering Graduate School](#) ■

[Graduate medical education](#)

[MSK Library](#) ■

[Communication preferences](#)

[Cookie preferences](#)

[Legal disclaimer](#)

[Accessibility statement](#)

[Privacy policy](#)

[Price transparency](#)

[Public notices](#)

© 2024 Memorial Sloan Kettering Cancer Center