

Ready to start planning your care? Call us at [800-525-2225](tel:800-525-2225) to make an appointment.

×



Memorial Sloan Kettering  
Cancer Center

[Make an Appointment](#)

[← Back](#)

## Cell Metabolism

[Patient & Caregiver Resources & Treatment](#)

[Refer a Patient](#)

### ABOUT US

[Our mission, vision & core values](#)

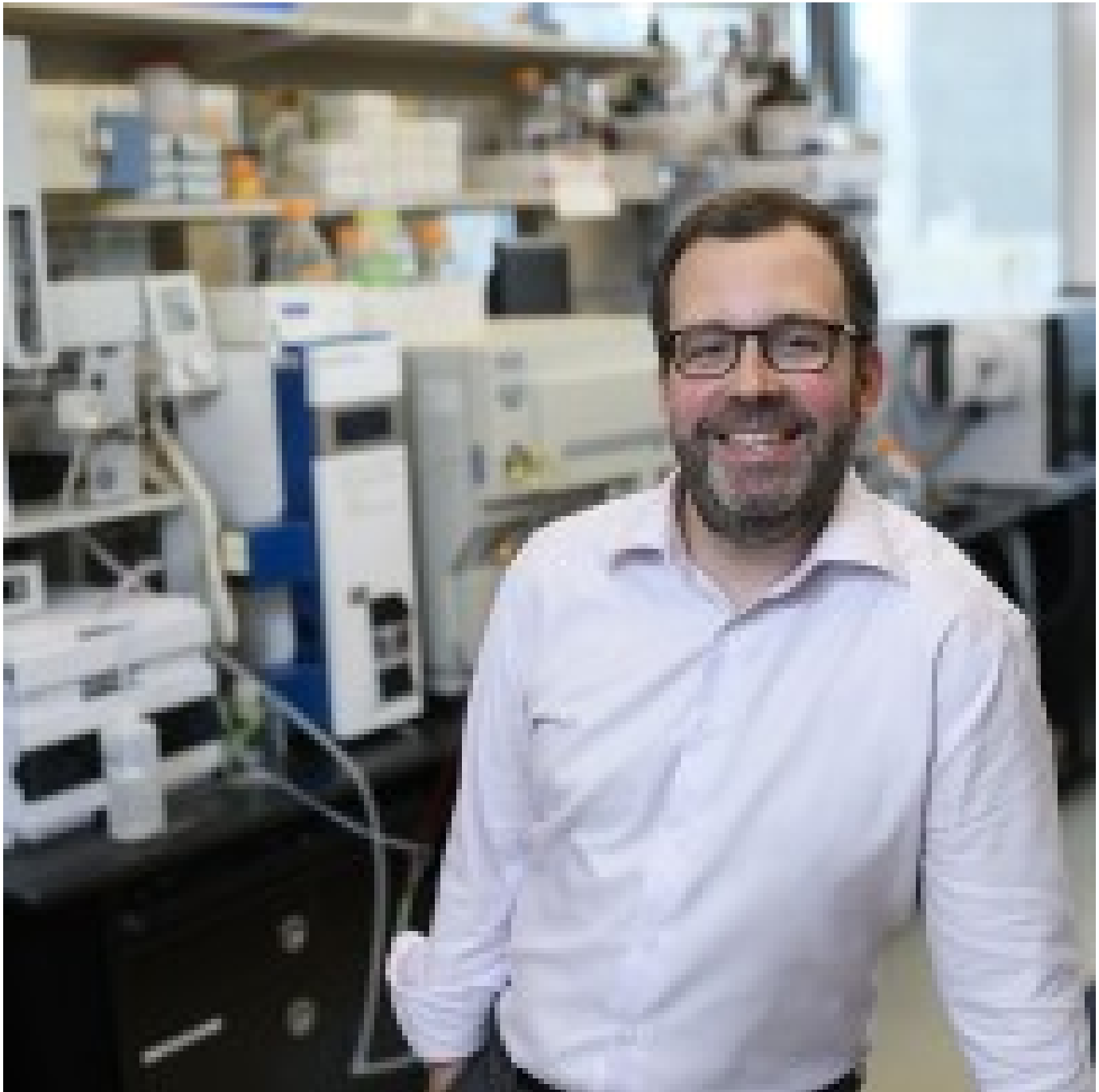
[Leadership](#)

[History](#)

[Equality, diversity & inclusion](#)

[Annual report](#)

[Give to MSK](#)



Justin Cross  
Director

---

The Cell Metabolism core is part of the Donald B. and Catherine C. Marron Cancer Metabolism Center and helps investigators characterize biological systems through the direct measurement of the small molecule constituents. Our primary areas of focus are cancer cell metabolism and understanding the host / gut microbiome interaction.

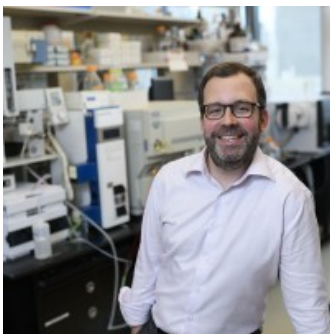
We use a range of complementary GC-MS and LC-MS analytical platforms and help investigators conduct studies from the experimental design stage, through data acquisition, data analysis and interpretation. We also provide access to non-MS technologies for measurement of nutrient and oxygen consumption.

[View More](#) →



Members of the Donald B. and Catherine C. Marron Cancer Metabolism Center

## People

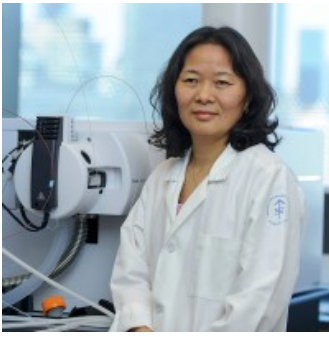


Justin Cross

Director

## Members

Cell Metabolism



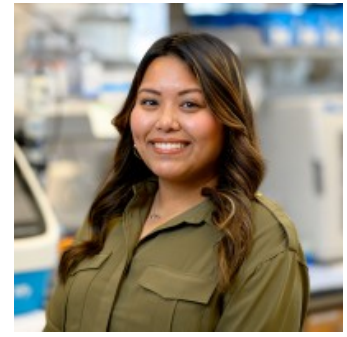
Hui Liu  
Senior Research Scientist



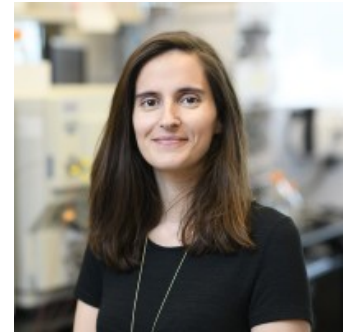
Charlotte Pohl  
Research Technician



Ruben Jose Jesus  
Faustino Ramos  
Senior Research Assistant



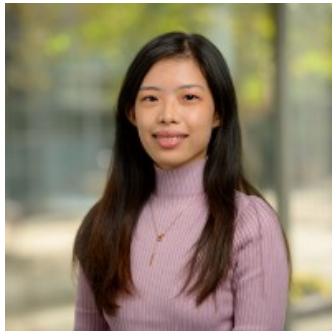
Michelle Saoi  
Metabolomics Specialist I



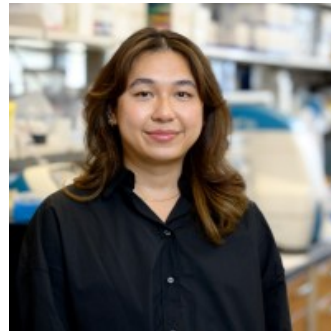
Sara Nunes  
Violante  
Senior Research Scientist



Tolulope Banjo  
Research Technician



Aye Kyaw  
Research Technician



Ritchie  
Ly  
Metabolomics Specialist I



Clementina Strozek  
Research Technician

Alumni  
+

## Open Positions

To learn more about available postdoctoral opportunities, please visit our [Career Center](#)

---

## Job Opportunities

The Donald B. and Catherine C. Marron Cancer Metabolism Center welcomes applications from highly motivated individuals with a proven track record LC-MS and strong interest in metabolic characterization of biological systems.

[Apply now](#) →

## Get in Touch

✉ [crossj@mskcc.org](mailto:crossj@mskcc.org)

Director Email

### ▼ Connect

[Contact us](#)

[Locations](#)

APPOINTMENTS

[800-525-2225](#)



### ▼ About MSK

[About us](#)

[Careers](#) ■

[Giving](#) ■

### ▼ Cancer Care

[Adult cancer types](#)

[Child & teen cancer types](#)

[Integrative medicine](#)

[Nutrition & cancer](#)

[Find a doctor](#)

### ▼ Research & Education

[Sloan Kettering Institute](#)

[Gerstner Sloan Kettering Graduate School](#) ■

[Graduate medical education](#)

[Communication preferences](#)

[Cookie preferences](#)

[Legal disclaimer](#)

[Accessibility statement](#)

[Privacy policy](#)

[Price transparency](#)

[Public notices](#)

© 2024 Memorial Sloan Kettering Cancer Center