

Ready to start planning your care? Call us at [800-525-2225](tel:800-525-2225) to make an appointment.

×



Memorial Sloan Kettering  
Cancer Center

[Make an Appointment](#)

[← Back](#)

## Flow Cytometry Core Facility

[Patient & Caregiver Resources](#)

[Refer a Patient](#)

### ABOUT US

[Our mission, vision & core values](#)

[Leadership](#)

[History](#)

[Equality, diversity & inclusion](#)

[Annual report](#)

[Give to MSK](#)

-----



Rui Gardner  
Director

---

The aim of the Flow Cytometry Core Facility at MSKCC is to provide advanced instrumentation as well as high-level technical and scientific expertise in multi-dimensional Flow Cytometry and Cell Sorting, to facilitate science, improve the quality, and advance the scope of MSK research.

For more information, follow the link below to the core facility's website.

[FCCF website](#)

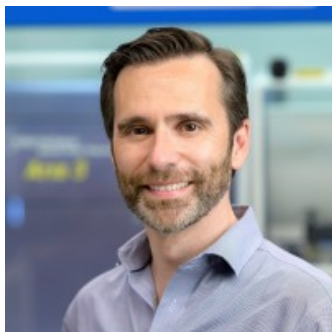
Interested in Panel Design? [Click here](#) & we will contact you!

VIDEO | 03:56

Go inside MSK's Flow Cytometry Lab

[Video Details](#) →

## People



Rui  
Gardner  
Director

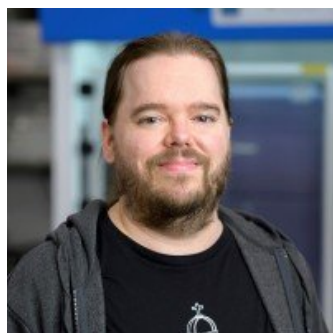
## Members



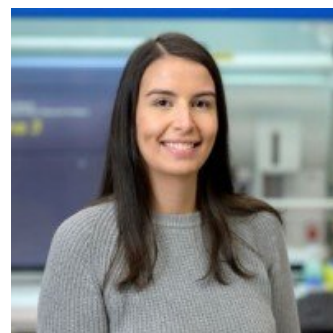
Emily Sonzogni  
Admin



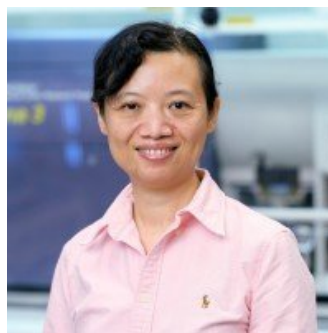
Ana Leda Figueiredo  
Longhini  
Scientific Research Lead



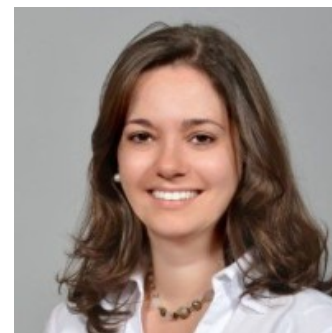
Mark Kweens  
Core Operations Manager



Barbara Oliveira  
Coordinator



Fang  
Fang  
Coordinator



Clara  
Cavalcanti  
Specialist



Gustavo Yepes  
Specialist



Magdalena Parys  
Specialist



Payalben Modi  
Specialist

## Get in Touch

✉ [gardnerr@mskcc.org](mailto:gardnerr@mskcc.org)

Director Email

✉ [fccf@mskcc.org](mailto:fccf@mskcc.org)

Director Email

☎ [+1 \(646\) 888 2369](tel:+16468882369)

Office Phone

☎ [+1 \(646\) 888 2381](tel:+16468882381)

Core Facility Phone

✕ [\\_ Twitter](#)

[in](#) [LinkedIn](#)

[You Tube](#) [\\_ YouTube](#)

## ▼ Connect

[Contact us](#)

[Locations](#)

[APPOINTMENTS](#)

[800-525-2225](#)



## ▼ About MSK

[About us](#)

[Careers](#) 

[Giving](#) 

## ▼ Cancer Care

[Adult cancer types](#)

[Child & teen cancer types](#)

[Integrative medicine](#)

[Nutrition & cancer](#)

[Find a doctor](#)

## ▼ Research & Education

[Sloan Kettering Institute](#)

[Gerstner Sloan Kettering Graduate School](#) 

[Graduate medical education](#)

[MSK Library](#) 

---

[Communication preferences](#)

[Cookie preferences](#)

[Legal disclaimer](#)

[Accessibility statement](#)

[Privacy policy](#)

[Price transparency](#)

[Public notices](#)

© 2024 Memorial Sloan Kettering Cancer Center

