

Ready to start planning your care? Call us at [800-525-2225](tel:800-525-2225) to make an appointment.

×



Memorial Sloan Kettering
Cancer Center

[Make an Appointment](#)

[Back](#)

Genetically Modified Animal (GMA) Phenotyping

[Refer a Patient](#)

ABOUT US

[Our mission, vision & core values](#)

[Leadership](#)

[History](#)

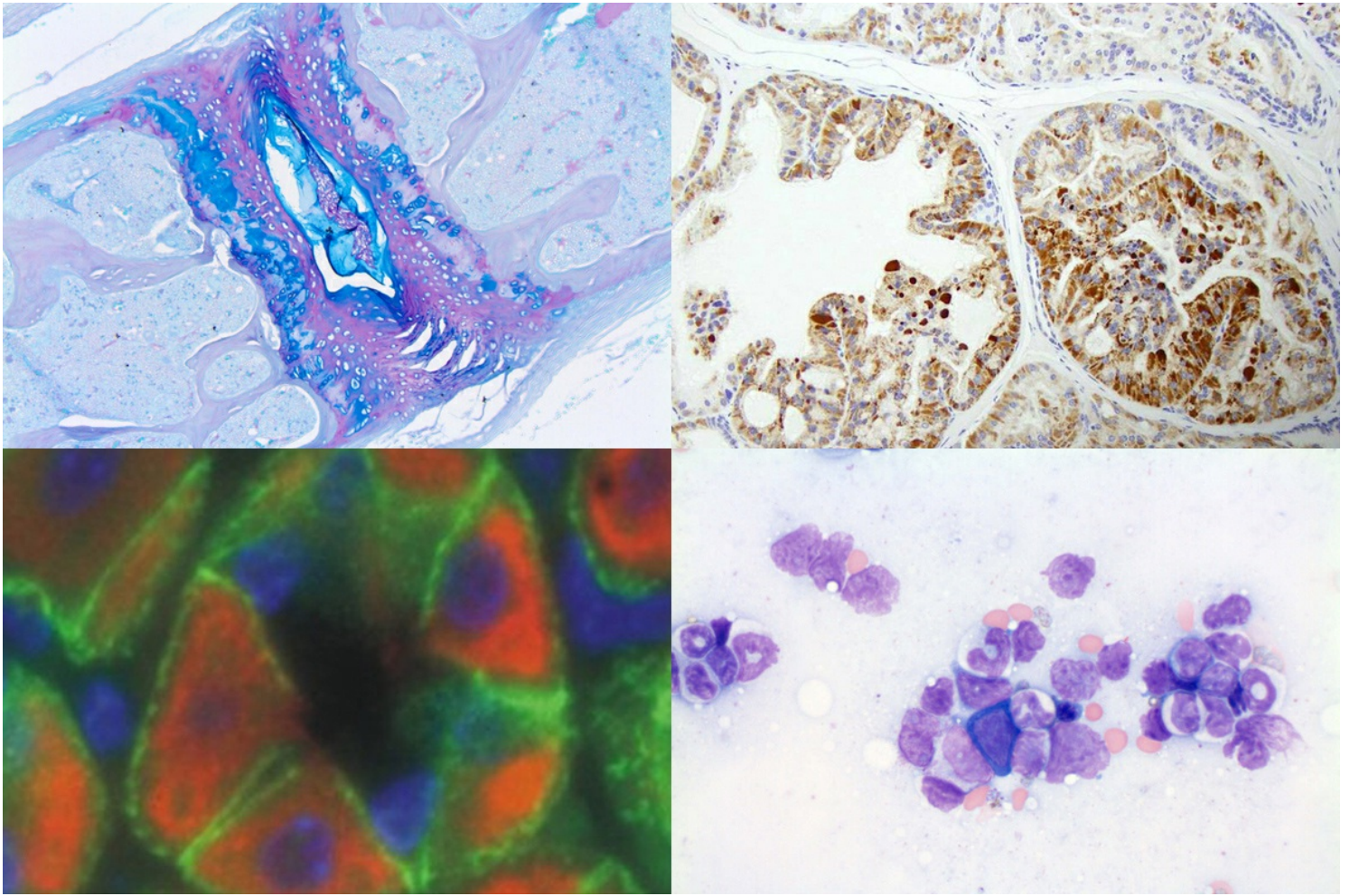
[Equality, diversity & inclusion](#)

[Annual report](#)

[Give to MSK](#)

Memorial Sloan Kettering Cancer Center, The Rockefeller University, and the Weill Medical College of Cornell University by providing an extensive baseline phenotypic profile of genetically modified animals. Such a comprehensive baseline characterization will be invaluable to investigators unfamiliar with normal anatomy, histology, physiology, and age- or strain-related background lesions. Furthermore, evaluating the entire animal, as opposed to a specific tissue or organ system, will help to identify unanticipated phenotypic changes.

[View More](#) →



Alcian blue/PAS and IHC; Bottom row, from left: IF and Wright-Giemsa

People

Sébastien Monette

Director

Get in Touch

✉ lcp@mskcc.org

Director Email

☎ [646-888-2422](tel:646-888-2422)

Office Phone

[Communication preferences](#)

[Cookie preferences](#)

[Legal disclaimer](#)

[Accessibility statement](#)

[Privacy policy](#)

[Price transparency](#)

[Public notices](#)

© 2024 Memorial Sloan Kettering Cancer Center