

Ready to start planning your care? Call us at [800-525-2225](tel:800-525-2225) to make an appointment.

×



Memorial Sloan Kettering  
Cancer Center

[Make an Appointment](#)

[← Back](#)

[Patient & Caregiver Resources & Treatment](#)

[Refer a Patient](#)

## Genetically Modified Animal (GMA) Phenotyping

### ABOUT US

[Our mission, vision & core values](#)

[Leadership](#)

[History](#)

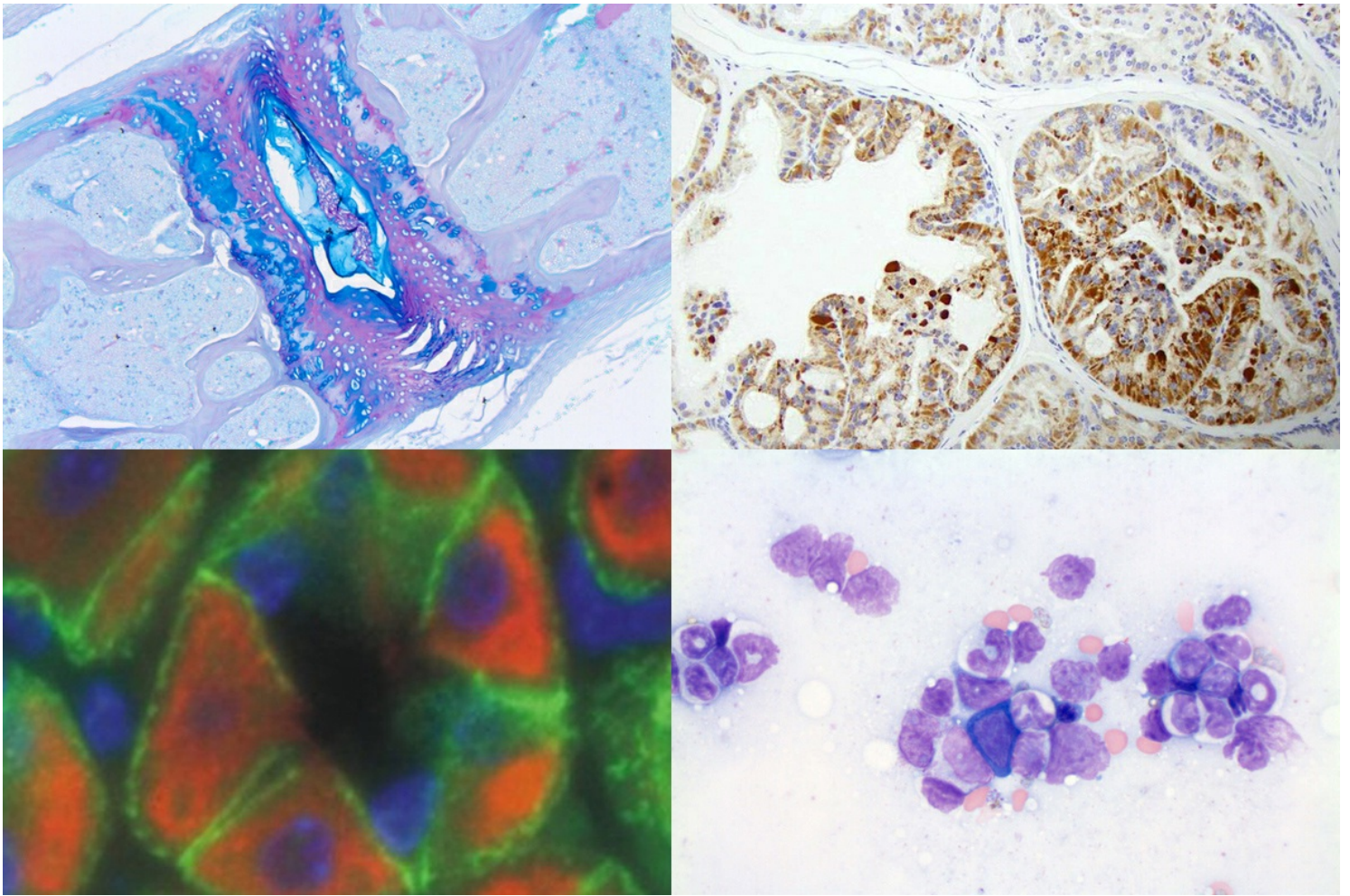
[Equality, diversity & inclusion](#)

[Annual report](#)

[Give to MSK](#)

Kettering Cancer Center, The Rockefeller University, and the Weill Medical College of Cornell University by providing an extensive baseline phenotypic profile of genetically modified animals. Such a comprehensive baseline characterization will be invaluable to investigators unfamiliar with normal anatomy, histology, physiology, and age- or strain-related background lesions. Furthermore, evaluating the entire animal, as opposed to a specific tissue or organ system, will help to identify unanticipated phenotypic changes.

[View More](#) →



Alcian blue/PAS and IHC; Bottom row, from left: IF and Wright-Giemsa

## People

Sébastien Monette  
Director

## Get in Touch

✉ [lcp@mskcc.org](mailto:lcp@mskcc.org)  
Director Email

☎ [646-888-2422](tel:646-888-2422)  
Office Phone

▾ Connect

[Contact us](#)

[Locations](#)

APPOINTMENTS

[800-525-2225](#)



## ▼ About MSK

[About us](#)

[Careers](#) 

[Giving](#) 

## ▼ Cancer Care

[Adult cancer types](#)

[Child & teen cancer types](#)

[Integrative medicine](#)

[Nutrition & cancer](#)

[Find a doctor](#)

## ▼ Research & Education

[Sloan Kettering Institute](#)

[Gerstner Sloan Kettering Graduate School](#) 

[Graduate medical education](#)

[MSK Library](#) 

---

[Communication preferences](#)

[Cookie preferences](#)

[Legal disclaimer](#)

[Accessibility statement](#)

[Privacy policy](#)

[Price transparency](#)

[Public notices](#)

© 2024 Memorial Sloan Kettering Cancer Center