

Ready to start planning your care? Call us at [800-525-2225](tel:800-525-2225) to make an appointment.

×



Memorial Sloan Kettering
Cancer Center

[Make an Appointment](#)

[← Back](#)

[Patient & Caregiver Resources](#)

[Refer a Patient](#)

Immune Monitoring

ABOUT US

[Our mission, vision & core values](#)

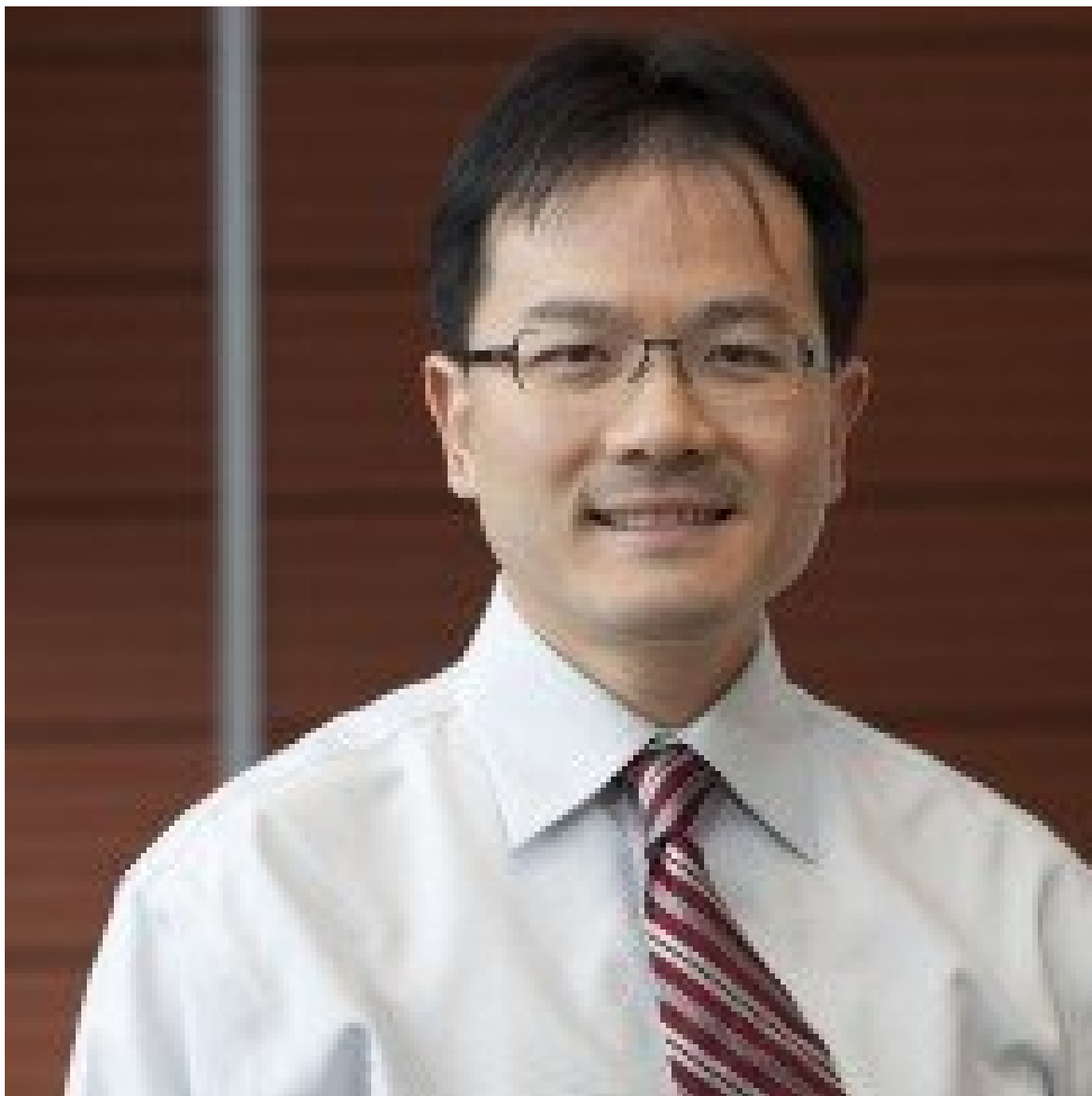
[Leadership](#)

[History](#)

[Equality, diversity & inclusion](#)

[Annual report](#)

[Give to MSK](#)



Phillip Wong
Director

The Immune Monitoring Facility, which is part of the [Ludwig Center for Cancer Immunotherapy](#), is dedicated to providing laboratory services and translational research to support immune monitoring during cancer immunotherapy. Robust immune monitoring assays are essential for characterizing the immune status in patients receiving novel immune-modulating therapies, and the insights gained from studying the immune response in treated patients may help transition promising therapies from the clinical trial phase to standard of care.

[View More](#) →

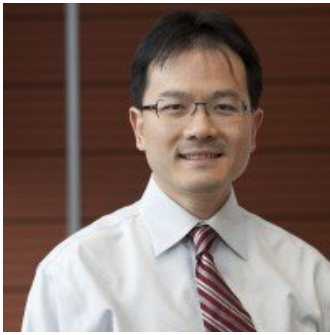




<

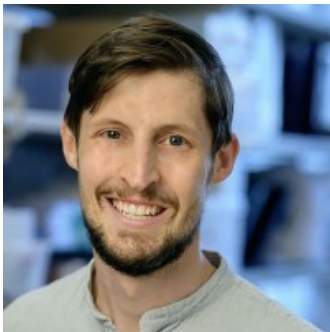
>

People

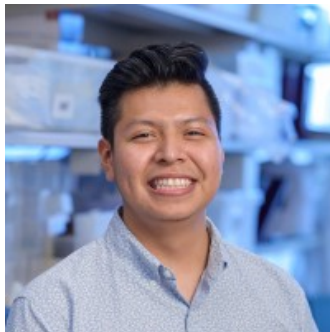


Phillip Wong
Director

Members



Matthew
Adamow
Technical Research
Specialist

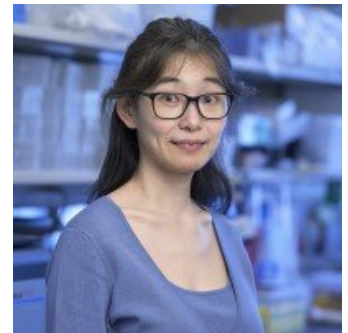


Steven Almazan-
Herrera
Research Technician



Swathi Merugu
Senior Research Scientist

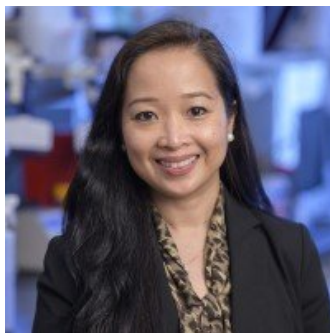
Zhenyu Mu
Senior Research Assistant



Anne Mui
Administrative Coordinator

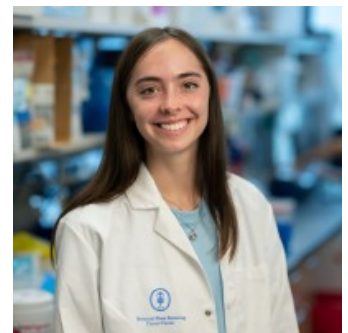


Rosemarie
Ramsawak
Research Assistant



Teresa
Rasalan
Laboratory Manager

Erika Ritter
Senior Research Assistant



Brooke
Wierciszewski
Research Technician

Lilian De Oliveira
Coser
Research Assistant

Get in Touch

 wongp@mskcc.org

Director Email

 [646-888-3157 \(General Inquiries\); 646-888-3514 \(Phillip Wong\)](tel:646-888-3157)

Office Phone

 [646-888-3106](tel:646-888-3106)

Core Facility Phone

▼ Connect

[Contact us](#)

[Locations](#)

APPOINTMENTS

[800-525-2225](#)



▼ About MSK

[About us](#)

[Careers](#) 

[Giving](#) 

▼ Cancer Care

[Adult cancer types](#)

[Child & teen cancer types](#)

[Integrative medicine](#)

[Nutrition & cancer](#)

[Find a doctor](#)

▼ Research & Education

[Sloan Kettering Institute](#)

[Gerstner Sloan Kettering Graduate School](#) 

[Graduate medical education](#)

[MSK Library](#) 

[Communication preferences](#)

[Cookie preferences](#)

[Legal disclaimer](#)

[Accessibility statement](#)

[Privacy policy](#)

[Price transparency](#)

[Public notices](#)

© 2024 Memorial Sloan Kettering Cancer Center