

Ready to start planning your care? Call us at [800-525-2225](tel:800-525-2225) to make an appointment.

×



Memorial Sloan Kettering
Cancer Center

[Make an Appointment](#)

[Back](#)

[Molecular Cytology](#)

[Solid Tumor Oncology & Treatment](#)

[Refer a Patient](#)

■ ◐ ■■

ABOUT US

[Our mission, vision & core values](#)

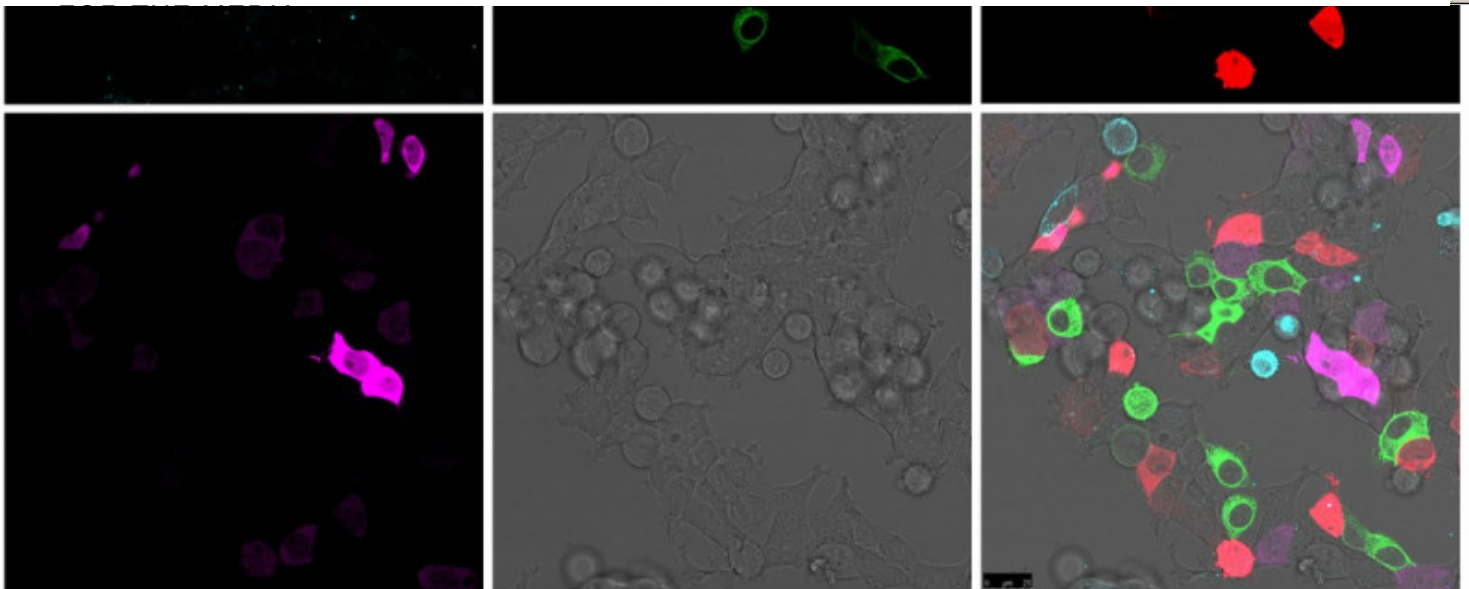
[Leadership](#)

[History](#)

[Equality, diversity & inclusion](#)

[Annual report](#)

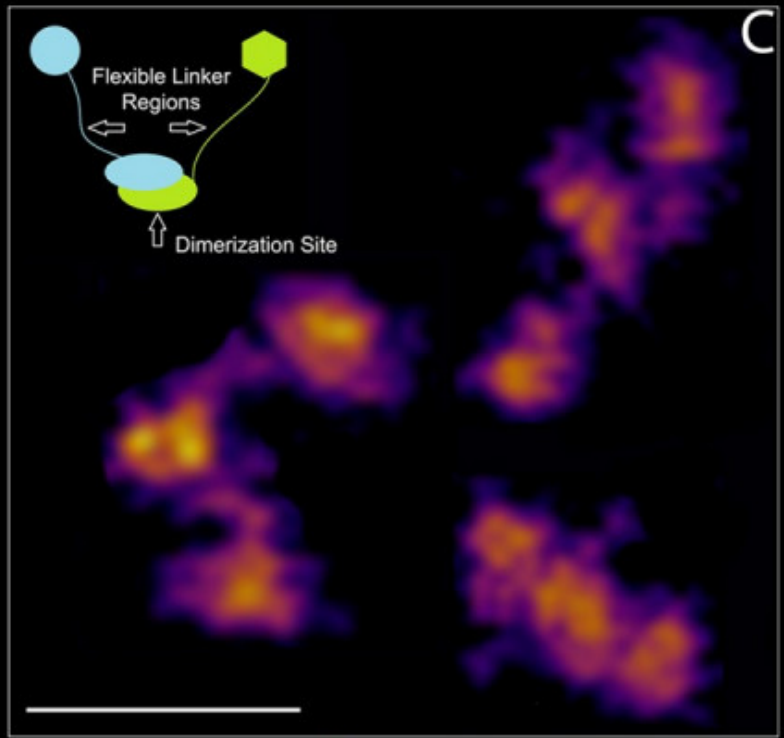
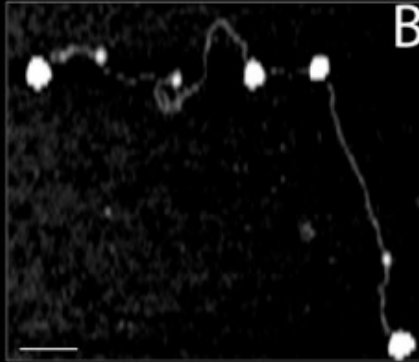
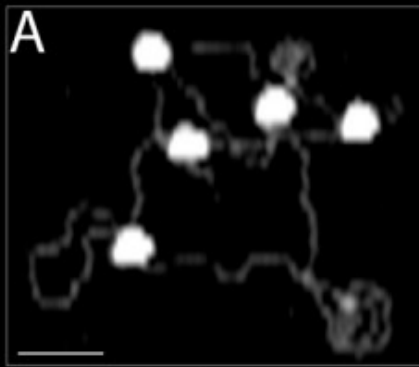
[Give to MSK](#)



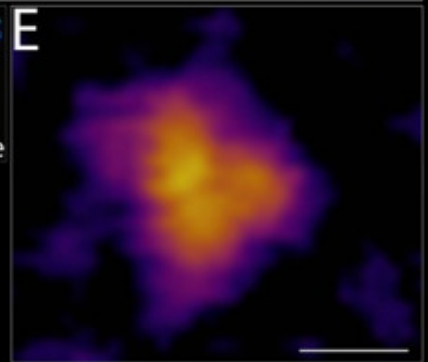
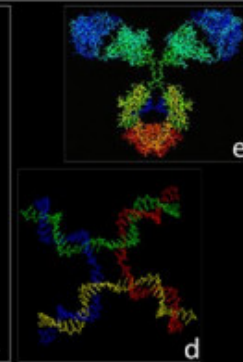
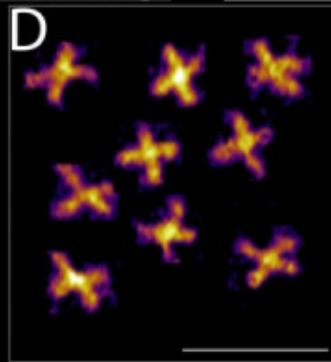
Four-color live imaging with fluorescent proteins ([mTurquoise](#), [GFP](#), [dTomato](#), [Turbo F635](#)) and brightfield

Courtesy of Jason Lee, Ponomarev Lab

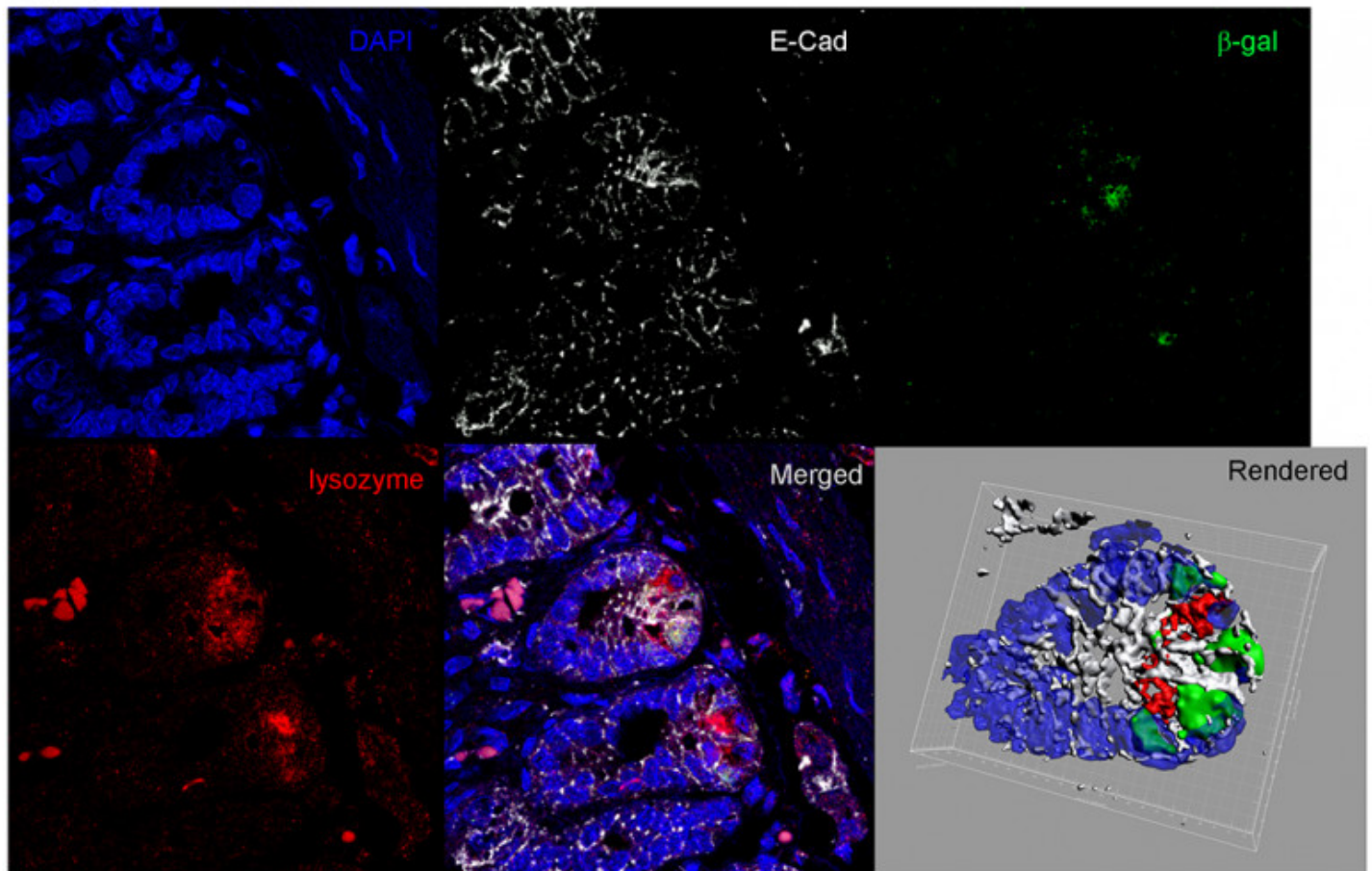
MCCF ATOMIC FORCE MICROSCOPY



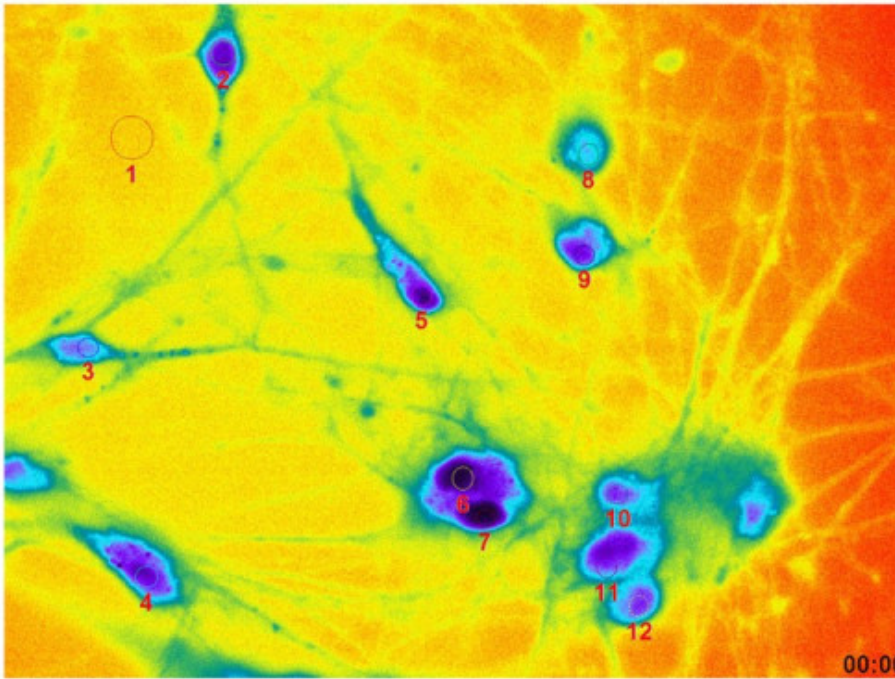
- A: 1.2 MDa DNA-Binding Protein.
- B: 1.2 MDa & 400 kDa Protein on DNA.
- C: DNA-Binding Heterodimer.
- D: Holiday Junction, 40bp legs.
- d: Holiday Junction Molecular Model.
- E: Mouse IgG Antibody.
- e: Mouse IgG Molecular Model.



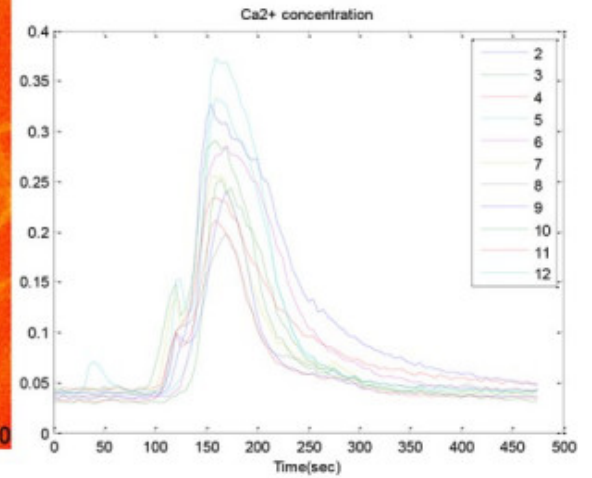
Crypt: β -gal A488, lysozyme A568, E-Cad A633



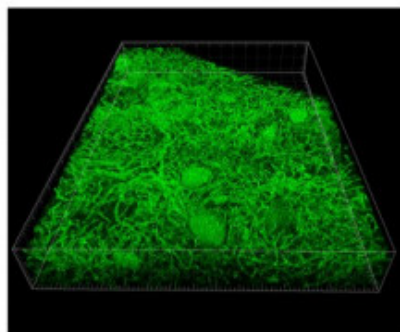
Ca²⁺ Imaging



- ❖ Human ES cell derived Dopamine neurons
- about 90 days old
- ❖ FURA-2 AM, (Invitrogen)
- Ratio-metric dye for Ca²⁺ Imaging
- ❖ Temperature controlled perfusion system

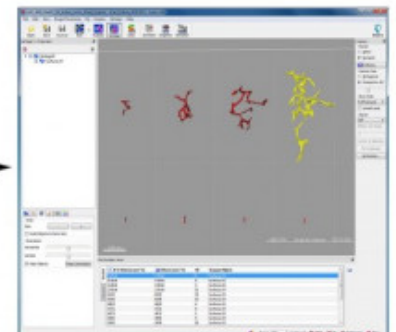
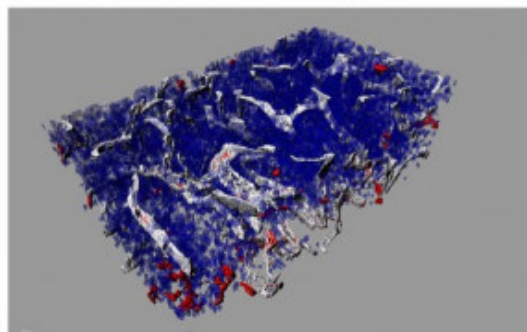
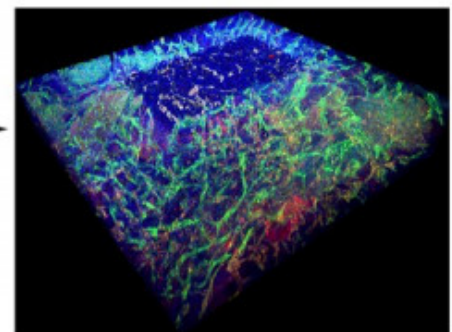
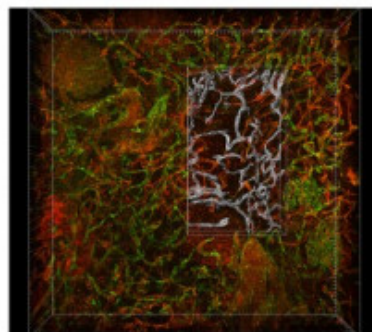


Courtesy of Julius Steinbeck, MD from Studer Lab.



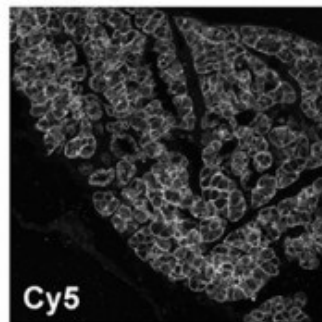
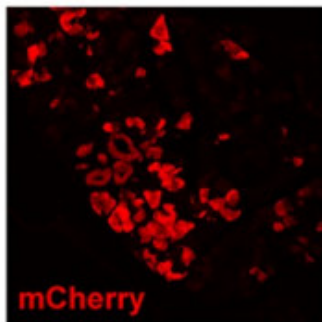
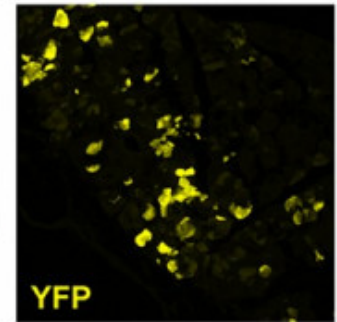
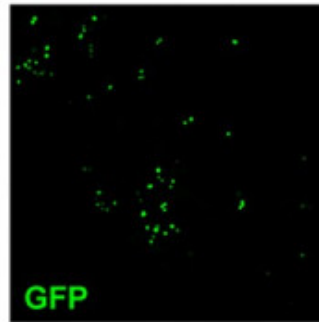
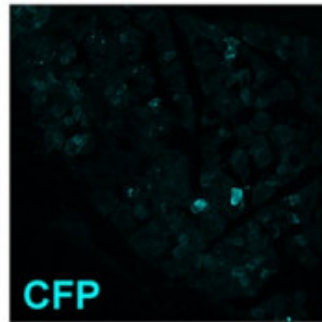
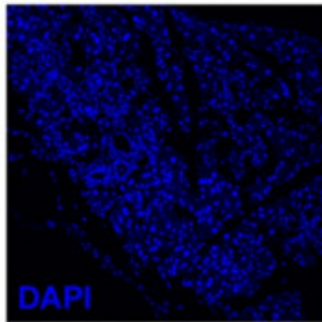
300 Micron Kidney Gelatin Section
Confocal Z-Stack

3D Rendering and
Analysis with Imaris Software

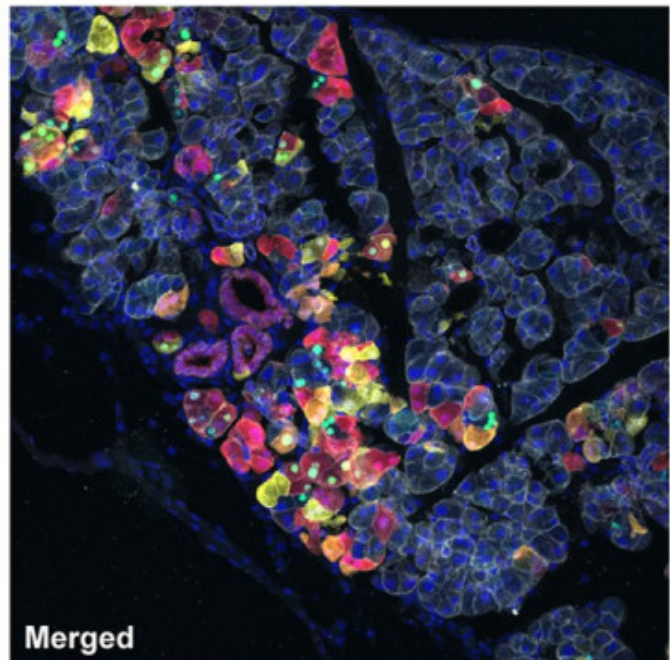


CD31 (green), pMAPK (red) and DAPI (blue)

Confocal Multi-color fixed and live imaging with White Light Laser Technology

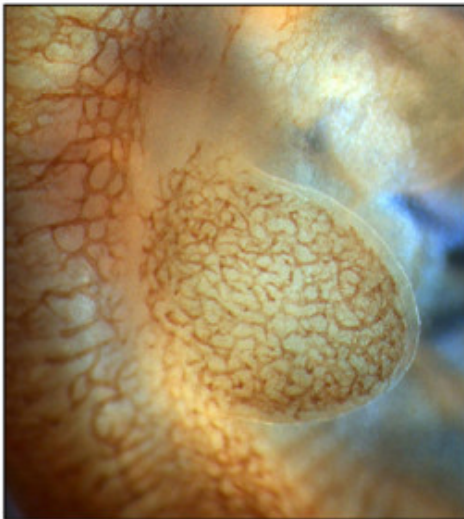
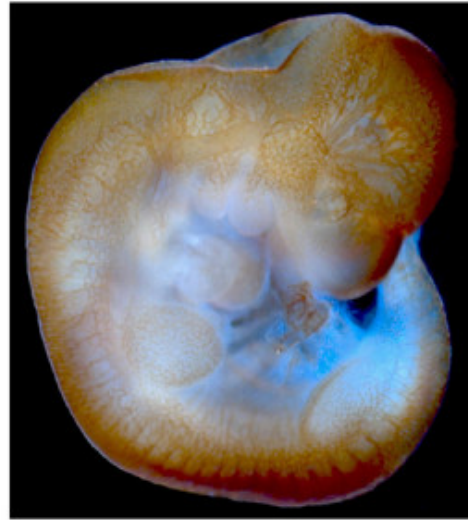


Confetti staining, pancreas section

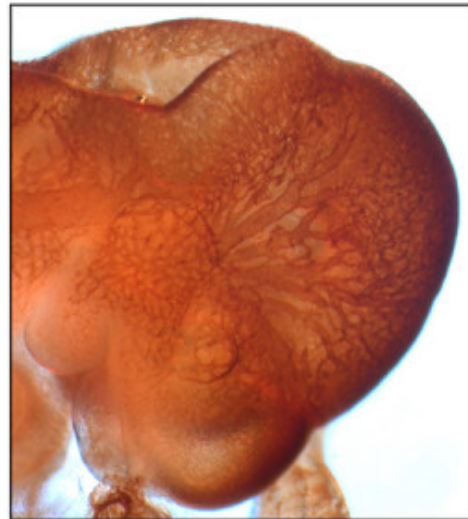


Courtesy of Kelly Lafaro, Leach lab

Mouse Embryo E13.5, CD31 IHC



Forelimb

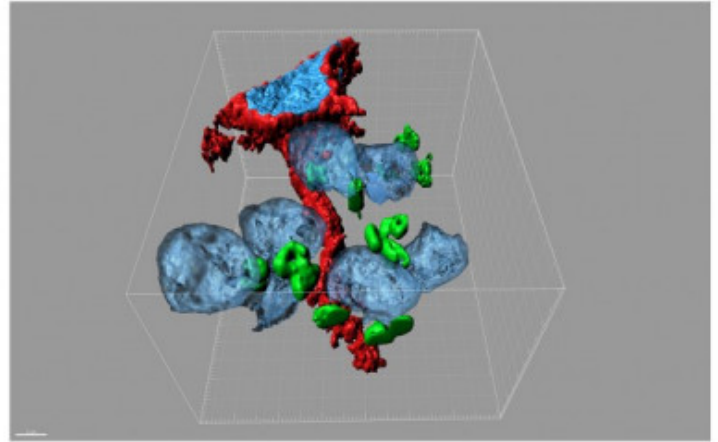
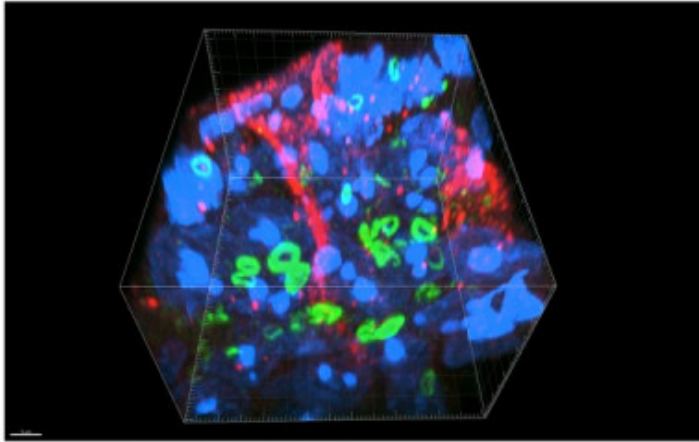


Head

Imaged by Molecular Cytology Core Facility at MSKCC

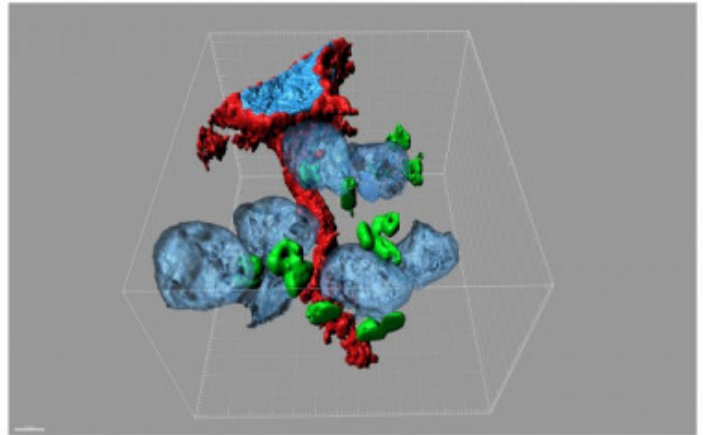
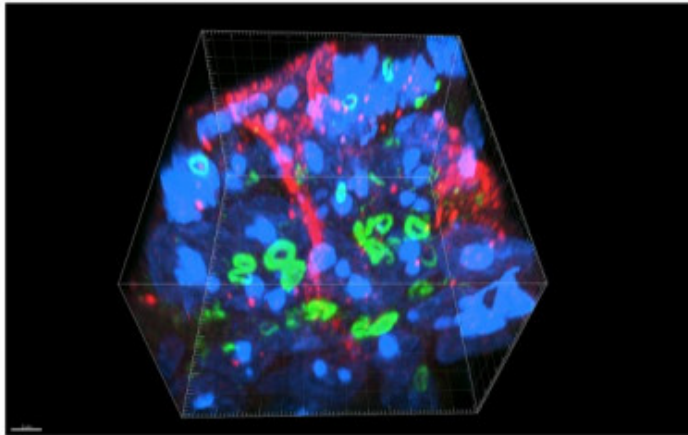
Segmentation and Volumetric Analysis using Imaris Software

Blue - DAPI (nuclei), Green - TEX14 (cytosolic bridges), Red - Vimentin (Sertoli Cell cytoplasm)

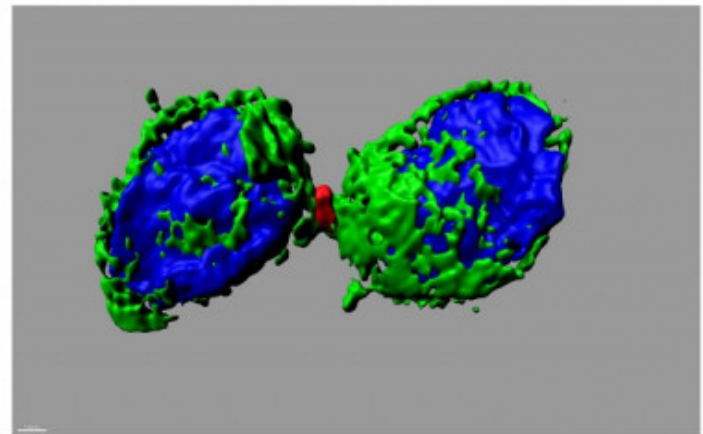
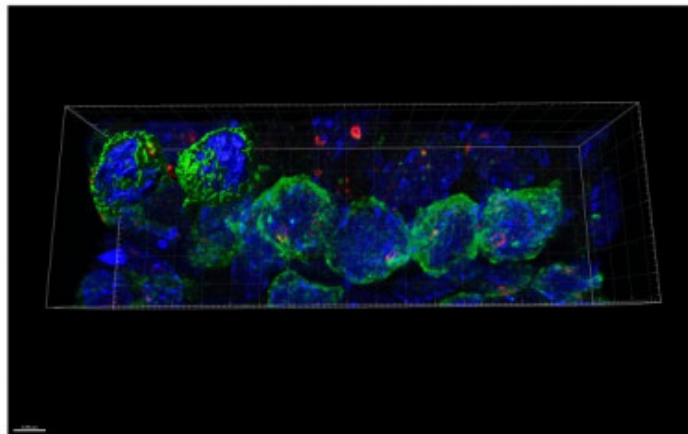


Segmentation and Volumetric Analysis using Imaris Software

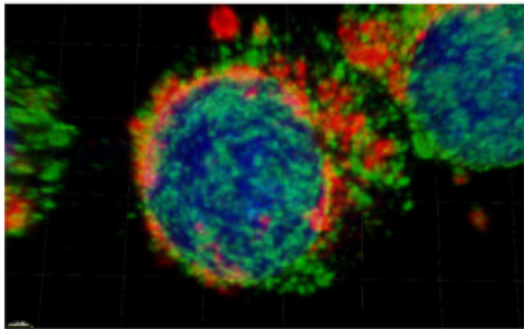
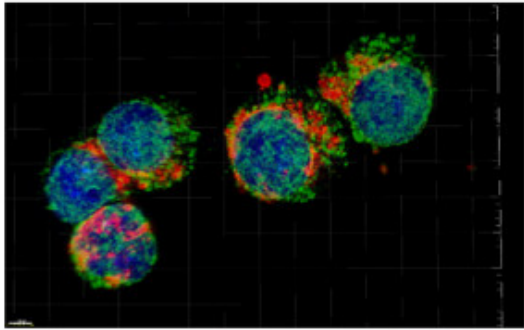
Blue - DAPI (nuclei), Green - TEX14 (cytosolic bridges), Red - Vimentin (Sertoli Cell cytoplasm)



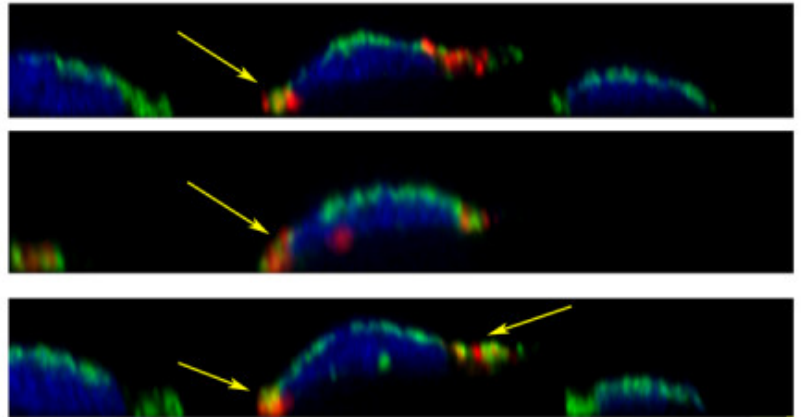
Blue - DAPI (nuclei), Red - TEX14 (cytosolic bridges), Green - FAK (Focal Adhesion Kinase), Testis Tissue



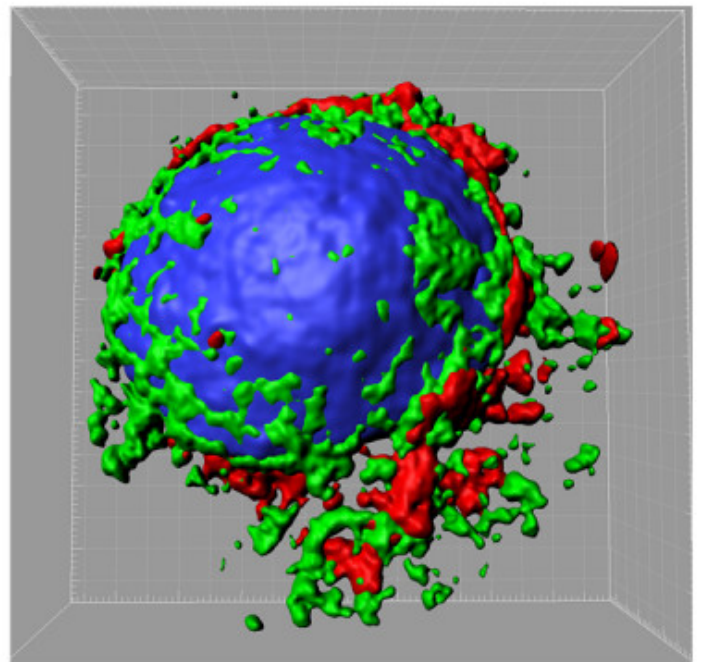
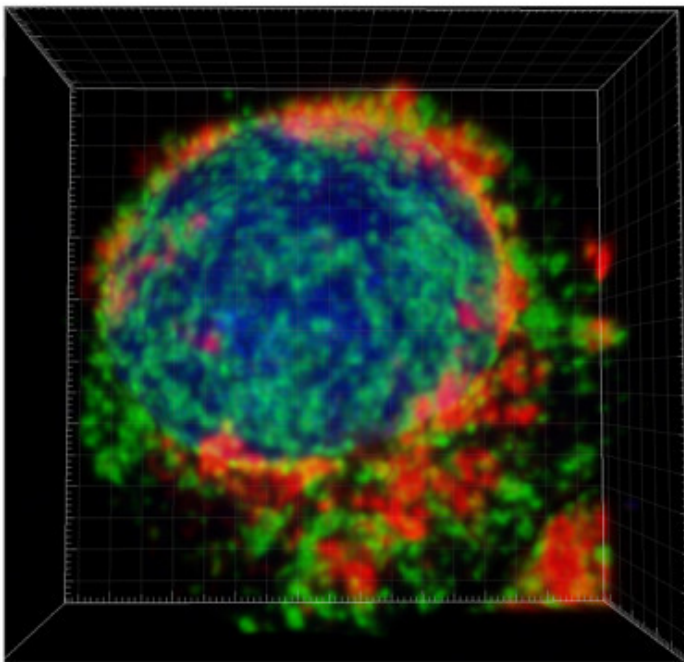
BCL2 (green) and Mitotracker (red) on SUDHL-4 cells



XZ sections, arrows indicating potential interactions



3d rendering and segmentation
using Imaris software



<

>

PREVIOUS

[Projects](#)

NEXT

[Imaging and Image Analysis](#)

[Communication preferences](#)

[Cookie preferences](#)

[Legal disclaimer](#)

[Accessibility statement](#)

[Privacy policy](#)

[Price transparency](#)

[Public notices](#)

© 2024 Memorial Sloan Kettering Cancer Center