

Ready to start planning your care? Call us at [800-525-2225](tel:800-525-2225) to make an appointment.

×



Memorial Sloan Kettering
Cancer Center

[Make an Appointment](#)

[← Back](#)

[Patient & Caregiver Resources](#)

[Refer a Patient](#)

Gene Editing & Screening

ABOUT US

[Our mission, vision & core values](#)

[Leadership](#)

[History](#)

[Equality, diversity & inclusion](#)

[Annual report](#)

[Give to MSK](#)



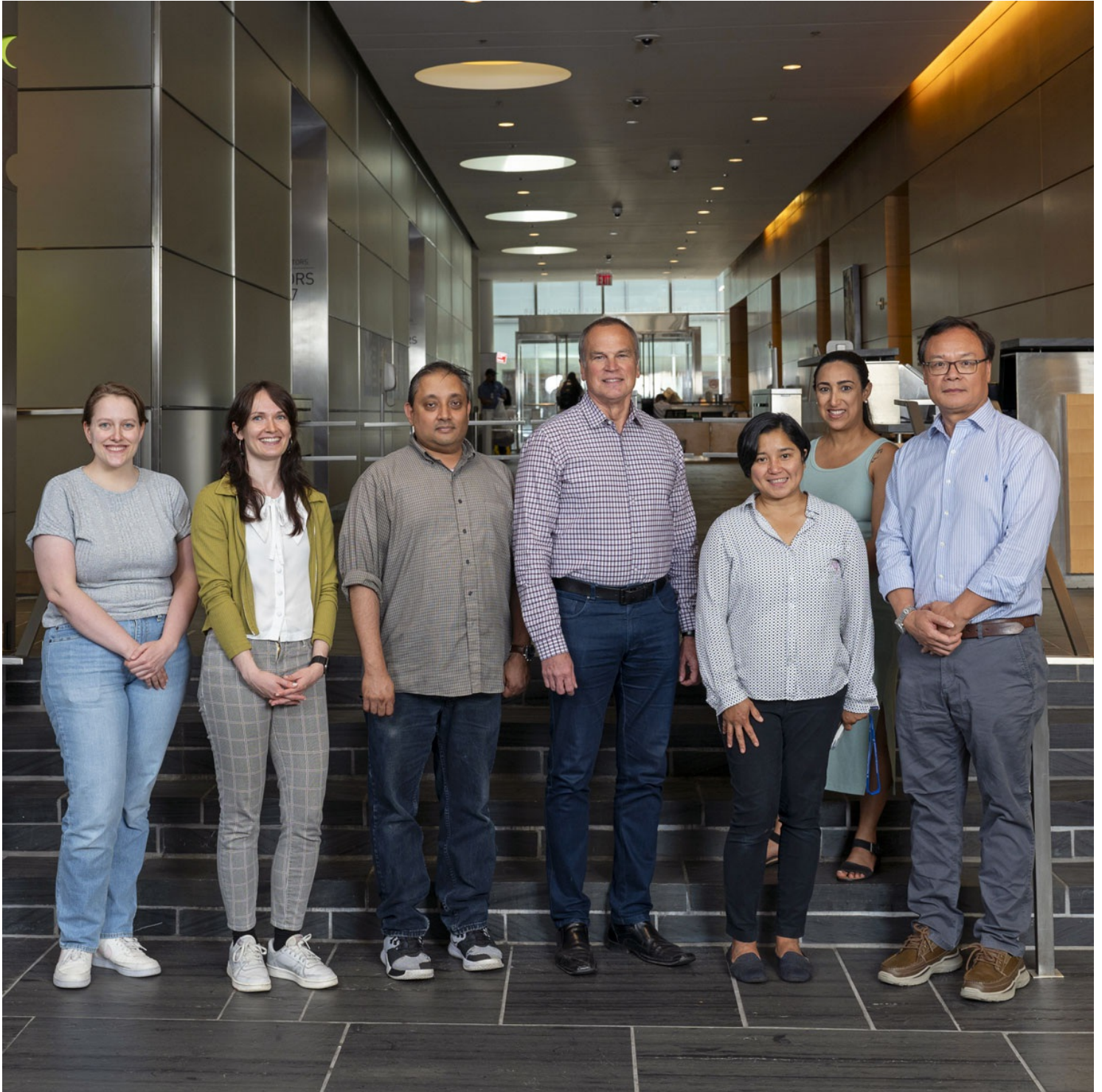
Ralph Garippa
Director

The Gene Editing & Screening Core Facility (GES Core) brings together complementary technologies aimed at interrogating cancer biology and identifying molecular vulnerabilities of cancer cells. The GES Core expertly enables all aspects of state-of-the-art technologies in RNA interference and CRISPR-Cas9 mediated gene editing for functional genomics initiatives.

In parallel, towards the identification of chemical probes which influence cancer phenotypes, the GES Core maintains and operates a workstation-based small molecule high throughput screening (HTS) facility using space- and cost-efficient approaches and a multi-pronged, targeted chemical library (I) for chemogenomic studies, (II) to phenocopy new molecular targets with pharmacological agents and (III) to enable *bona fide* chemical probe and early drug discovery in oncology. Moreover, considering

that the microscopy has provided the morphological underpinning to the study of cancer biology, therefore the GES Core offers state-of-the-art automated arrayed 2D/3D laser line confocal imaging using high content screening & analysis (HCS/HCA) tools.

[View More](#) →



People



Ralph Garippa

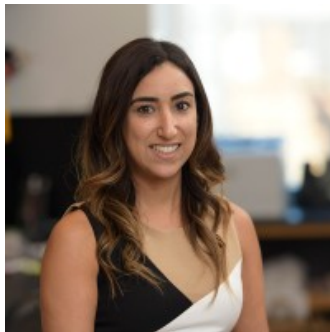
Director

Members



Jesse Barnes, Ph.D

Research Assistant



Ana Crawford

Lead Assistant



Clare Lewis

Senior Research Assistant



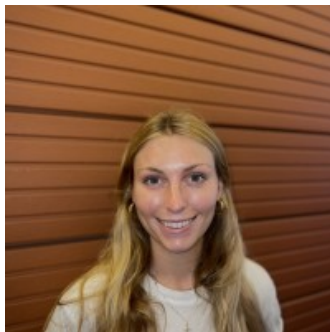
Anniefer Magpusao

Research Assistant



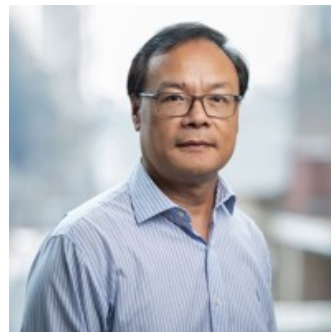
Sanjoy Mehta

Senior Research Assistant



Hannah Simandl

Senior Research
Technician



Jianmin Yang

Core Facility Manager

Alumni
+

Get in Touch

✉ garippar@mskcc.org

Director Email

 zzPDL_SKI_GES_Core@mskcc.org

Director Email

 [646-888-3339](tel:646-888-3339)

Office Phone

 [646-888-3347](tel:646-888-3347)

Office Fax

▼ Connect

[Contact us](#)

[Locations](#)

APPOINTMENTS

[800-525-2225](#)



▼ About MSK

[About us](#)

[Careers](#) 

[Giving](#) 

▼ Cancer Care

[Adult cancer types](#)

[Child & teen cancer types](#)

[Integrative medicine](#)

[Nutrition & cancer](#)

[Find a doctor](#)

▼ Research & Education

[Sloan Kettering Institute](#)

[Gerstner Sloan Kettering Graduate School](#) 

[Graduate medical education](#)

[MSK Library](#) 

[Communication preferences](#)

[Cookie preferences](#)

[Legal disclaimer](#)

[Accessibility statement](#)

[Privacy policy](#)

[Price transparency](#)

[Public notices](#)

© 2024 Memorial Sloan Kettering Cancer Center