

Ready to start planning your care? Call us at [800-525-2225](tel:800-525-2225) to make an appointment.

×



Memorial Sloan Kettering
Cancer Center

[Make an Appointment](#)

[Back](#)

Stem Cell Research

[Refer a Patient](#)

[Refer a Patient](#)

ABOUT US

[Our mission, vision & core values](#)

[Leadership](#)

[History](#)

[Equality, diversity & inclusion](#)

[Annual report](#)

[Give to MSK](#)



Ting Zhou
Director, Stem Cell Research Facility

The SKI Stem Cell Research Core stocks, characterizes, and distributes human pluripotent stem cell (hPSC) lines. We perform a variety of hPSC-related applications for the stem cell community at SKI and beyond. We are a part of the Starr Foundation-funded Tri-Institutional Stem Cell Initiative that provides shared stem cell expertise and resources among Memorial Sloan Kettering, Weill-Cornell, and Rockefeller University.

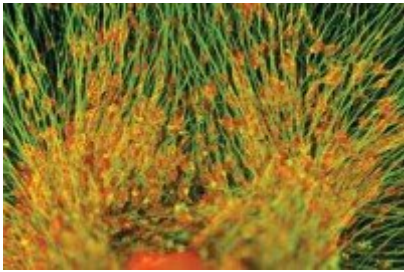
The Stem Cell Research Facility's web site

[Go](#)

Chrome and Firefox are the suggested browsers for this site.

[View More](#) →

Featured News



[New Center for Stem Cell Biology Launched](#)

Friday, April 1, 2011

A new center at the Sloan Kettering Institute is exploring the potential of embryonic stem cells and human adult cells to produce regenerative treatments and provide insights into cancer.

People



Ting

Zhou

Director, Stem Cell

Members

Bernny Ramirez

Research Technician



Mega Sidharta

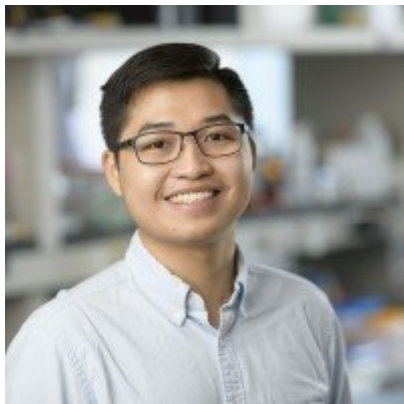
Senior Research
Technician



Youjun

Wu

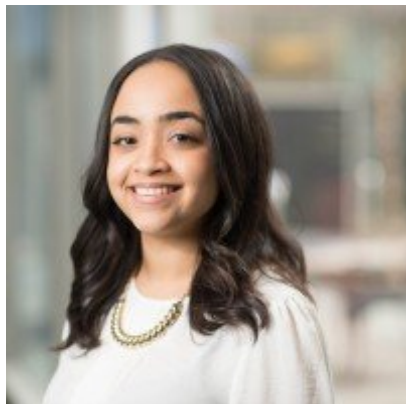
Senior Research Scientist



Aaron

Zhong

Research Assistant



Danaysy Frias

Administrative Assistant

Alumni

+

Open Positions

To learn more about available postdoctoral opportunities, please visit our [Career Center](#)

Job Opportunities

[Apply now](#) →

Get in Touch

✉ zhout@mskcc.org

Director Email

☎ [212-639-6571](tel:212-639-6571)

Office Phone

[Communication preferences](#)

[Cookie preferences](#)

[Legal disclaimer](#)

[Accessibility statement](#)

[Privacy policy](#)

[Price transparency](#)

[Public notices](#)

