

Ready to start planning your care? Call us at [800-525-2225](tel:800-525-2225) to make an appointment.

×



Memorial Sloan Kettering
Cancer Center

[Make an Appointment](#)

[← Back](#)

HUMAN ONCOLOGY & PATHOGENESIS PROGRAM

[Patient & Caregiver Support](#)

[Diagnosis & Treatment](#)

[Refer a Patient](#)

The Alan Hanash Lab

ABOUT US

[Our mission, vision & core values](#)

[Leadership](#)

[History](#)

[Equality, diversity & inclusion](#)

[Annual report](#)

[Give to MSK](#)



Alan M. Hanash, MD, PhD
Assistant Attending Physician

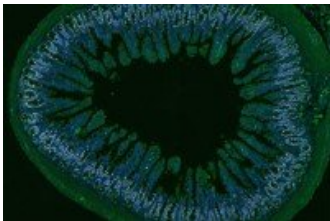
Alan Hanash is an Assistant Member of Memorial Sloan Kettering and an Attending Physician on the Adult Bone Marrow Transplant Service in the Department of Medicine. Dr. Hanash's research focuses on the immunology of hematopoietic transplantation and immune-mediated mechanisms of tissue damage and regeneration.

[View Lab Overview](#) →



Featured News

IN THE LAB



[Immune System Molecule Could Become New Treatment for Graft-Versus-Host Disease](#)

Scientists are using a molecule from the immune system to combat this serious complication in a new way.

Publications Highlights

[Lindemans CA*](#), [Calafiore M*](#), [Mertelsmann AM*](#), [O'Connor MH*](#), [Dudakov JA](#), [Jenq RR](#), [Velardi E](#), [Young LF](#), [Smith OM](#), [Lawrence G](#), [Ivanov JA](#), [Fu Y](#), [Takashima S](#), [Hua G](#), [Martin ML](#), [O'Rourke KP](#), [Lo Y](#), [Mokry M](#), [Romera-Hernandez M](#),

[Cupedo T, Dow L, Nieuwenhuis EE, Shroyer NF, Liu C, Kolesnick R, van den Brink MRM*, and Hanash AM*. Interleukin-22 Promotes Intestinal Stem Cell-Mediated Epithelial Regeneration. *Nature*. 2015 Dec 24;528\(7583\): 560-4.](#)

[Interleukin-22: immunobiology and pathology. Dudakov JA, Hanash AM, van den Brink MR. *Annu Rev Immunol*. 2015 Mar 21;33:747-85. doi: 10.1146/annurev-immunol-032414-112123. Epub 2015 Feb 11.](#)

Geiger TL, Abt MC, Gasteiger G, Firth M, O'Connor M, van den Brink MR, Pamer EG, Hanash AM*, Sun JC*. Nfil3 is crucial for development of innate lymphoid cells and host protection against intestinal pathogens. *J Exp Med*. 2014 Aug 25;211(9):1723-31.

[Hanash AM, Kappel LW, Yim NL, Nejat RA, Goldberg GL, Smith OM, Rao UK, Dykstra L, Na IK, Holland AM, Liu C, Murphy GF, Leonard WJ, Heller G, van den Brink MR. Abrogation of donor T cell IL-21 signaling leads to tissue-specific modulation of immunity and separation of GVHD from GVL. *Blood*. 2011 Jul 14;118\(2\):446-55.](#)

[Hanash AM. MataHari reveals secrets of GVHD. *Blood*. 2012 Apr 19;119\(16\):3656-7.](#)

[View All Publications](#)

People



Alan M. Hanash, MD, PhD

Assistant Attending Physician

Physician-scientist Alan Hanash studies transplant immunology and immune-mediated mechanisms of tissue damage and regeneration.

MD, University of Miami

✉ hanasha@mskcc.org

Email Address

🔗 [View physician profile](#)

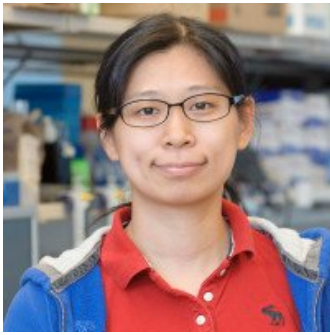
Physician profile

Members



Anastasiya Egorova

Senior Research
Technician



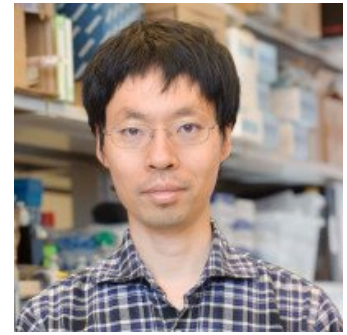
Ya-Yuan Fu
Postdoctoral Researcher



Takahiro Ito
Visiting Investigator



Jason Kuttigara
Research Technician



Shuichiro
Takashima
Research Fellow



Paola Vinci
Research Fellow

Lab Alumni
+

Lab Affiliations
+

Achievements

ASCI Young Physician-Scientist Award (2014)
Amy Strelzer Manasevit Research Program Scholar (2014)
ASH Outstanding Abstract Achievement Award for Anna Mertelsmann (2013)
ASH Scholar Award for Junior Faculty (2012)
ASBMT New Investigator Award (2011)

Get in Touch

✉ hanasha@mskcc.org

Lab Head Email

Disclosures

Doctors and faculty members often work with pharmaceutical, device, biotechnology, and life sciences companies, and other organizations outside of MSK, to find safe and effective cancer treatments, to improve patient care, and to educate the health care community.

MSK requires doctors and faculty members to report (“disclose”) the relationships and financial interests they have with external entities. As a commitment to transparency with our community, we make that information available to the public.

Alan M. Hanash discloses the following relationships and financial interests:

Evive Biotech

Professional Services and Activities (Uncompensated)

Generon (Shanghai) Corporation Ltd.

Professional Services and Activities (Uncompensated)

The information published here is for a specific annual disclosure period. There may be differences between information on this and other public sites as a result of different reporting periods and/or the various ways relationships and financial interests are categorized by organizations that publish such data.

This page and data include information for a specific MSK annual disclosure period (January 1, 2022 through disclosure submission in spring 2023). This data reflects interests that may or may not still exist. This data is updated annually.

Learn more about MSK’s COI policies [here](#). For questions regarding MSK’s COI-related policies and procedures, email MSK’s Compliance Office at ecoi@mskcc.org.

[View all disclosures](#) →

Connect

[Contact us](#)

[Locations](#)

APPOINTMENTS

[800-525-2225](#)





▼ About MSK

[About us](#)

[Careers](#) 

[Giving](#) 

▼ Cancer Care

[Adult cancer types](#)

[Child & teen cancer types](#)

[Integrative medicine](#)

[Nutrition & cancer](#)

[Find a doctor](#)

▼ Research & Education

[Sloan Kettering Institute](#)

[Gerstner Sloan Kettering Graduate School](#) 

[Graduate medical education](#)

[MSK Library](#) 

[Communication preferences](#)

[Cookie preferences](#)

[Legal disclaimer](#)

[Accessibility statement](#)

[Privacy policy](#)

[Price transparency](#)

[Public notices](#)

© 2024 Memorial Sloan Kettering Cancer Center