

Ready to start planning your care? Call us at [800-525-2225](tel:800-525-2225) to make an appointment.

×



Memorial Sloan Kettering  
Cancer Center

[Make an Appointment](#)

[← Back](#)

HUMAN ONCOLOGY & PATHOGENESIS PROGRAM

[Patient & Family Resources](#)

[Diagnosis & Treatment](#)

[Refer a Patient](#)

## The Charles Sawyers Lab

### ABOUT US

[Our mission, vision & core values](#)

[Leadership](#)

[History](#)

[Equality, diversity & inclusion](#)

[Annual report](#)

[Give to MSK](#)

-----



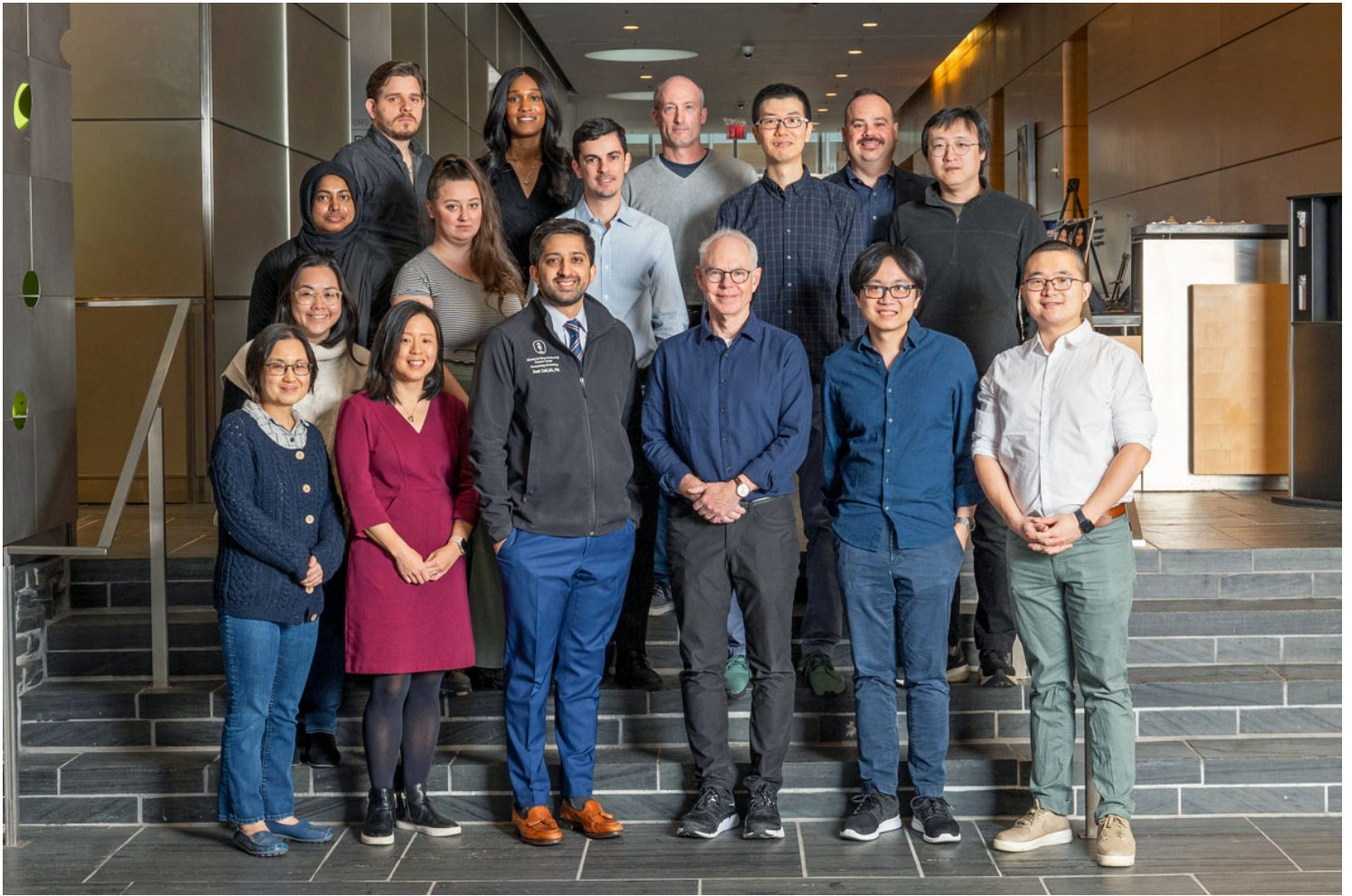
Charles L. Sawyers, MD

Investigator, Howard Hughes Medical Institute; Marie-Josée and Henry R. Kravis Chair in Human Oncology and Pathogenesis; Chair, Human Oncology and Pathogenesis Program

---

Dr. Sawyers is an HHMI Investigator searching for molecularly targeted approaches to treat cancer. He has identified cell signaling components critical to the growth of cancer cells in chronic myeloid leukemia, prostate and other cancers, resulting in the development of multiple FDA-approved inhibitors in clinical use today.

[View Lab Overview](#) →



## Featured News

### [Lineage plasticity in prostate cancer depends on JAK/STAT inflammatory signaling](#)

Resistance to molecularly targeted therapies is often due to mutations in the drug target, but there is growing recognition of other modes of tumor esc...



### [A New Approach in Prostate Cancer: Targeting the Cells Surrounding the Tumor](#)

Scientists have found a protein that empowers prostate tumors to resist hormone therapy.



## [MSK Experts Featured at the AACR Virtual Annual Meeting I](#)

Thousands of oncology experts from around the world will tune in April 27 and 28 for the American Association for Cancer Research's (AACR) virtual annual meeting I. The meeting is the first of two virtual sessions, with clinical trial plenary sessions, clinical trial poster sessions, several minisymposia, and more. The AACR virtual annual meeting II will be held June 22 through 24.

[View All Featured News](#)

## Publications Highlights

[Zhang Z, Karthaus WR, Lee YS, Gao VR, Wu C, Russo JW, Liu M, Mota JM, Abida W, Linton E, Lee E, Barnes SD, Chen HA, Mao N, Wongvipat J, Choi D, Chen X, Zhao H, Manova-Todorova K, de Stanchina E, Taplin ME, Balk SP, Rathkopf DE, Gopalan A, Carver BS, Mu P, Jiang X, Watson PA, Sawyers CL. Tumor Microenvironment-Derived NRG1 Promotes Antiandrogen Resistance in Prostate Cancer. \*Cancer Cell\*. 2020 Aug 10;38\(2\):279-296.e9. doi: 10.1016/j.ccell.2020.06.005. Epub 2020 Jul 16. PubMed Central PMCID: PMC7472556.](#)

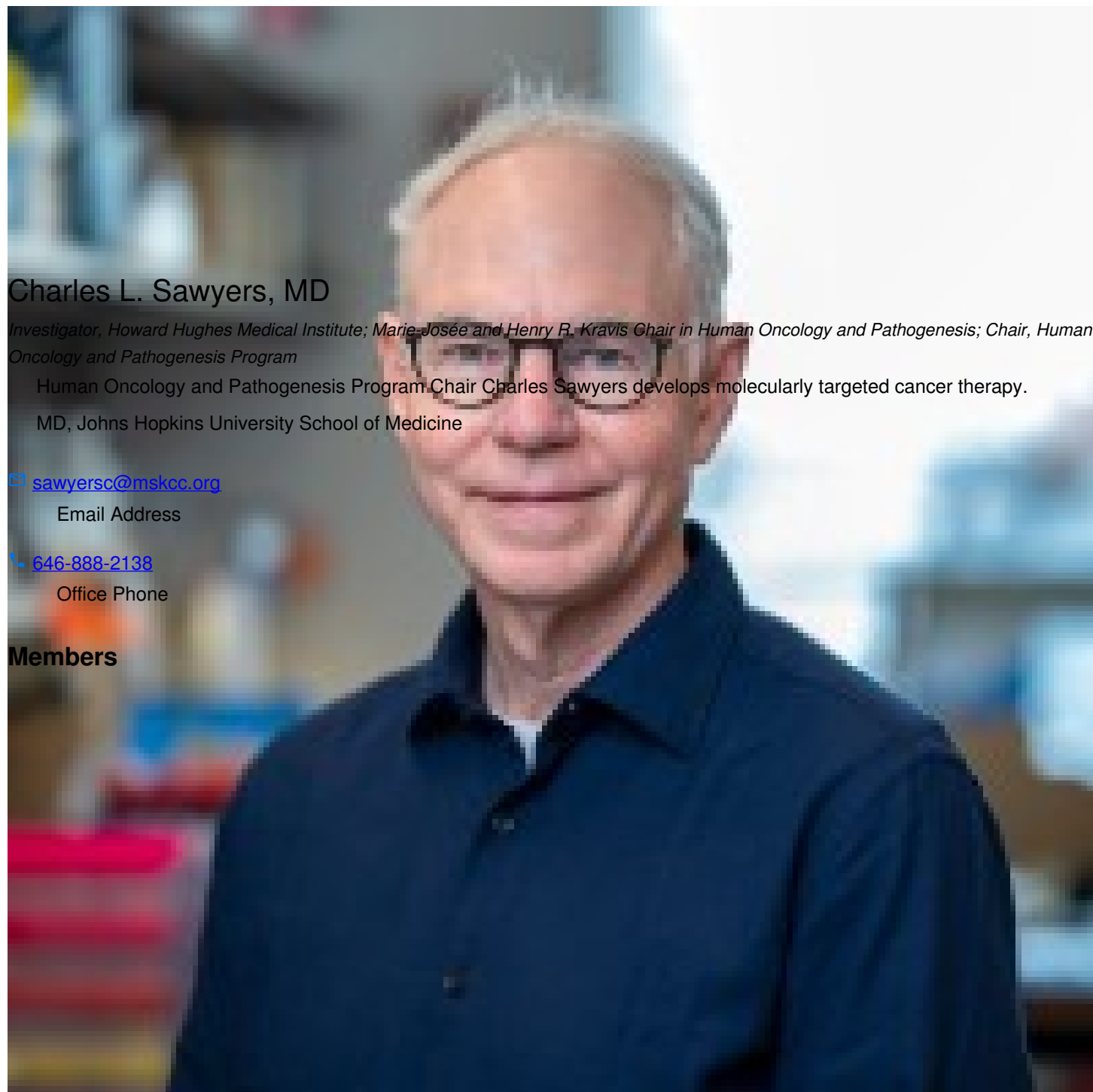
[Karthaus WR, Hofree M, Choi D, Linton EL, Turkekul M, Bejnood A, Carver B, Gopalan A, Abida W, Laudone V, Biton M, Chaudhary O, Xu T, Masilionis I, Manova K, Mazutis L, Pe'er D, Regev A, Sawyers CL. Regenerative potential of prostate luminal cells revealed by single-cell analysis. \*Science\*. 2020 May 1;368\(6490\):497-505. doi: 10.1126/science.aay0267. PubMed Central PMCID: PMC7313621.](#)

[Wasmuth EV, Hoover EA, Antar A, Klinge S, Chen Y, Sawyers CL. Modulation of androgen receptor DNA binding activity through direct interaction with the ETS transcription factor ERG. \*Proc Natl Acad Sci U S A\*. 2020 Apr 14;117\(15\):8584-8592. doi: 10.1073/pnas.1922159117. Epub 2020 Mar 27. PubMed Central PMCID: PMC7165421.](#)

[Zhang Z, Zhou C, Li X, Barnes SD, Deng S, Hoover E, Chen CC, Lee YS, Zhang Y, Wang C, Metang LA, Wu C, Tirado CR, Johnson NA, Wongvipat J, Navrazhina K, Cao Z, Choi D, Huang CH, Linton E, Chen X, Liang Y, Mason CE, de Stanchina E, Abida W, Lujambio A, Li S, Lowe SW, Mendell JT, Malladi VS, Sawyers CL, Mu P. Loss of CHD1 Promotes Heterogeneous Mechanisms of Resistance to AR-Targeted Therapy via Chromatin Dysregulation. \*Cancer Cell\*. 2020 Apr 13;37\(4\):584-598.e11. doi: 10.1016/j.ccell.2020.03.001. Epub 2020 Mar 26. PubMed Central PMCID: PMC7292228.](#)

[Adams EJ, Karthaus WR, Hoover E, Liu D, Gruet A, Zhang Z, Cho H, DiLoreto R, Chhangawala S, Liu Y, Watson PA, Davicioni E, Sboner A, Barbieri CE, Bose R, Leslie CS, Sawyers CL. FOXA1 mutations alter pioneering activity, differentiation and prostate cancer phenotypes. \*Nature\*. 2019 Jul;571\(7765\):408-412. doi: 10.1038/s41586-019-1318-9. Epub 2019 Jun 26. PubMed Central PMCID: PMC6661172.](#)

## People



### Charles L. Sawyers, MD

*Investigator, Howard Hughes Medical Institute; Marie-Josée and Henry R. Kravis Chair in Human Oncology and Pathogenesis; Chair, Human Oncology and Pathogenesis Program*

Human Oncology and Pathogenesis Program Chair Charles Sawyers develops molecularly targeted cancer therapy.

MD, Johns Hopkins University School of Medicine

✉ [sawyersc@mskcc.org](mailto:sawyersc@mskcc.org)

Email Address

☎ [646-888-2138](tel:646-888-2138)

Office Phone

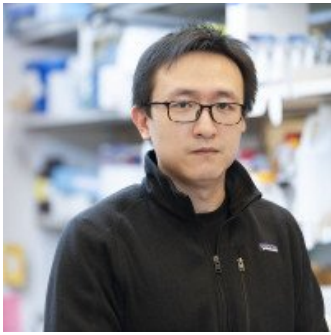
## Members

Zhendong

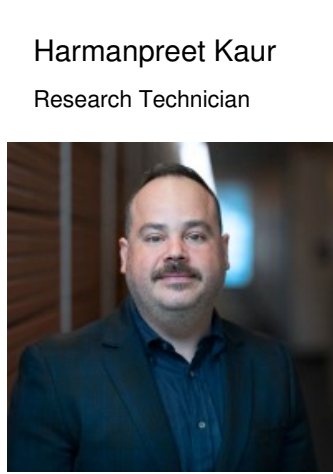
Cao

Research Fellow

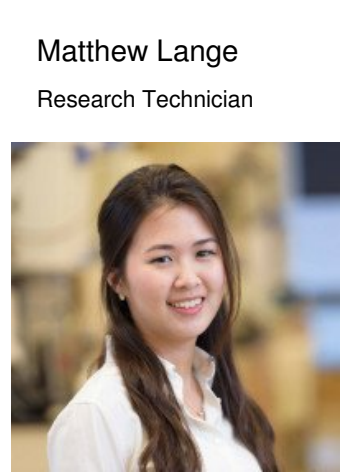




Daniel ( Henry)  
Kates  
Research Technician



Harmanpreet Kaur  
Research Technician

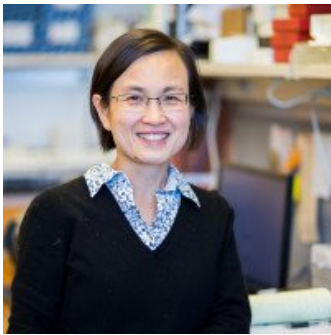


Matthew Lange  
Research Technician

Teng  
Han  
Research Fellow

Jye  
Lawson  
Assistant to Chairman

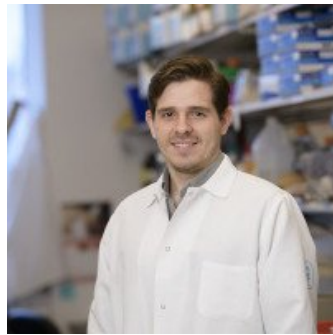
Young Sun  
Lee  
MD-PhD Candidate



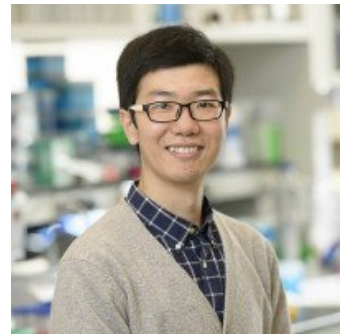
Ninghui Mao  
Senior Research Assistant



Kyrie Pappas  
Research Fellow



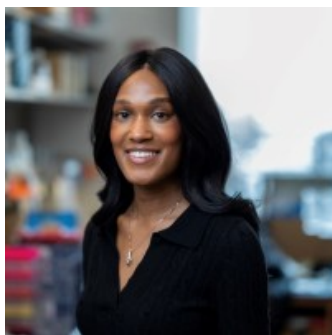
Rodrigo Romero  
Research Fellow



Zhen Sun  
Postdoctoral Fellow



Marie Will  
Assistant Attending



Serina  
Young  
MSKCC Bridge Program  
Scholar



Samir Zaidi  
Fellow

Lab Alumni  
+

Lab Affiliations

+

## Achievements

NCI Alfred G. Knudson Award in Cancer Genetics (2020)

STAT Biomedical Innovation Award (2019)

AACR Princess Takamatsu Memorial Lectureship and Award (2019)

The Scheele Award, Swedish Academy of Pharmaceutical Sciences (2017)

American Cancer Society Medal of Honor (2017)

Read more

+

## Get in Touch

✉ [sawyersc@mskcc.org](mailto:sawyersc@mskcc.org)

Lab Head Email

☎ [646-888-2138](tel:646-888-2138)

Office Phone

☎ [646-888-3407](tel:646-888-3407)

Office Fax

☎ [646-888-3462](tel:646-888-3462)

## Disclosures

Doctors and faculty members often work with pharmaceutical, device, biotechnology, and life sciences companies, and other organizations outside of MSK, to find safe and effective cancer treatments, to improve patient care, and to educate the health care community.

MSK requires doctors and faculty members to report (“disclose”) the relationships and financial interests they have with external entities. As a commitment to transparency with our community, we make that information available to the public.

Charles L. Sawyers discloses the following relationships and financial interests:

Arsenal IO Canada Parent, Inc.

Equity; Professional Services and Activities

BeiGene, Ltd.

Equity; Professional Services and Activities

Blueprint Medicines

Equity; Professional Services and Activities

Column Group

Equity; Professional Services and Activities

Diaprost AB

Intellectual Property Rights

Foghorn Therapeutics

Equity; Professional Services and Activities

Housey Pharmaceutical

Equity; Professional Services and Activities

KSQ Therapeutics

Equity; Professional Services and Activities

Nextech Venture, LTD

Equity; Professional Services and Activities

Novartis

Equity; Fiduciary Role / Position

Oric Pharmaceuticals

Equity; Intellectual Property Rights; Professional Services and Activities

PMV Pharma

Equity; Professional Services and Activities

The information published here is for a specific annual disclosure period. There may be differences between information on this and other public sites as a result of different reporting periods and/or the various ways relationships and financial interests are categorized by organizations that publish such data.

---

This page and data include information for a specific MSK annual disclosure period (January 1, 2022 through disclosure submission in spring 2023). This data reflects interests that may or may not still exist. This data is updated annually.

Learn more about MSK's COI policies [here](#). For questions regarding MSK's COI-related policies and procedures, email MSK's Compliance Office at [ecoi@mskcc.org](mailto:ecoi@mskcc.org).

[View all disclosures](#) →

## Connect

[Contact us](#)

[Locations](#)

APPOINTMENTS

[800-525-2225](#)







## ▼ About MSK

[About us](#)

[Careers](#) 

[Giving](#) 

## ▼ Cancer Care

[Adult cancer types](#)

[Child & teen cancer types](#)

[Integrative medicine](#)

[Nutrition & cancer](#)

[Find a doctor](#)

## ▼ Research & Education

[Sloan Kettering Institute](#)

[Gerstner Sloan Kettering Graduate School](#) 

[Graduate medical education](#)

[MSK Library](#) 

---

[Communication preferences](#)

[Cookie preferences](#)

[Legal disclaimer](#)

[Accessibility statement](#)

[Privacy policy](#)

[Price transparency](#)

[Public notices](#)

© 2024 Memorial Sloan Kettering Cancer Center