

Ready to start planning your care? Call us at [800-525-2225](tel:800-525-2225) to make an appointment.

×



Memorial Sloan Kettering  
Cancer Center

[Make an Appointment](#)

[← Back](#)

HUMAN ONCOLOGY & PATHOGENESIS PROGRAM

[Patient & Caregiver Support](#)

[Diagnosis & Treatment](#)

## The David Solit Lab

[Refer a Patient](#)

### ABOUT US

[Our mission, vision & core values](#)

[Leadership](#)

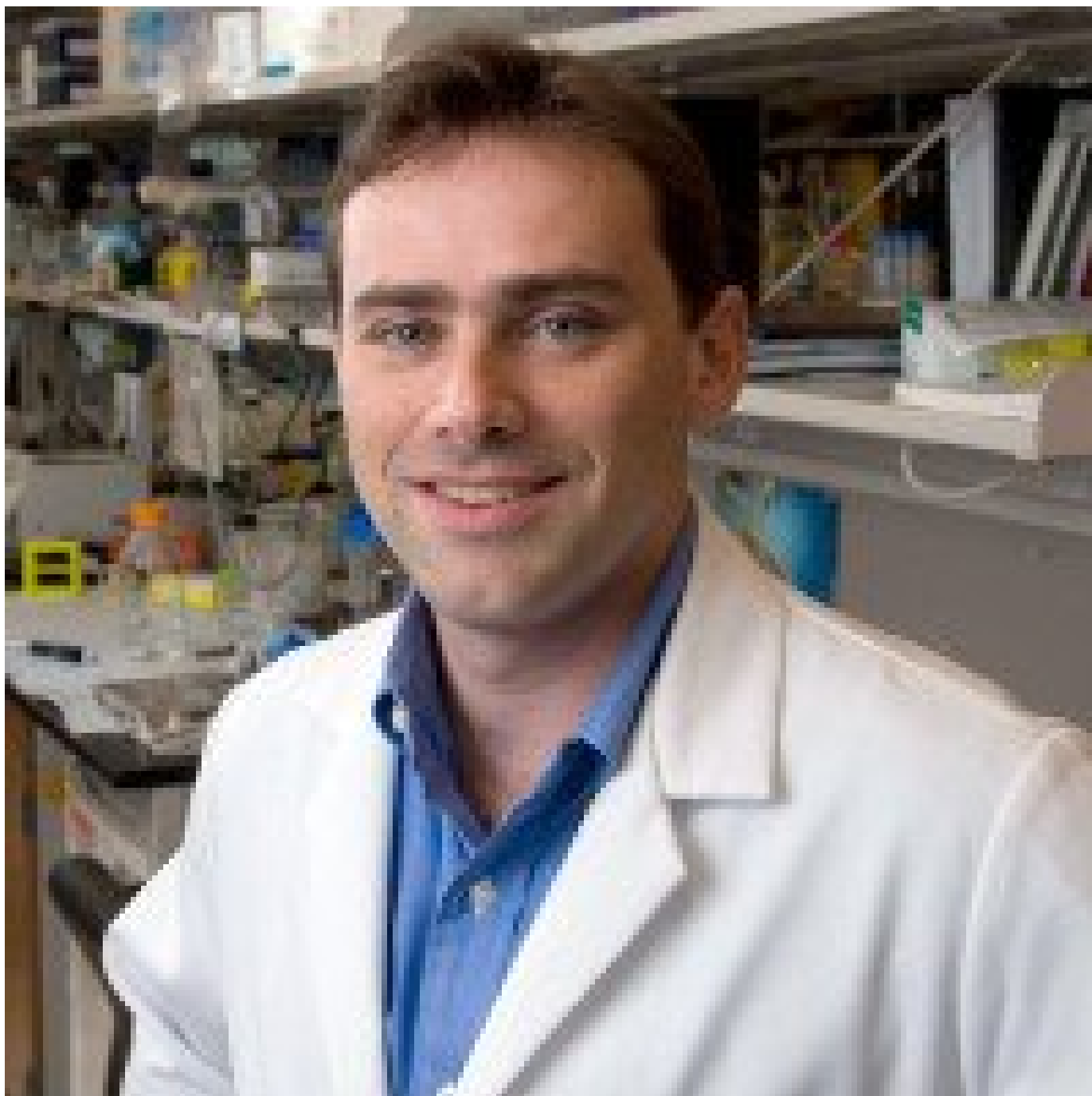
[History](#)

[Equality, diversity & inclusion](#)

[Annual report](#)

[Give to MSK](#)

-----



David B. Solit, MD  
Director, Marie-Josée & Henry R. Kravis Center for Molecular Oncology

---

Our research is based on the underlying hypothesis that the ability to inhibit an oncogenic pathway and block cancer growth will vary based on cell lineage and the complement of mutations within the tumor. To design rational therapeutic studies, we must define not only the spectrum of genetic changes within particular tumor types but also the mechanisms by which these alterations support tumor growth, survival, metastasis, and other hallmarks of cancer.

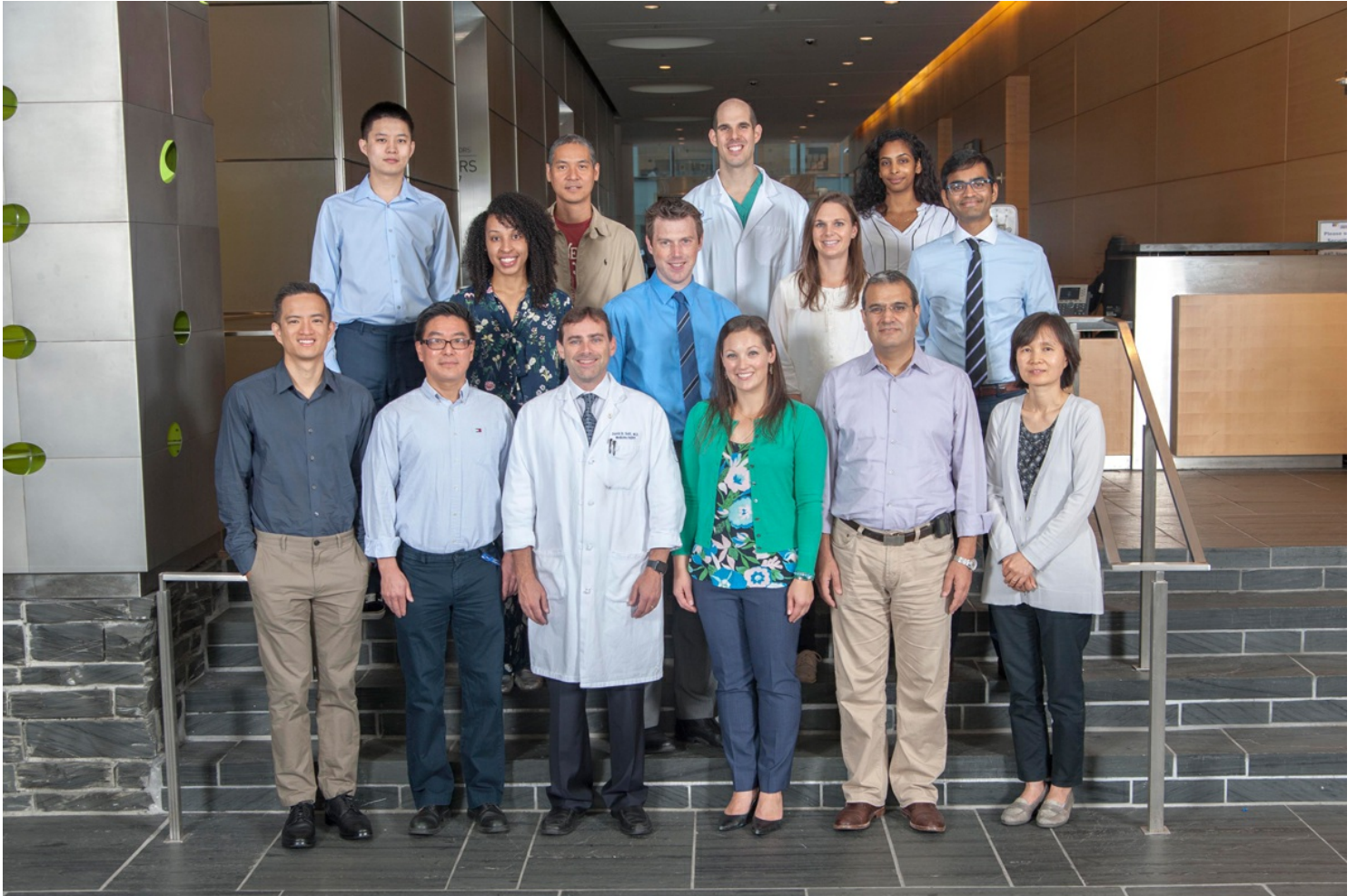
[View Lab Overview](#) →

## Research Projects

[Defining the Temporal Sequence of Oncogenic Mutations in Bladder Cancer](#)

[Studies on Mechanism\(s\) of De Novo and Acquired Resistance to RAF Inhibitors](#)

[Whole Genome Sequencing of Outlier Responders to Systemic Cancer Therapies \(Extraordinary Responder Initiative\)](#)



## Featured News

### [Finding Clues in Genes of 'Exceptional Responders'](#)

Physician-scientist David Solit was interviewed about exceptional responders, patients who defy all expectations by responding dramatically to a drug t...

#### EVENT



## [A Sneak Preview of Our Annual “Major Trends” Seminar Live Webcast](#)

Every year, MSK gives high school students and their teachers the opportunity to learn about cutting-edge biomedical research from our scientists.

### FEATURE



## [Memorial Sloan Kettering Transforms Cancer Research and Care Delivery](#)

Memorial Sloan Kettering's vision is nothing less than to revolutionize the treatment of cancer. Learn about some of the ways we're doing it.

[View All Featured News](#)

## Publications Highlights

[Xing F, Persaud Y, Pratilas CA, Taylor BS, Janakiraman M, She QB, Gallardo H, Liu C, Merghoub T, Hefter B, Dolgalev I, Viale A, Heguy A, De Stanchina E, Cobrinik D, Bollag G, Wolchok J, Houghton A, Solit DB. Concurrent loss of the PTEN and RB1 tumor suppressors attenuates RAF dependence in melanomas harboring \(V600E\)BRAF. \*Oncogene\*. 2012 Jan 26;31\(4\):446-57. doi: 10.1038/onc.2011.250. Epub 2011 Jul 4.](#)

[Poulidakos PI, Persaud Y, Janakiraman M, Kong X, Ng C, Moriceau G, Shi H, Atefi M, Titz B, Gabay MT, Salton M, Dahlman KB, Tadi M, Wargo JA, Flaherty KT, Kelley MC, Misteli T, Chapman PB, Sosman JA, Graeber TG, Ribas A, Lo RS, Rosen N, Solit DB. RAF inhibitor resistance is mediated by dimerization of aberrantly spliced BRAF\(V600E\). \*Nature\*. 2011 Nov 23;480\(7377\):387-90. doi: 10.1038/nature10662.](#)

[Hanrahan AJ, Schultz N, Westfal ML, Sakr RA, Giri DD, Scarperi S, Janakiraman M, Olvera N, Stevens EV, She QB, Aghajanian C, King TA, Stanchina Ed, Spriggs DR, Heguy A, Taylor BS, Sander C, Rosen N, Levine DA, Solit DB. Genomic complexity and AKT dependence in serous ovarian cancer. \*Cancer Discov\*. 2012 Jan;2\(1\):56-67. doi: 10.1158/2159-8290.CD-11-0170.](#)

[Misale S, Yaeger R, Hobor S, Scala E, Janakiraman M, Liska D, Valtorta E, Schiavo R, Buscarino M, Siravegna G, Bencardino K, Cercek A, Chen CT, Veronese S, Zanon C, Sartore-Bianchi A, Gambacorta M, Gallicchio M, Vakiani E, Boscaro V, Medico E, Weiser M, Siena S, Di Nicolantonio F, Solit D, Bardelli A. Emergence of KRAS mutations and acquired resistance to anti-EGFR therapy in colorectal cancer. \*Nature\*. 2012 Jun 28;486\(7404\):532-6. doi: 10.1038/nature11156.](#)

[Iyer G, Hanrahan AJ, Milowsky MI, Al-Ahmadie H, Scott SN, Janakiraman M, Pirun M, Sander C, Socci ND, Ostrovnya I, Viale A, Heguy A, Peng L, Chan TA, Bochner B, Bajorin DF, Berger MF, Taylor BS, Solit DB. Genome sequencing identifies a basis for everolimus sensitivity. \*Science\*. 2012 Oct 12;338\(6104\):221. doi: 10.1126/science.1226344. Epub 2012 Aug 23.](#)

[View All Publications](#)

## People



### David B. Solit, MD

*Director, Marie-Josée & Henry R. Kravis Center for Molecular Oncology*

Physician-scientist David Solit studies human oncology and pathogenesis, genomics, oncogenes and tumor suppressors, cancer therapeutics, and clinical trials.

MD, University of Pennsylvania

[solitd@mskcc.org](mailto:solitd@mskcc.org)

Email Address

[View physician profile](#)

Physician profile

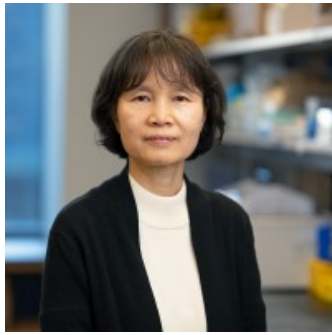
## Members

Keshia  
Pierre

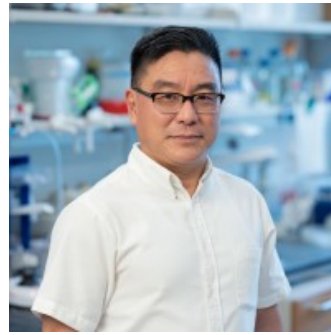
Service



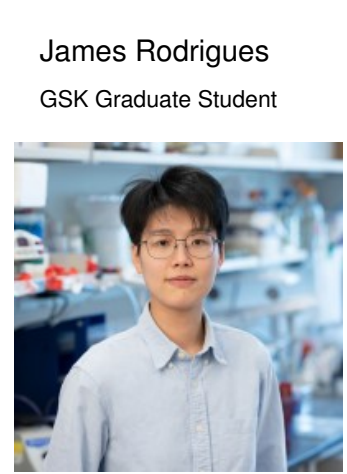
Program Assistant



Kwanghee Kim  
Assistant Attending  
Biologist

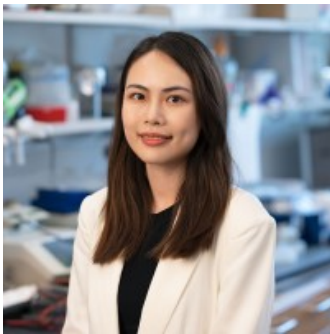


Paul (Sizhi)  
Gao  
Scientific Research Lead



James Rodriguez  
GSK Graduate Student

Josie (Jiaqian)  
Luo  
Weill Cornell BCMB  
Graduate Student



Michelle (Xinran)  
Tang  
Weill Cornell Graduate  
Student

Jacob Tallman  
Urologic Oncology Fellow

Syed Muneeb  
Alam  
Fellow

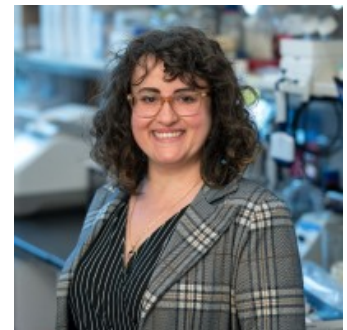


Jordan Eichholz  
Computational Biologist I



Hikmat A. Al-  
Ahmadie  
Associate Attending  
Pathologist, Memorial  
Hospital

Cansu  
Yol  
Senior Research Scientist

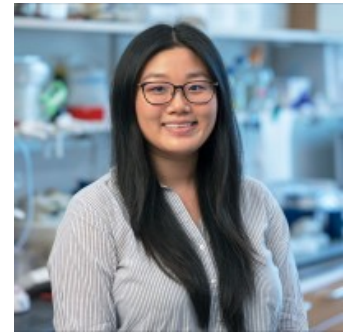


Merve Basar  
Senior Research Scientist



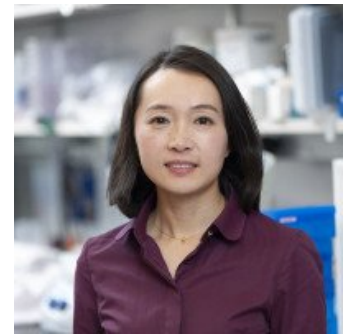
Abraham Ari  
Hakimi

Assistant Attending,  
Department of Surgery



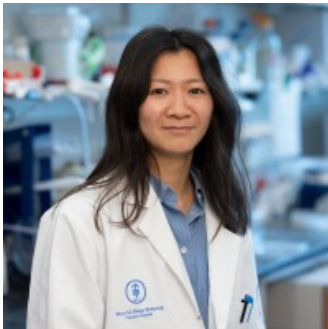
Doris  
Zheng

Research Technician



Hui Jiang

Research Scholar



Lynda  
Vuong

Senior Research Scientist



Mark Donoghue

Associate Director, CMO

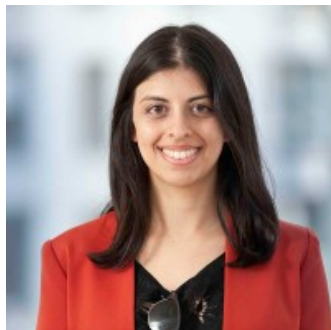
Adam  
Price

Bioinformatics Software  
Engineer



Allison Richards

Lead, CCS Analyst



Anne Marie  
Noronha



Hyung Jun  
Woo



Martina  
Bradic

Bioinformatics Software  
Engineer

Senior Computational  
Biologist

Senior Computational  
Biologist

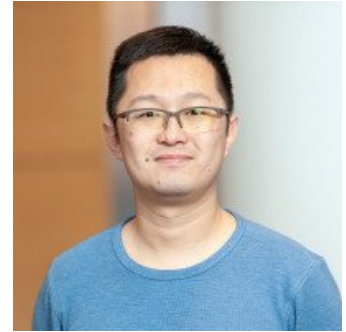


**Samuel Tischfield**  
Senior Computational  
Biologist



**Vasilisa Rudneva**  
Senior Computational  
Biologist

**Vignesh  
Ravichandran**  
Senior Computational  
Biologist



**Yixiao  
Gong**  
Lead, TEMPO Pipeline

Lab Alumni  
+

Lab Affiliations  
+

## Achievements

Member, American Society for Clinical Investigation (2011)

Louise and Allston Boyer Young Investigator Award for Basic Research, Memorial Sloan Kettering Cancer Center (2007)

Kimmel Scholar, Sidney Kimmel Foundation for Cancer Research (2007)

Career Development Award, American Society of Clinical Oncology (2002)

Young Investigator Award, American Society of Clinical (2001)

Read more  
+

## Open Positions

To learn more about available postdoctoral opportunities, please visit our [Career Center](#)

To learn more about compensation and benefits for postdoctoral researchers at MSK, please visit [Resources for Postdocs](#)

---

## Career Opportunities

[Apply now](#) →



---

## Postdoc Position in Preclinical and Translational Cancer Genomics and Therapeutics

[Apply now](#) →

### Get in Touch

✉ [soltd@mskcc.org](mailto:soltd@mskcc.org)

Lab Head Email

☎ [646-888-2641](tel:646-888-2641)

For non-clinical issues only

☎ [646-422-4459](tel:646-422-4459)

For patient-related issues

☎ [646-888-2649](tel:646-888-2649)

Lab Phone

### Disclosures

Doctors and faculty members often work with pharmaceutical, device, biotechnology, and life sciences companies, and other organizations outside of MSK, to find safe and effective cancer treatments, to improve patient care, and to educate the health care community.

MSK requires doctors and faculty members to report (“disclose”) the relationships and financial interests they have with external entities. As a commitment to transparency with our community, we make that information available to the public.

David B. Solit discloses the following relationships and financial interests:

American Association for Cancer Research

Professional Services and Activities

BridgeBio Inc.

Professional Services and Activities

Elsie Biotechnologies, Inc.

Equity; Professional Services and Activities

Fog Pharmaceuticals, Inc.

Professional Services and Activities

Fore Biotherapeutics

Equity; Professional Services and Activities

Function Oncology, Inc.

Equity; Professional Services and Activities

Paige.AI, Inc.

Professional Services and Activities

Pfizer, Inc.

Professional Services and Activities

Pyramid Biosciences, Inc.

Equity; Professional Services and Activities

Rain Therapeutics Inc.

Professional Services and Activities

Scorpion Therapeutics, Inc.

Equity; Professional Services and Activities

The information published here is for a specific annual disclosure period. There may be differences between information on this and other public sites as a result of different reporting periods and/or the various ways relationships and financial interests are categorized by organizations that publish such data.

---

This page and data include information for a specific MSK annual disclosure period (January 1, 2022 through disclosure submission in spring 2023). This data reflects interests that may or may not still exist. This data is updated annually.

Learn more about MSK's COI policies [here](#). For questions regarding MSK's COI-related policies and procedures, email MSK's Compliance Office at [ecoi@mskcc.org](mailto:ecoi@mskcc.org).

[View all disclosures](#) →

## ▼ Connect

[Contact us](#)

[Locations](#)

APPOINTMENTS

[800-525-2225](#)



## ▼ About MSK

[About us](#)

[Careers](#) ■

[Giving](#) ■

## ▼ Cancer Care

[Adult cancer types](#)

[Child & teen cancer types](#)

[Integrative medicine](#)

[Nutrition & cancer](#)

[Find a doctor](#)

## ▾ Research & Education

[Sloan Kettering Institute](#)

[Gerstner Sloan Kettering Graduate School](#) ■

[Graduate medical education](#)

[MSK Library](#) ■

---

[Communication preferences](#)

[Cookie preferences](#)

[Legal disclaimer](#)

[Accessibility statement](#)

[Privacy policy](#)

[Price transparency](#)

[Public notices](#)

© 2024 Memorial Sloan Kettering Cancer Center