

Ready to start planning your care? Call us at [800-525-2225](tel:800-525-2225) to make an appointment.

×



Memorial Sloan Kettering
Cancer Center

[About Us](#)
[Sloan Kettering Institute](#)

MOLECULAR BIOLOGY PROGRAM

[Research](#)

The Iestyn Whitehouse Lab

[Education & Training](#)

[Molecular Biology Program](#)
[News & Events](#)

Research

[Open Positions](#)



Iestyn Whitehouse, PhD
Director of the Center for Epigenetics Research (CER)

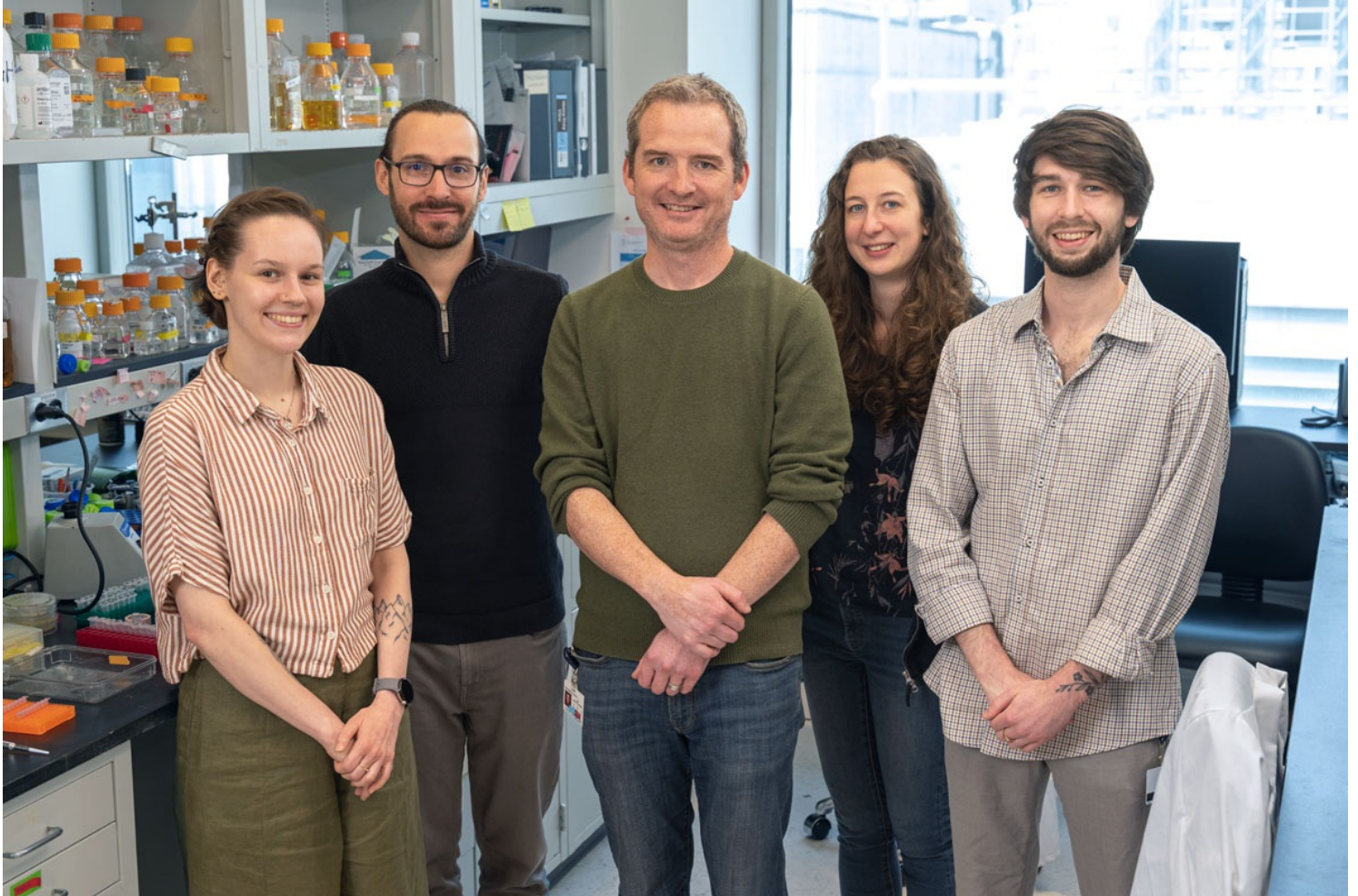
The Whitehouse lab is broadly interested in understanding how chromatin functions in the regulation of cellular processes such as DNA replication, gene transcription and epigenetics. We focus on understanding basic mechanisms and use a combination of biochemical, molecular biological and genomics approaches. We like to develop new technology and are particularly interested in the development and application of single molecule technologies such as Nanopore sequencing and single molecule indexing strategies.

[View Lab Overview](#) →

Research Projects

[Replicon-seq](#)

[Molecular Indexing of Chromatin](#)



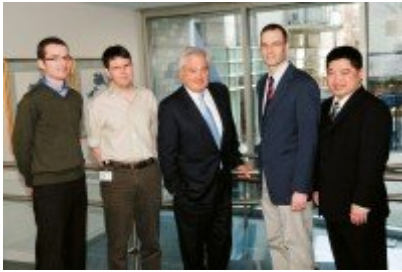
Featured News



The Iestyn Whitehouse Lab

[At Work: Molecular Biologist Iestyn Whitehouse](#)

Iestyn Whitehouse translated an early interest in woodworking into a career as a molecular biologist focused on the human genome's building blocks.



[Memorial Sloan Kettering Names First Gerstner Fund Recipients](#)

Memorial Sloan Kettering has announced the creation of the Louis V. Gerstner, Jr. Young Investigators Fund and has named the fund's first four recipients.

Publications Highlights

[Balancing act of a leading strand DNA polymerase-specific domain and its exonuclease domain promotes genome-wide sister replication fork symmetry.](#) Meng X, Claussin C, Regan-Mochrie G, Whitehouse I, Zhao X. *Genes Dev.* 2023 Jan 26. doi: 10.1101/gad.350054.122.PMID: 36702483

[Single-molecule mapping of replisome progression.](#) Claussin C, Vazquez J, Whitehouse I. *Mol Cell.* 2022 Apr 7;82(7):1372-1382.e4. doi: 10.1016/j.molcel.2022.02.010. Epub 2022 Mar 2. PMID: 35240057

[DNA replication through a chromatin environment.](#) Bellush JM, Whitehouse I. *Philos Trans R Soc Lond B Biol Sci.* 2017 Oct 5;372(1731):20160287. doi: 10.1098/rstb.2016.0287. PMID: 28847824

[DNA-mediated association of two histone-bound complexes of yeast Chromatin Assembly Factor-1 \(CAF-1\) drives tetrasome assembly in the wake of DNA replication.](#) Mattioli F, Gu Y, Yadav T, Balsbaugh JL, Harris MR, Findlay ES, Liu Y, Radebaugh CA, Stargell LA, Ahn NG, Whitehouse I, Luger K. *Elife.* 2017 Mar 18;6:e22799. doi: 10.7554/eLife.22799. PMID: 28315523

[Spatiotemporal coupling and decoupling of gene transcription with DNA replication origins during](#)

[embryogenesis in *C. elegans*](#). Pourkarimi E, Bellush JM, Whitehouse I. Elife. 2016 Dec 23;5:e21728. doi: 10.7554/eLife.21728.PMID: 28009254

[View All Publications](#)

People



Iestyn Whitehouse, PhD

Director of the Center for Epigenetics Research (CER)

Molecular biologist Iestyn Whitehouse investigates chromatin structure and the function of ATP-dependent chromatin remodelling enzymes.

PhD, The University of Dundee

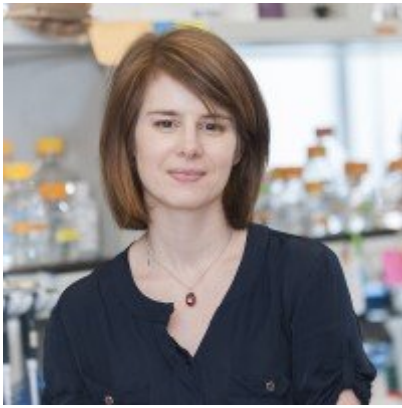
✉ whitehoi@mskcc.org

Email Address

☎ [212-639-8398](tel:212-639-8398)

Office Phone

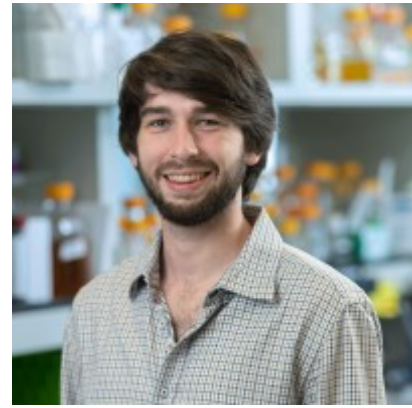
Members



Clémence
Claussin
Sr. Research Scientist



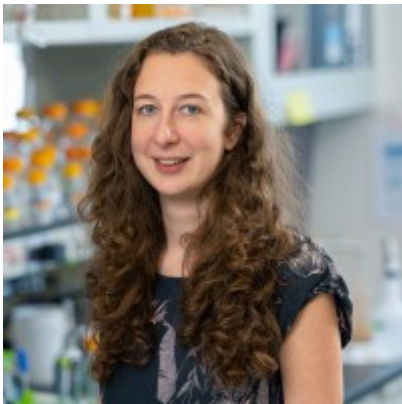
Axel
Delamarre
Sr. Research Scientist



Benton Bailey
Research Technician



Rebecca MacLean
SKI Administrative
Assistant II



Maurane Reveil
Research Scholar



Tiffany Willis
Research Technician

Lab Alumni
+

Lab Affiliations

+

Get in Touch

✉ whitehoi@mskcc.org

Lab Head Email

☎ [212-639-8398](tel:212-639-8398)

Office Phone

Disclosures

Doctors and faculty members often work with pharmaceutical, device, biotechnology, and life sciences companies, and other organizations outside of MSK, to find safe and effective cancer treatments, to improve patient care, and to educate the health care community.

MSK requires doctors and faculty members to report (“disclose”) the relationships and financial interests they have with external entities. As a commitment to transparency with our community, we make that information available to the public.

Iestyn Whitehouse discloses the following relationships and financial interests:

No disclosures meeting criteria for time period

The information published here is for a specific annual disclosure period. There may be differences between information on this and other public sites as a result of different reporting periods and/or the various ways relationships and financial interests are categorized by organizations that publish such data.

This page and data include information for a specific MSK annual disclosure period (January 1, 2022 through disclosure submission in spring 2023). This data reflects interests that may or may not still exist. This data is updated annually.

Learn more about MSK’s COI policies [here](#). For questions regarding MSK’s COI-related policies and procedures, email MSK’s Compliance Office at ecoi@mskcc.org.

[View all disclosures](#) →

[Communication preferences](#)

[Cookie preferences](#)

[Legal disclaimer](#)

[Accessibility Statement](#)

[Privacy policy](#)

[Public notices](#)

© 2024 Memorial Sloan Kettering Cancer Center