



Gerstner Sloan Kettering
Graduate School of Biomedical Sciences

[Welcome to GSK](#)

IMMUNOLOGY PROGRAM

[Admissions](#)

The Jayanta Chaudhuri Lab

[Cancer Biology](#)

Faculty

[Cancer Engineering](#)

Research

[Research](#)

[Alumni](#)



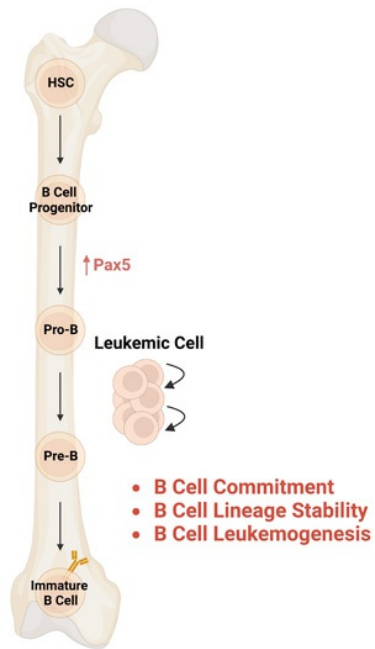
Jayanta Chaudhuri, PhD

Professor

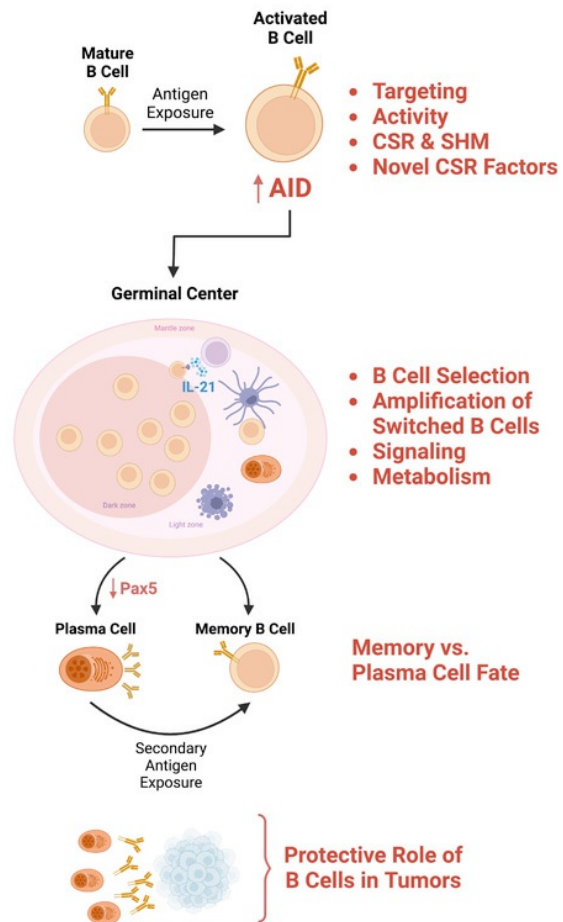
Laboratory of Molecular and Cellular Immunology

Recombination, genomic integrity, and heterogeneity in B cells

Bone Marrow

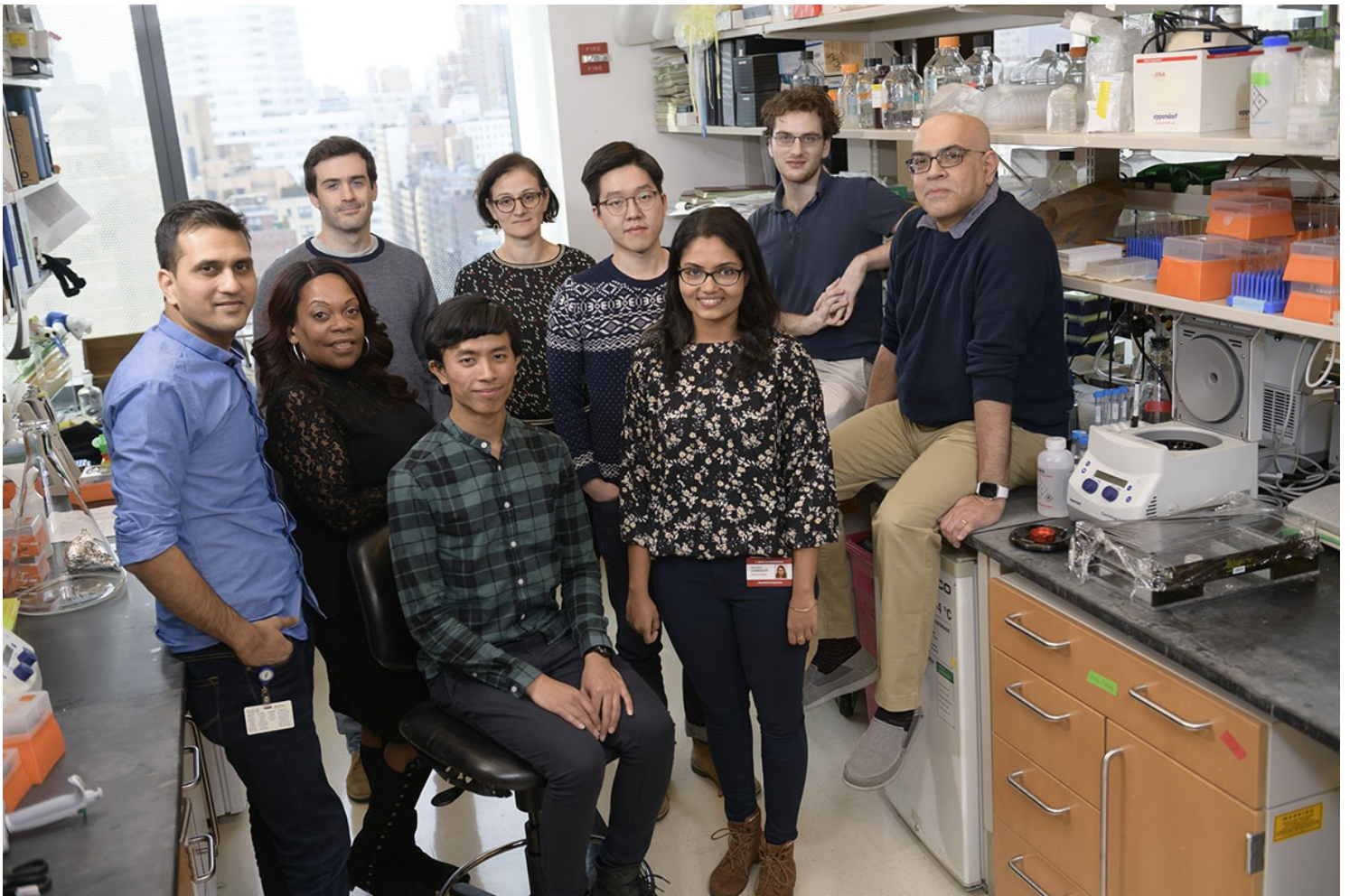


Periphery—Spleen, Lymph Nodes, Peyer's Patches



[View Lab Overview](#) →



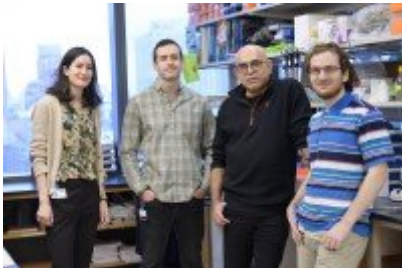


<

>

Featured News

IN THE LAB



[SKI Research Reveals New Insights into Immune Response to Viral Infections — Including COVID-19](#)

Research from Sloan Kettering Institute immunologists suggests that the body may mount an immune response to respiratory viruses that lasts longer than previously thought. The discovery

could impact the timing of COVID-19 vaccinations.



[At Work: Immunologist Jayanta Chaudhuri](#)

Immunologist Jayanta Chaudhuri has long been interested in biology, Mendelian genetics, and the story of how life evolved.

IN THE COMMUNITY



[Giving Supplies a Second Life, and Making an Environmental Impact in the Process](#)

Memorial Sloan Kettering “green” committees focus on waste reduction and energy efficiency throughout the institution while donating useful supplies to New York–area nonprofits.

[View All Featured News](#)

Publications

Sharma, R., Smolkin, R. M., Chowdhury, P., Fernandez, K. C., Kim, Y., Cols, M., Alread, W., Yen, W.-F., Hu, W., Wang, Z.-M., Violante, S., Chaligné, R., Li, M. O., Cross, J. R., & [Chaudhuri, J.](#) (2023). Distinct metabolic requirements regulate B cell activation and germinal center responses. *Nature Immunology*, 24(8), 1358–1369. <https://doi.org/10.1038/s41590-023-01540-y>

Fernandez, K. C., Feeney, L., Smolkin, R. M., Yen, W.-F., Matthews, A. J., Alread, W., Petrini, J. H. J., & [Chaudhuri, J.](#) (2022). The structure-selective endonucleases GEN1 and MUS81 mediate

complementary functions in safeguarding the genome of proliferating B lymphocytes. *eLife*, 11, e77073. <https://doi.org/10.7554/eLife.77073>

Maekawa, K., Yamada, S., Sharma, R., Chaudhuri, J., & Keeney, S. (2022). Triple-helix potential of the mouse genome. *Proceedings of the National Academy of Sciences of the United States of America*, 119(19), e2203967119. <https://doi.org/10.1073/pnas.2203967119>

Yewdell, W. T., Smolkin, R. M., Belcheva, K. T., Mendoza, A., Michaels, A. J., Cols, M., Angeletti, D., Yewdell, J. W., & Chaudhuri, J. (2021). Temporal dynamics of persistent germinal centers and memory B cell differentiation following respiratory virus infection. *Cell Reports*, 37(6), 109961. <https://doi.org/10.1016/j.celrep.2021.109961>

Mendoza, A., Yewdell, W. T., Hoyos, B., Schizas, M., Bou-Puerto, R., Michaels, A. J., Brown, C. C., Chaudhuri, J., & Rudensky, A. Y. (2021). Assembly of a spatial circuit of T-bet-expressing T and B lymphocytes is required for antiviral humoral immunity. *Science Immunology*, 6(60), eabi4710. <https://doi.org/10.1126/sciimmunol.abi4710>

[View All Publications](#)

People



Jayanta Chaudhuri, PhD

Professor

Immunologist Jayanta Chaudhuri studies the mechanisms of immunoglobulin gene diversification.
PhD, Albert Einstein College of Medicine

✉ chaudhuj@mskcc.org

Email Address

☎ [646-888-2357](tel:646-888-2357)

Office Phone

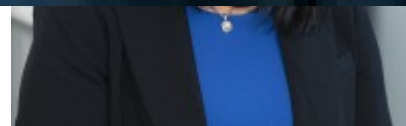
Members



Jayanta Chaudhuri
Principal Investigator



Stephanie Downs-
Canner
Assistant Attending
Surgeon

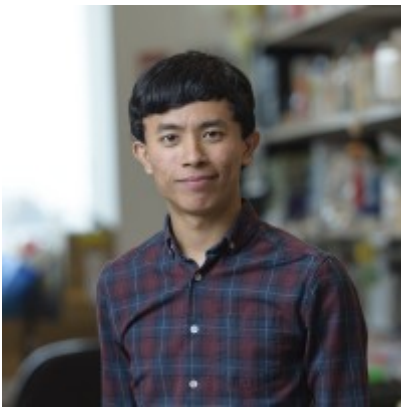


Jennifer
Lue
Assistant Attending



Francesca Manara

Postdoctoral Research
Fellow



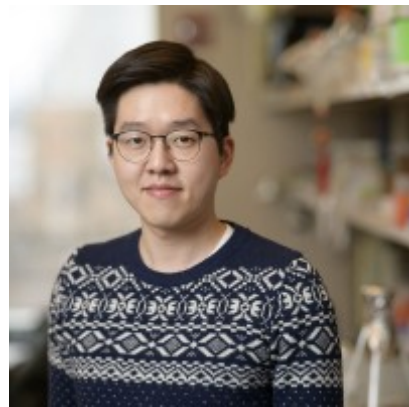
Keith Fernandez

Graduate Student



Ryan Smolkin

Graduate Student



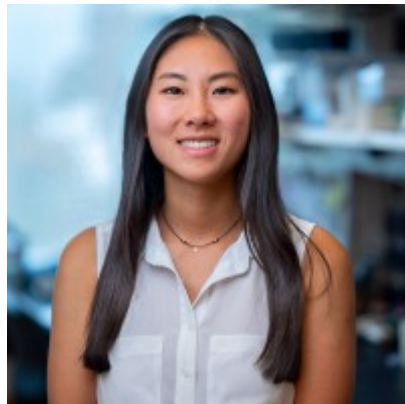
Youngjun Kim

Graduate Student



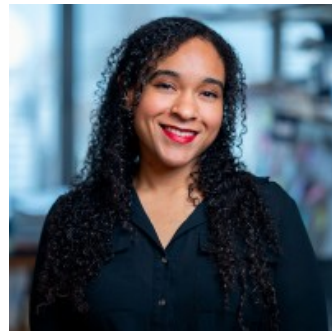
Kalina Belcheva

Graduate Student



Marisa Lazarus

Research Technician



Kanelly

Reyes

Research Technician



Veronica
Shields
Administrative Assistant

Lab Alumni
+

Lab Affiliations
+

Open Positions

To learn more about available postdoctoral opportunities, please visit our [Career Center](#)

To learn more about compensation and benefits for postdoctoral researchers at MSK, please visit [Resources for Postdocs](#)

Postdoctoral Position

[Apply now](#) →

Rotation Students

[Apply now](#) →

Technician

[Apply now](#) →

[View All Open Positions](#)

Get in Touch

✉ chaudhuj@mskcc.org

Lab Head Email

☎ [646-888-2357](tel:646-888-2357)

Office Phone

☎ [646-422-0495](tel:646-422-0495)

Office Fax

☎ [646-888-2334](tel:646-888-2334)

Lab Phone

☎ [646-888-2614](tel:646-888-2614)

Lab Phone

Disclosures

Doctors and faculty members often work with pharmaceutical, device, biotechnology, and life sciences companies, and other organizations outside of MSK, to find safe and effective cancer treatments, to improve patient care, and to educate the health care community.

MSK requires doctors and faculty members to report (“disclose”) the relationships and financial interests they have with external entities. As a commitment to transparency with our community, we make that information available to the public.

Jayanta Chaudhuri discloses the following relationships and financial interests:

No disclosures meeting criteria for time period

The information published here is for a specific annual disclosure period. There may be differences between information on this and other public sites as a result of different reporting periods and/or the various ways relationships and financial interests are categorized by organizations that publish such data.

This page and data include information for a specific MSK annual disclosure period (January 1, 2022 through disclosure submission in spring 2023). This data reflects interests that may or may not still exist. This data is updated annually.

Learn more about MSK's COI policies [here](#). For questions regarding MSK's COI-related policies and procedures, email MSK's Compliance Office at ecoi@mskcc.org.

[View all disclosures](#) →

[Communication preferences](#)

[Cookie preferences](#)

[Legal disclaimer](#)

[Accessibility Statement](#)

[Privacy policy](#)

[Public notices](#)

© 2024 Louis V. Gerstner Jr. Graduate School of Biomedical Sciences Memorial Sloan Kettering Cancer Center

