

Ready to start planning your care? Call us at [800-525-2225](tel:800-525-2225) to make an appointment.

×



Memorial Sloan Kettering
Cancer Center

[Make an Appointment](#)

[← Back](#)

HOSPITAL RESEARCH TEAMS

[Patient Support & Treatment](#)

[Refer a Patient](#)

Exercise Oncology Program

ABOUT US

[Our mission, vision & core values](#)

[Leadership](#)

[History](#)

[Equality, diversity & inclusion](#)

[Annual report](#)

[Give to MSK](#)



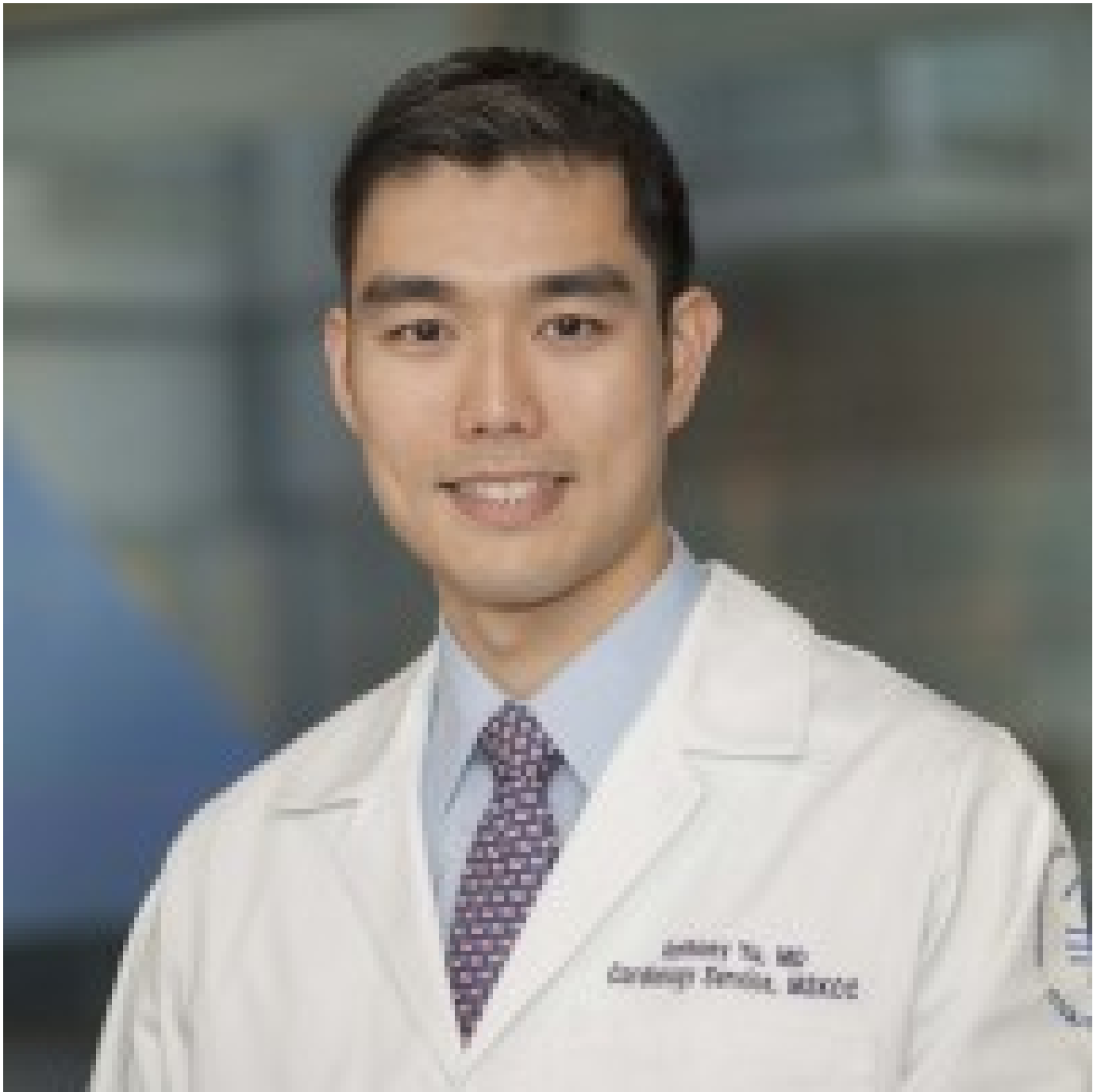
Lee Jones
Head, Exercise Oncology Program and Principal Investigator



Jessica Scott
Principal Investigator



Neil Iyengar
Principal Investigator



Anthony Yu
Principal Investigator

Mission: To conduct innovative research investigating the impact of precision exercise therapy across the cancer continuum

Objective: To change the landscape of cancer care by challenging the prevailing dogma of exercise as a “one size, fits all” therapy to one in which it is matched to the individual on the basis of physiological characteristics and/or the molecular profile of the person or tumor to deliver precision exercise medicine.

[View More](#) →



Featured News



[Does Exercise Improve Survival After a Cancer Diagnosis? An Encouraging New Study](#)

Friday, September 15, 2023

Learn how exercise can help many people live longer after they are diagnosed with cancer, according to a new study led by MSK exercise scientist Lee Jones, Chief of the Exercise-Oncology Service.

Publications

Lavery JA, Boutros PC, Tammela T, Moskowitz CS, Jones LW. Association of exercise with pan-cancer incidence and overall survival. *Cancer Cell*, 2024. PMID: 38181796. <https://pubmed.ncbi.nlm.nih.gov/38181796/>

Lavery JA, Boutros PC, Tammela T, Moskowitz CS, Jones LW. A pan-cancer analysis of post-diagnosis exercise and mortality. *J Clin Oncol*, 2023. PMID. 37651670. <https://pubmed.ncbi.nlm.nih.gov/37651670/>

Scott JM, Lee J, Herndon JE, Michalski MG, Lee CP, O'Brien KA, Sasso JP, Yu AF, Rowed KA, Bromberg JF, Traina TA, Gucalp A, Sanford RA, Gajria D, Modi S, Comen EA, D'Andrea G, Blinder VS, Eves ND, Peppercorn JM, Moskowitz CS, Dang CT, Jones LW. Timing of exercise therapy in patients initiating adjuvant chemotherapy for breast cancer: A randomized trial. *Eur Heart J*, 2023. PMID: 36806405. <https://pubmed.ncbi.nlm.nih.gov/36806405/>

Find more of Dr. Lee Jones' work [here](#)

Find more of Dr. Jessica Scott's work [here](#)

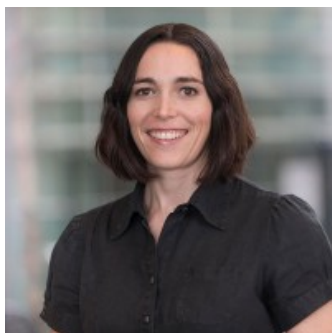
[View All Publications](#)

People



Lee
Jones

Head, Exercise Oncology
Program and Principal
Investigator



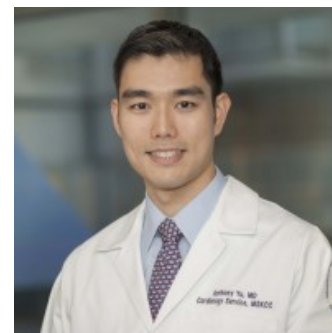
Jessica
Scott

Principal Investigator



Neil Iyengar

Principal Investigator



Anthony
Yu

Principal Investigator

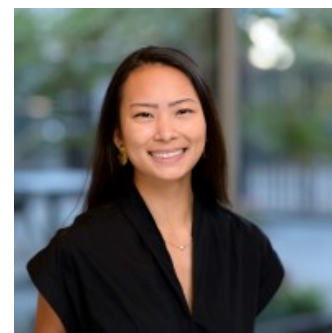
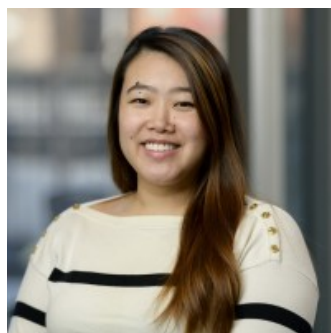
Members

Emily Andriello

Exercise Physiologist

Alexis Braun

Exercise Physiologist



Stephanie
Cao
Clinical Research
Specialist

Adele
Carlson
Clinical Research
Associate



Vanessa
Castillo
Exercise Physiologist



Olivia Chan
Exercise Physiologist



Su Chun
Clinical Research
Specialist



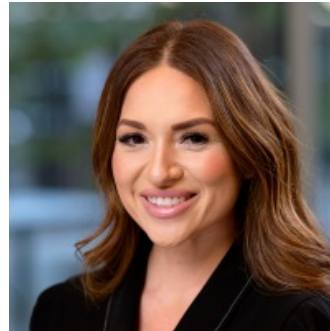
Keresmhah (Keri)
Collins
Exercise Physiologist



Adwoa Darkwa-Anto
Clinical Research
Specialist



Gina
Fickera
Clinical Research
Associate

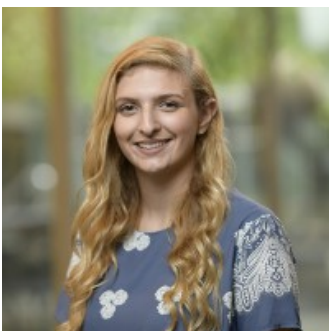


Jessica Flores
Regulatory Research
Associate

Dean
Gailey
Clinical Research
Specialist



Courtenay Graham
Research Technician



Jenna Harrison
Clinical Research
Supervisor

Dale
Holsombeck
Exercise Physiologist



Catherine
Lee
Clinical Research Manager



Nancy
Lee
Exercise Physiologist



Sarah Lehman
Lead Exercise Physiologist



Meghan Michalski
Exercise Physiologist
Supervisor



Anna Moffitt
Clinical Research
Coordinator

**Shellon
Punch**
Senior Office Coordinator

Julia Rabazzi
Clinical Research
Coordinator



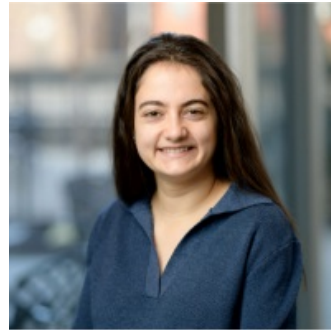
**Kurtis
Stoeckel**
Lead Exercise Physiologist



Whitney Underwood
Senior Project Coordinator



**Zoe
Wicks**
Exercise Physiologist



Samantha Zinman
Clinical Research
Coordinator

Alumni
+

Affiliations
+

▼ Connect

[Contact us](#)

[Locations](#)

APPOINTMENTS

[800-525-2225](#)



▼ About MSK

[About us](#)

[Careers](#) 

[Giving](#) 

▼ Cancer Care

[Adult cancer types](#)

[Child & teen cancer types](#)

[Integrative medicine](#)

[Nutrition & cancer](#)

[Find a doctor](#)

▼ Research & Education

[Sloan Kettering Institute](#)

[Gerstner Sloan Kettering Graduate School](#) 

[Graduate medical education](#)

[MSK Library](#) 

[Communication preferences](#)

[Cookie preferences](#)

[Legal disclaimer](#)

[Accessibility statement](#)

[Privacy policy](#)

[Price transparency](#)

[Public notices](#)

© 2024 Memorial Sloan Kettering Cancer Center

