

Ready to start planning your care? Call us at [800-525-2225](tel:800-525-2225) to make an appointment.

×



Memorial Sloan Kettering
Cancer Center

[Make an Appointment](#)

[Back](#)

[The Sarat Chandra Lab](#)
[Refer a Patient](#)

[Refer a Patient](#)

[Refer a Patient](#)

ABOUT US

[Our mission, vision & core values](#)

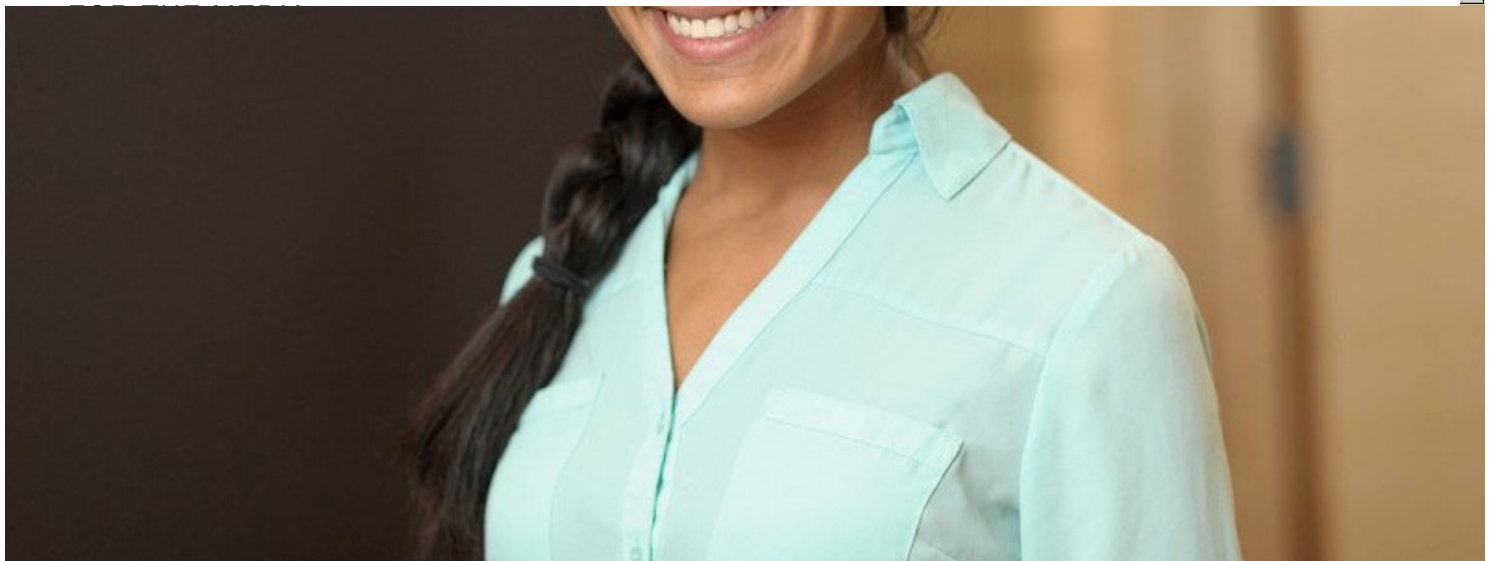
[Leadership](#)

[History](#)

[Equality, diversity & inclusion](#)

[Annual report](#)

[Give to MSK](#)



Email

galak@sloankettering.edu

Dissertation

[KMT2C directs estrogen receptor activity in normal and transformed mammary cells \(2017\)](#)

Mentor

[Sarat Chandarlapaty, MD, PhD](#)

Start Year

2012

End Year

2017

Education

The College of New Jersey

Fellowships

Geoffrey Beene Graduate Student Fellowship (2013-2014)

Publications

[Gala K, Li Q, Sinha A, Razavi P, Dorso M, Sanchez-Vega F, Chung YR, Hendrickson R, Hsieh J, Berger M, Schultz N, Pastore A, Abdel-Wahab O, Chandarlapaty S. \(2018\) KMT2C mediates the estrogen dependence of breast cancer through regulation of ER \$\alpha\$ enhancer function. *Oncogene*.](#)

[Gala, K. and Chandarlapaty, S. \(2014\) Molecular pathways: HER3 targeted therapy. *Clin Cancer Res*, 20 1410-1416. PMID: PMC3977203.](#)

[Toy, W., Shen, Y., Won, H., Green, B., Sakr, R., Will, M., Li, Z., Gala, K., Fanning, S., King, T., Hudis, C., Chen, D., Taran, T., Hortobagyi, G., Greene, G., Berger, M., Baselga, J., and Chandarlapaty, S. \(2013\) ESR1 ligand-binding domain mutations in hormone- resistant breast cancer. *Nat Genet*, 45, 1439-1445. PMID: PMC3903423.](#)

[Scaglione BJ, Salerno E, Gala K, Pan M, Langer JA, Mostowski HS, Bauer S, Marti G, Li Y, Tsiagbe VK, Raveche ES. \(2009\) Regulatory T cells as central regulators of both autoimmunity and B cell malignancy in New Zealand Black mice. *J Autoimmun.*, 32, 14-23.](#)



[View a full listing of Kinisha Gala's journal articles.](#)

[Communication preferences](#)

[Cookie preferences](#)

[Legal disclaimer](#)

[Accessibility statement](#)

[Privacy policy](#)

[Price transparency](#)

[Public notices](#)

© 2024 Memorial Sloan Kettering Cancer Center