

Ready to start planning your care? Call us at [800-525-2225](tel:800-525-2225) to make an appointment.

×



Memorial Sloan Kettering  
Cancer Center

[Make an Appointment](#)

[Back](#)

[The Charles Sawyers Lab](#)

[Learn About Our Cancer Treatment](#)

[Refer a Patient](#)

## ABOUT US

[Our mission, vision & core values](#)

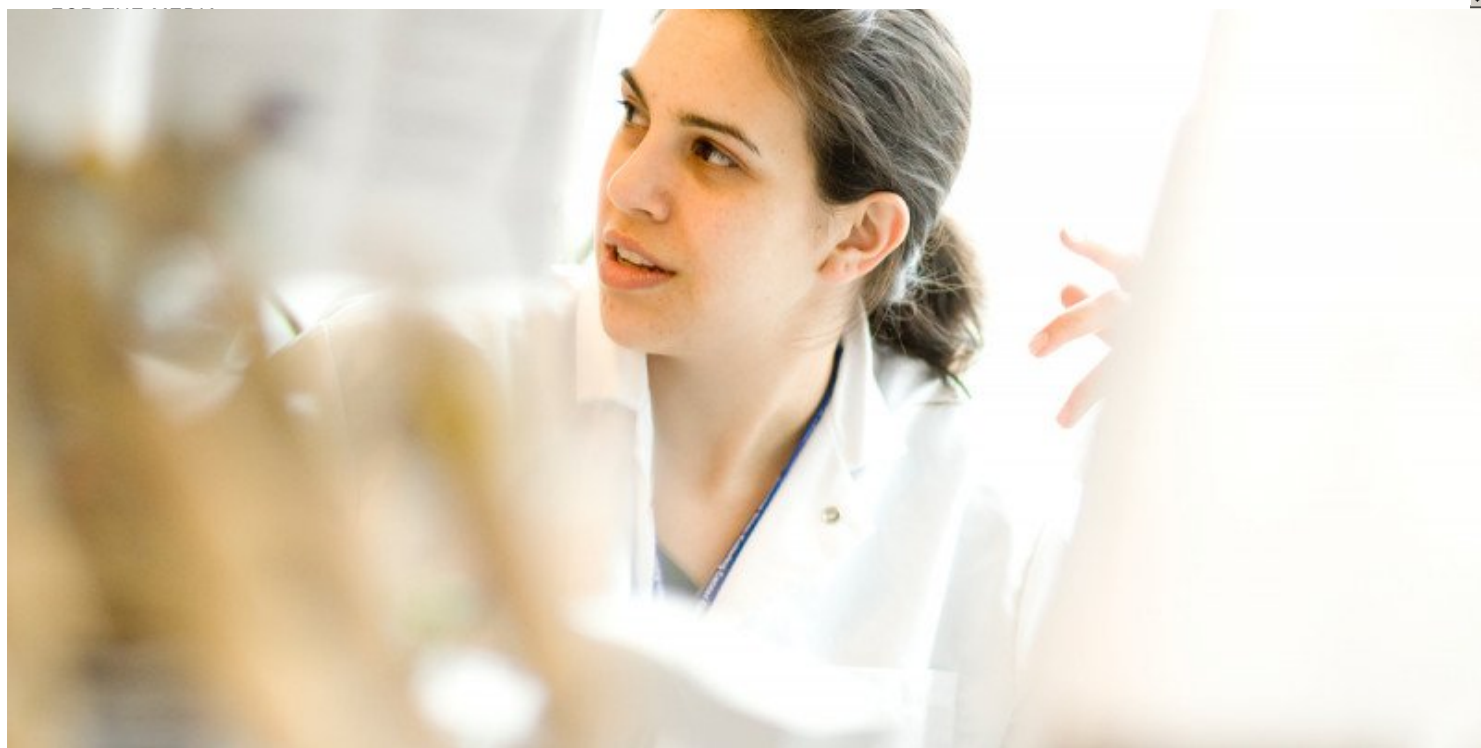
[Leadership](#)

[History](#)

[Equality, diversity & inclusion](#)

[Annual report](#)

[Give to MSK](#)



## Lab Phone

646-888-2163

## Lab Fax

646-888-2595

## Email

[balbas@mskcc.org](mailto:balbas@mskcc.org)

## Dissertation

[Mutation Based Resistance to Antiandrogens in Prostate Cancer \(2013\)](#)

## Mentor

[Charles L. Sawyers, MD](#)

## Start Year

2009

## End Year

2013

## Education

University of California, Los Angeles

## Publications

[Balbas MD, Burgess MR, Murali R, Wongvipat J, Skaggs BJ, Mundel P, Weins A, Sawyers CL. \(2014\) MAGI-2 scaffold protein is critical for kidney barrier function. \*Proc Natl Acad Sci U S A.\*, 111, 14876-81. PMID: PMC4205655.](#)

[Arora V, Schenkein E, Murali R, Subudhi S, Wongvipat J, Balbas M, Shah N, Cai L, Efsthathiou E, Logothetis C, Cheng D, Sawyers C. \(2013\) Glucocorticoid receptor confers resistance to antiandrogens by bypassing androgen receptor blockade. \*Cell\*, 155, 1309-1322.](#)

[Balbas M, Evans M, Hosfield D, Wongvipat J, Arora V, Watson P, Chen Y, Greene G, Shen Y, Sawyers C. \(2013\) Overcoming mutation-based resistance to antiandrogens with rational drug design. \*Elife\*, 2, 1-21.](#)

[Watson P, Chen Y, Balbas M, Wongvipat J, Socci N, Viale A, Kim K, Sawyers C. \(2010\) Constitutively active androgen receptor splice variants expressed in castration-resistant prostate cancer require full-length androgen receptor. \*Proc Natl Acad Sci U S A.\*, 107, 16759-16765.](#)

[Shah NP, Kasap C, Weier C, Balbas M, Nicoll JM, Bleickardt E, Nicaise C, Sawyers CL. \(2008\) Transient potent BCR-ABL inhibition is sufficient to commit chronic myeloid leukemia cells irreversibly to apoptosis. \*Cancer Cell\*, 14, 485-93.](#)

[View a full listing of Minna Balbas' journal articles.](#)

## Connect

[Contact us](#)

[Locations](#)

APPOINTMENTS

800-525-2225



## About MSK

[About us](#)

[Careers](#) 

[Giving](#) ■

## ▾ Cancer Care

[Adult cancer types](#)

[Child & teen cancer types](#)

[Integrative medicine](#)

[Nutrition & cancer](#)

[Find a doctor](#)

## ▾ Research & Education

[Sloan Kettering Institute](#)

[Gerstner Sloan Kettering Graduate School](#) ■

[Graduate medical education](#)

[MSK Library](#) ■

---

[Communication preferences](#)

[Cookie preferences](#)

[Legal disclaimer](#)

[Accessibility statement](#)

[Privacy policy](#)

[Price transparency](#)

[Public notices](#)

© 2024 Memorial Sloan Kettering Cancer Center