

Ready to start planning your care? Call us at [800-525-2225](tel:800-525-2225) to make an appointment.

×



Memorial Sloan Kettering
Cancer Center

[About Us](#)
[Sloan Kettering Institute](#)

IMMUNOLOGY PROGRAM

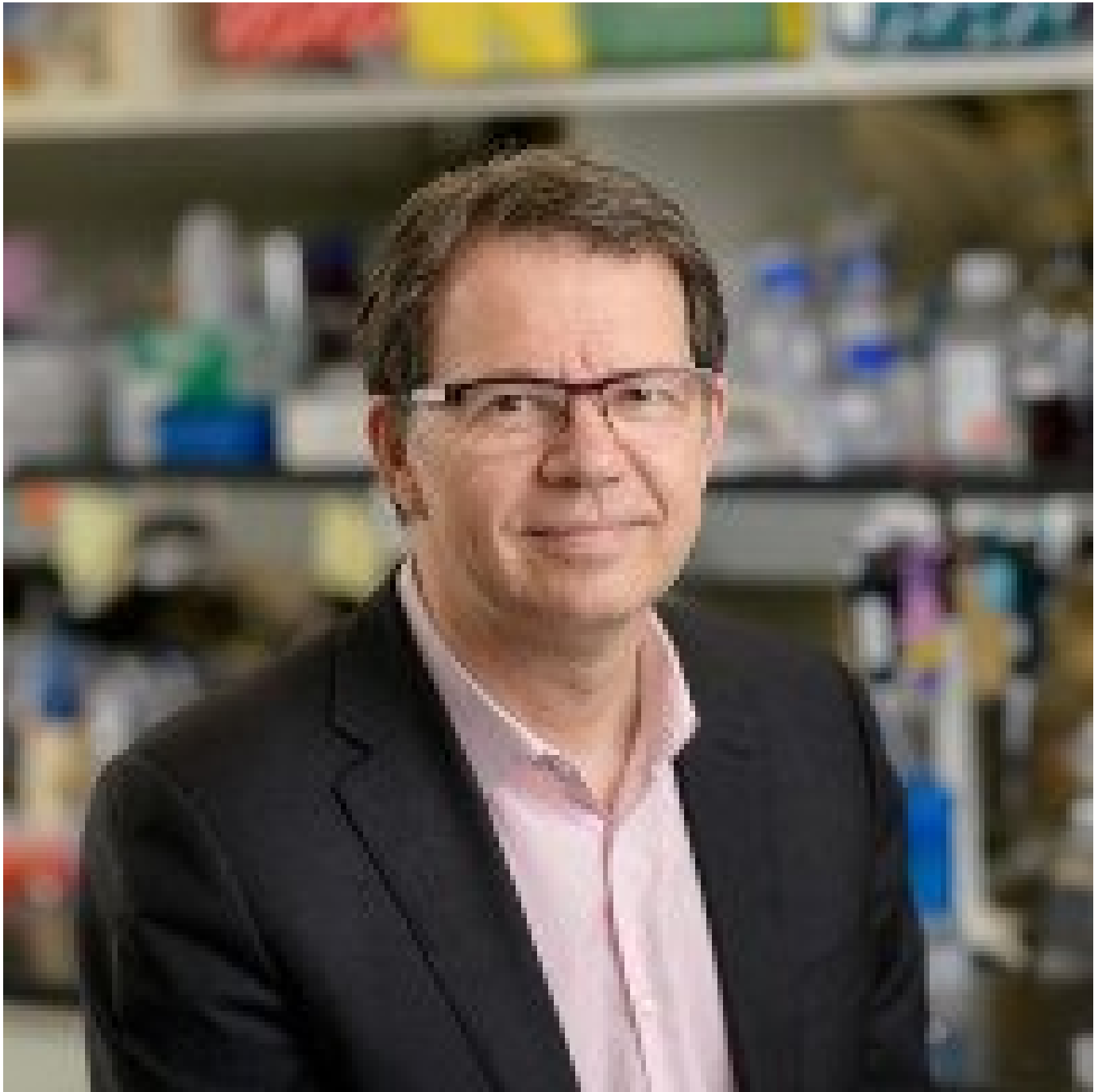
[Research](#)

The Michel Sadelain Lab

[Education & Training](#)

[Immunology Program](#)
[News & Events](#)

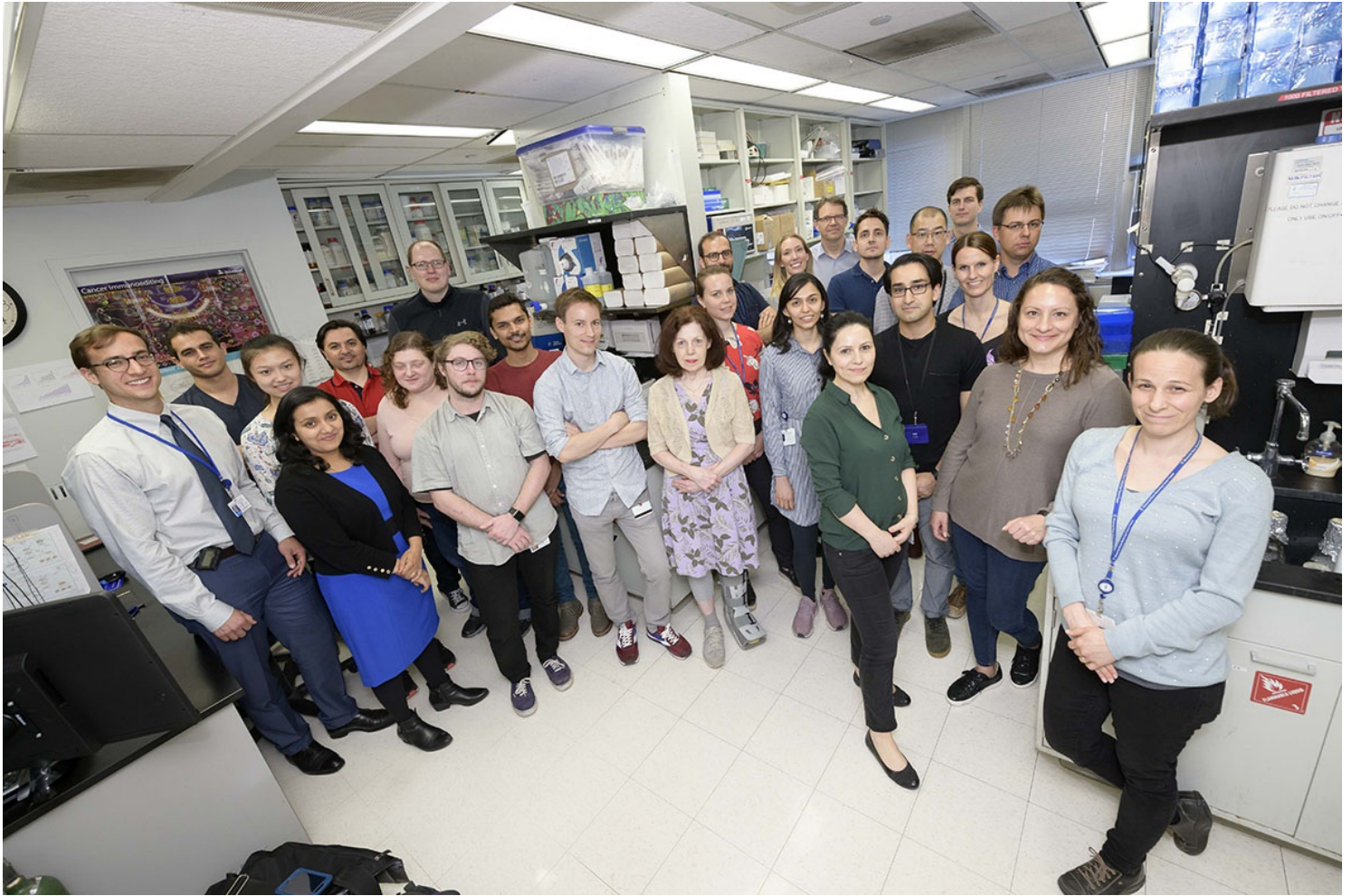
Research
[Open Positions](#)



Michel Sadelain, MD, PhD
Stephen and Barbara Friedman Chair; Director, Center for Cell Engineering

My lab studies the mechanisms governing transgene expression, stem cell engineering, and genetic strategies to enhance immunity against cancer.

Dr Michel Sadelain [has been awarded the 2024 Breakthrough Prize in Life Sciences](#). The prestigious prize recognizes Dr. Sadelain for the development of chimeric antigen receptor T cell immunotherapy whereby the patient's T cells are modified to target and kill cancer cells.

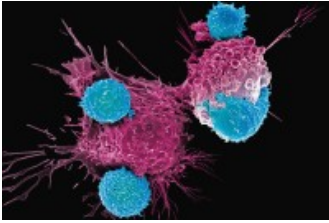


Featured News



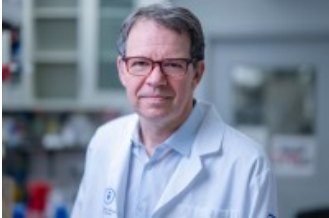
[Women in Cancer: Meet Three Trailblazers at MSK](#)

Hear from three women breaking new ground in the fields of cancer metastasis, immunology and philanthropy.



[How MSK Is Improving CAR T Cell Therapy for Cancer Treatment](#)

Learn how experts at MSK who helped develop CAR T cell therapy to fight cancer are making the treatment stronger, safer, more durable and accessible to more people.



[Disrupting a Single Gene Could Improve CAR T Cell Immunotherapy, New Study Shows](#)

Learn how disrupting a gene called SUV39H1 could make CAR T cells more powerful.

[View All Featured News](#)

Publications Highlights

[Jain N, Zhao Z, Koche RP, Antelope C, Gozlan Y, Montalbano A, Brocks D, Lopez M, Dobrin A, Shi Y, Gunset G, Giavridis T, Sadelain M. Disruption of SUV39H1-mediated H3K9 methylation sustains CAR T cell function. *Cancer Discovery*. 2023](#)

[Haubner S, Mansilla-Soto J, Nataraj S, Kogel F, Chang Q, de Stanchina E, Lopez M, Ng MR, Fraser K, Subklewe M, Park JH, Wang X, Rivière I, Sadelain M. Cooperative CAR targeting to selectively eliminate AML and minimize escape. *Cancer Cell*. 2023 Oct 4:S1535-6108\(23\)00326-4.](#)

[Zhao Z, Sadelain M. CAR T cell design: approaching the elusive AND-gate. *Cell Res*. 2023 Oct;33\(10\):739-740.](#)

[Hamieh M, Mansilla-Soto J, Rivière I, Sadelain M. Programming CAR T Cell Tumor Recognition: Tuned Antigen Sensing and Logic Gating. *Cancer Discov*. 2023 Apr 3;13\(4\):829-843.](#)

[Jain N, Zhao Z, Feucht J, Koche R, Iyer A, Dobrin A, Mansilla-Soto J, Yang J, Zhan Y, Lopez M, Gunset G, Sadelain M. TET2 guards against unchecked BATF3-induced CAR T cell expansion. *Nature*. 2023 Mar;615\(7951\):315-322.](#)

[View All Publications](#)

People

Michel Sadelain, MD, PhD

Stephen and Barbara Friedman Chair; Director, Center for Cell Engineering


Immunologist Michel Sadelain studies the mechanisms governing transgene expression, stem cell engineering, and genetic strategies to enhance immunity against cancer.

MD, University of Paris

PhD, University of Alberta

 m-sadelain@ski.mskcc.org

Email Address

 [212-639-6190](tel:212-639-6190)

Office Phone

Members

Assistant



Andreina Garcia
Angus
Senior Research
Technician

Diego
Gilioli
Research Fellow



Gertrude
Gunset
Senior Research Assistant



Leena Halim
Research Fellow



Mohamad
Hamieh
Senior Research Scientist



Sophie A. Hanina
Senior Research Scientist



Sascha
Haubner
Senior Research Scientist



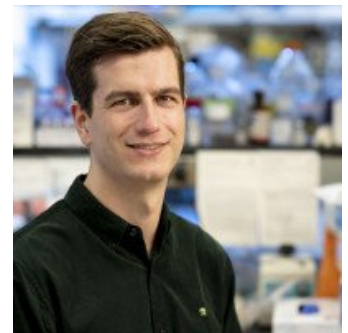
Nayan
Jain
Research Fellow,
Memorial Sloan Kettering,
New York, NY



Friederike Kogel
Senior Research Scientist



Ivan Kotchetkov
Instructor, Neuro-oncology



Pieter L.
Lindenberg



Michael A. Lopez
Bioinformatics Engineer



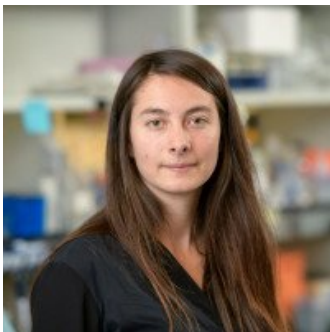
Karlo
Perica
Assistant Attending
Physician



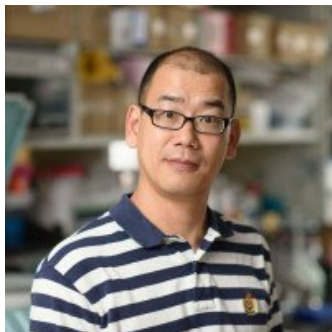
Yuzhe
Shi
Research Associate



Sjoukje van der
Stegen
Senior Research Scientist



Ophelie L.
Vivier
Graduate research
Assistant



Zeguo
Zhao
Senior Research Scientist

Lab Alumni
+

Lab Affiliations
+

Achievements

Awarded Breakthrough Prize in Life Sciences (2024)

Citation Laureate 2023

Recipient of the American Society of Gene & Cell Therapy Outstanding Achievement Award (2021)

Laureate of the 48th Foundation ARC Léopold Griffuel award for translational and clinical research, Paris, France (2020)

[Inserm International Prize, Paris, France \(2019\)](#)

Read more

+

Get in Touch

✉ m-sadelain@ski.mskcc.org

Lab Head Email

☎ [212-639-6190](tel:212-639-6190)

Office Phone

☎ [917-432-2340](tel:917-432-2340)

Office Fax

☎ [212-639-6170](tel:212-639-6170)

Lab Phone

Disclosures

Doctors and faculty members often work with pharmaceutical, device, biotechnology, and life sciences companies, and other organizations outside of MSK, to find safe and effective cancer treatments, to improve patient care, and to educate the health care community.

MSK requires doctors and faculty members to report (“disclose”) the relationships and financial interests they have with external entities. As a commitment to transparency with our community, we make that information available to the public.

Michel Sadelain discloses the following relationships and financial interests:

Abintus Bio

Intellectual Property Rights

Atara Biotherapeutics

Intellectual Property Rights

Berkeley Lights, Inc.

Equity

Ceramedix

Intellectual Property Rights

Fate Therapeutics

Intellectual Property Rights

Juno Therapeutics
Intellectual Property Rights

Minerva Biotechnologies
Intellectual Property Rights

Mnemo Therapeutics
Equity; Intellectual Property Rights

NHLBI Gene Therapy Resource Program
Professional Services and Activities (Uncompensated)

Senescea Therapeutics
Equity; Intellectual Property Rights; Professional Services and Activities (Uncompensated)

Takeda Pharmaceuticals
Intellectual Property Rights

Y-mAbs Therapeutics, Inc.
Intellectual Property Rights

The information published here is for a specific annual disclosure period. There may be differences between information on this and other public sites as a result of different reporting periods and/or the various ways relationships and financial interests are categorized by organizations that publish such data.

This page and data include information for a specific MSK annual disclosure period (January 1, 2022 through disclosure submission in spring 2023). This data reflects interests that may or may not still exist. This data is updated annually.

Learn more about MSK's COI policies [here](#). For questions regarding MSK's COI-related policies and procedures, email MSK's Compliance Office at ecoi@mskcc.org.

[View all disclosures](#) →

▼ About Us

[Overview](#)

[Leadership](#)

[Administration](#)

[History](#)

[Contact Us](#)



Research

[Overview](#)

[Research programs](#)

[Research labs](#)

[Core facilities & resources](#)

Education & Training

[Overview](#)

[Postdoctoral training](#)

[Gerstner Sloan Kettering Graduate School](#)

[Joint graduate programs](#)

[Programs for college & high school students](#)

News & Events

[Overview](#)

[Seminars & events](#)

Open Positions

[Overview](#)

[Faculty positions](#)

[Postdoctoral positions](#)

[Communication preferences](#)

[Cookie preferences](#)

[Legal disclaimer](#)

[Accessibility Statement](#)

[Privacy policy](#)

[Public notices](#)

© 2024 Memorial Sloan Kettering Cancer Center